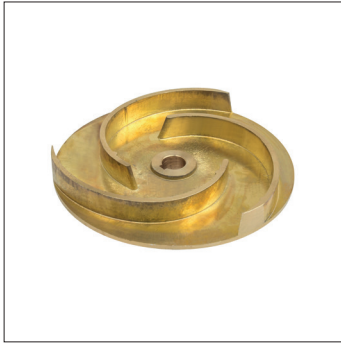


GA(M)100

OPEN IMPELLER

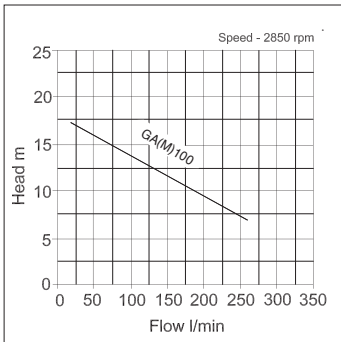


GA(M)100 is a non self-priming, single-stage, centrifugal pump. With an open impeller, it can pump non-aggressive liquids, which are slightly dirty and is designed for irrigation and general circulation, in industrial applications. Optional pump control and energy management systems are available (see pages 100 to 101).

Operating Conditions: Continuous duty | Max. ambient temp: 40°C | Max. suction lift (+ foot valve): 8 mtrs

Fluid: Clean water | Slightly dirty water | Temperature: 0 - 90°C

Application: Industry | Agriculture | Horticulture | Transfer | Circulating



GA(M)100	Type	Impeller	Body
	End suction	Open	Iron

Pump	Pump body	Impeller	Mechanical seal
	Cast iron	Brass	Carbon ceramic/NBR
Motor support	Shaft		
	Cast iron	S/S 304	

Motor	Poles	Enclosure	Insulation
	2 pole	IP44	Class F



GAM100

item code	model	inlet (BSPF)	outlet (BSPF)	kW	volt	flow (l/min)	head (mtrs)	w x l x h (mm)	dry weight (kgs)
19-15-1071	GAM100	1½"	1½"	0.75	230	260	17	182x311x232	15
19-15-1224	GA100	1½"	1½"	0.75	400	260	17	182x311x232	15