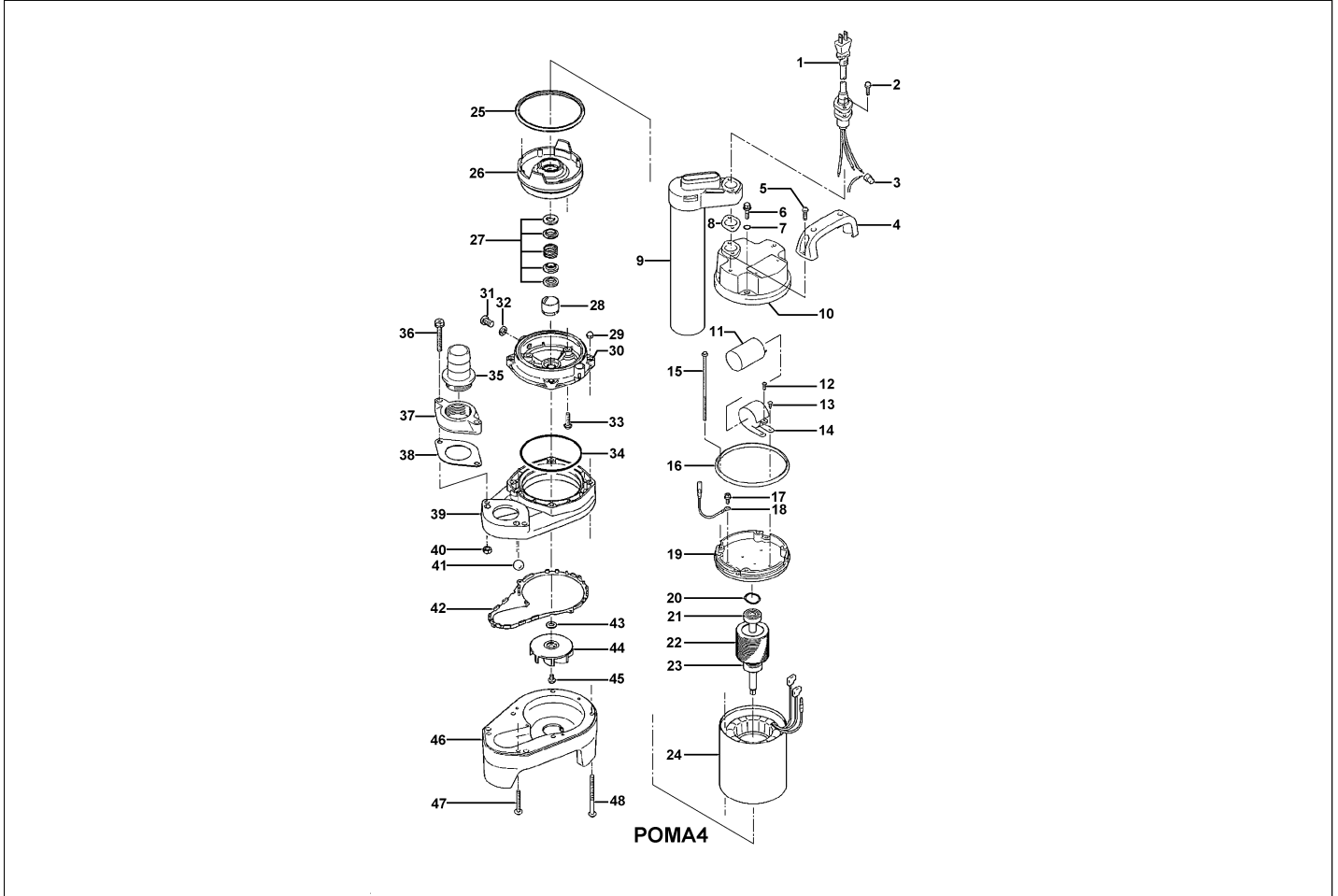


POMA4

Kontroll-Nr. --

2024-04-12 V.01.02.2023

Pos.no	Item no.	Description	Qty.	UP / EUR
--------	----------	-------------	------	----------



1.1.1		Packing O-Ring Set	1	Price on req.
1	001-350-14	Cable Set (10m) 220/230/240V-50HZ(EUR) H07RN3Cx1mm2(CEE-W/PLUG) F-11	1	
1	001-003-91	Cable Set (10m) 110V-50HZ(EUR) H07RN3Cx1mm2 TF-11	1	Price on req.
2	143-000-20	Tapping Screw (w/Plain Washer) M5x38 SUS304 (EN X5CrNi18-10) Stainless Steel	2	
3	009-120-17	Terminal 1-SD CU	1	
4	068-000-19	Handle Resin	1	
5	143-146-18	Tapping Screw (w/Plain Washer) M5x20 SUS304 (EN X5CrNi18-10) Stainless Steel	2	
6	140-000-34	Hex.Bolt (w/Spring/Plain Washer) M5x25(14L) SUS304 (EN X5CrNi18-10) Stainless Steel	4	
7	122-003-17	O-Ring P-5 NBR	4	
8	121-001-75	Packing POMA4 (P.C.28) Silicon	1	Price on req.
9	106-000-48	Float Set TF-GMK Resin	1	Price on req.
10	051-000-14	Motor Head Cover Resin	1	
11	076-000-24	Capacitor 110V/230V-50HZ(EUR) 28MFD-220VAC	1	
12	143-000-22	Tapping Screw M3x10 SWCH	1	
13	143-086-22	Pan Screw (w/Spring Washer) M4x8 SWRM	2	
14	127-000-23	Capacitor Fixing Plate SPCC	1	
15	143-000-21	Pan Screw M4x115(30L) SS	4	
16	121-001-06	Packing d110.5xd115.5x4.5t(PLS) NBR	1	
17	140-452-11	Hex.Bolt (w/Spring/Plain Washer) M4x8 BSBM	1	
18	009-000-46	Earth Terminal 1.25mm2x175L	1	
19	050-000-34	Motor Bracket ADC	1	
20	142-388-11	Wave Washer #6201(D=30.6) S65CM	2	
21	052-100-15	Bearing 6201ZZC3	1	
22	055-002-17	Rotor	1	Price on req.
23	052-100-15	Bearing 6201ZZC3	1	
24	056-002-21	Stator 220/230/240V-50HZ w/M. Frame	1	Price on req.
24	056-002-19	Stator 110V-50HZ(EUR) w/M. Frame	1	Price on req.
25	121-001-11	Packing 40PU2.15-52/62 NBR	1	
26	060-001-18	Bearing Housing ADC	1	
27	025-000-77	Mechanical Seal D-12B SIC	1	
28	030-000-08	Oil Lifter D-12B Resin	1	
29	141-029-18	Hex.Cap Nut M6 SUS304 (EN X5CrNi18-10) Stainless Steel	4	
30	029-000-42	Oil Casing 40PU2.15-52/62 Resin	1	
31	035-127-15	Oil Plug M10x15 SUS304 (EN X5CrNi18-10) Stainless Steel	1	
32	121-246-11	Packing (Oil Plug) d10.3xd16x2t PE	1	
33	143-000-26	Truss Screw (w/O-Ring) M6x20(P-5,NBR) SUS304 (EN X5CrNi18-10) Stainless Steel	4	
34	122-131-15	O-Ring G-100 NBR	1	
35	032-165-29	Hose Coupling 50mm Resin	1	
36	140-436-19	Hex.Bolt (w/Plain Washer) M8x55SUS304 (EN X5CrNi18-10) Stainless Steel	2	
37	048-000-07	Screwed Flange 50mm(P.C.90)For Stainless Steel Pump (Resin)	1	

POMA4

Kontroll-Nr. --

2024-04-12 V.01.02.2023

Pos.no	Item no.	Description	Qty.	UP / EUR
38	121-469-12	Packing d90xd58x2t NR	1	
39	020-001-34	Pump Casing (Upper) 2-PU Resin	1	
40	141-121-11	Hex.Nut M8(B=12) SUS304 (EN X5CrNi18-10) Stainless Steel	2	
41	203-065-11	Valve d17 Glass	1	
42	121-530-15	Packing 2-PU NBR	1	
43	040-139-16	Impeller Washer d9.2xd17x2t SUS304 (EN X5CrNi18-10) Stainless Steel	1	
44	021-G42-18	Impeller (50HZ) 40PU2.15S-53 Resin	1	
44	021-G43-19	Impeller (60HZ) 40PU2.15S-63 Resin	1	
45	143-173-14	Truss Screw (w/Plain Washer) M5x10 SUS304 (EN X5CrNi18-10) Stainless Steel	1	
46	020-002-24	Pump Casing (Lower)2-PU Resin	1	
47	143-147-19	Pan Screw (w/Plain Washer) M6x40 SUS304 (EN X5CrNi18-10) Stainless Steel	2	
48	143-141-13	Pan Screw (w/Plain Washer) M6x80 SUS304 (EN X5CrNi18-10) Stainless Steel	4	
	173-	Packing & O-Ring Set	1	Price on req.
	##oilWhite	ml White Oil	150	Price on req.