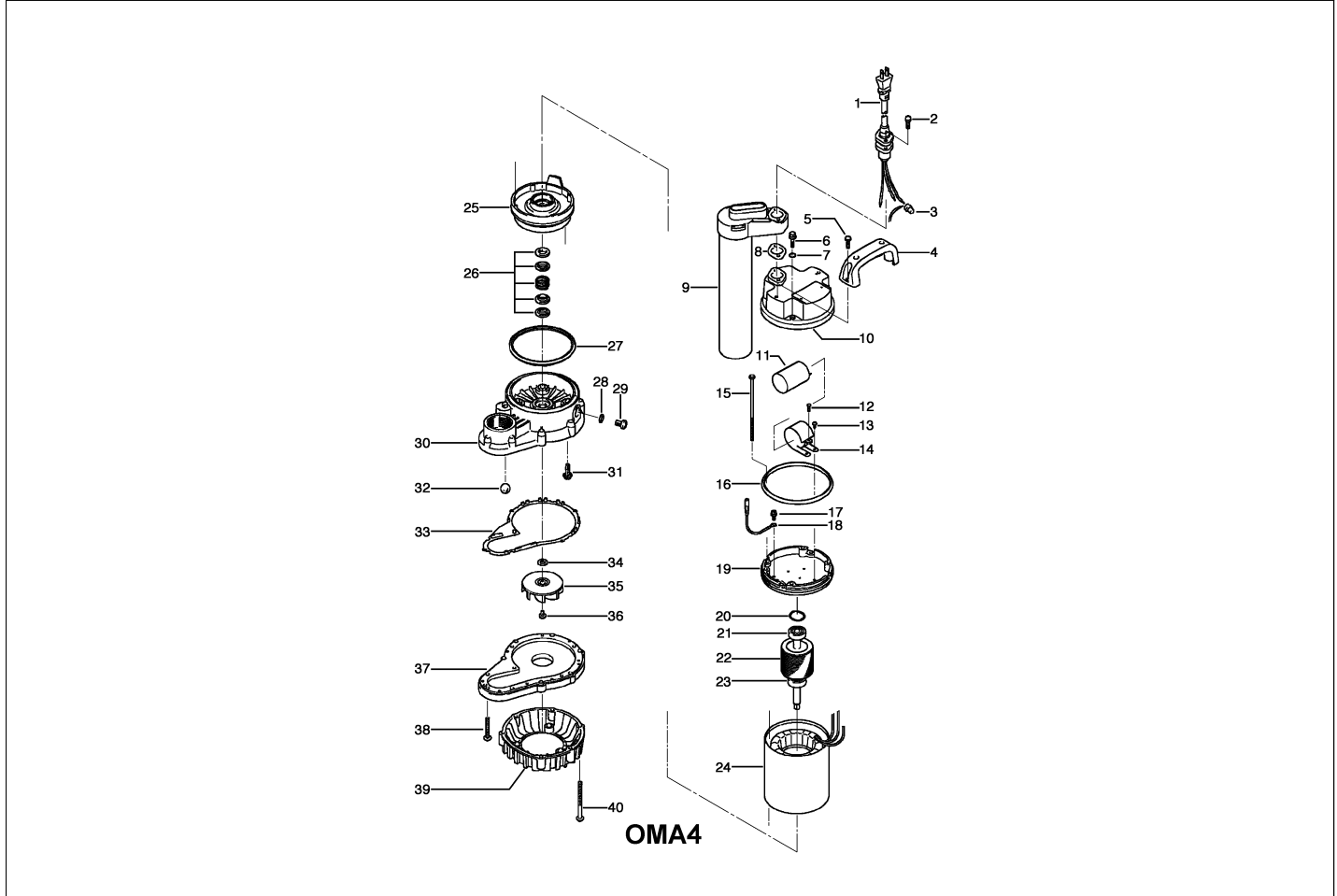


OMA4

Kontroll-Nr. --

2024-04-12 V.01.02.2023

Pos.no	Item no.	Description	Qty.	UP / EUR
--------	----------	-------------	------	----------



1.1.1	173-000-99	Packing & O-Ring Set	1	
1	001-008-99	Cabletyre Cable Set (10m)110V-50H H07RN8F3Gx1mm2 PON-100	1	
1	001-008-98	Cabletyre Cable Set (10m)220/230/240V-50H H07RN8F3Gx1mm2 PON-100	1	
2	143-000-20	Tapping Screw (w/Plain Washer) M5x38 SUS304 (EN X5CrNi18-10) Stainless Steel	2	
3	009-120-17	Terminal 1-SD CU	3	
4	068-000-19	Handle Resin	1	
5	143-146-18	Tapping Screw (w/Plain Washer) M5x20 SUS304 (EN X5CrNi18-10) Stainless Steel	2	
6	140-000-34	Hex.Bolt (w/Spring/Plain Washer) M5x25(14L) SUS304 (EN X5CrNi18-10) Stainless Steel	4	
7	122-003-17	O-Ring P-5 NBR	4	
8	121-239-11	Packing FAMILY-10A(P.C.28) Silicon	1	
9	106-000-34	Foat Set 220/230/240V-50Hz TF-PMK Resin	1	Price on req.
10	051-000-14	Motor Head Cover Resin	1	
11	076-000-24	Capacitor 110V/230V-50HZ(EUR) 28MFD-220VAC	2	
12	143-000-22	Tapping Screw M3x10 SWCH	1	
13	143-086-22	Pan Screw (w/Spring Washer) M4x8 SWRM	2	
14	127-000-23	Capacitor Fixing Plate SPCC	1	
15	143-000-21	Pan Screw M4x115(30L) SS	4	
16	121-001-06	Packing d110.5xd115.5x4.5t(PLS) NBR	1	
17	140-452-11	Hex.Bolt (w/Spring/Plain Washer) M4x8 BSBM	1	
18	009-000-46	Earth Terminal 1.25mm2x175L	1	
19	050-000-34	Motor Bracket ADC	1	
20	142-388-11	Wave Washer #6201(D=30.6) S65CM	2	
21	052-100-15	Bearing 6201ZZC3	1	
22	055-002-17	Rotor	1	Price on req.
23	052-100-15	Bearing 6201ZZC3	1	
24	056-002-19	Stator 110V-50HZ(EUR) w/M. Frame	1	Price on req.
24	056-002-21	Stator 220/230/240V-50HZ w/M. Frame	1	Price on req.
25	060-001-18	Bearing Housing ADC	1	
26	025-000-77	Mechanical Seal D-12B SIC	1	
27	121-001-11	Packing 40PU2.15-52/62 NBR	1	
28	121-246-11	Packing (Oil Plug) d10.3xd16x2t PE	1	
29	035-127-15	Oil Plug M10x15 SUS304 (EN X5CrNi18-10) Stainless Steel	1	
30	020-001-22	Pump Casing (Upper) OM(A) 2 Resin	1	
31	143-000-26	Truss Screw (w/O-Ring) M6x20(P-5,NBR) SUS304 (EN X5CrNi18-10) Stainless Steel	4	
32	203-065-11	Valve d17 Glass	1	
33	121-000-48	Packing OM(A) 2 NBR	1	
34	142-390-16	Conical Spring Washer d9.2xd18x0.7t SUS304 (EN X5CrNi18-10) Stainless Steel	1	
35	021-004-71	Impeller (50HZ) OM(A) 2 Resin	1	
36	143-173-14	Truss Screw (w/Plain Washer) M5x10 SUS304 (EN X5CrNi18-10) Stainless Steel	1	
37	020-001-23	Pump Casing (Lower) OM(A) 2 Resin	1	

OMA4

Kontroll-Nr. --

2024-04-12 V.01.02.2023

Pos.no	Item no.	Description	Qty.	UP / EUR
38	143-000-15	Tapping Screw (w/Plain Washer) M5x30 SUS304 (EN X5CrNi18-10) Stainless Steel	3	
39	023-000-42	Strainer Stand OM2 Resin	1	
40	143-000-18	Tapping Screw (w/Plain Washer) M5x50 SUS304 (EN X5CrNi18-10) Stainless Steelteil	6	
	173-000-99	Packing & O-Ring Set	1	
	#oilWhite	ml White Oil	165	Price on req.