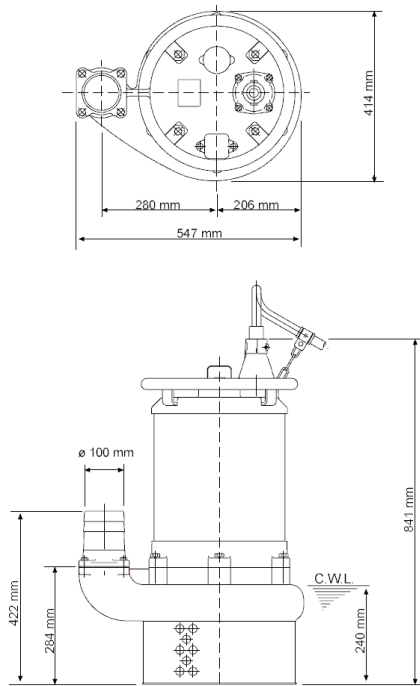
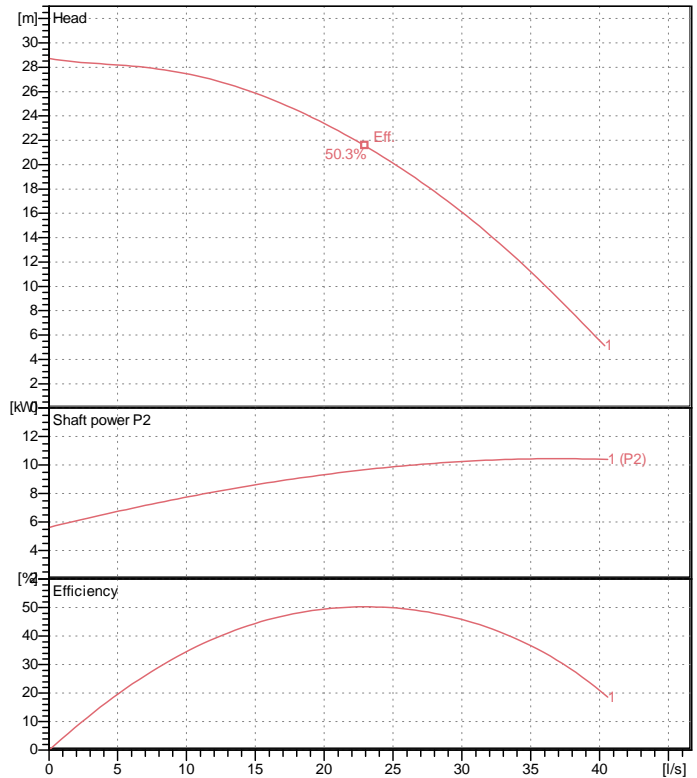


# Data sheet NKZ3-100H



NKZ3-100H

CWL: Continuous running water level



## Specification

Electric submersible pump  
 Degree of protection IP 68  
 Depth of submersion max. 15 m  
 Type of impeller Open  
 Max. solid handling 20 mm  
 Suitable for:  
 sludge, slurry, liquids containing sand, bentonite

## Electric motor

Dry-type submersible induction motor  
 Insulation class B 4Poles 1450 1/min  
 Starting mode Directly  
 Rated voltage 400 V 50 Hz 3~  
 Power uptake 13.21 kW  
 Rated power 11.00 kW  
 Rated current 22 A  
 Start current 155.1 A

## Cable

20m NSSHÖU 4Cx4mm<sup>2</sup>

## Motor Protection

Circle thermal protector  
 (snap-action bi-metal device)

## Shaft seal

Double inside mechanical seal in oil bath  
 additional lubrication by oil lifting device

Primary seal

Silicon carbide on silicon carbide

Secondary seal

Silicon carbide on silicon carbide

## Bearings

Shielded ball bearings, maintenance-free

## Materials

|               |                         |
|---------------|-------------------------|
| Impeller      | Chromium iron casting   |
| Agitator      | FCD700 (EN-GJS-700-2)   |
| Pump casing   | FC200 (EN-GJL-200)      |
| Suction cover | FCD700 (EN-GJS-700-2)   |
| Motor Frame   | FC150 (EN-GJL-150)      |
| Shaft         | DIN 1.4028 (EN-X30Cr13) |

## Discharge size

4" (100mm) BS-coupling (threaded flange)

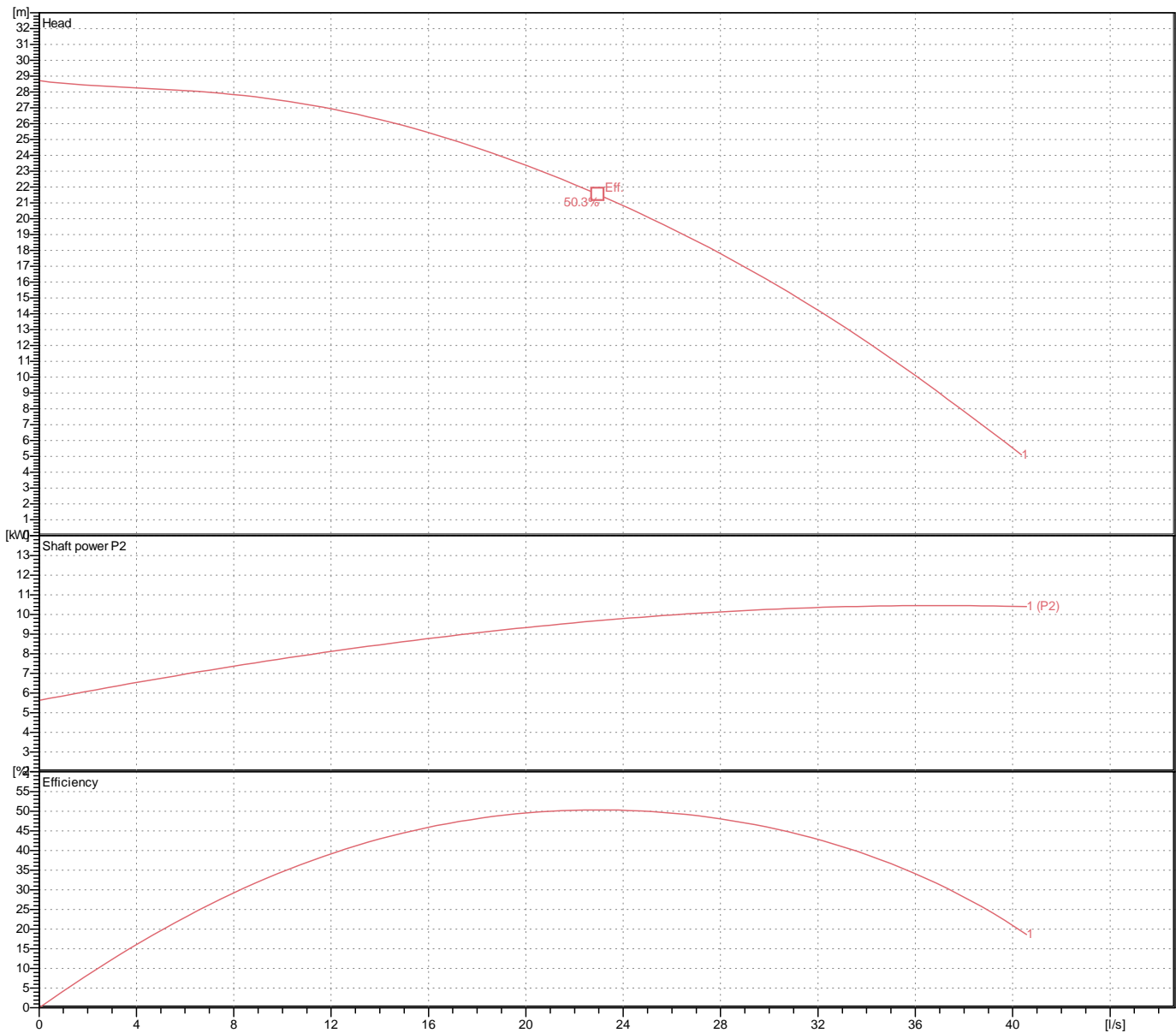
## Weight

196 kg (dry weight of the pump only without cable)

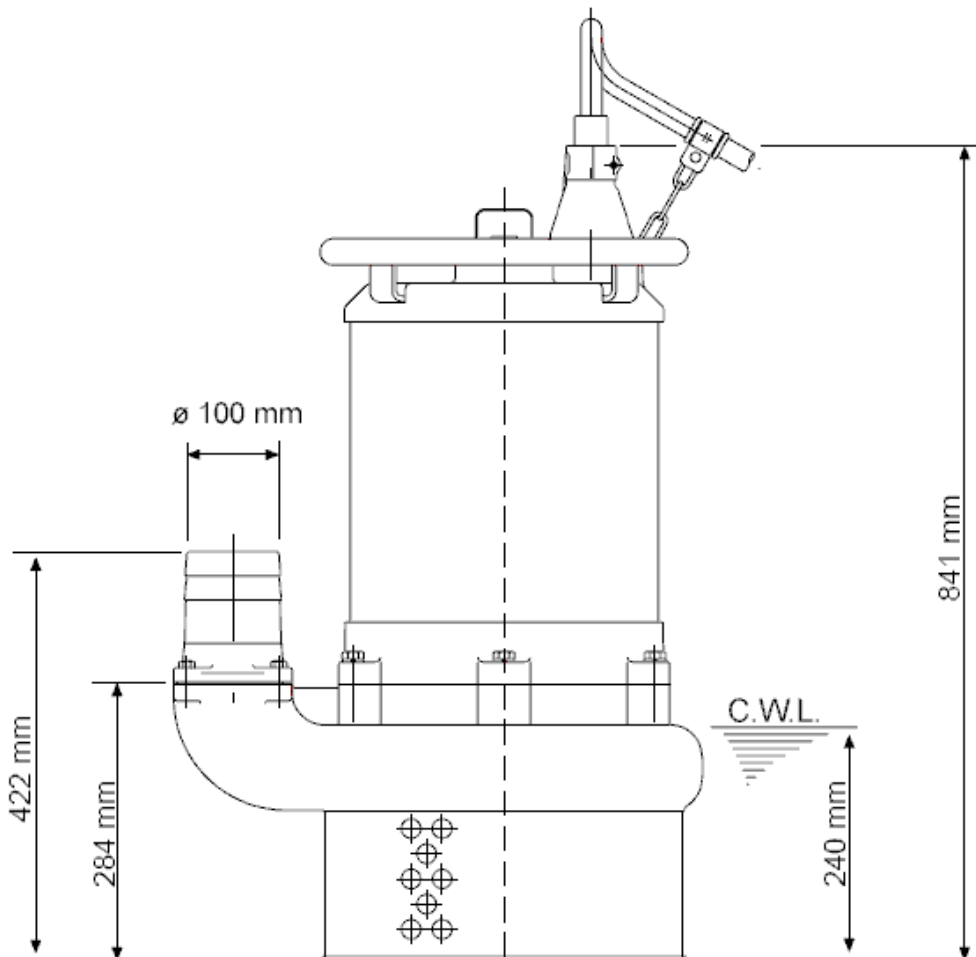
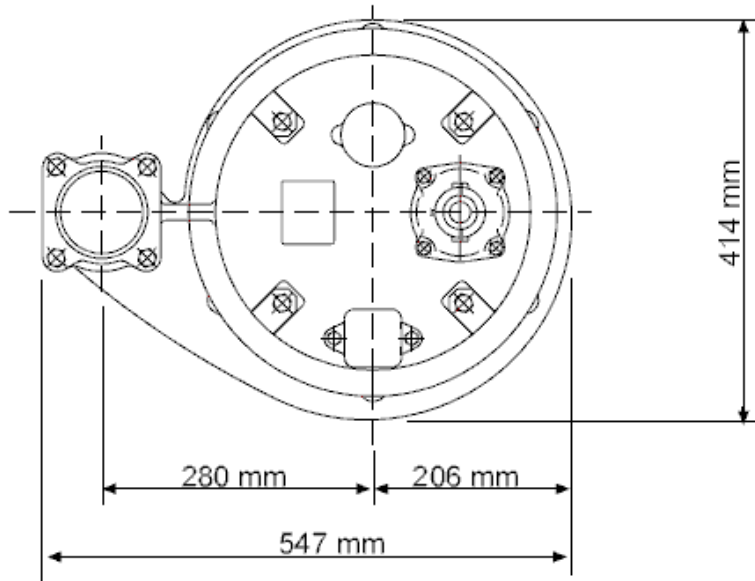
# Performance curve

## NKZ3-100H

|                  |            |
|------------------|------------|
| Discharge port   | 4"         |
| Head             | 28.7 m     |
| Flow             | 40.4 l/s   |
| Rated power      | 11.00 kW   |
| Power input      | 13.21 kW   |
| Phases           | 3~         |
| Voltages         | 400 V      |
| Frequency        | 50 Hz      |
| Rated current    | 22 A       |
| Starting current | 155.10 A   |
| Number of poles  | 4          |
| Speed            | 1450 1/min |
| Starting mode    | Directly   |
| Insulation class | B          |



# Dimensions NKZ3-100H



**NKZ3-100H**

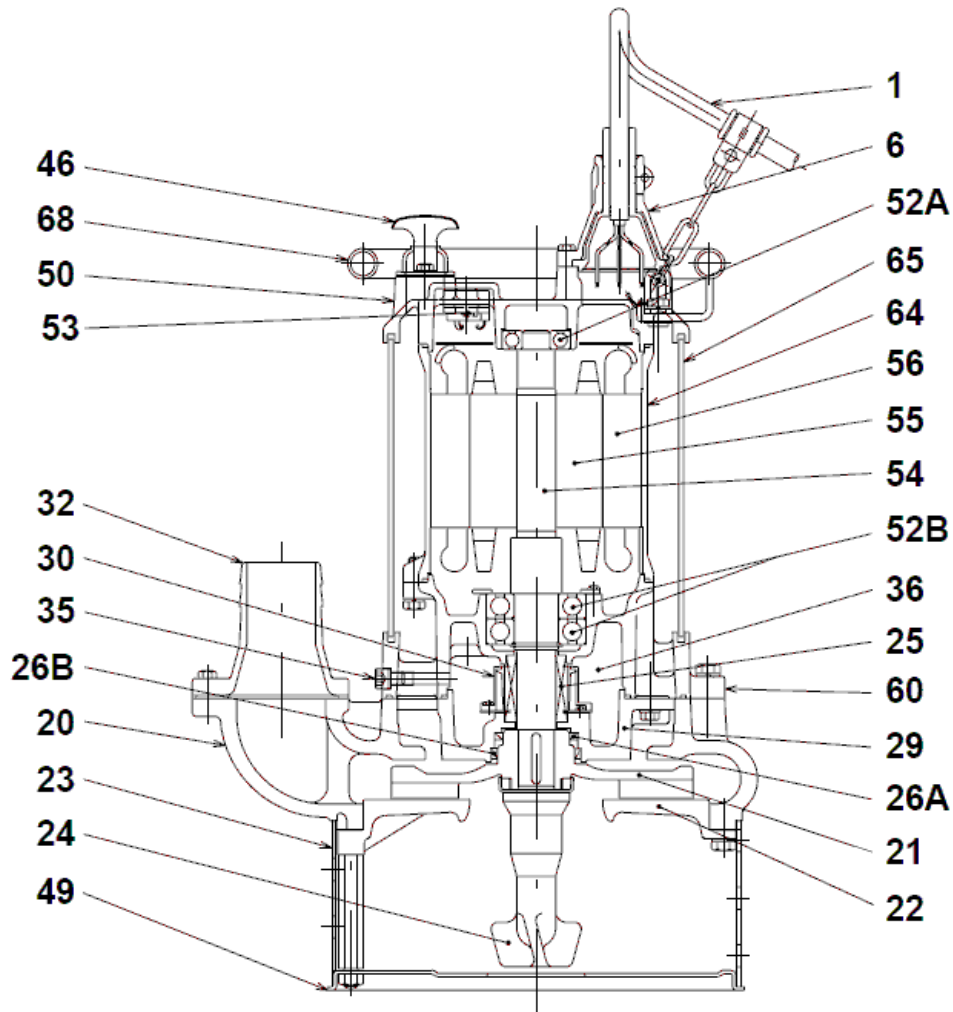
**CWL: Continuous running water level**  
**LWL: Lowest running water level**

 **TSURUMI PUMP**

Tsurumi Europe GmbH  
15.10.2018 V.18 / 1.10.2015

Helstorfer Str. 14 \* 40472 Düsseldorf \* Germany  
Tel.: +49-211-4179373 sales@tsurumi.eu  
Fax: +49-211-417937-480 www.tsurumi.eu

# Sectional drawing NKZ3-100H



NKZ3-100H

| No. | Description        | Remark                       | No. | Description                  | Remark                   |
|-----|--------------------|------------------------------|-----|------------------------------|--------------------------|
| 1   | Cable              | 20m NSSHÖU                   | 52B | Lower bearing (2x)           | 6310ZZD2C3               |
| 6   | Stuffing box       | FC200 (EN-GJL-200)           | 53  | Motor Protector 380/400/415V | 50Hz KA314-HRXL00 (H.C)  |
| 20  | Pump casing        | FC200 (EN-GJL-200)           | 54  | Shaft                        | DIN 1.4028 (EN-X30Cr13)  |
| 21  | Impeller           | Chromium iron casting        | 55  | Rotor                        | .                        |
| 22  | Suction cover      | FCD700 (EN-GJS-700-2)        | 56  | Stator                       | .                        |
| 23  | Strainer           | Steel plate                  | 60  | Bearing Housing              | FC150 (EN-GJL-150)       |
| 24  | Agitator           | FCD700 (EN-GJS-700-2)        | 64  | Motor Frame                  | FC150 (EN-GJL-150)       |
| 25  | Mechanical seal    | H-35                         | 65  | Outer Cover                  | Construction steel SS400 |
| 26A | Upper Oil seal     | VC-60756                     | 68  | Handle                       | electroplated steel pipe |
| 26B | Lower Oil seal     | DD-718195                    |     |                              |                          |
| 29  | Oil casing         | FC200 (EN-GJL-200)           |     |                              |                          |
| 32  | Discharge coupling | FC200 (EN-GJL-200)           |     |                              |                          |
| 35  | Oil screw          | DIN 1.4301 (EN-X5CrNi 18-10) |     |                              |                          |
| 36  | Lubricant          | Turbine oil (ISO VG32)       |     |                              |                          |
| 50  | Motor cover        | FC150 (EN-GJL-150)           |     |                              |                          |
| 52A | Upper bearing      | 6307ZZC3                     |     |                              |                          |