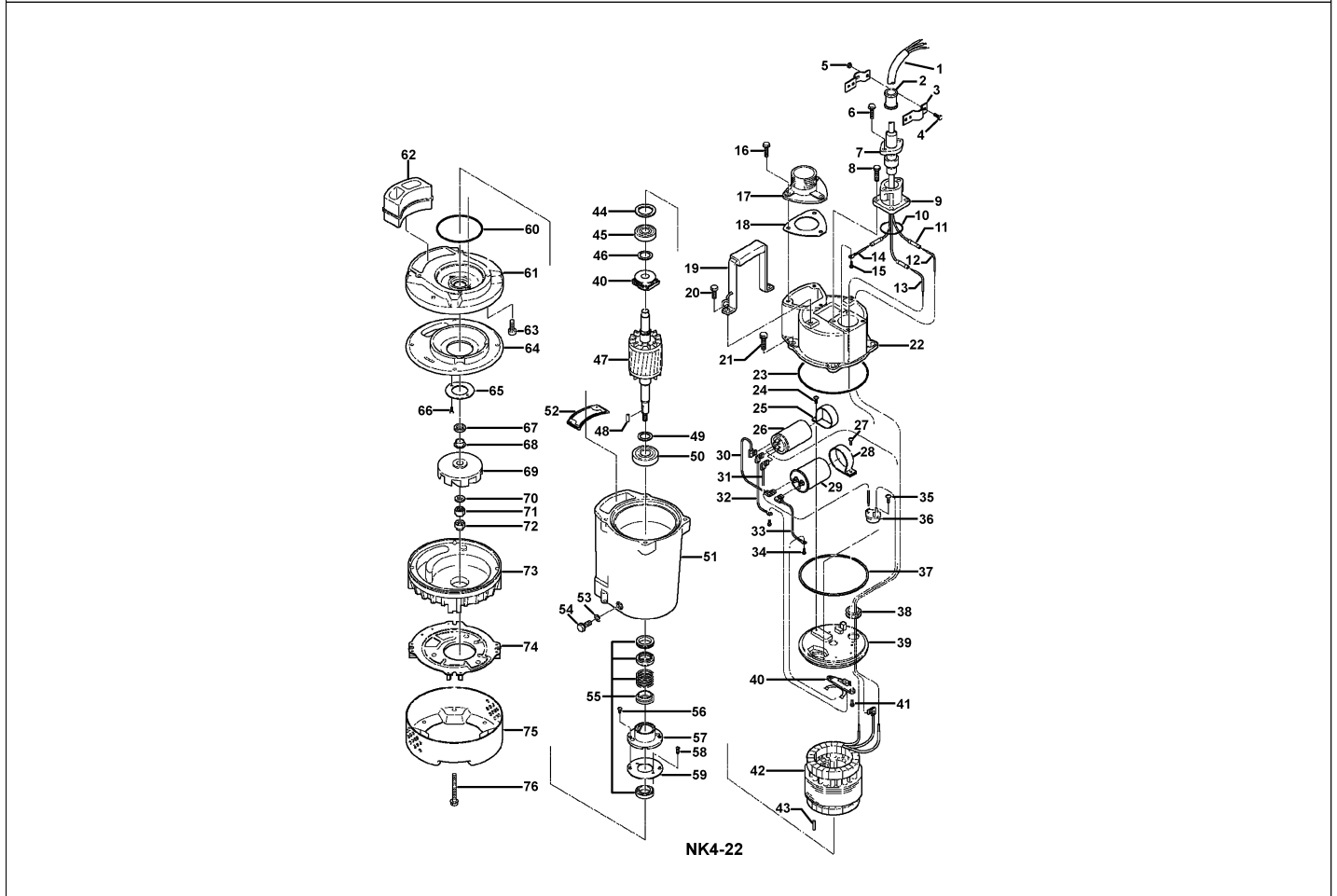


NK4-22

Kontroll-Nr. --

2022-02-24 V.01.02.2022

Pos.no	Item no.	Description	Qty.	UP / EUR
--------	----------	-------------	------	----------



1.1.1	173-003-61	Packing & O-Ring Set	1	Inclusive
1	001-TEG-22	Cabletyre Cable Set (20m) H07RN-F3Cx2,5mm ² without gland / stuffing box	1	235,43
2	010-124-15	Cable Clip Rubber No.3 NBR	1	2,78
3	010-135-19	Cable Clip 2 LP-3700A/S SPC	2	3,28
4	140-030-19	Hex.Bolt 2 M6x12 SUS304 (EN X5Cr18-10)	2	0,87
5	141-004-17	Hex.Nut M6 SUS304	2	0,51
6	140-477-12	Hex.Bolt (w/Plain Washer) M8x30 SUS304 (EN X5CrNi18-10)	2	3,06
7	003-000-22	Gland LB-1500 ADC	1	22,24
8	140-447-13	Hex.Bolt (w/Plain Washer) M8x25(B=12) EN X5CrNi18-10	4	2,21
9	006-000-43	Stuffing Box NK2-22(HAR)	1	255,68
10	122-121-12	O-Ring G-50 NBR	1	2,32
11	009-274-17	Compression type Terminal TMNB-2.2(Insulated) CU	3	1,19
12	009-001-91	Intermediate Lead Wire 1 AWG14x140L(White)	1	Price on req.
13	009-001-81	Earth Terminal 380/400/415V-50Hz 1.5mm2x210mm	1	24,79
14	009-001-86	Intermediate Lead Wire 1 AWG14x95L(Earth) H-VSF	1	Price on req.
15	143-000-71	Tapping Pan Screw (w/Spring Washer) 1 M4x6 SWRM	1	Price on req.
16	140-477-12	Hex.Bolt (w/Plain Washer) M8x30 SUS304 (EN X5CrNi18-10)	3	3,06
17	032-000-45	Hose Coupling (for EUR)KTV2-15(BSPT-2) FC	1	128,40
18	121-001-09	Packing KTV2-15/22 NBR	1	10,00
19	068-000-34	Handle KTZ1.5/2.2-61(USA) SPC+ NBR	1	52,52
20	140-074-15	Hex.Bolt M10x20 SUS304	2	3,90
21	140-433-16	Hex.Bolt (w/Spring Washer /Plain Washer) M10x35 EN X5CrNi18-10	4	12,99
22	051-000-64	Head Cover 1 ADC	1	Price on req.
23	122-000-63	O-Ring 1 GS-165 NBR	1	Price on req.
24	143-000-73	Pan Screw (w/Spring Washer) 1 M4x8 SWRM	1	Price on req.
25	127-000-99	Capacitor Fixing Plate 220/230/240V-50Hz d51(1.0t) SPC	1	57,86
26	076-142-13	Capacitor 200MFD-250VAC	1	269,87
27	143-000-73	Pan Screw (w/Spring Washer) 1 M4x8 SWRM	1	Price on req.
28	127-001-02	Capacitor Fixing Plate 1 d56(t=1) SPCC	1	Price on req.
29	076-000-61	Capacitor 220/230/240V-50Hz(EUR) 1 30MF-400VAC(d56x75L)	1	Price on req.
30	009-001-84	Intermediate Lead Wire 1 AWG14x110L(Black)	1	Price on req.
31	009-001-83	Intermediate Lead Wire 1 AWG14x160L(Black)	1	Price on req.
32	009-001-92	Intermediate Lead Wire 1 AWG14x270L(Red)	1	Price on req.
33	009-001-93	Intermediate Lead Wire 1 AWG14x270L(White)	1	Price on req.
34	143-000-74	Pan Screw 2 M3x6 SWRM	2	Price on req.
35	143-000-72	Truss Screw 2 M4x8 SWRM	2	Price on req.
36	053-002-21	Motor Protector 220/230/240V-50Hz(EUR) 1 KA143-CCTL402 (H.C)	1	235,48
37	121-001-73	Packing 1 d157xd167X2t NBR	1	Price on req.
38	016-000-17	Lead Wire Protection Bush 1 NBR	1	Price on req.
39	050-001-27	Motor Bracket 1 FC	1	Price on req.

NK4-22

Kontroll-Nr. --

2022-02-24 V.01.02.2022

Pos.no	Item no.	Description	Qty.	UP / EUR
40	077-000-02	Centrifugal Switch 1 GS-119(d20)	1	Price on req.
41	143-015-17	Pan Screw M4x10 SWRM	2	0,37
42	056-009-30	Stator 220/230/240V-50Hz(EUR) 1Set	1	Price on req.
43	145-031-15	Spring Pin #4x25l SCM	1	14,17
44	142-194-18	Wave Washer #6203 SK-5	2	5,54
45	052-102-17	Bearing 6203ZZC3	1	19,17
46	061-152-10	Bearing Collar d17.1xd23x1.6t Kaltgewalztes Blech	1	3,06
	055-003-28	Rotor + Bearing + Centrifugal Switch Set 1Set No.40,45,46,47,49,50	1	Price on req.
47	055-003-29	Rotor 1Set	1	Price on req.
48	147-128-16	Impeller Key 5x5x18.5L SUS403 (EN X6Cr13)	1	17,50
49	061-161-12	Bearing Collar d25.1xd36x1.6t SPC	1	4,72
50	052-108-13	Bearing 6305ZZC3	1	37,50
51	064-001-46	Motor Frame 1 ADC	1	Price on req.
52	121-445-12	Packing (Water Way, Upp.) KTV2-15/22 NBR	1	13,08
53	121-246-11	Packing (Oil Plug) d10.3xd16x2t PE	1	1,04
54	035-125-13	Oil Plug M10x20(B=13) SUS304 (EN X5CrNi18-10) Stainless Steel	1	6,97
55	025-000-98	Mechanical Seal 1 H-20T(E) SIC	1	475,90
56	143-070-23	Pan Screw M5x6 SWRM	2	0,37
57	030-144-13	Oil Lifter H-20(A)(T) Resin	1	8,36
58	143-070-10	Pan Screw M5x6 SWRM	2	0,37
59	030-155-17	Seal Stopper H-20(KTV2) SPCC	1	10,56
60	122-134-18	O-Ring G-115 NBR	1	5,29
61	029-000-77	Oil Casing KTV2-15/22 ADC	1	228,73
62	121-001-04	Packing (Water Way, Low.)KTV2-15/22 SBR	1	50,04
63	140-270-13	Hex.Socket Cap Bolt M8x30 SUS304	1	4,99
64	031-000-08	Wear Ring KTV2-15/22 BR+NR	4	100,87
65	058-000-25	Protection Plate d44xd70x3t SUS304 (EN X5CrNi18-10) Stainless Steel	1	25,02
66	143-166-14	Flat Screw M4x8 SUS304 (EN X5CrNi18-10) Stainless Steel	1	0,79
67	122-443-13	V-Ring VR-20 NBR	2	21,13
68	071-297-19	Shaft Sleeve d16xd20x10l SUS304	1	38,62
69	021-F74-18	Impeller (50HZ) 50Hz FCD	1	179,81
70	142-129-25	Plain Washer M12 SPC	1	0,61
71	141-007-10	Hex.Nut M12 SUS304	1	3,61
72	141-032-14	Hex.Cap Nut M12 SUS304	1	8,36
73	020-B19-18	Pump Casing (New) KTV2-15/22 BR+NR	1	112,56
74	127-249-12	Fixing Plate (New) KTV2-15/22 SPCC	1	30,29
75	023-432-19	Strainer Stand KTV2-15/22 SPCC	1	80,31
76	140-479-14	Hex.Bolt (w/Plain Washer)M8x85 EN X5CrNi18-10	4	11,80
	173-003-61	Packing & O-Ring Set	1	Price on req.
	#oilVG32	ml Turbine Oil ISO VG32	270	Price on req.