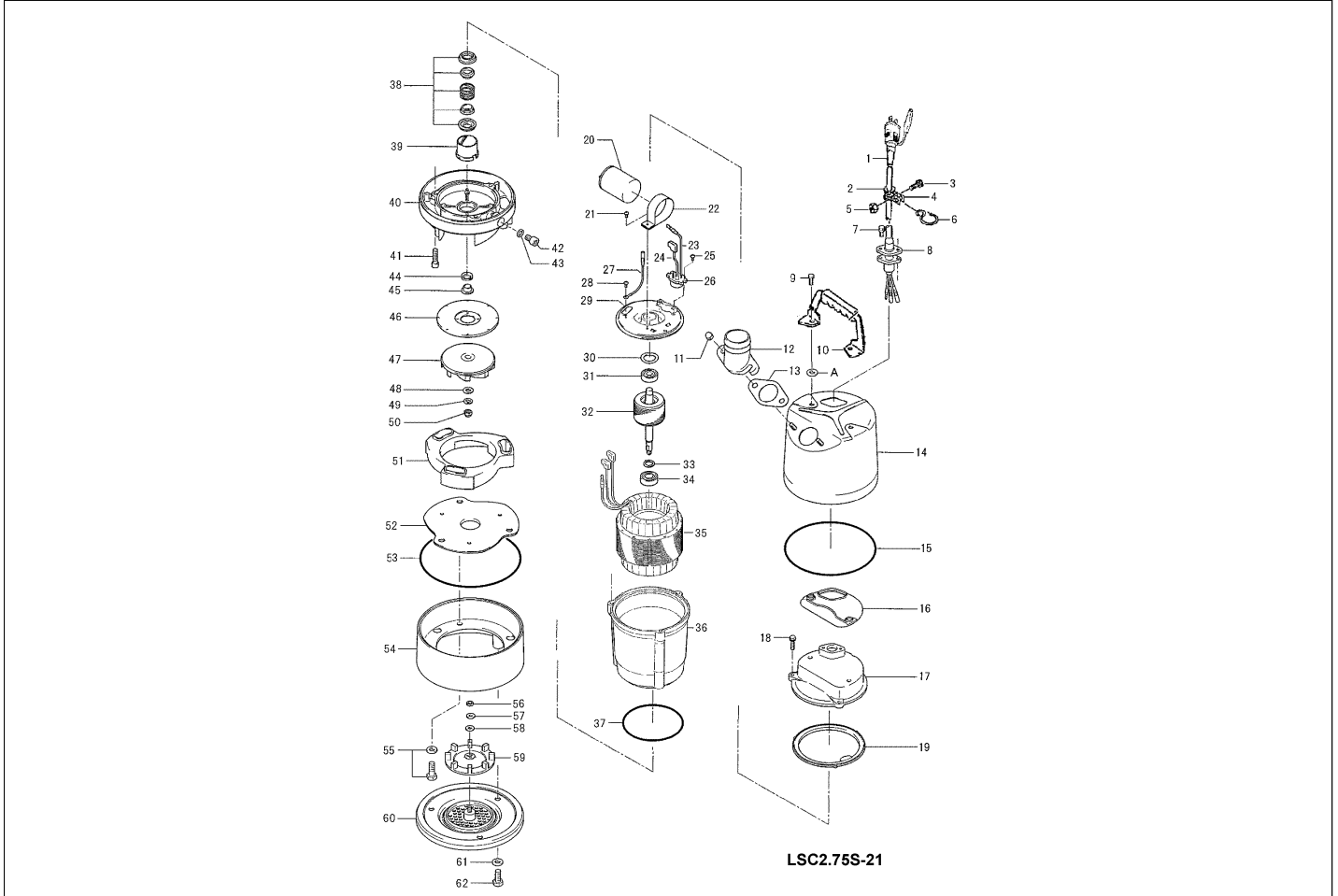


LSC2.75S-51

Kontroll-Nr. --

2024-04-11 V.01.02.2023

Pos.no	Item no.	Description	Qty.	UP / EUR
--------	----------	-------------	------	----------



1.1.1	173-000-40	Packing & O-Ring Set	1	
1	001-010-05	Cabletyre Cable Set (10m) 220/230/240V-50Hz(EUR) H07R-F3Cx1mm2 LBD(HAR)	1	
	061-TEG-05	Cable Repair Kit	1	
2	010-162-15	Cable Clip Rubber 220/230/240V-50Hz(EUR) LB2-400 NBR	1	
3	140-015-21	Hex.Bolt M5x10 SWRM	1	
4	010-105-10	Cable Clip SB SPC	1	
5	141-003-58	Hex.Nut M5 SWRM	1	
6	011-100-18	Shackle S-8 SS	1	
7	032-000-20	Hose Coupling LSC/LSP type, 25A ADC12	2	
8	003-190-10	Gland SUS316 (EN X5Cr-Ni-Mo17-12-2)	1	
9	140-503-18	Hex.Bolt (w/Plain Washer) M8x16 SUS304 (X5CrNi18-10) Stainless Steel	2	
10	068-000-85	Handle PC90-114 H=125 SPC+NBR	1	
A	142-001-42	Plain Washer d48xd96x6t(M45) SPC	2	
11	141-144-10	Flanged Hex. Nut M8 SUS304 (EN X5CrNi18-10) Stainless Steel	2	
12	032-000-23	Hose Coupling (for EUR) BSPT-2,LBA-480 ADC	1	
13	121-587-17	Packing LBA-250/480-51/61 NBR	1	
14	065-000-87	Outer Cover SPC	1	Price on req.
15	122-453-16	O-Ring 172xd2.7 NBR	1	
16	121-002-09	Packing LB3-250/480 Synthetic Rubber	1	
17	051-000-55	Head Cover ADC	1	
18	140-396-16	Hex.Bolt (w/Plain Washer) M6x20 SUS304 (EN X5CrNi18-10) Stainless Steel	3	
19	121-546-14	Packing d120xd142x6.2t NBR	1	
20	076-000-49	Capacitor 220/230/240V-50Hz(EUR) 15MF-450VAC(f45x70L)	1	
21	143-086-22	Pan Screw (w/Spring Washer) M4x8 SWRM	1	
22	127-001-00	Capacitor Fixing Plate 220/230/240V-50Hz d45(1.0t) SPC	1	
23	009-001-03	Intermediate Lead Wire AWG16x160(red)	1	
24	009-001-42	Intermediate Lead Wire AWG16x80(Indigo)	1	
25	143-000-43	Truss Screw M4x8 SWRM	2	
26	053-002-04	Motor Protector 220/230/240V-50Hz(EUR) KA142-LYTL01F (T.C)	1	
27	009-001-02	Earth Terminal UL1015-AWG18,G/Y,L=160	1	
28	143-203-14	Pan Screw M4x5	1	Price on req.
29	050-000-61	Motor Bracket SECD	1	
30	142-000-41	Wave Washer #6201(T=0.4) (S65CM)	1	
31	052-100-15	Bearing 6201ZZC3	1	
32	055-002-98	Rotor	1	
33	061-180-17	Bearing Collar d15.1xd20x1.6t SS	1	
34	052-001-06	Bearing 6302ZZC3	1	
35	056-008-27	Stator 220/230/240V-50Hz(EUR)	1	
36	064-001-27	Motor.Frame ADC	1	
37	122-133-17	O-Ring G-110 NBR	1	

LSC2.75S-51

Kontroll-Nr. --

2024-04-11 V.01.02.2023

Pos.no	Item no.	Description	Qty.	UP / EUR
38	025-000-81	Mechanical Seal W-14VL SSIC (ROHS)	1	
39	030-000-09	Oil Lifter W-14VL Resin	1	
40	029-000-72	Oil Casing LBA-750-51/61 ADC	1	
41	140-252-19	Hex.Socket Cap Bolt M6x20 SUS304 (EN X5CrNi18-10)	3	
42	035-124-12	Oil Plug M10x15 SUS304 (EN X5CrNi18-10)	1	
43	121-246-11	Packing (Oil Plug) d10.3xd16x2t PE	1	
44	122-441-11	V-Ring VR-14 NBR	1	
45	071-292-14	Shaft Sleeve LB3-250/480 SUS304 (EN X5CrNi18-10) Stainless Steel	1	
46	031-000-12	Wear Ring LSC1.4S-51/61 SPC+Urethane Rubber	1	
47	021-007-52	Impeller (50Hz) Urethane Rubber	1	
48	142-127-10	Plain Washer M8 SUS304 (EN X5CrNi18-10) Stainless Steel	1	
49	142-163-18	Spring Washer M8 SUS304	1	
50	141-030-12	Hex.Cap Nut M8 SUS304 (EN X5CrNi18-10) Stainless Steel	1	
51	020-000-43	Pump Casing LBA-750 BR+NR	1	
52	022-001-27	Suction Cover LBA-750 SPC	1	
53	122-246-14	O-Ring (Brq.Housing/O.Casing) 180xd3.1 NBR	1	
54	023-001-89	Stand LSC1.4S-51/61 type ADC	1	
55	140-477-12	Hex.Bolt (w/Plain Washer) M8x30 SUS304 (EN X5CrNi18-10)	3	
56	141-004-17	Hex. Nut M6 SUS304 SUS304 (EN X5CrNi18-10) Stainless	1	
57	142-229-13	Plain Washer d6.5xd16x1t SUS304 (EN X5CrNi18-10) Stainless Steel	1	
58	121-266-17	Packing d6xd16x1t NBR	1	
59	203-015-16	Swing Check Valve LSC-4 SBR	1	
60	049-000-25	Bottom Plate For LSC1.4S-51/61 SUS304 (EN-X5CrNi18-10)	1	
61	142-001-14	Seal Washer WF-8 SUS304 (EN X5CrNi18-10) Stainless Steel+NBR	3	
62	140-054-19	Hex.Bolt M8x20 SUS304 (EN X5Cr18-10)	1	
	173-	Packing & O-Ring Set	1	Price on req.
	##oilVG32	ml Turbine Oil ISO VG32	155	Price on req.