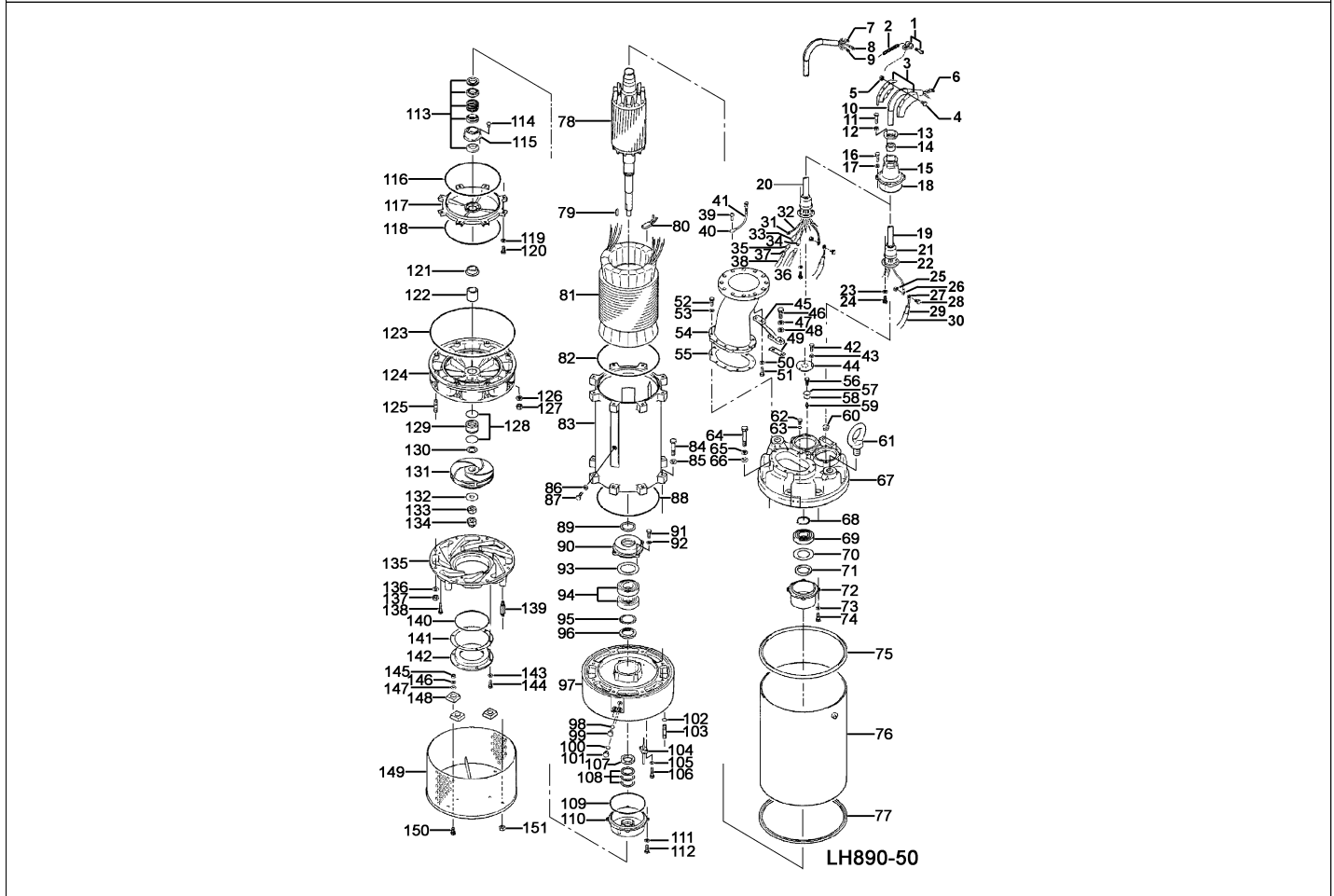


LH890-50

Kontroll-Nr. --

2024-04-11 V.01.02.2023

Pos.no	Item no.	Description	Qty.	UP / EUR
--------	----------	-------------	------	----------



Pos.no	Item no.	Description	Qty.	UP / EUR
1.1.1	173-001-26	Packing & O-Ring Set	1	
1	011-101-19	Shackle 6mm SS	2	
2	095-100-18	Chain d5(9-Link) SS	2	
3	010-103-21	Cable Clip No.4 SPC	4	
4	140-074-15	Hex.Bolt M10x20 SUS304	6	
5	141-006-19	Hex.Nut M10 SUS304 (EN X5CrNi18-10)	6	
7	009-116-10	Terminal R2-4	3	
8	009-113-17	Terminal R-38-10 CU	6	
9	009-168-17	Terminal R-22-S6 CU	2	
10	010-129-10	Cable Clip Rubber 115x100x4t NBR	2	
11	140-056-53	Hex.Bolt M8x30 SUS304 (EN X5Cr18-10)	8	
12	141-005-47	Hex.Nut M8(B=12) SUS304 (EN X5CrNi18-10) Stainless Steel	8	
13	003-106-19	Gland No.5 FC200 (EN-GJL-200)	2	
14	004-000-32	Cable Bush 58X33.5X26.5L NBR	2	
15	006-103-28	Stuffing Box No.5 FC200 (EN-GJL-200)	2	
16	140-078-19	Hex.Bolt M10x30 SUS304	8	
17	142-164-19	Spring Washer M10 SUS304	8	
18	122-264-18	O-Ring 140xd3.5 NBR	2	
19	E01-TEG-39	Cabtyre cable set (20m) NSSHÖU3x35+3x16/3E+3x2.5ST	1	
19	001-007-93	Cabtyre Cable Set (20m) 380/400/415V-50Hz(EUR) NSSHÖU 4Cx35mm2 No.5	1	Price on req.
20	E01-TEG-39	Cabtyre cable set (20m) NSSHÖU3x35+3x16/3E+3x2.5ST	1	
20	001-007-94	Cabtyre Cable Set (20m) 380/400/415V-50Hz(EUR) NSSHÖU Multi-core7Cx35mm2 No.5	1	Price on req.
21	008-105-13	Mould Cover No.3 NBR	2	
22	003-149-14	Gland (Lower) No.5 FC	2	
23	142-162-17	Spring Washer M6 SUS304 (EN X5Cr18-10)	8	
24	140-033-12	Hex.Bolt M6x16 SUS304 (EN X5CrNi18-10) Stainless Steel	8	
25	141-004-59	Hex.Nut M6 SWRM	6	
26	009-108-19	Terminal R-38-6 CU	6	
27	009-108-19	Terminal R-38-6 CU	6	
28	140-029-31	Hex.Bolt M6x10 BSBM	6	
29	002-115-18	Heat Shrink Tube (Sold per meter) EVA(d16.5x1t) (Vm)	1	
30	002-116-19	Heat Shrink Tube (Sold per meter) A4(d20x0.35t) (Vm)	1	
31	009-168-17	Terminal R-22-S6 CU	2	
32	002-000-20	Earth tube	2	
33	009-114-18	Connector PC-4020M	2	
34	009-115-19	Connector PC-4020F	1	
35	009-115-19	Connector PC-4020F	2	
36	009-114-18	Connector PC-4020M	1	
37	002-128-14	Heat Shrink Tube (Sold per meter) EVA(d10x1t) (Vm)	1	
38	002-164-12	Heat Shrink Tube (Sold per meter)A4(d13x0.3t)(JPY /m)	1	

LH890-50

Kontroll-Nr. --

2024-04-11 V.01.02.2023

Pos.no	Item no.	Description	Qty.	UP / EUR
39	143-000-58	Pan Screw (w/Spring Washer/Plain Washer) M6x12 SWRM	2	
40	009-168-17	Terminal R-22-S6 CU	4	
41	009-001-23	Earth Terminal	2	
42	140-033-12	Hex.Bolt M6x16 SUS304 (EN X5CrNi18-10) Stainless Steel	3	
43	142-162-17	Spring Washer M6 SUS304 (EN X5Cr18-10)	3	
44	016-138-10	Protection BushLH-90/110KW(6) SBR	1	
45	127-000-21	Stay LH890/8110 SS	1	Price on req.
46	140-125-12	Hex.Bolt M16x45 SUS304	2	
47	142-166-11	Spring Washer M16 SUS304	2	
48	142-130-16	Plain Washer M16 SUS304 (EN X5Cr18-10)	2	
49	142-000-29	Washer 0.8/1.2/2.3 SS	1	Price on req.
50	142-165-10	Spring Washer M12 SUS304 (EN X5CrNi18-10) Stainless Steel	2	Price on req.
51	140-099-16	Hex.Bolt M12x40 SUS304	2	
52	140-099-16	Hex.Bolt M12x40 SUS304	10	
53	142-165-10	Spring Washer M12 SUS304 (EN X5CrNi18-10) Stainless Steel	10	Price on req.
54	037-000-57	Flanged Discharge Pipe200mm(GH-370L) FCD	1	
55	121-001-78	Packing (Discharge Pipe) LH-90/110(10Hole) NAS	1	
56	140-033-12	Hex.Bolt M6x16 SUS304 (EN X5CrNi18-10) Stainless Steel	2	
57	214-010-15	Blind Cover LH890/8110 SS	1	
58	121-517-16	Packing 38mm2x2t SBR	1	
59	148-003-17	Grease NippleA-PT1/4C3604	1	
60	016-137-19	Protection BushLH-90/110KW(3) SBR	1	
61	072-129-12	Eye BoltM42SF	2	
62	035-102-30	Oil Plug M12x16(B=21) SUS304	1	
63	122-259-10	O-Ring 12xd3 NBR	1	
64	140-135-15	Hex.Bolt M16x100 EN X5CrNi18-10	8	
65	142-166-11	Spring Washer M16 SUS304	8	
66	121-457-17	Seal Packing d16xd27x4t NBR	8	
67	050-429-17	Motor Bracket FC	1	
68	146-034-11	Retaining RingC60 SK5	1	
69	052-148-15	BearingNU-312A	1	
70	061-176-10	Bearing Collard79xd129x1.2t SS	1	
71	026-273-19	Oil SealSC-8010513 NBR	1	
72	113-103-10	Greese Pan Gray Iron CastingLH110KW FC	1	
73	142-163-34	Spring Washer M8 SWRH	4	
74	140-055-49	Hex.Bolt M8x25 SWRM	4	
75	122-000-22	O-Ring V-530(524.5xd10) NBR	1	
76	065-360-15	Outer Cover SS	1	
77	122-000-22	O-Ring V-530(524.5xd10) NBR	1	
78	055-728-14	Rotor	1	Price on req.
79	147-005-16	Impeller Key 12x8x40 Stainless Steel	1	
80	053-306-16	Motor Protector 9700K-01-215 (H)	3	
81	056-	Stator	1	Price on req.
82	122-256-17	O-Ring 390xd5.7 NBR	1	
83	064-499-11	Motor Frame FC	1	
84	140-132-12	Hex.Bolt M16x80 SUS304 (EN X5CrNi18-10) Stainless Steel	8	
85	142-166-11	Spring Washer M16 SUS304	8	
86	142-427-13	Seal Washer WD-12 SPC+NBR	2	
87	144-540-19	Stator Set BoltM12x40 SS	2	
88	122-256-17	O-Ring 390xd5.7 NBR	1	
89	121-520-12	Packing 10x6.4x270 Felt	1	
90	062-222-15	Bearing Collar FC	1	
91	140-076-33	Hex.Bolt M10x30 SWRM	4	
92	142-164-35	Spring Washer M10 SWRH	4	Price on req.
93	061-177-11	Bearing Collard95xd139x3.2t SS	1	
94	052-185-14	Bearing7313ADB	1	
95	141-078-25	Bearing Nut AN13 SUS304 (EN X5CrNi18-10)	1	
96	142-246-29	Bearing Washer AW13 SUS304 (EN X5CrNi18-10)	1	
97	060-421-10	Bearing Housing FC	1	
98	122-259-10	O-Ring 12xd3 NBR	1	
99	035-102-30	Oil Plug M12x16(B=21) SUS304	1	
100	122-259-10	O-Ring 12xd3 NBR	2	
101	035-102-30	Oil Plug M12x16(B=21) SUS304	2	
102	122-016-13	O-Ring P-16(15.8xd2.4) NBR	8	
103	144-439-14	Stud Bolt M16x60(28/20) SUS304 (EN X5CrNi18-10)	8	
104	090-122-11	Leakage Sensor(Electrode) d9x43L SUS	1	
105	142-161-32	Spring Washer M5 SWRH	2	Price on req.
106	140-021-33	Hex.Bolt M5x20 SWRM	2	Price on req.
107	026-274-10	Oil Seal SC-507212 NBR	1	
108	071-322-14	Spacerd55xd71x3.2t SS	3	
109	122-153-13	O-Ring G-220 NBR	1	
110	113-104-11	Greese Pan Gray Iron CastingLH110KW FC	1	
111	142-164-35	Spring Washer M10 SWRH	4	Price on req.
112	140-076-33	Hex.Bolt M10x30 SWRM	4	
113	025-001-17	Mechanical Seal H-50T SIC	1	
114	143-028-13	Pan Screw M5x10 SWRM	3	
115	030-133-19	Oil Lifter H-50(T) SPCC	1	
116	122-270-17	O-Ring 350xd5.7 NBR	1	
117	029-174-21	Oil Casing GH-1100 FC	1	
118	122-270-17	O-Ring 350xd5.7 NBR	1	
119	142-165-10	Spring Washer M12 SUS304 (EN X5CrNi18-10) Stainless Steel	8	Price on req.
120	140-097-14	Hex.Bolt M12x30 SUS304	8	
121	071-142-18	Shaft Sleeve (Upper) GH-550/750 SUS403 (EN X6Cr13)	1	

LH890-50

Kontroll-Nr. --

2024-04-11 V.01.02.2023

Pos.no	Item no.	Description	Qty.	UP / EUR
122	071-153-12	Shaft Sleeve (Lower) d45xd49x57.5L SUS403 (EN X6Cr13)	1	
123	122-271-18	O-Ring 540xd5.7 NBR	1	
124	020-928-18	Pump Casing (Upper)(50Hz) LH890/8110-50,6110-60 FC	1	
125	144-435-36	Stud Bolt M16x40(28/32) SUS304 (EN X5CrNi18-10)	8	
126	142-166-11	Spring Washer M16 SUS304	8	
127	141-008-11	Hex.Nut M16 SUS304 (EN X5CrNi18-10)	8	
128	122-226-18	O-Ring S-75(74.5xd2.0) NBR	2	
129	026-211-19	Labyrinth Ring d55.5xd78x47L SUS403 (EN X6Cr13)	1	
130	040-127-11	Impeller Shim d45.2xd68x0.3t SUS304 (EN X5CrNi18-10)	1	
131	021-G49-15	Impeller (50Hz)LH890-50 HICRFC	1	
132	142-274-13	Impeller Fixing Washer d33xd75x6t SUS304 (EN X5CrNi18-10)	1	
133	141-012-50	Hex.Nut M30(H=18) SUS304 (EN X5CrNi18-10)	1	
134	141-036-18	Hex.Cap Nut M30 SUS304 (EN X5CrNi18-10)	1	
135	020-925-15	Pump Casing (Lower)(50Hz)LH890-50 FCD	1	
136	142-166-11	Spring Washer M16 SUS304	8	
137	141-008-11	Hex.Nut M16 SUS304 (EN X5CrNi18-10)	8	
138	140-103-30	Hex.Bolt M12x60 SUS304 (EN X5CrNi18-10)	4	
139	144-128-17	Stud Bolt M16x110(24/24) SUS403 (EN X6Cr13)	4	
140	122-302-19	O-Ring 215xd3.8 NBR	1	
141	120-118-10	Packing (S.Cover) d211xd274x0.5t PE	1	
142	034-423-11	Suction Mouth GH-890 HiCrFC	1	
143	142-165-10	Spring Washer M12 SUS304 (EN X5CrNi18-10) Stainless Steel	6	Price on req.
144	140-098-15	Hex.Bolt M12x35 SUS304	6	
145	141-007-10	Hex.Nut M12 SUS304	3	
146	142-129-12	Plain Washer M12 SUS304	3	
147	142-165-10	Spring Washer M12 SUS304 (EN X5CrNi18-10) Stainless Steel	3	Price on req.
148	043-102-19	Cathodic Protection Plate AB-1HS(75x70x20t) Al	3	
149	023-448-18	Strainer Stand LH890/8110 SPC	1	
150	140-097-14	Hex.Bolt M12x30 SUS304	3	
151	141-008-11	Hex.Nut M16 SUS304 (EN X5CrNi18-10)	4	
	173-001-26	Packing & O-Ring Set	1	
	##oilVG32	ml Turbine Oil ISO VG32	8000	Price on req.