

LH845-50

Kontroll-Nr. --

2019-02-2C V.01.02.2019

| Pos.no | Item no. | Description | Quant. | UP |
|--------|---------------|---|--------|---------------|
| 1 | 010-000-36 | Dichtungs-Oring-Satz | 1 | Price on req. |
| 2 | 141-005-18 | Cable Clip (N)SSHOU-J SS | 1 | Price on req. |
| 3 | 140-055-10 | Hex.Nut M8 SUS304 (EN X5CrNi18-10) | 4 | Price on req. |
| 4 | 009-113-17 | Hex.Bolt M8x25 SUS304 | 4 | Price on req. |
| 5 | 009-116-10 | Terminal R-38-10 CU | 7 | Price on req. |
| 6 | M01-TEG-40(N) | Terminal R-2-4 CU | 2 | Price on req. |
| 7 | 011-101-19 | Cabletyre Cable Set (20m) (N)SSHÖU 7x35+1x (3x2.5ST) LH37-75kW | 1 | Price on req. |
| 8 | 095-100-18 | Shackle 6mm SS | 1 | Price on req. |
| 9 | 072-108-44 | Chain d5(9-Link) SS | 1 | Price on req. |
| 10 | 140-081-31 | Eye Bolt M30 SS | 2 | Price on req. |
| 11 | 141-006-19 | Hex.Bolt M10x50 SUS304 (EN X5CrNi18-10) Stainless Steel | 4 | Price on req. |
| 12 | 003-000-41 | Hex.Nut M10 SUS304 (EN X5CrNi18-10) | 4 | Price on req. |
| 13 | 004-000-41 | Gland No.8 (N)SSHOU FC | 1 | Price on req. |
| 14 | 005-000-21 | Cable Bush 85X50X60L NBR | 1 | Price on req. |
| 15 | 006-000-51 | Busch Washer 84,5x51x3,2t | 1 | Price on req. |
| 16 | 140-078-19 | Stuffing Box No.8 (N)SSHO FC | 1 | Price on req. |
| 17 | 142-164-19 | Hex.Bolt M10x30 SUS304 | 4 | Price on req. |
| 18 | 122-135-19 | Spring Washer M10 SUS304 | 4 | Price on req. |
| 19 | 141-004-59 | O-Ring G-120(119.4xd3.1) NBR | 1 | Price on req. |
| 20 | 140-029-28 | Hex.Nut M6 SWRM | 7 | Price on req. |
| 21 | 009-108-19 | Hex.Bolt M6x10 SWRM | 7 | Price on req. |
| 22 | 009-107-18 | Terminal R-38-6 CU | 7 | Price on req. |
| 23 | 009-115-19 | Terminal R-14-6 CU | 6 | Price on req. |
| 24 | 002-128-14 | Connector PC-4020F | 2 | Price on req. |
| 25 | 002-164-12 | Heat Shrink Tube (Sold per meter) EVA(d10x1t) (Vm) | 1 | Price on req. |
| 26 | 009-114-18 | Heat Shrink Tube (Sold per meter)A4(d13x0.3t)(JPY /m) | 1 | Price on req. |
| 27 | 002-000-18 | Connector PC-4020M | 2 | Price on req. |
| 28 | 200-000-23 | Heat Shrink Tube (Sold per meter) W3F2(3/4IN) (Vm) | 1 | Price on req. |
| 29 | 143-000-58 | Electrical tape(30M) 540S(0.18T-30Wx30M) | 1 | Price on req. |
| 30 | 009-106-17 | Pan Screw (w/Spring Washer/Plain Washer) M6x12 SWRM | 1 | Price on req. |
| 34 | 141-008-11 | Terminal(EUR.NSU) R-8-6 CU | 2 | Price on req. |
| 35 | 142-166-11 | Hex.Nut M16 SUS304 (EN X5CrNi18-10) | 6 | Price on req. |
| 36 | 144-436-24 | Spring Washer M16 SUS304 | 6 | Price on req. |
| 37 | 037-362-23 | Stud Bolt M16x69(28/24) SUS304 (EN X5CrNi18-10) Stainless Steel | 6 | Price on req. |
| 38 | 121-500-16 | Discharge Pipe LH837/875 SGP+SS | 1 | Price on req. |
| 39 | 127-259-15 | Packing LH637/875 THREE SHEET | 1 | Price on req. |
| 40 | 140-126-13 | Stav (Right) LH837/845 (Right) SS | 1 | Price on req. |
| 41 | 140-124-11 | Hex.Bolt M16x50 SUS304 (EN X5CrNi18-10) Stainless Steel | 2 | Price on req. |
| 42 | 142-166-11 | Hex.Bolt M16x40 SUS304 (EN X5Cr18-10) | 2 | Price on req. |
| 43 | 142-166-11 | Spring Washer M16 SUS304 | 2 | Price on req. |
| 44 | 141-008-11 | Spring Washer M16 SUS304 | 2 | Price on req. |
| 45 | 127-260-19 | Hex.Nut M16 SUS304 (EN X5CrNi18-10) | 2 | Price on req. |
| 46 | 035-113-18 | Stav (Left) LH837/845 (Left) SS | 1 | Price on req. |
| 47 | 121-247-12 | Oil Plug M12x14 SUS304 | 1 | Price on req. |
| 48 | 140-093-10 | Packing d12.3xd18x2t PE | 1 | Price on req. |
| 49 | 142-164-19 | Hex.Bolt M10x120 SUS304 (EN X5CrNi18-10) Stainless Steel | 2 | Price on req. |
| 50 | 142-297-12 | Spring Washer M10 SUS304 | 2 | Price on req. |
| 51 | 140-078-19 | Seal Washer SM-10 Stainless Steel+NBR | 2 | Price on req. |
| 52 | 142-164-19 | Hex.Bolt M10x30 SUS304 | 1 | Price on req. |
| 53 | 140-130-10 | Spring Washer M10 SUS304 | 1 | Price on req. |
| 54 | 142-166-11 | Hex.Bolt M16x70 SUS304 (EN X5Cr18-10) | 6 | Price on req. |
| 55 | 051-231-13 | Spring Washer M16 SUS304 | 6 | Price on req. |
| 56 | 122-503-12 | Motor Head Cover FC | 1 | Price on req. |
| 57 | 122-344-13 | O-Ring 435xd6 NBR | 1 | Price on req. |
| 58 | 016-115-11 | O-Ring 234.3xd5.7 NBR | 1 | Price on req. |
| 59 | 016-112-18 | Lead Wire Protection Bush GH-645/845(for 5 cores) SBR | 1 | Price on req. |
| 60 | 140-128-15 | Lead Wire Protection Bush GH-645/845(for 3 cores) SBR | 1 | Price on req. |
| 61 | 142-166-11 | Hex.Bolt M16x60 SUS304 | 6 | Price on req. |
| 62 | 050-340-13 | Spring Washer M16 SUS304 | 6 | Price on req. |
| 63 | 122-305-12 | Motor Bracket FC | 1 | Price on req. |
| 64 | 142-280-12 | O-Ring 442xd6 NBR | 1 | Price on req. |
| 65 | 052-113-11 | Wave Washer #6310 SK-5 | 1 | Price on req. |
| 66 | 122-133-17 | Bearing 6310ZZC3 | 1 | Price on req. |
| 67 | 065-191-13 | O-Ring G-110 NBR | 1 | Price on req. |
| 68 | 055-721-17 | Outer Cover GH-37/45KW SS | 1 | Price on req. |
| 69 | 147-056-12 | Rotor | 1 | Price on req. |
| 70 | 053-309-19 | Impeller Key 10x8x50l Stainless Steel | 1 | Price on req. |
| 71 | 056-001-99 | Motor Protector 9700K-46-215 (H) | 3 | Price on req. |
| 72 | 122-107-12 | Stator | 1 | Price on req. |
| 73 | 064-391-12 | O-Ring P-315 NBR | 1 | Price on req. |
| 74 | 122-259-10 | Motor Frame FC | 1 | Price on req. |
| 75 | 144-490-13 | O-Ring 12xd3 NBR | 1 | Price on req. |
| 76 | 122-151-11 | Stator Set Bolt M12(B=21) SUS403 | 1 | Price on req. |
| 77 | 122-159-19 | O-Ring G-205 (NBR) | 1 | Price on req. |
| 78 | 140-054-48 | O-Ring (Brg.Housing/O.Casing) G-280(279.3xd5.7) NBR | 1 | Price on req. |
| 79 | 062-178-15 | Hex.Bolt M8x20 SWRM | 4 | Price on req. |
| 80 | 052-145-12 | Bearing Fixing Plate SS | 1 | Price on req. |
| 81 | 142-247-17 | Bearing 6314ZZD2C3 | 1 | Price on req. |
| 82 | 141-079-13 | Bearing Washer AW14 SPCC | 1 | Price on req. |
| 83 | 026-272-18 | Bearing Nut AN14 SS | 1 | Price on req. |
| 84 | 122-305-12 | Oil Seal SC-50689 NBR | 1 | Price on req. |
| 85 | 140-103-14 | O-Ring 442xd6 NBR | 1 | Price on req. |
| | | Hex.Bolt M12x60 SUS304 (EN X5CrNi18-10) Stainless Steel | 6 | Price on req. |

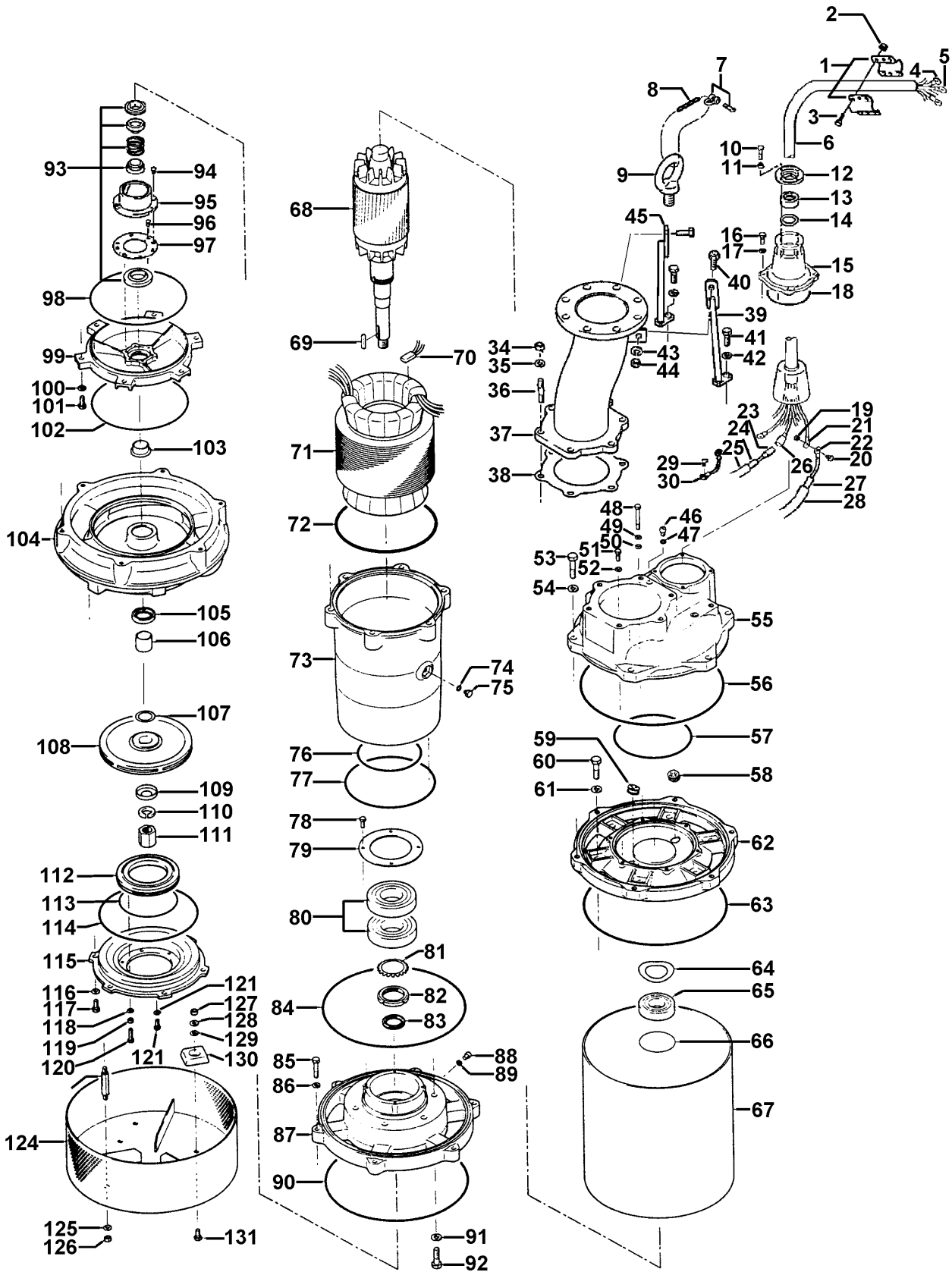
LH845-50

Kontroll-Nr. --

2019-02-20 V.01.02.2019

| Pos.no | Item no. | Description | Quant. | UP |
|--------|------------|---|--------|---------------|
| 86 | 142-165-10 | Spring Washer M12 SUS304 | 6 | Price on req. |
| 87 | 060-417-13 | Bearing Housing FC | 1 | Price on req. |
| 88 | 035-113-18 | Oil Plug M12x14 SUS304 | 2 | Price on req. |
| 89 | 121-247-12 | Packing d12.3xd18x2t PE | 2 | Price on req. |
| 90 | 122-305-12 | O-Ring 442xd6 NBR | 1 | Price on req. |
| 91 | 142-166-11 | Spring Washer M16 SUS304 | 6 | Price on req. |
| 92 | 140-127-14 | Hex.Bolt M16x55 SUS304 (EN X5CrNi18-10) Stainless Steel | 6 | Price on req. |
| 93 | 025-001-24 | Mechanical Seal HT-4550N SIC | 1 | Price on req. |
| 94 | 143-070-23 | Pan Screw M5x6 SWRM | 2 | Price on req. |
| 95 | 030-136-12 | Oil Lifter HT-4550 Resin | 1 | Price on req. |
| 96 | 143-070-10 | Pan Screw M5x6 SWRM | 6 | Price on req. |
| 97 | 030-145-14 | Seal Stopper HT-4550 SPCC | 1 | Price on req. |
| 98 | 122-282-12 | O-Ring 295xd4 NBR | 1 | Price on req. |
| 99 | 029-346-13 | Oil Casing LH-37/45KW FC | 1 | Price on req. |
| 100 | 142-165-10 | Spring Washer M12 SUS304 | 6 | Price on req. |
| 101 | 140-097-14 | Hex.Bolt M12x30 SUS304 | 6 | Price on req. |
| 102 | 122-282-12 | O-Ring 295xd4 NBR | 1 | Price on req. |
| 103 | 071-119-16 | Shaft Sleeve GH-370H/L SUS403 (EN X6Cr13) Stainless Steel | 1 | Price on req. |
| 104 | 020-A83-12 | Pump Casing LH837/845(w/Labyrinth Ring) FC | 1 | Price on req. |
| | 026-148-27 | Labyrinth Ring LH637/645 SUS304 (EN X5CrNi18-10) Stainless Steel | 1 | Price on req. |
| 105 | 026-130-13 | Oil Seal TCN-487012 NBR | 1 | Price on req. |
| 106 | 071-121-11 | Shaft Sleeve GH-370H/L SUS403 (EN X6Cr13) Stainless Steel | 1 | Price on req. |
| 107 | 040-126-10 | Impeller Shim d41.5xd59x0.3t SUS304 (EN X5CrNi18-10) Stainless Steel | 1 | Price on req. |
| 108 | 021-413-21 | Impeller (50HZ) 50Hz HiCrFC | 1 | Price on req. |
| 109 | 047-107-29 | Impeller Thread Protect.Cover No.6(33) SUS304 (EN X5CrNi18-10) Stainless Steel | 1 | Price on req. |
| 110 | 142-171-19 | Spring Washer M30 SUS304 | 1 | Price on req. |
| 111 | 157-022-10 | Impeller Nut M30,P3.5(B=46,Hex.Cap Nut) SUS304 (EN X5CrNi18-10) Stainless Steel | 1 | Price on req. |
| 112 | 033-124-16 | Suction Mouth Ring GH-837 HiCrFC+FC | 1 | Price on req. |
| 113 | 122-246-14 | O-Ring (Brg.Housing/O.Casing) 180xd3.1 NBR | 1 | Price on req. |
| 114 | 122-306-13 | O-Ring 305xd5 NBR | 1 | Price on req. |
| 115 | 022-587-17 | Suction Cover GH-637 FC | 1 | Price on req. |
| 116 | 142-165-10 | Spring Washer M12 SUS304 | 6 | Price on req. |
| 117 | 140-097-14 | Hex.Bolt M12x30 SUS304 | 6 | Price on req. |
| 118 | 142-163-18 | Spring Washer M8 SUS304 | 3 | Price on req. |
| 119 | 141-005-18 | Hex.Nut M8 SUS304 (EN X5CrNi18-10) | 3 | Price on req. |
| 120 | 140-058-42 | Hex.Bolt M8x40 SUS304 (EN X5CrNi18-10) Stainless Steel | 3 | Price on req. |
| 121 | 141-005-18 | Hex.Nut M8 SUS304 (EN X5CrNi18-10) | 3 | Price on req. |
| 122 | 140-055-10 | Hex.Bolt M8x25 SUS304 | 3 | Price on req. |
| 123 | 144-123-12 | Stud Bolt M12x120(20/20) SWRM | 3 | Price on req. |
| 124 | 023-230-15 | Strainer Stand GH-370/450L SS | 1 | Price on req. |
| 125 | 142-165-10 | Spring Washer M12 SUS304 | 3 | Price on req. |
| 126 | 141-007-10 | Hex.Nut M12 SUS304 | 3 | Price on req. |
| 127 | 141-007-10 | Hex.Nut M12 SUS304 | 3 | Price on req. |
| 128 | 142-129-12 | Plain Washer M12 SUS304 | 3 | Price on req. |
| 129 | 142-165-10 | Spring Washer M12 SUS304 | 3 | Price on req. |
| 130 | 043-102-19 | Cathodic Protection Plate AB-1HS(75x70x20t) Al | 3 | Price on req. |
| 131 | 140-096-13 | Hex.Bolt M12x25 SUS304 | 3 | Price on req. |
| | 173-511-11 | Packing & O-Ring Set | 1 | Price on req. |
| | ##oilVG32 | ml Turbine Oil ISO VG32 | 5340 | Price on req. |
| | 183-011-17 | Impeller Puller A No.6 2" FC | 1 | Price on req. |

Exploded View LH845-50



LH845-50