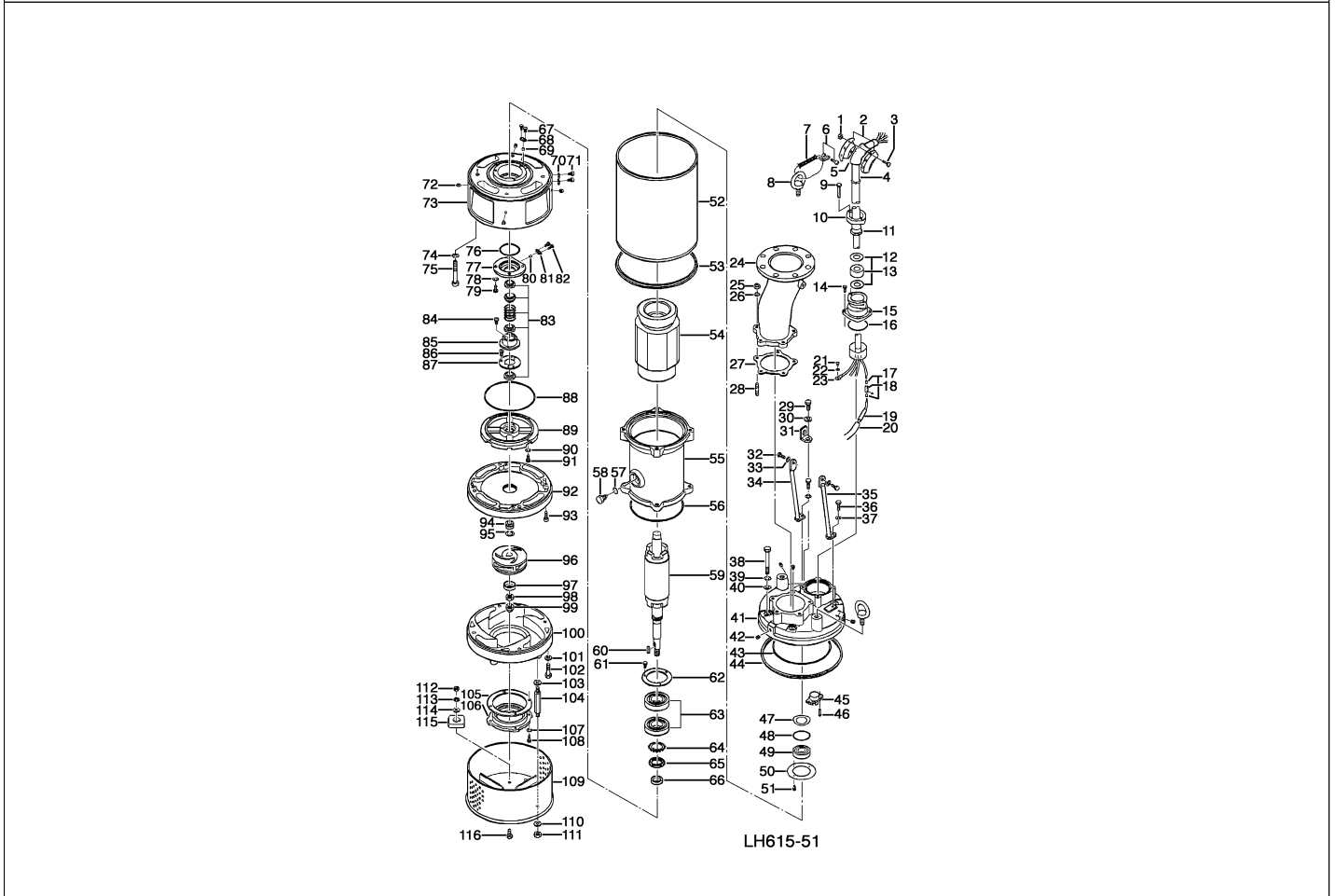


LH615-51

Kontroll-Nr. --

2024-04-11 V.01.02.2023

Pos.no	Item no.	Description	Qty.	UP / EUR
--------	----------	-------------	------	----------



1.1.1	173-000-20	Packing & O-Ring Set	1	
1	141-004-17	Hex. Nut M6 SUS304 SUS304 (EN X5CrNi18-10) Stainless	3	
2	010-101-16	Cable Clip No.3 SPC	2	
3	140-035-27	Hex.Bolt M6x20 SUS304 (EN X5CrNi18-10) Stainless Steel	3	
4	001-TEG-23	Cabtyre Cable Set (20m) H07RN-F4Cx6mm ² with stuffing box	1	
4	M01-TEG-23	Cabtyre Cable Set (20m) NSSHÖU 4Cx6mm ²	1	
5	010-128-19	Cable Clip Rubber 75x80x2t NBR	1	
6	011-110-11	Shackle 6mm SS	1	
7	095-132-19	Chain 4mm SS	1	
8	072-107-27	Eye Bolt M16 SUS304	2	
9	140-078-19	Hex.Bolt M10x30 SUS304	2	
10	003-105-18	Gland No.3 FC	1	
11	002-105-15	Cable Protection Tube No.5 NBR	1	
12	005-103-12	Bush Washer d29xd53.5x3.2t SPC	2	
13	004-110-19	Cable Bush No.6 SBR	1	
14	140-055-10	Hex.Bolt M8x25 SUS304	4	
15	006-160-10	Stuffing Box GHZ-311W FC	1	
16	122-128-19	O-Ring G-85(84.4xd3.1) NBR	1	
17	009-128-15	Terminal E (middle) CU	6	
18	009-118-12	Terminal(C/W Screw) d12x(d8xd8)x25t BSBM	3	
19	002-115-18	Heat Shrink Tube (Sold per meter) EVA(d16.5x1t) (Vm)	1	
20	002-116-19	Heat Shrink Tube (Sold per meter) A4(d20x0.35t) (Vm)	1	
21	143-041-12	Pan Screw M6x8 SWRM	1	
22	142-126-48	Plain Washer M6 C3604	1	Price on req.
23	009-107-18	Terminal R-14-6 CU	1	
24	037-000-67	Center-Flange Discharge Pipe LH615-51/61 FCD	1	
25	141-007-10	Hex.Nut M12 SUS304	5	
26	142-165-10	Spring Washer M12 SUS304 (EN X5CrNi18-10) Stainless Steel	5	Price on req.
27	121-374-19	Packing d140xd172x1t THREE SHEET	1	
28	144-000-46	Stud Bolt M12x64(24/27) SUS304	5	
31	070-103-10	L-Shape Fitting KT-55 SPC	1	
32	140-097-14	Hex.Bolt M12x30 SUS304	2	
33	142-165-10	Spring Washer M12 SUS304 (EN X5CrNi18-10) Stainless Steel	2	Price on req.
34	127-283-18	Stay 2 LH615-51/61For (Left) SS	1	
35	127-282-17	Stay 1 LH615-51/61For (Right) SS	1	
36	140-097-14	Hex.Bolt M12x30 SUS304	2	
37	142-165-10	Spring Washer M12 SUS304 (EN X5CrNi18-10) Stainless Steel	2	Price on req.
38	140-113-17	Hex.Bolt M12x120 SUS304	4	
39	142-165-10	Spring Washer M12 SUS304 (EN X5CrNi18-10) Stainless Steel	4	Price on req.
40	142-298-13	Seal Washer SM-12 SUS+NBR	4	

LH615-51

Kontroll-Nr. --

2024-04-11 V.01.02.2023

Pos.no	Item no.	Description	Qty.	UP / EUR
41	050-494-13	Motor Bracket FC	1	
42	144-584-15	Hex.Socket Cap Screw M12x16 SUS304	4	
43	122-247-15	O-Ring 228.19xd3.53 NBR	1	
44	121-565-19	Packing d289xd300.4x10t NBR	1	
45	053-000-54	Motor Protector 400/415/440V-50HZ KA315-JKAL00 (B.C)	1	
46	143-019-11	Pan Screw M4x16 SWRM	2	
47	142-198-12	Wave Washer 6306 SK5	1	Price on req.
48	122-245-13	O-Ring 71.4xd3.1 NBR	1	
49	052-109-14	Bearing 6306ZC3	1	
50	058-000-11	Lead Wire Protection Plate d74xd175x1.2t SPCC	1	
51	140-002-25	Hex.Bolt M4x8 SWRM	2	Price on req.
52	065-386-17	Outer Cover SS	1	
53	121-565-19	Packing d289xd300.4x10t NBR	1	
54	056-420-16	Stator	1	Price on req.
55	064-571-18	Motor Frame FC	1	
56	122-148-15	O-Ring G-185(184.3xd5.7) NBR	1	
57	122-259-10	O-Ring 12xd3 NBR	1	
58	144-490-13	Stator Set Bolt M12(B=21) SUS403	1	
59	055-885-10	Rotor	1	
60	147-023-10	Impeller Key 7x7x32L SUS420	1	
61	140-033-25	Hex.Bolt M6x16 SWRM	3	
62	062-223-16	Bearing Fixing Plate d92xd130x4.5t SS	1	
63	052-140-17	Bearing 6309ZD2C3	1	
64	142-242-12	Bearing Washer AW09 SPCC	1	
65	141-074-18	Bearing Nut AN09 SS	1	
66	026-217-15	Oil Seal SC-35508 NBR	1	
67	140-016-19	Hex.Bolt M5x12 SUS304	2	
68	003-219-16	Gland SPHC	1	
69	032-423-15	Bush d9.5x18.5L NBR	1	
70	121-247-12	Packing d12.3xd18x2t PE	2	
71	035-113-18	Oil Plug M12x14 SUS304 (EN X5CrNi18-10) Stainless Steel	2	Price on req.
72	144-584-15	Hex.Socket Cap Screw M12x16 SUS304	4	
73	060-490-10	Bearing Housing FC	1	
74	142-165-10	Spring Washer M12 SUS304 (EN X5CrNi18-10) Stainless Steel	4	Price on req.
75	140-517-15	Hex.Socket Cap Bolt M12x150 SUS304	4	
76	122-127-18	O-Ring G-80(79.4xd3.1) NBR	1	
77	028-169-17	Seal Housing LH615-51/61 FC	1	
78	142-163-21	Spring Washer M8 SUS316 (DIN 1.4401) Stainless Steel	4	
79	140-055-10	Hex.Bolt M8x25 SUS304	4	
80	032-423-15	Bush d9.5x18.5L NBR	1	
81	003-219-16	Gland SPHC	1	
82	140-016-19	Hex.Bolt M5x12 SUS304	2	
83	025-001-02	Mechanical Seal H-30T(T) SIC	1	
84	143-070-23	Pan Screw M5x6 SWRM	2	
85	030-142-11	Oil Lifter H-30(A)(T) Resin	1	
86	143-070-23	Pan Screw M5x6 SWRM	3	
87	030-151-13	Seal Stopper H-30(A)(T) SPCC	1	
88	122-333-19	O-Ring 170xd3.1 NBR	1	
89	029-397-19	Oil Casing LH47.5/411/615-51/61 FC	1	
90	142-163-21	Spring Washer M8 SUS316 (DIN 1.4401) Stainless Steel	4	
91	140-055-10	Hex.Bolt M8x25 SUS304	4	
92	020-000-32	Upper Pump Casing (w/Labyrinth Ring) LH615-51/61 FCD	1	
93	140-270-13	Hex.Socket Cap Bolt M8x30 SUS304	4	
94	040-107-28	Impeller Shim d25.2xd38x0.3t SUS304	1	
95	071-000-02	Shaft Sleeve LH47.5/411/615-51/61 SUS403	1	
96	021-A00-31	Impeller (50Hz) LH615-51 HiCrFC	1	
97	047-105-27	Impeller Thread Protect.Cover No.4(22) SUS304	1	
98	141-009-38	Hex.Nut M20(H=12) SUS304	1	
99	141-034-16	Hex.Cap Nut M20 SUS304	1	
100	020-B72-19	Pump Casing (Lower) LH615-51/61 FCD	1	
101	142-165-10	Spring Washer M12 SUS304 (EN X5CrNi18-10) Stainless Steel	4	Price on req.
102	140-110-14	Hex.Bolt M12x95 SUS304	4	
103	142-165-10	Spring Washer M12 SUS304 (EN X5CrNi18-10) Stainless Steel	4	Price on req.
104	144-535-11	Stud Bolt M12x110(20/20) SUS403	4	
105	120-175-15	Packing (S.Cover) LH615/422/430-51/61 PE	1	
106	022-000-09	Suction Cover (w/Mouth Ring) LH615/422/430-51/61 FC	1	
107	142-164-19	Spring Washer M10 SUS304	4	
108	140-074-15	Hex.Bolt M10x20 SUS304	4	
109	023-475-14	Strainer Stand For LH615 SS	1	
110	142-165-10	Spring Washer M12 SUS304 (EN X5CrNi18-10) Stainless Steel	4	Price on req.
111	141-007-10	Hex.Nut M12 SUS304	4	
112	141-007-10	Hex.Nut M12 SUS304	4	
113	142-165-10	Spring Washer M12 SUS304 (EN X5CrNi18-10) Stainless Steel	4	Price on req.
114	142-129-12	Plain Washer M12 SUS304	4	
115	043-102-19	Cathodic Protection Plate AB-1HS(75x70x20t) AI	4	
116	140-096-13	Hex.Bolt M12x25 SUS304	4	
	173-000-20	Packing & O-Ring Set	1	
	##oilVG32	ml Turbine Oil ISO VG32	3740	Price on req.