

LH615-50

Kontroll-Nr. --

2019-02-2C V.01.02.2019

Pos.no	Item no.	Description	Quant.	UP
		Dichtungs-Oring-Satz	1	Price on req.
1	140-029-15	Hex.Bolt M6x10 SUS304 (EN X5CrNi18-10) Stainless Steel	2	Price on req.
2	010-147-14	Cable Clip LH615 SPC	1	Price on req.
3	001-TEG-23	Cabtyre Cable Set (20m) H07RN-F4Cx6mm ² with stuffing box	1	Price on req.
3	M01-TEG-23	Cabtyre Cable Set (20m) NSSHÖU 4Cx6mm ²	1	Price on req.
4	140-083-33	Hex.Bolt M10x60 SUS304 (EN X5CrNi18-10) Stainless Steel	2	Price on req.
5	141-006-19	Hex.Nut M10 SUS304 (EN X5CrNi18-10)	2	Price on req.
6	003-105-18	Gland No.3 FC	1	Price on req.
7	002-105-15	Cable Protection Tube No.5 NBR	1	Price on req.
8	005-103-12	Bush Washer d29xd53.5x3.2t SPC	2	Price on req.
9	004-110-19	Cable Bush No.6 SBR	1	Price on req.
10	006-160-10	Stuffing Box GHZ-311W FC	1	Price on req.
11	140-055-10	Hex.Bolt M8x25 SUS304	4	Price on req.
12	122-128-19	O-Ring G-85(84.4xd3.1) NBR	1	Price on req.
13	009-128-15	Terminal E (middle) CU	6	Price on req.
14	009-118-12	Terminal(C/W Screw) d12x(d8xd8)x25l BSBM	3	Price on req.
15	143-042-13	Pan Screw M6x10 SWRM	1	Price on req.
16	142-162-33	Spring Washer M6 SWRH	1	Price on req.
17	009-107-18	Terminal R-14-6 CU	1	Price on req.
18	002-115-18	Heat Shrink Tube (Sold per meter) EVA(d16.5x1t) (Vm)	1	Price on req.
19	002-116-19	Heat Shrink Tube (Sold per meter) A4(d20x0.35t) (Vm)	1	Price on req.
20	037-000-66	Discharge Pipe LH615 FCD	1	Price on req.
21	141-007-10	Hex.Nut M12 SUS304	5	Price on req.
22	142-165-10	Spring Washer M12 SUS304	5	Price on req.
23	144-000-46	Stud Bolt M12x64(24/27) SUS304	5	Price on req.
24	121-374-19	Packing d140xd172x1t THREE SHEET	1	Price on req.
25	140-110-14	Hex.Bolt M12x95 SUS304	4	Price on req.
26	142-165-10	Spring Washer M12 SUS304	4	Price on req.
27	142-298-13	Seal Washer SM-12 SUS+NBR	4	Price on req.
28	050-427-15	Motor Bracket FC	1	Price on req.
29	016-112-18	Lead Wire Protection Bush GH-645/845(for 3 cores) SBR	1	Price on req.
30	072-102-22	Eye Bolt M12 SUS304 (EN X5CrNi18-10) Stainless Steel	2	Price on req.
31	122-282-12	O-Ring 295xd4 NBR	1	Price on req.
32	053-	Motor Protector	1	Price on req.
33	143-019-11	Pan Screw M4x16 SWRM	2	Price on req.
34	142-198-12	Wave Washer 6306 SK5	1	Price on req.
35	122-245-13	O-Ring 71.4xd3.1 NBR	1	Price on req.
36	052-109-14	Bearing 6306ZZC3	1	Price on req.
37	058-169-10	Lead Wire Protection Plate d74xd120x1.15t SPCC	1	Price on req.
38	140-002-25	Hex.Bolt M4x8 SWRM	2	Price on req.
39	065-187-16	Outer Cover GH-615 SS	1	Price on req.
40	055-716-19	Rotor	1	Price on req.
41	147-063-12	Impeller Key 7x7x36l Stainless Steel	1	Price on req.
42	056-A54-15	Stator	1	Price on req.
43	122-247-15	O-Ring 228.19xd3.53 NBR	1	Price on req.
44	064-387-15	Motor Frame FC	1	Price on req.
45	122-259-10	O-Ring 12xd3 NBR	2	Price on req.
46	144-490-13	Stator Set Bolt M12(B=21) SUS403	1	Price on req.
47	122-138-12	O-Ring G-135 NBR	1	Price on req.
48	122-147-14	O-Ring G-180 NBR	1	Price on req.
49	140-033-25	Hex.Bolt M6x16 SWRM	3	Price on req.
50	062-223-16	Bearing Fixing Plate d92xd130x4.5t SS	1	Price on req.
51	052-140-17	Bearing 6309ZZD2C3	1	Price on req.
52	142-242-12	Bearing Washer AW09 SPCC	1	Price on req.
53	141-074-18	Bearing Nut AN09 SS	1	Price on req.
54	026-217-15	Oil Seal SC-35508 NBR	1	Price on req.
55	122-282-12	O-Ring 295xd4 NBR	1	Price on req.
56	060-415-11	Bearing Housing FC	1	Price on req.
57	142-165-10	Spring Washer M12 SUS304	4	Price on req.
58	140-303-16	Hex. Socket Cap Bolt M12x40 SUS304 (EN X5CrNi18-10) Stainless Steel	4	Price on req.
59	121-247-12	Packing d12.3xd18x2t PE	1	Price on req.
60	035-113-18	Oil Plug M12x14 SUS304	1	Price on req.
61	144-422-27	Stud Bolt M12x58(22/18) SUS304 (EN X5CrNi18-10) Stainless Steel	4	Price on req.
62	122-282-12	O-Ring 295xd4 NBR	1	Price on req.
63	025-001-22	Mechanical Seal HT-3035N SiC	1	Price on req.
64, 65	143-070-23	Pan Screw M5x6 SWRM	2	Price on req.
64, 65	030-138-14	Oil Lifter HT-3035 Resin	1	Price on req.
64, 65	143-070-10	Pan Screw M5x6 SWRM	6	Price on req.
64, 65	030-147-16	Seal Stopper HT-3035 SPCC	1	Price on req.
66	122-281-11	O-Ring 190xd3.1 NBR	1	Price on req.
67	029-340-17	Oil Casing LH615 FC	1	Price on req.
68	142-163-21	Spring Washer M8 SUS316 (DIN 1.4401) Stainless Steel	4	Price on req.
69	140-055-10	Hex.Bolt M8x25 SUS304	4	Price on req.
70	071-198-19	Shaft Sleeve d25xd35x17l SUS403 (EN X6Cr13) Stainless Steel	1	Price on req.
71	122-246-14	O-Ring (Brq.Housing/O.Casing) 180xd3.1 NBR	1	Price on req.
72	020-A79-15	Pump Casing (Upper) LH615(w/Labyrinth Ring) FC	1	Price on req.
73	142-165-10	Spring Washer M12 SUS304	4	Price on req.
74	141-007-10	Hex.Nut M12 SUS304	4	Price on req.
75	144-426-21	Stud Bolt M12x78(22/18) SUS304 (EN X5CrNi18-10) Stainless Steel	4	Price on req.
76	071-150-19	Shaft Sleeve GH-615 SUS403 (EN X6Cr13) Stainless Steel	1	Price on req.
77	040-107-28	Impeller Shim d25.2xd38x0.3t SUS304	1	Price on req.
78	021-A00-31	Impeller (50Hz) LH615-51 HiCrFC	1	Price on req.
78	021-A00-41	Impeller (60Hz) 60Hz HiCrFC	1	Price on req.

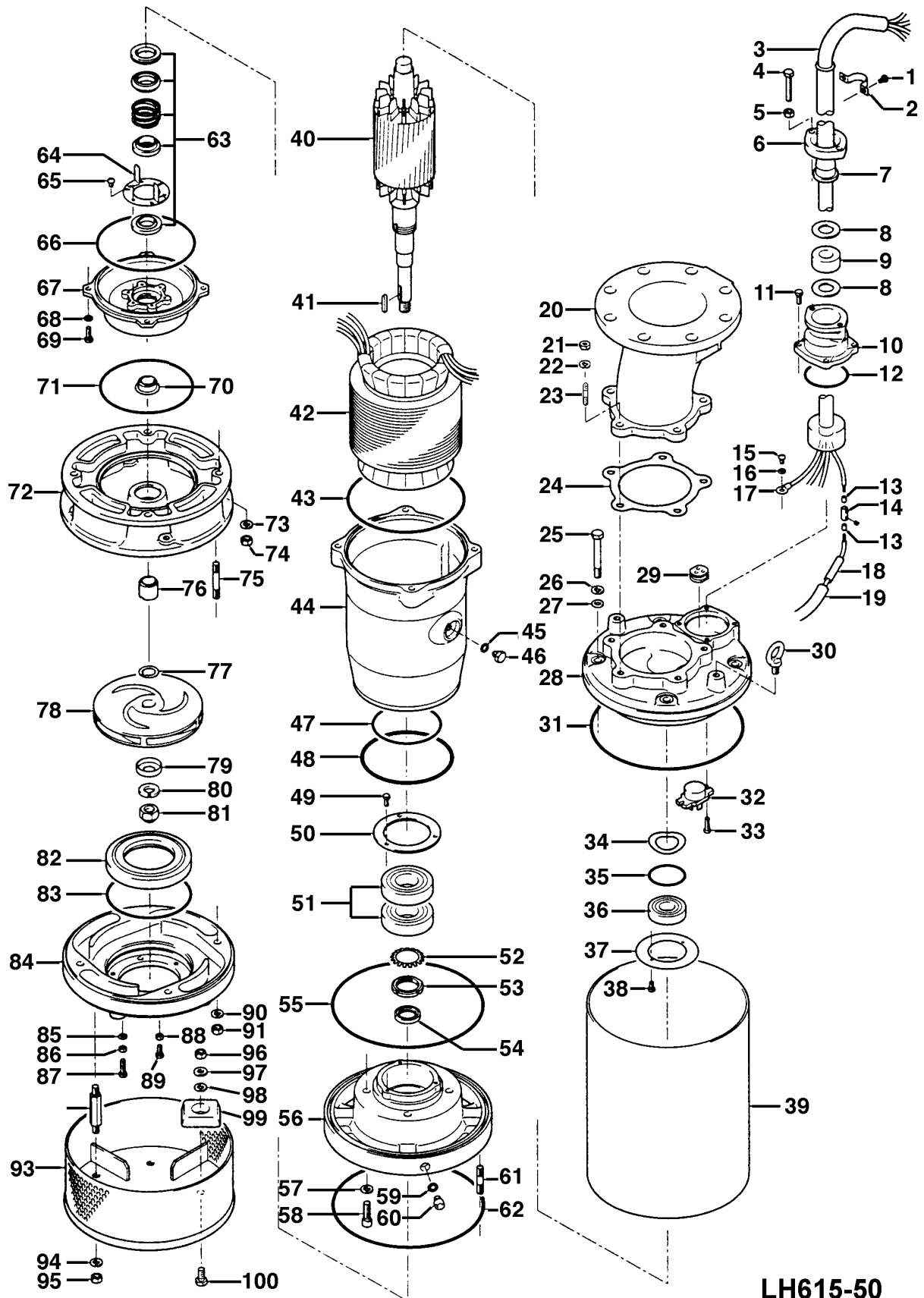
LH615-50

Kontroll-Nr. --

2019-02-20 V.01.02.2019

Pos.no	Item no.	Description	Quant.	UP
79	047-105-27	Impeller Thread Protect.Cover No.4(22) SUS304	1	Price on req.
80	142-168-13	Spring Washer M20 SUS304	1	Price on req.
81	141-034-16	Hex.Cap Nut M20 SUS304	1	Price on req.
82	033-122-14	Suction Mouth Ring GH-615 HiCrFC+FC	1	Price on req.
83	122-283-13	O-Ring 165xd3.1 NBR	1	Price on req.
84	020-983-11	Pump Casing (Lower) LH615 FC	1	Price on req.
85	142-163-21	Spring Washer M8 SUS316 (DIN 1.4401) Stainless Steel	3	Price on req.
86	141-005-18	Hex.Nut M8 SUS304 (EN X5CrNi18-10)	3	Price on req.
87	140-058-42	Hex.Bolt M8x40 SUS304 (EN X5CrNi18-10) Stainless Steel	3	Price on req.
88	141-005-18	Hex.Nut M8 SUS304 (EN X5CrNi18-10)	3	Price on req.
89	140-055-10	Hex.Bolt M8x25 SUS304	3	Price on req.
90	142-165-10	Spring Washer M12 SUS304	4	Price on req.
91	141-007-10	Hex.Nut M12 SUS304	4	Price on req.
92	144-535-11	Stud Bolt M12x110(20/20) SUS403	4	Price on req.
93	023-475-14	Strainer Stand For LH615 SS	1	Price on req.
94	142-165-10	Spring Washer M12 SUS304	4	Price on req.
95	141-007-10	Hex.Nut M12 SUS304	4	Price on req.
96	141-007-10	Hex.Nut M12 SUS304	3	Price on req.
97	142-129-12	Plain Washer M12 SUS304	3	Price on req.
98	142-165-10	Spring Washer M12 SUS304	3	Price on req.
99	043-102-19	Cathodic Protection Plate AB-1HS(75x70x20t) Al	3	Price on req.
100	140-096-13	Hex.Bolt M12x25 SUS304	3	Price on req.
	173-508-15	Packing & O-Ring Set	1	Price on req.
	##oilVG32	ml Turbine Oil ISO VG32	1680	Price on req.

Exploded View LH615-50



LH615-50