

LH430W-51

Kontroll-Nr. --

2019-02-20 V.01.02.2019

Pos.no	Item no.	Description	Quant.	UP
		Packing O-Ring Set	1	Price on req.
1	141-005-18	Hex.Nut M8 SUS304 (EN X5CrNi18-10)	4	Price on req.
2	010-000-36	Cable Clip (N)SSHOU-J SS	1	Price on req.
3	009-113-17	Terminal R-38-10 CU	7	Price on req.
5	009-116-10	Terminal R-2-4 CU	2	Price on req.
6	140-055-10	Hex.Bolt M8x25 SUS304	4	Price on req.
7	011-101-19	Shackle 6mm SS	1	Price on req.
8	095-100-18	Chain d5(9-Link) SS	1	Price on req.
9	072-103-23	Eye Bolt M24 SUS304 (EN X5CrNi18-10) Stainless Steel	2	Price on req.
10	001-TEG-28	Cabtyre Cable Set (20m) H07RN-F LH30kW-LH45kW with stuffing box	1	Price on req.
10	M01-TEG-28(N)	Cabtyre cable (N)SSHÖU 7x35+1x(3x2,5ST) LH430-50, LH430W-51	1	Price on req.
11	140-081-31	Hex.Bolt M10x50 SUS304 (EN X5CrNi18-10) Stainless Steel	4	Price on req.
12	141-006-19	Hex.Nut M10 SUS304 (EN X5CrNi18-10)	4	Price on req.
13	003-000-38	Gland No.9 (N)SSHO FC	1	Price on req.
14	004-000-42	Cable Busch d50Xd75X28.5 NBR	1	Price on req.
16	140-078-19	Hex.Bolt M10x30 SUS304	4	Price on req.
17	142-164-19	Spring Washer M10 SUS304	4	Price on req.
18	006-000-52	Stuffing Box No.9 (N)SSHO FC	1	Price on req.
19	122-135-19	O-Ring G-120(119.4xd3.1) NBR	1	Price on req.
22	141-004-59	Hex.Nut M6 SWRM	7	Price on req.
23	009-108-19	Terminal R-38-6 CU	7	Price on req.
24	009-107-18	Terminal R-14-6 CU	6	Price on req.
25	140-029-28	Hex.Bolt M6x10 SWRM	7	Price on req.
26	002-000-18	Heat Shrink Tube (Sold per meter) W3F2(3/4In) (Vm)	1	Price on req.
27	200-000-23	Electrical tape(30M) 540S(0.18T-30Wx30M)	1	Price on req.
28	009-114-18	Connector PC-4020M	2	Price on req.
30	009-115-19	Connector PC-4020F	2	Price on req.
31	002-128-14	Heat Shrink Tube (Sold per meter) EVA(d10x1t) (Vm)	1	Price on req.
32	002-164-12	Heat Shrink Tube (Sold per meter)A4(d13x0.3t)(JPY /m)	1	Price on req.
33	143-000-58	Pan Screw (w/Spring Washer/Plain Washer) M6x12 SWRM	1	Price on req.
34	009-106-17	Terminal(EUR.NSU) R-8-6 CU	2	Price on req.
35	141-007-10	Hex.Nut M12 SUS304	8	Price on req.
36	142-165-10	Spring Washer M12 SUS304	8	Price on req.
37	144-422-30	Stud Bolt M12x64(22/24) SUS304 (EN X5CrNi18-10) Stainless Steel	8	Price on req.
38	037-351-16	Flanged Discharge Pipe 100mm.JIS20K.GHZ430W SGP+SS	1	Price on req.
39	121-447-14	Packing d78xd152x1t THREE SHEET	1	Price on req.
40	140-134-14	Hex.Bolt M16x90 SUS304 (EN X5CrNi18-10) Stainless Steel	4	Price on req.
41	142-166-11	Spring Washer M16 SUS304	4	Price on req.
42	142-353-17	Seal Washer SM-16 Stainless Steel+NBR	4	Price on req.
43	051-222-11	Motor Head Cover FC	1	Price on req.
44	122-147-14	O-Ring G-180 NBR	1	Price on req.
45	143-028-13	Pan Screw M5x10 SWRM	2	Price on req.
46	214-006-18	Blank Cover d100x1.6t SPC	1	Price on req.
47	016-114-10	Lead Wire Protection Bush For GH-637/837 Type(for 5 cores) SBR	1	Price on req.
48	016-113-19	Lead Wire Protection Bush GH-422/430 Type(for 3 cores) SBR	1	Price on req.
49	140-100-11	Hex.Bolt M12x45 SUS304	6	Price on req.
50	142-165-10	Spring Washer M12 SUS304	6	Price on req.
51	050-407-19	Motor Bracket FC	1	Price on req.
52	142-199-13	Wave Washer #6208/6307 SK-5	1	Price on req.
53	052-110-18	Bearing 6307ZC3	1	Price on req.
54	122-127-18	O-Ring G-80(79.4xd3.1) NBR	1	Price on req.
55	121-454-14	Packing d291xd307.8x16.4t NBR	1	Price on req.
56	065-339-15	Outer Cover GHZ-430W SS	1	Price on req.
57	121-454-14	Packing d291xd307.8x16.4t NBR	1	Price on req.
58	055-764-12	Rotor	1	Price on req.
59	147-132-13	Impeller Key 10x8x25l Stainless Steel	1	Price on req.
60	053-	Motor Protector	3	Price on req.
61	056-001-99	Stator	1	Price on req.
62	122-153-13	O-Ring G-220 NBR	1	Price on req.
63	064-390-24	Motor Frame FC	1	Price on req.
64	122-259-10	O-Ring 12xd3 NBR	1	Price on req.
65	144-490-13	Stator Set Bolt M12(B=21) SUS403	1	Price on req.
66	122-171-17	O-Ring V-150 NBR	1	Price on req.
67	122-150-10	O-Ring G-195 NBR	1	Price on req.
68	121-463-16	Packing (Felt) 4x4.4x217l Felt	2	Price on req.
69	140-055-49	Hex.Bolt M8x25 SWRM	4	Price on req.
70	062-210-10	Bearing Cover d55.5xd160x22t FC	1	Price on req.
71	052-120-11	Bearing 7311ADBC3	1	Price on req.
72	142-244-14	Bearing Washer AW11 SPCC	1	Price on req.
73	141-076-10	Bearing Nut AN11 SS	1	Price on req.
74	026-272-18	Oil Seal SC-50689 NBR	1	Price on req.
75	060-424-13	Bearing Housing FC	1	Price on req.
76	121-247-12	Packing d12.3xd18x2t PE	3	Price on req.
77	035-113-18	Oil Plug M12x14 SUS304	3	Price on req.
78	142-165-10	Spring Washer M12 SUS304	6	Price on req.
79	140-100-11	Hex.Bolt M12x45 SUS304	6	Price on req.
80	122-127-18	O-Ring G-80(79.4xd3.1) NBR	1	Price on req.
81	028-000-27	Seal Housing LH322W/430W-51/61 (FC)	1	Price on req.
82	121-247-12	Packing d12.3xd18x2t PE	1	Price on req.
83	035-113-18	Oil Plug M12x14 SUS304	1	Price on req.
84	142-163-21	Spring Washer M8 SUS316 (DIN 1.4401) Stainless Steel	4	Price on req.
85	140-055-10	Hex.Bolt M8x25 SUS304	4	Price on req.
86	004-176-13	Cable Bush LH322W/430W-51/61 NBR	1	Price on req.

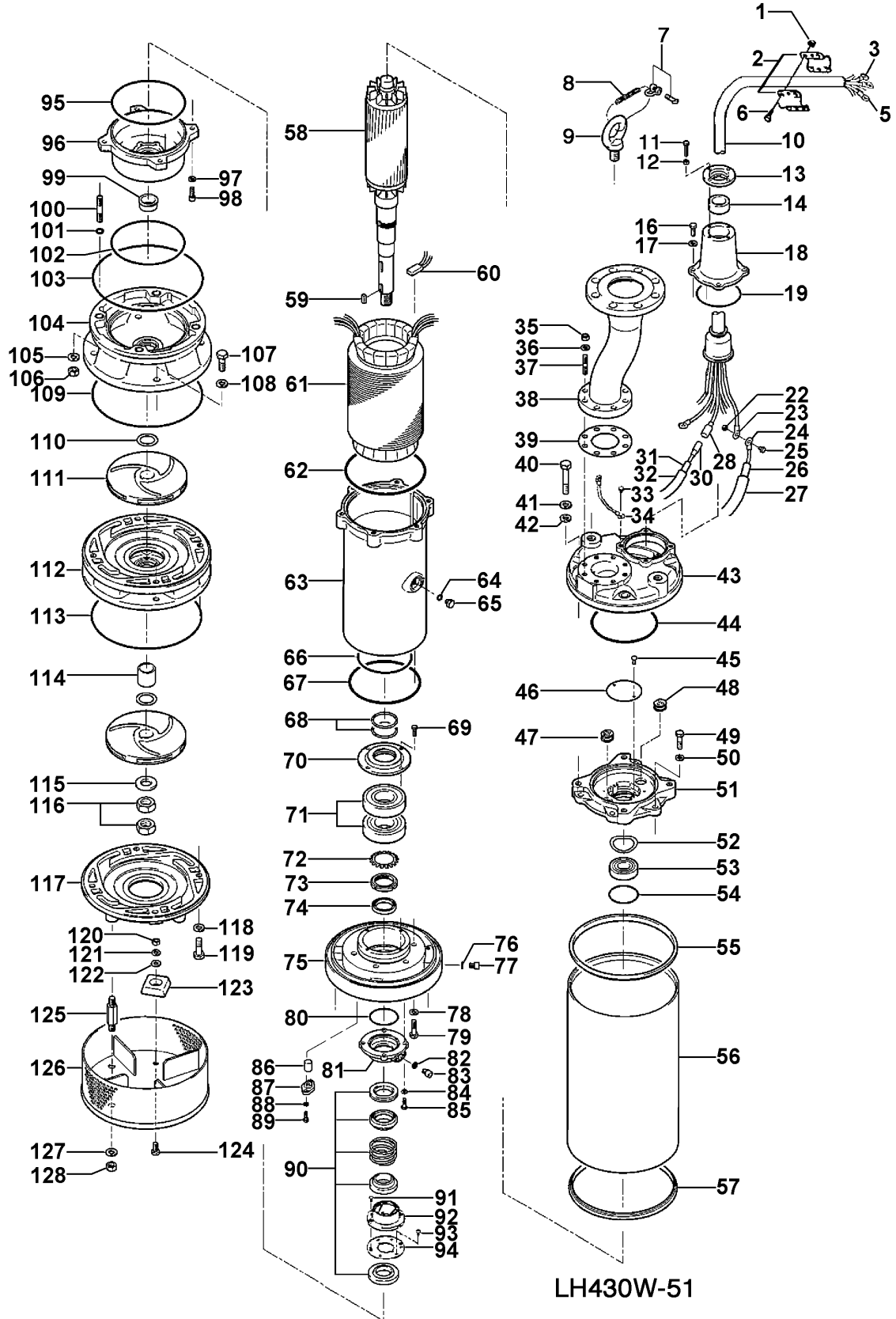
LH430W-51

Kontroll-Nr. --

2019-02-20 V.01.02.2019

Pos.no	Item no.	Description	Quant.	UP
87	003-207-11	Gland LH322W/430W-51/61 FC	1	Price on req.
88	142-161-16	Spring Washer M5 SUS304 (EN X5CrNi18-10) Stainless Steel	2	Price on req.
89	140-019-12	Hex.Bolt M5x16 SUS304 (EN X5CrNi18-10) Stainless Steel	2	Price on req.
90	025-001-24	Mechanical Seal HT-4550N SiC	1	Price on req.
91	025-001-24	Mechanical Seal HT-4550N SiC	2	Price on req.
92	143-070-23	Pan Screw M5x6 SWRM	1	Price on req.
93	030-136-12	Oil Lifter HT-4550 Resin	6	Price on req.
94	143-070-10	Pan Screw M5x6 SWRM	1	Price on req.
95	030-145-14	Seal Stopper HT-4550 SPCC	1	Price on req.
96	029-000-90	Oil Casing LH322W/430W (FC)	1	Price on req.
97	142-164-19	Spring Washer M10 SUS304	4	Price on req.
98	140-286-12	Hex. Socket Cap Bolt M10x30 SUS304 (EN X5CrNi18-10) Stainless Steel	4	Price on req.
99	071-299-11	Shaft Sleeve (Upper) d40xd50x23t SUS403 (EN X6Cr13) Stainless Steel	1	Price on req.
100	144-438-26	Stud Bolt M16x79(24/28) SUS304 (EN X5CrNi18-10) Stainless Steel	4	Price on req.
101	122-016-13	O-Ring P-16(15.8xd2.4) NBR	4	Price on req.
102	122-251-12	O-Ring 205xd3.8 NBR	1	Price on req.
103	122-295-18	O-Ring 310xd3.8 NBR	1	Price on req.
104	020-002-94	Pump Casing (Upper) GHZ-430W(w/Labyrinth Ring) FC+Stainless Steel	1	Price on req.
105	142-166-11	Spring Washer M16 SUS304	4	Price on req.
106	141-008-11	Hex.Nut M16 SUS304 (EN X5CrNi18-10)	4	Price on req.
107	140-125-12	Hex.Bolt M16x45 SUS304	4	Price on req.
108	142-166-11	Spring Washer M16 SUS304	4	Price on req.
109	122-255-16	O-Ring 340xd5 NBR	1	Price on req.
110	040-126-10	Impeller Shim d41.5xd59x0.3t SUS304 (EN X5CrNi18-10) Stainless Steel	1	Price on req.
111	021-F92-12	Impeller (50HZ) 50Hz HiCrFC	2	Price on req.
112	020-002-95	Pump Casing (Middle) w/Mouth Ring, Labyrinth Ring FC	1	Price on req.
113	122-255-16	O-Ring 340xd5 NBR	1	Price on req.
114	071-300-16	Shaft Sleeve (Lower) SUS403 (EN X6Cr13) Stainless Steel	1	Price on req.
115	142-134-10	Plain Washer M30 SUS304 (EN X5CrNi18-10) Stainless Steel	1	Price on req.
116	141-012-50	Hex.Nut M30(H=18) SUS304 (EN X5CrNi18-10)	2	Price on req.
117	020-898-18	Pump Casing (Lower) GHZ-430W(w/Mouth Ring) FC+HiCrFC	1	Price on req.
118	142-166-11	Spring Washer M16 SUS304	4	Price on req.
119	140-126-13	Hex.Bolt M16x50 SUS304 (EN X5CrNi18-10) Stainless Steel	4	Price on req.
120	141-007-10	Hex.Nut M12 SUS304	2	Price on req.
121	142-165-10	Spring Washer M12 SUS304	2	Price on req.
122	142-129-12	Plain Washer M12 SUS304	2	Price on req.
123	043-102-19	Cathodic Protection Plate AB-1HS(75x70x20t) Al	2	Price on req.
124	140-096-13	Hex.Bolt M12x25 SUS304	2	Price on req.
125	144-128-17	Stud Bolt M16x110(24/24) SUS403 (EN X6Cr13)	4	Price on req.
126	023-001-24	Strainer Stand GHZ-430W SS	1	Price on req.
127	142-166-11	Spring Washer M16 SUS304	4	Price on req.
128	141-008-11	Hex.Nut M16 SUS304 (EN X5CrNi18-10)	4	Price on req.
	173-525-18	Packing & O-Ring Set	1	Price on req.
	##oilVG32	ml Turbine Oil ISO VG32	2350	Price on req.

Exploded View LH430W-51



LH430W-51