

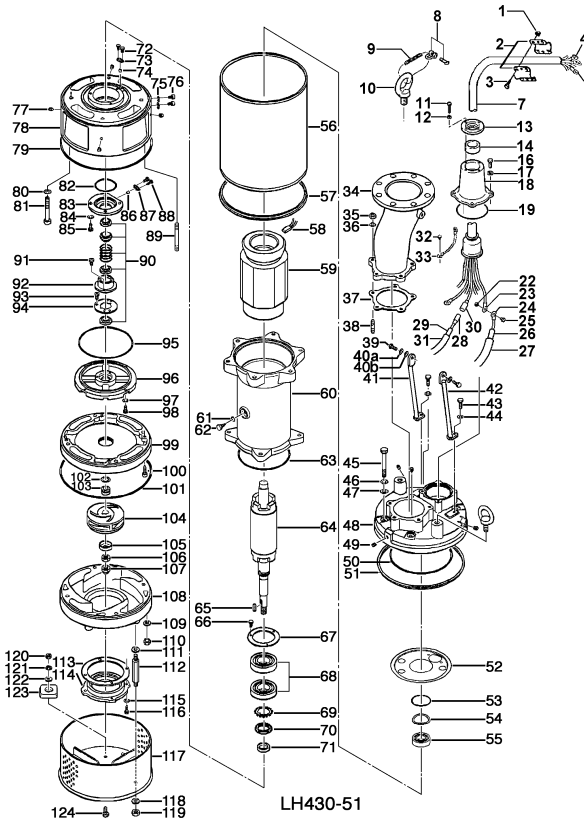
**LH430-51**

Kontroll-Nr. --

2024-04-11 V.01.02.2023

Pos.no	Item no.	Description	Qty.	UP / EUR
--------	----------	-------------	------	----------

LH430-51



1.1.1	173-000-21	Packing & O-Ring Set	1	
1	141-005-18	Hex.Nut M8 SUS304 (EN X5CrNi18-10)	4	
2	010-000-36	Cable Clip (N)SSHOU-J SS	1	
3	140-055-10	Hex.Bolt M8x25 SUS304	4	
4	009-113-17	Terminal R-38-10 CU	7	
6	009-116-10	Terminal R2-4	2	
7	001-TEG-28	Cabletyre Cable Set (20m) H07RN-F LH30kW-LH45kW with stuffing box	1	
7	M01-TEG-28(N)	Cabletyre cable (N)SSHÖU 7x35+1x(3x2,5ST) LH430-50, LH430W-51	1	
8	011-110-11	Shackle 6mm SS	1	
9	095-132-19	Chain 4mm SS	1	
10	072-103-23	Eye Bolt M24 SUS304 (EN X5CrNi18-10) Stainless Steel	2	
11	140-081-31	Hex.Bolt M10x50 SUS304 (EN X5CrNi18-10) Stainless Steel	4	
12	141-006-19	Hex.Nut M10 SUS304 (EN X5CrNi18-10)	4	
13	003-000-38	Gland No.9 (N)SSHO FC	1	
14	004-000-42	Cable Busch d50Xd75X28.5 NBR	1	
16	140-078-19	Hex.Bolt M10x30 SUS304	4	
17	142-164-19	Spring Washer M10 SUS304	4	
18	006-000-52	Stuffing Box No.9 (N)SSHO FC	1	
19	122-135-19	O-Ring G-120(119.4xd3.1) NBR	1	
22	141-004-59	Hex.Nut M6 SWRM	7	
23	009-108-19	Terminal R-38-6 CU	7	
24	009-107-18	Terminal R-14-6 CU	6	
25	140-029-28	Hex.Bolt M6x10 SWRM	7	Price on req.
26	002-000-18	Heat Shrink Tube (Sold per meter) W3F2(3/4IN) (Vm)	1	Price on req.
27	200-000-23	Electrical tape(30M) 540S(0.18T-30Wx30M)	1	Price on req.
28	009-115-19	Connector PC-4020F	2	
29	002-128-14	Heat Shrink Tube (Sold per meter) EVA(d10x1t) (Vm)	1	
30	009-114-18	Connector PC-4020M	2	
31	002-164-12	Heat Shrink Tube (Sold per meter)A4(d13x0.3t)(JPY /m)	1	
32	143-000-58	Pan Screw (w/Spring Washer/Plain Washer) M6x12 SWRM	1	
33	009-106-17	Terminal(EUR,NSU) R-8-6 CU	2	
34	037-429-16	Center-Flange Discharge Pipe For LH422/430-51/61 FCD	1	
35	141-007-10	Hex.Nut M12 SUS304	5	
36	142-165-10	Spring Washer M12 SUS304 (EN X5CrNi18-10) Stainless Steel	5	Price on req.
37	121-374-19	Packing d140xd172x1t THREE SHEET	1	
38	144-000-46	Stud Bolt M12x64(24/27) SUS304	5	
39	140-098-15	Hex.Bolt M12x35 SUS304	2	
40a	142-165-10	Spring Washer M12 SUS304 (EN X5CrNi18-10) Stainless Steel	2	Price on req.
40b	142-129-12	Plain Washer M12 SUS304	2	
41	127-287-12	Stay 2 LH422/430-51/61For (Left) SS	1	

**LH430-51**

Kontroll-Nr. --

2024-04-11 V.01.02.2023

Pos.no	Item no.	Description	Qty.	UP / EUR
42	127-286-11	Stay 1 LH422/430-51/61For (Right) SS	1	
43	140-097-14	Hex.Bolt M12x30 SUS304	2	
44	142-165-10	Spring Washer M12 SUS304 (EN X5CrNi18-10) Stainless Steel	2	Price on req.
45	140-138-18	Hex.Bolt M16x130 SUS304 (EN X5CrNi18-10) Stainless Steel	6	
46	142-166-11	Spring Washer M16 SUS304	6	
47	142-353-17	Seal Washer SM-16 Stainless Steel+NBR	6	
48	050-495-14	Motor Bracket FC	1	
49	144-584-15	Hex.Socket Cap Screw M12x16 SUS304	4	
50	122-157-17	O-Ring G-260 NBR	1	
51	121-593-16	Packing LH619/422/430(L Type) NBR	1	
52	058-203-17	Lead Wire Protection Plate d108xd269x3.2t SPCC	1	
53	122-127-18	O-Ring G-80(79.4xd3.1) NBR	1	
54	142-199-13	Wave Washer #6208/6307 SK-5	1	
55	052-110-18	Bearing 6307ZZC3	1	
56	065-387-18	Outer Cover SS	1	
57	121-593-16	Packing LH619/422/430(L Type) NBR	1	
58	053-309-19	Motor Protector 9700K-46-215 (H)	3	
59	056-423-19	Stator	1	Price on req.
60	064-572-19	Motor Frame FC	1	
61	122-259-10	O-Ring 12xd3 NBR	1	
62	144-490-13	Stator Set Bolt M12(B=21) SUS403	1	
63	122-153-13	O-Ring G-220 NBR	1	
64	055-888-13	Rotor	1	
65	147-064-13	Impeller Key 7x7x37.5l Stainless Steel	1	
66	140-033-25	Hex.Bolt M6x16 SWRM	3	
67	062-177-14	Bearing Fixing Plate SS	1	
68	052-142-19	Bearing 6311ZZD2C3	1	
69	142-244-14	Bearing Washer AW11 SPCC	1	
70	141-076-10	Bearing Nut AN11 SS	1	
71	026-271-17	Oil Seal SC-40588 NBR	1	
72	140-016-19	Hex.Bolt M5x12 SUS304	2	
73	003-219-16	Gland SPHC	1	
74	032-423-15	Bush d9.5x18.5L NBR	1	
75	121-247-12	Packing d12.3xd18x2t PE	2	
76	035-113-18	Oil Plug M12x14 SUS304 (EN X5CrNi18-10) Stainless Steel	2	Price on req.
77	144-584-15	Hex.Socket Cap Screw M12x16 SUS304	4	
78	060-491-11	Bearing Housing FC	1	
79	122-258-19	O-Ring 395xd5 NBR	1	
80	142-166-11	Spring Washer M16 SUS304	4	
81	140-518-16	Hex. Socket Cap Bolt M16x170 SUS304 (EN X5CrNi18-10) Stainless Steel	4	
82	122-129-10	O-Ring (M.Frame/O.Casing) G-90(89.4xd3.1) NBR	1	
83	028-170-11	Seal Housing For LH619/422/622/430-51/61 FC	1	
84	142-163-21	Spring Washer M8 SUS316 (DIN 1.4401) Stainless Steel	4	
85	140-055-10	Hex.Bolt M8x25 SUS304	4	
86	032-423-15	Bush d9.5x18.5L NBR	1	
87	003-219-16	Gland SPHC	1	
88	140-016-19	Hex.Bolt M5x12 SUS304	2	
89	144-444-25	Stud Bolt M16x100(28/24) SUS304 (EN X5CrNi18-10) Stainless Steel	4	
90	025-001-03	Mechanical Seal H-35T SiC	1	
91	143-070-23	Pan Screw M5x6 SWRM	2	
92	030-156-18	Oil Lifter H-35(A)(T) Resin	1	
93	143-070-23	Pan Screw M5x6 SWRM	3	
94	030-150-12	Seal Stopper H-35(A)(T) SPCC	1	
95	122-250-11	O-Ring 230xd3.8 NBR	1	
96	029-398-10	Oil Casing For LH619/422/622/430-51/61 FC	1	
97	142-164-19	Spring Washer M10 SUS304	4	
98	140-078-19	Hex.Bolt M10x30 SUS304	4	
99	020-000-33	Upper Pump Casing (w/Labyrinth Ring) For LH619/422/622/430-51/61 FCD	1	
100	140-289-15	Hex. Socket Cap Bolt M10x40 SUS304 (EN X5CrNi18-10) Stainless Steel	4	
101	122-258-19	O-Ring 395xd5 NBR	1	
102	040-125-19	Impeller Shim d31xd45.2x0.5t SUS304 (EN X5CrNi18-10) Stainless Steel	1	
103	071-000-03	Shaft Sleeve For LH619/422/622/430-51/61 SUS403 (EN X6Cr13) Stainless Steel	1	
104	021-R19-15	Impeller (50HZ) For LH430-51 CR	1	
105	047-106-28	Impeller Thread Protect.Cover No.5(26) SUS304 (EN X5CrNi18-10) Stainless Steel	1	
106	141-011-20	Hex.Nut M24(H=14) SUS304 (EN X5CrNi18-10) Stainless Steel	2	
107	141-035-17	Hex.Cap Nut M24 SUS304 (EN X5CrNi18-10) Stainless Steel	1	
108	020-B74-11	Pump Casing (Lower) For LH422/430-51/61 FCD	1	
109	142-166-11	Spring Washer M16 SUS304	4	
110	141-008-11	Hex.Nut M16 SUS304 (EN X5CrNi18-10)	4	
111	142-165-10	Spring Washer M12 SUS304 (EN X5CrNi18-10) Stainless Steel	4	Price on req.
112	144-573-11	Stud Bolt M12x164(22/22) SUS403 (EN X6Cr13) Stainless Steel	4	
113	120-175-15	Packing (S.Cover) LH615/422/430-51/61 PE	1	
114	022-000-09	Suction Cover (w/Mouth Ring) LH615/422/430-51/61 FC	1	
115	142-164-19	Spring Washer M10 SUS304	4	
116	140-075-16	Hex.Bolt M10x25 SUS304	4	
117	023-001-29	Strainer Stand For LH422/430-51/61 SS	1	
118	142-165-10	Spring Washer M12 SUS304 (EN X5CrNi18-10) Stainless Steel	4	Price on req.
119	141-007-10	Hex.Nut M12 SUS304	4	
120	141-007-10	Hex.Nut M12 SUS304	4	
121	142-165-10	Spring Washer M12 SUS304 (EN X5CrNi18-10) Stainless Steel	4	Price on req.
122	142-129-12	Plain Washer M12 SUS304	4	
123	043-102-19	Cathodic Protection Plate AB-1HS(75x70x20t) Al	4	
124	140-096-13	Hex.Bolt M12x25 SUS304	4	