

LH422-51

Kontroll-Nr. --

2019-02-2C V.01.02.2019

Pos.no	Item no.	Description	Quant.	UP
		Packing O-Ring Set	2	Price on req.
1	141-005-18	Hex.Nut M8 SUS304 (EN X5CrNi18-10)	6	Price on req.
2	010-143-10	Cable Clip No.5 SPC	4	Price on req.
3	140-054-19	Hex.Bolt M8x20 SUS304 (EN X5Cr18-10)	6	Price on req.
4	001-TEG-25	Cabtyre Cable Set (20m) H07RN-F4Cx10mm <sup>2</sup> with stuffing box	2	Price on req.
4	M01-TEG-25	Cabtyre Cable Set (20m) NSSHÖU 4Cx10mm <sup>2</sup>	2	Price on req.
5	011-110-11	Shackle 6mm SS	2	Price on req.
6	095-132-19	Chain 4mm SS	2	Price on req.
7	072-103-23	Eye Bolt M24 SUS304 (EN X5CrNi18-10) Stainless Steel	4	Price on req.
8	140-056-53	Hex.Bolt M8x30 SUS304 (EN X5Cr18-10)	8	Price on req.
9	141-005-18	Hex.Nut M8 SUS304 (EN X5CrNi18-10)	8	Price on req.
10	003-000-15	Gland KRS-819/822 FC	2	Price on req.
11	004-134-19	Cable Bush d33xd58.5x24l NBR	2	Price on req.
12	005-123-18	Bush Washer d35xd57x3.2t SPC	2	Price on req.
13	140-078-19	Hex.Bolt M10x30 SUS304	8	Price on req.
14	142-164-19	Spring Washer M10 SUS304	8	Price on req.
15	006-119-27	Stuffing Box KRS-8L FC	2	Price on req.
16	122-135-19	O-Ring G-120(119.4xd3.1) NBR	2	Price on req.
17	008-132-19	Mould Cover KRS-819/822(L) NBR	2	Price on req.
18	003-149-14	Gland (Lower) No.5 FC	2	Price on req.
19	140-033-12	Hex.Bolt M6x16 SUS304 (EN X5CrNi18-10) Stainless Steel	8	Price on req.
20	141-004-46	Hex.Nut M6 BSBM	6	Price on req.
21	009-168-17	Terminal R-22-S6 CU	6	Price on req.
22	009-168-17	Terminal R-22-S6 CU	12	Price on req.
23	140-029-31	Hex.Bolt M6x10 BSBM	6	Price on req.
24	002-115-18	Heat Shrink Tube (Sold per meter) EVA(d16.5x1t) (V/m)	2	Price on req.
25	002-116-19	Heat Shrink Tube (Sold per meter) A4(d20x0.35t) (V/m)	2	Price on req.
26	143-041-12	Pan Screw M6x8 SWRM	2	Price on req.
27	142-126-48	Plain Washer M6 C3604	2	Price on req.
28	009-107-18	Terminal R-14-6 CU	6	Price on req.
29	037-429-16	Center-Flange Discharge Pipe For LH422/430-51/61 FCD	2	Price on req.
30	141-007-10	Hex.Nut M12 SUS304	10	Price on req.
31	142-165-10	Spring Washer M12 SUS304	10	Price on req.
32	121-374-19	Packing d140xd172x1t THREE SHEET	2	Price on req.
33	144-000-46	Stud Bolt M12x64(24/27) SUS304	10	Price on req.
34	140-098-15	Hex.Bolt M12x35 SUS304	4	Price on req.
35	142-165-10	Spring Washer M12 SUS304	4	Price on req.
36	127-287-12	Stay 2 LH422/430-51/61For (Left) SS	2	Price on req.
37	127-286-11	Stay 1 LH422/430-51/61For (Right) SS	2	Price on req.
38	140-097-14	Hex.Bolt M12x30 SUS304	4	Price on req.
39	142-165-10	Spring Washer M12 SUS304	4	Price on req.
40	140-138-18	Hex.Bolt M16x130 SUS304 (EN X5CrNi18-10) Stainless Steel	12	Price on req.
41	142-166-11	Spring Washer M16 SUS304	12	Price on req.
42	142-353-17	Seal Washer SM-16 Stainless Steel+NBR	12	Price on req.
43	050-495-14	Motor Bracket FC	2	Price on req.
44	144-584-15	Hex.Socket Cap Screw M12x16 SUS304	8	Price on req.
45	122-157-17	O-Ring G-260 NBR	2	Price on req.
46	121-593-16	Packing LH619/422/430(L Type) NBR	2	Price on req.
47	143-032-10	Pan Screw M5x16 SWRM	4	Price on req.
48	053-000-58	Motor Protector 346/380V-50HZ KA316-NSTL00 (B.C)	2	Price on req.
49	058-203-17	Lead Wire Protection Plate d108xd269x3.2t SPCC	2	Price on req.
50	122-127-18	O-Ring G-80(79.4xd3.1) NBR	2	Price on req.
51	142-199-13	Wave Washer #6208/6307 SK-5	2	Price on req.
52	052-110-18	Bearing 6307ZC3	2	Price on req.
53	065-387-18	Outer Cover SS	2	Price on req.
54	121-593-16	Packing LH619/422/430(L Type) NBR	2	Price on req.
55	056-422-18	Stator	2	Price on req.
56	064-572-19	Motor Frame FC	2	Price on req.
57	122-259-10	O-Ring 12xd3 NBR	2	Price on req.
58	144-490-13	Stator Set Bolt M12(B=21) SUS403	2	Price on req.
59	122-153-13	O-Ring G-220 NBR	2	Price on req.
60	055-887-12	Rotor	2	Price on req.
61	147-064-13	Impeller Key 7x7x37.5l Stainless Steel	2	Price on req.
62	140-033-25	Hex.Bolt M6x16 SWRM	6	Price on req.
63	062-177-14	Bearing Fixing Plate SS	2	Price on req.
64	052-142-19	Bearing 6311ZZD2C3	2	Price on req.
65	142-244-14	Bearing Washer AW11 SPCC	2	Price on req.
66	141-076-10	Bearing Nut AN11 SS	2	Price on req.
67	026-271-17	Oil Seal SC-40588 NBR	2	Price on req.
68	140-016-19	Hex.Bolt M5x12 SUS304	4	Price on req.
69	003-219-16	Gland SPHC	2	Price on req.
70	032-423-15	Bush d9.5x18.5l NBR	2	Price on req.
71	121-247-12	Packing d12.3xd18x2t PE	4	Price on req.
72	035-113-18	Oil Plug M12x14 SUS304	4	Price on req.
73	144-584-15	Hex.Socket Cap Screw M12x16 SUS304	8	Price on req.
74	060-491-11	Bearing Housing FC	2	Price on req.
75	122-258-19	O-Ring 395xd5 NBR	2	Price on req.
76	142-166-11	Spring Washer M16 SUS304	8	Price on req.
77	140-518-16	Hex. Socket Cap Bolt M16x170 SUS304 (EN X5CrNi18-10) Stainless Steel	8	Price on req.
78	122-129-10	O-Ring (M.Frame/O.Casing) G-90(89.4xd3.1) NBR	2	Price on req.
79	028-170-11	Seal Housing For LH619/422/622/430-51/61 FC	2	Price on req.
80	142-163-21	Spring Washer M8 SUS316 (DIN 1.4401) Stainless Steel	8	Price on req.
81	140-055-10	Hex.Bolt M8x25 SUS304	8	Price on req.

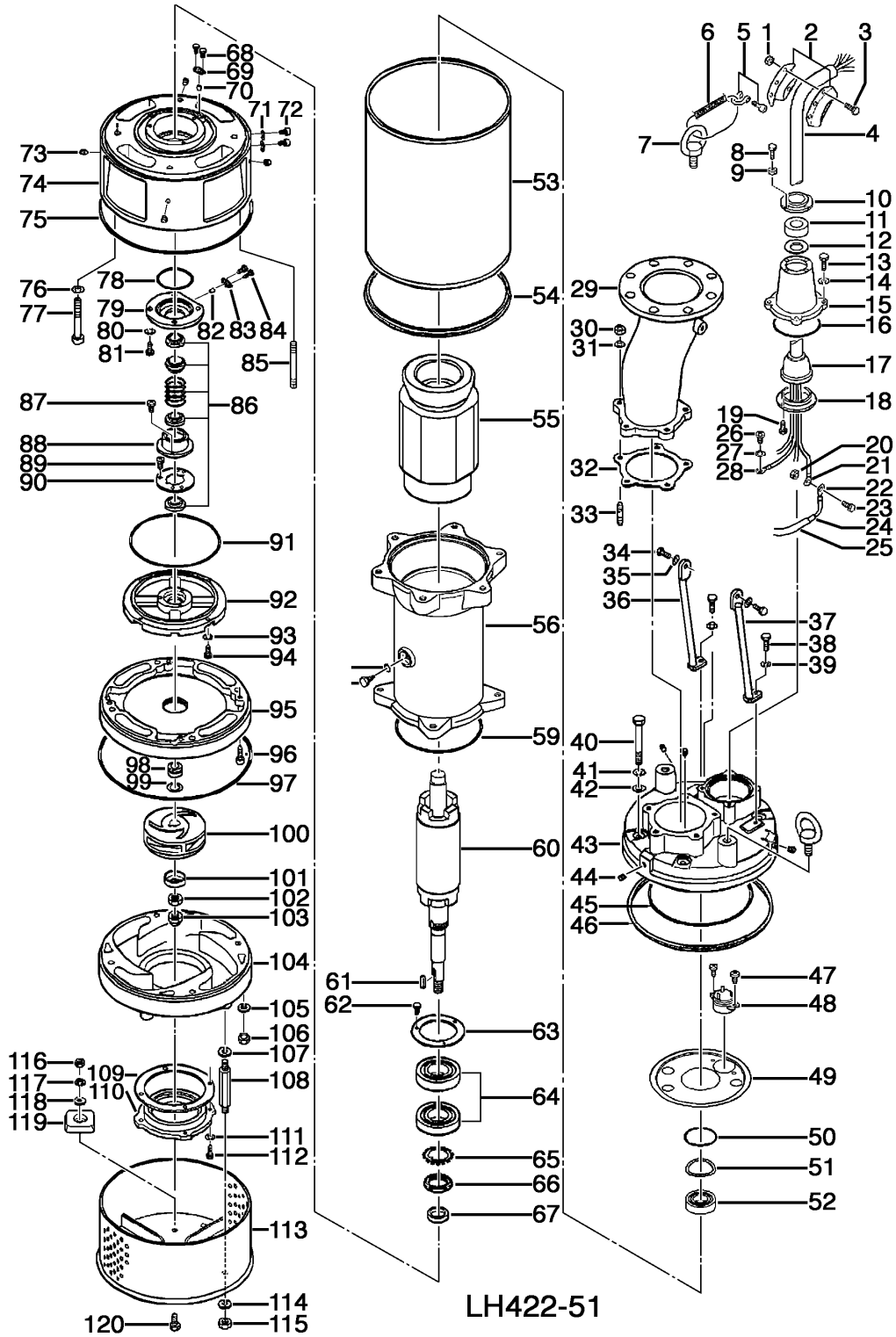
**LH422-51**

Kontroll-Nr. --

2019-02-2C V.01.02.2019

Pos.no	Item no.	Description	Quant.	UP
82	032-423-15	Bush d9.5x18.5L NBR	2	Price on req.
83	003-219-16	Gland SPHC	2	Price on req.
84	140-016-19	Hex.Bolt M5x12 SUS304	4	Price on req.
85	144-444-25	Stud Bolt M16x100(28/24) SUS304 (EN X5CrNi18-10) Stainless Steel	8	Price on req.
86	025-001-03	Mechanical Seal H-35T SiC	2	Price on req.
87	143-070-23	Pan Screw M5x6 SWRM	4	Price on req.
88	030-156-18	Oil Lifter H-35(A)(T) Resin	2	Price on req.
89	143-070-10	Pan Screw M5x6 SWRM	6	Price on req.
90	030-150-12	Seal Stopper H-35(A)(T) SPCC	2	Price on req.
91	122-250-11	O-Ring 230x3.8 NBR	2	Price on req.
92	029-398-10	Oil Casing For LH619/422/622/430-51/61 FC	2	Price on req.
93	142-164-19	Spring Washer M10 SUS304	8	Price on req.
94	140-078-19	Hex.Bolt M10x30 SUS304	8	Price on req.
95	020-000-33	Upper Pump Casing (w/Labyrinth Ring) For LH619/422/622/430-51/61 FCD	2	Price on req.
96	140-289-15	Hex. Socket Cap Bolt M10x40 SUS304 (EN X5CrNi18-10) Stainless Steel	8	Price on req.
97	122-258-19	O-Ring 395x5 NBR	2	Price on req.
98	040-125-19	Impeller Shim d31xd45.2x0.5t SUS304 (EN X5CrNi18-10) Stainless Steel	2	Price on req.
99	071-000-03	Shaft Sleeve For LH619/422/622/430-51/61 SUS403 (EN X6Cr13) Stainless Steel	2	Price on req.
100	021-R15-11	Impeller (50HZ) For LH422-51 CR	2	Price on req.
101	047-106-28	Impeller Thread Protect.Cover No.5(26) SUS304 (EN X5CrNi18-10) Stainless Steel	2	Price on req.
102	141-011-20	Hex.Nut M24(H=14) SUS304 (EN X5CrNi18-10) Stainless Steel	4	Price on req.
103	141-035-17	Hex.Cap Nut M24 SUS304 (EN X5CrNi18-10) Stainless Steel	2	Price on req.
104	020-B74-11	Pump Casing (Lower) For LH422/430-51/61 FCD	2	Price on req.
105	142-166-11	Spring Washer M16 SUS304	8	Price on req.
106	141-008-11	Hex.Nut M16 SUS304 (EN X5CrNi18-10)	8	Price on req.
107	142-165-10	Spring Washer M12 SUS304	8	Price on req.
108	144-573-11	Stud Bolt M12x164(22/22) SUS403 (EN X6Cr13) Stainless Steel	8	Price on req.
109	120-175-15	Packing (S.Cover) LH615/422/430-51/61 PE	2	Price on req.
110	022-000-09	Suction Cover (w/Mouth Ring) LH615/422/430-51/61 FC	2	Price on req.
111	142-164-19	Spring Washer M10 SUS304	8	Price on req.
112	140-075-16	Hex.Bolt M10x25 SUS304	8	Price on req.
113	023-001-29	Strainer Stand For LH422/430-51/61 SS	2	Price on req.
114	142-165-10	Spring Washer M12 SUS304	8	Price on req.
115	141-007-10	Hex.Nut M12 SUS304	8	Price on req.
116	141-007-10	Hex.Nut M12 SUS304	8	Price on req.
117	142-165-10	Spring Washer M12 SUS304	8	Price on req.
118	142-129-12	Plain Washer M12 SUS304	8	Price on req.
119	043-102-19	Cathodic Protection Plate AB-1HS(75x70x20t) Al	8	Price on req.
120	140-096-13	Hex.Bolt M12x25 SUS304	8	Price on req.
	173-000-21	Packing & O-Ring Set	2	Price on req.
	##oilVG32	ml Turbine Oil ISO VG32	13800	Price on req.

# Exploded View LH422-51



LH422-51