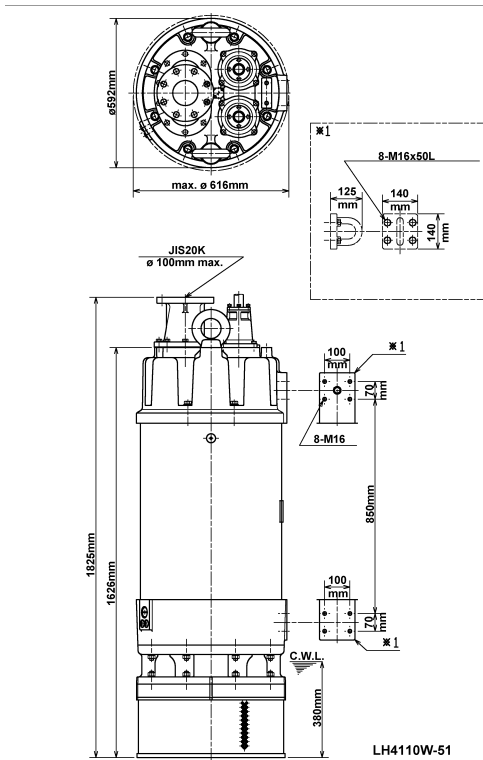
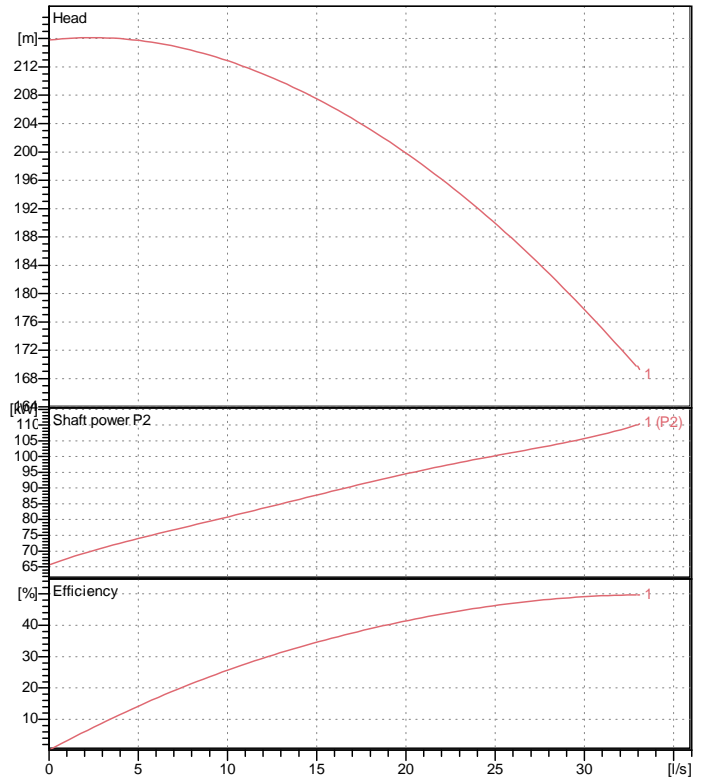


# Data sheet LH4110W-51



CWL: Continuous running water level



## Specification

Electric submersible pump  
 Degree of protection IP 68  
 Depth of submersion max. 30 m  
 Type of impeller Closed  
 Max. solid handling 8 mm  
 Suitable for:  
 rain water, ground water, sand water

## Electric motor

Dry-type submersible induction motor  
 Insulation class F 2Poles 2965 1/min  
 Starting mode Star-delta  
 Rated voltage 400 V 50 Hz 3~  
 Power uptake 128.96 kW  
 Rated power 110.00 kW  
 Rated current 209 A  
 Start current 1366.9 A

## Cable

20m NSSHÖU(3Cx35mm<sup>2</sup>,3x16mm<sup>2</sup>/3E,2x2,5ST);NSSHÖU (3Cx35mm<sup>2</sup>, 3x16mm<sup>2</sup>/3E)

## Motor Protection

Miniature protector in windings  
 (snap-action bi-metal device)

## Shaft seal

Double inside mechanical seal in oil bath  
 additional lubrication by oil lifting device

Primary seal  
 Silicon carbide on silicon carbide  
 Secondary seal  
 Silicon carbide on silicon carbide

## Bearings

Shielded ball bearings, maintenance-free

## Materials

Upper Pump casing	FC200 (EN-GJL-200)
Middle Pump casing	FC200 (EN-GJL-200)
Motor Frame	FC200 (EN-GJL-200)
Shaft	SUS420J2 (EN-X30Cr13)

## Discharge size

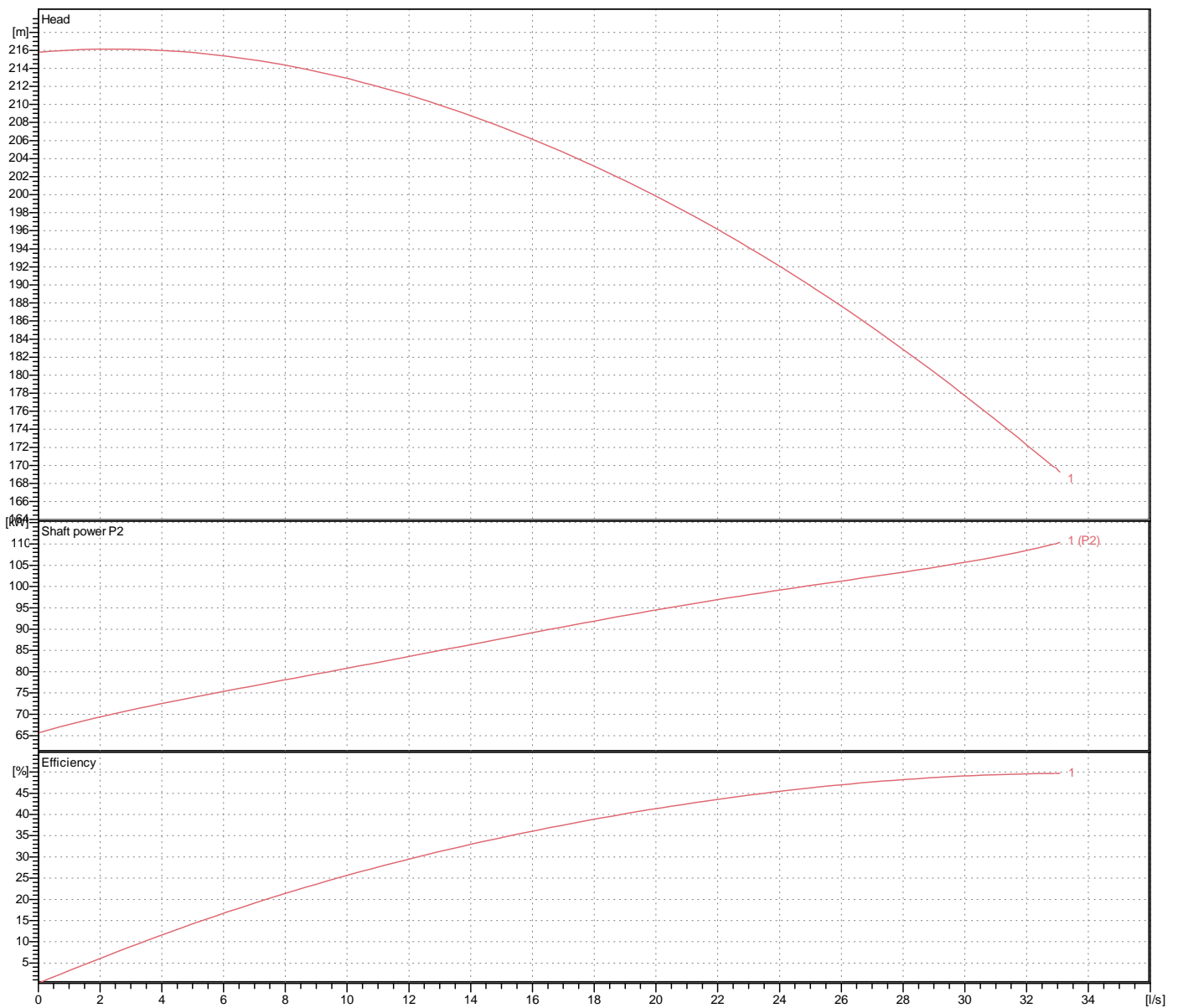
100mm JIS20K flange

## Weight

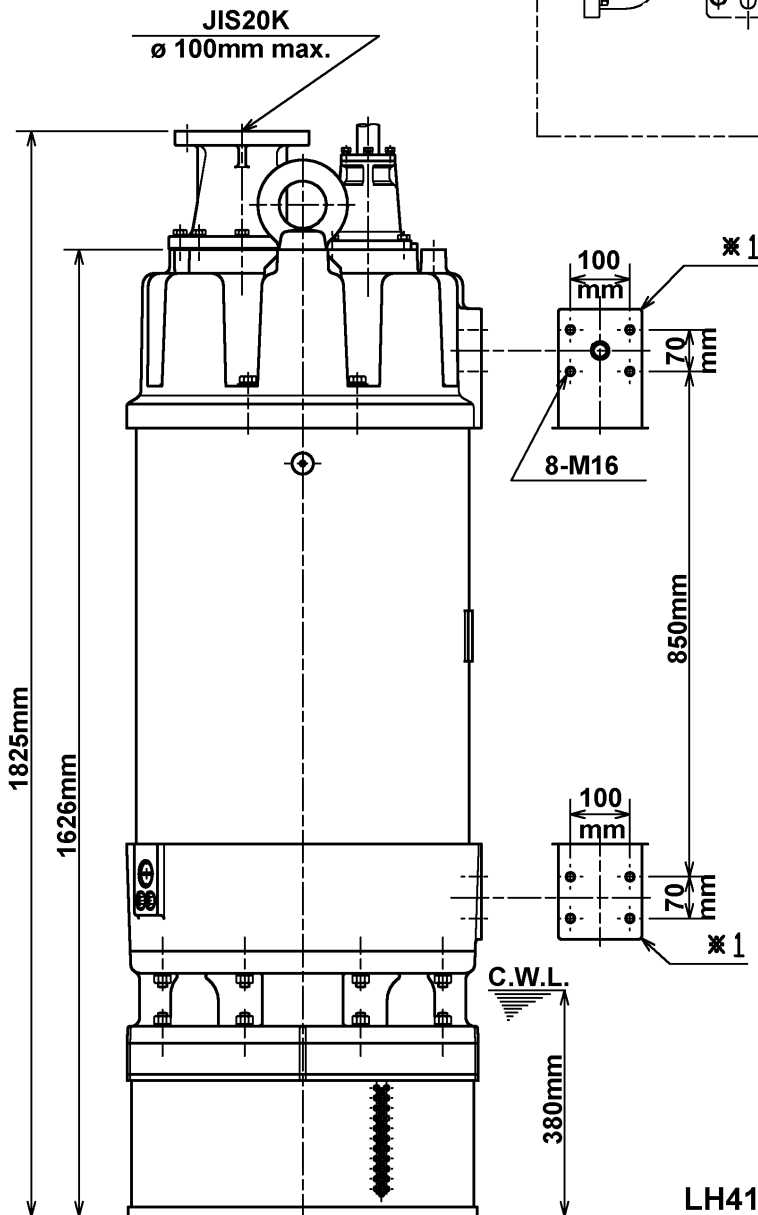
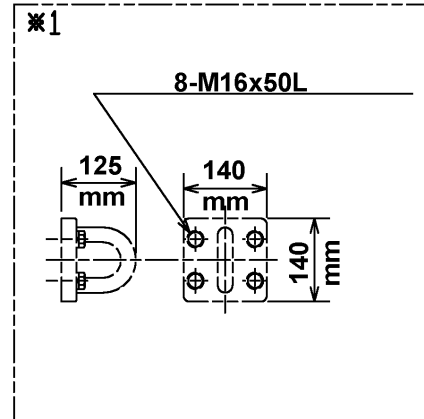
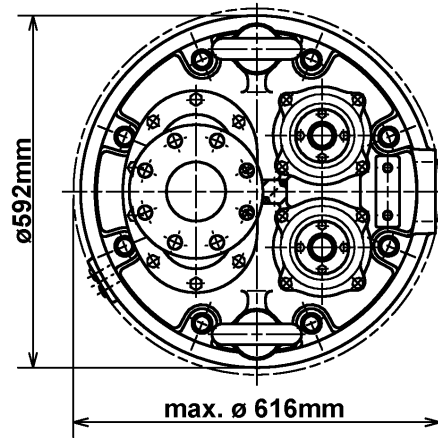
1270 kg (dry weight of the pump only without cable)

# Performance curve LH4110W-51

Discharge port	4"
Head	215.8 m
Flow	32.9 l/s
Rated power	110.00 kW
Power input	128.96 kW
Phases	3~
Voltages	400 V
Frequency	50 Hz
Rated current	209 A
Starting current	1,366.86 A
Number of poles	2
Speed	2965 1/min
Starting mode	Star-delta
Insulation class	F



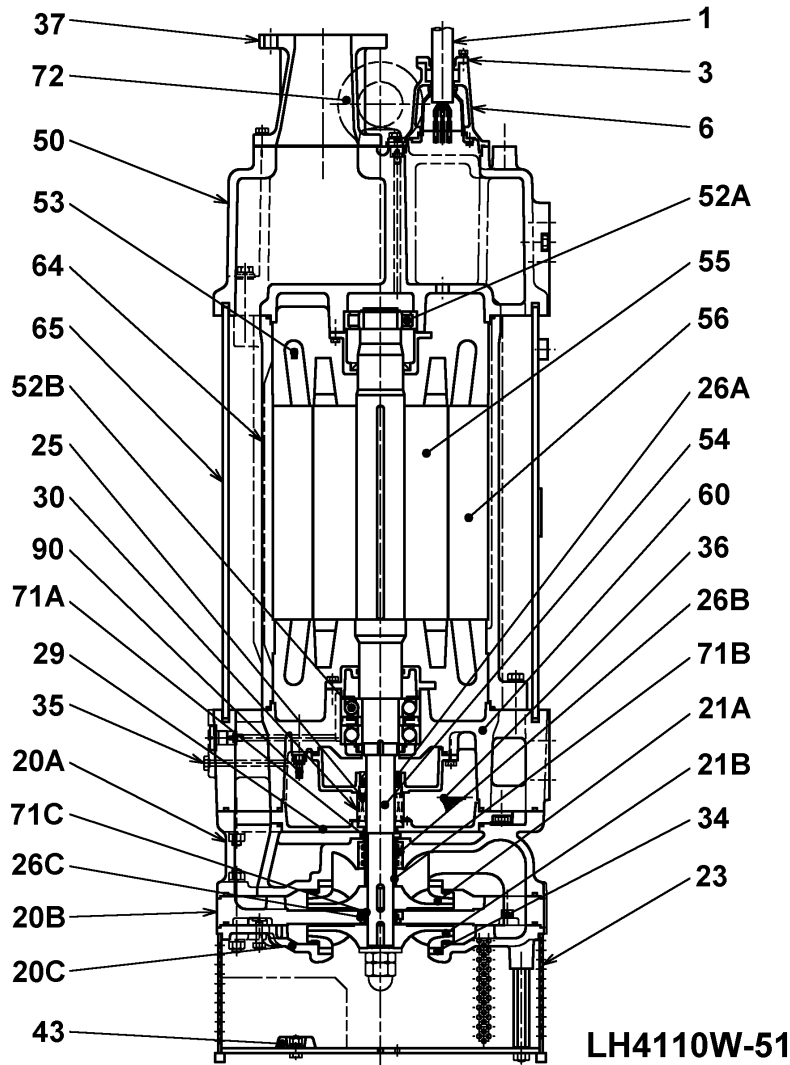
# Dimensions LH4110W-51



LH4110W-51

CWL: Continuous running water level  
LWL: Lowest running water level

# Sectional drawing LH4110W-51



**LH4110W-51**

No.	Description	Remark	No.	Description	Remark
1	Cable	20m NSSHÖU	37	Discharge coupling	FCD700 (EN-GJS-700-2)
3	Gland	FC200 (EN-GJL-200)	43	Sacrificial anode (3x)	Aluminium alloy
6	Stuffing box	FC200 (EN-GJL-200)	50	Motor cover	FC200 (EN-GJL-200)
20A	Upper Pump casing	FC200 (EN-GJL-200)	52A	Upper bearing	NU312
20B	Middle Pump casing	FC200 (EN-GJL-200)	52B	Lower bearing	7313BDB
20C	Lower Pump casing	FC200 (EN-GJL-200)	53	Miniature protector (3x)	.
21A	Upper Impeller	Chromium iron casting	54	Shaft	SUS420J2 (EN-X30Cr13)
21B	Lower Impeller	Chromium iron casting	55	Rotor	.
23	Strainer	Construction steel SS400	56	Stator	.
25	Mechanical seal	H-50T	60	Bearing Housing	FC200 (EN-GJL-200)
26A	Oil seal	SC507212	64	Motor Frame	FC200 (EN-GJL-200)
26B	Upper laby rinth ring	SUS630 (EN-X5CrNiCuNb16-4)	65	Outer Cover	Construction steel SS400
26C	Lower laby rinth ring	SUS630 (EN-X5CrNiCuNb16-4)	71A	Upper shaft protection sleeve	SUS630 (EN-X5CrNiCuNb16-4)
29	Oil casing	FC200 (EN-GJL-200)	71B	Middle shaft protection sleeve	SUS630 (EN-X5CrNiCuNb16-4)
30	Oil distributor	Steel plate	71C	Lower shaft protection sleeve	SUS630 (EN-X5CrNiCuNb16-4)
34	Wear Ring	Chromium iron casting	72	Eye screw	Construction steel SS400
35	Oil screw (2x)	SUS304 (EN-X5CrNi18-10)	90	Density sensor	.
36	Lubricant	Turbine oil (ISO VG32)			