

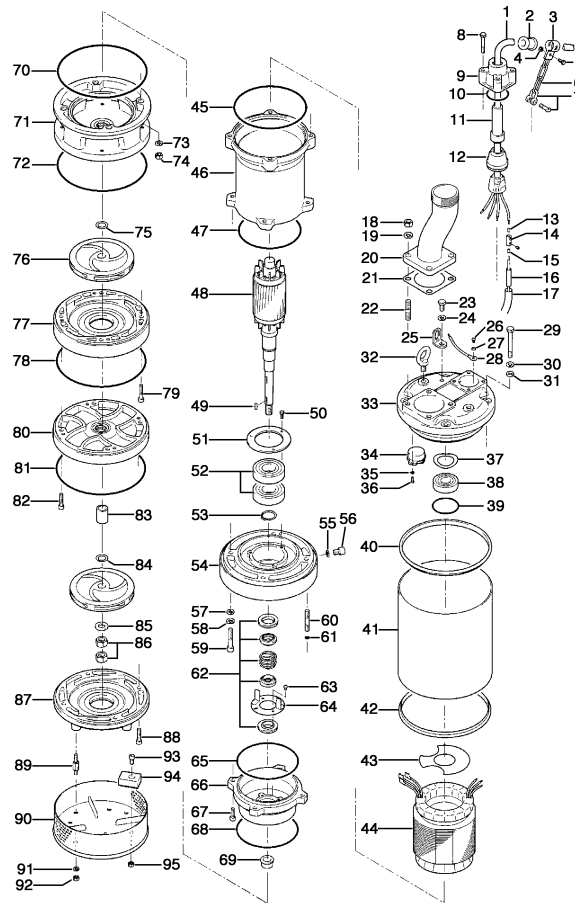
LH25.5W-50

Kontroll-Nr. --

2024-04-11 V.01.02.2023

Pos.no	Item no.	Description	Qty.	UP / EUR
--------	----------	-------------	------	----------

LH25.5W-50


LH25.5W-50

1.1.1	173-470-17	Packing & O-Ring Set	1	
1	001-TEG-02	Cabletyre Cable Set (20m) H07RN-F4Cx2,5mm ² without stuffing box	1	
1	M01-TEG-02	Cabletyre Cable Set (20m) NSSHÖU 4Cx2,5mm ²	1	
2	010-121-19	Cable Clip Rubber (EUR,NSU) No.1 NBR	1	
3	010-120-18	Cable Clip No.2-1 SPC	1	Price on req.
4	141-004-33	Hex.Nut M6 SWRM	1	
5	140-032-37	Hex.Bolt M6x15 SWRM	1	
6	095-000-95	Chain 4mm(4L)L=24 SS	1	
7	011-110-11	Shackle 6mm SS	1	
8	140-060-18	Hex.Bolt M8x50 SUS304	4	
9	006-167-17	Stuffing Box No.1-3 FC	1	
10	122-121-12	O-Ring G-50 NBR	1	
11	004-168-12	Cable Bush No.2 CR	1	
12	008-156-19	Mould Cover No.1-3 ADC	1	
13	009-123-10	Terminal (EUR,NSU) P-5,5 CU	4	
14	009-101-12	Terminal(C/W Screw) d12x(d6.6xd6.6)x25l C3604	4	
15	009-123-10	Terminal (EUR,NSU) P-5,5 CU	4	
16	002-129-15	Heat Shrink Tube (Sold per meter) EVA(d14x1t) (Vm)	1	
17	002-132-11	Heat Shrink Tube (Sold per meter) A4(d17x0.27t) (Vm)	1	
18	141-007-10	Hex.Nut M12 SUS304	4	
19	142-165-10	Spring Washer M12 SUS304 (EN X5CrNi18-10) Stainless Steel	4	Price on req.
20	037-000-28	Flanged Discharge Pipe 50mm (GHZ-25.5W) (SGP+SS)	1	
21	121-413-11	Packing 100mm2(P.C.107) THREE SHEET	1	
22	144-000-46	Stud Bolt M12x64(24/27) SUS304	4	
23	140-075-15	Hex. Bolt M10x20 SUS304 (EN X5CrNi18-10) Stainless Steel	1	Price on req.
24	142-164-19	Spring Washer M10 SUS304	1	
25	070-103-10	L-Shape Fitting KT-55 SPC	1	
26	143-014-16	Pan Screw M4x8 SWRM	1	
27	142-124-46	Plain Washer M4 BSBM	1	
28	009-164-13	Earth Terminal 3.5mm2x190l	1	
29	140-087-11	Hex.Bolt M10x80 SUS304 (EN X5CrNi18-10) Stainless Steel	4	
30	142-164-19	Spring Washer M10 SUS304	4	
31	142-297-12	Seal Washer SM-10 Stainless Steel+NBR	4	
32	072-102-22	Eyebolt M12	2	
33	050-396-27	Motor Bracket FC	1	
34	053-404-15	Motor Protector 525V-50HZ 575V-60HZ KA314-HMXL00 (B.C)	1	
35	142-124-20	Plain Washer M4 SPC	2	
36	143-016-18	Pan Screw M4x12 SWRM	2	
37	142-197-11	Wave Washer #6305 SK-5	1	
38	052-108-13	Bearing 6305ZZC3	1	

LH25.5W-50

Kontroll-Nr. --

2024-04-11 V.01.02.2023

Pos.no	Item no.	Description	Qty.	UP / EUR
39	122-244-12	O-Ring 61.4xd3.1 NBR	1	
40	121-421-12	Packing d218xd229.4x12.5t NBR	1	
41	065-231-16	Outer Cover GHZ-25.5W SS	1	
42	121-421-12	Packing d218xd229.4x12.5t NBR	1	
43	058-151-19	Lead Wire Protection Plate d85xd125x1.5t Bakelite	1	
44	056-001-99	Stator	1	Price on req.
45	122-335-11	O-Ring 177.39xd3.53 NBR	1	
46	064-463-16	Motor Frame FC	1	
47	122-329-12	O-Ring 151.99xd3.53 NBR	1	
48	055-722-18	Rotor	1	
49	147-125-13	Impeller Key 5x5x15l Stainless Steel	2	
50	140-032-37	Hex.Bolt M6x15 SWRM	3	
51	062-206-13	Bearing Fixing Plate d72xd110x4.5t SS	1	
52	052-147-14	Bearing 6307ZZD2C3	1	
53	146-022-16	Retaining Ring C35 SK5	1	
54	060-418-27	Bearing Housing FC	1	
55	121-247-12	Packing d12.3xd18x2t PE	1	
56	035-113-18	Oil Plug M12x14 SUS304 (EN X5CrNi18-10) Stainless Steel	1	Price on req.
57	142-297-12	Seal Washer SM-10 Stainless Steel+NBR	4	
58	142-164-19	Spring Washer M10 SUS304	4	
59	140-292-11	Hex. Socket Cap Bolt M10x55 SUS304 (EN X5CrNi18-10) Stainless Steel	4	
60	144-405-37	Stud Bolt M10x45(20/20) SUS304 (EN X5CrNi18-10) Stainless Steel	4	
61	122-009-13	O-Ring P-10A NBR	4	
62	025-001-21	Mechanical Seal HT-2530N SiC	1	
63, 64	143-070-23	Pan Screw M5x6 SWRM	6	
63, 64	030-139-15	Oil Lifter For HT-2530 Resin	1	
63, 64	030-148-17	Seal Stopper For HT-2530 SPCC	1	
65	122-328-11	O-Ring 150xd3.1 NBR	1	
66	029-000-39	Oil Casing LH25.5W FC	1	
67	140-269-19	Hex. Socket Cap Bolt M8x25 SUS304 (EN X5CrNi18-10) Stainless Steel	4	
68	122-328-11	O-Ring 150xd3.1 NBR	1	
69	071-215-13	Shaft Sleeve (2nd Stage) d20xd28x17.5t SUS403 (EN X6Cr13) Stainless Steel	1	
70	122-311-11	O-Ring 220xd3.5 NBR	1	
71	020-001-20	Pump Casinq (Upper/2nd Stage) GHZ25.5W(w/Labyrinth Ring) FC+Stainless Steel	1	
0	026-254-14	Labyrinth ring only	1	
72	122-311-11	O-Ring 220xd3.5 NBR	1	
73	142-164-19	Spring Washer M10 SUS304	4	
74	141-006-19	Hex.Nut M10 SUS304 (EN X5CrNi18-10)	4	
75	040-106-27	Impeller Shim d20.2xd30x0.3t SUS304 (EN X5CrNi18-10) Stainless Steel	1	
76	021-E27-15	Impeller (50Hz) HiCrFC	2	
77	020-851-19	Pump Casing (Lower/2nd Stage) GHZ-25.5W(w/Mouth Ring) FC+HiCrFC	1	
	034-156-10	Mouth ring only	1	
78	122-311-11	O-Ring 220xd3.5 NBR	1	
79	140-272-15	Hex. Socket Cap Bolt M8x40 SUS304 (EN X5CrNi18-10) Stainless Steel	4	
80	020-852-10	Pump Casing (Upper/1st Stage) GHZ25.5W(w/Labyrinth Ring) FC+Stainless Steel	1	
	026-254-14	Labyrinth ring only	1	
81	122-311-11	O-Ring 220xd3.5 NBR	1	
82	140-271-14	Hex. Socket Cap Bolt M8x35 SUS304 (EN X5CrNi18-10) Stainless Steel	4	
83	071-216-14	Shaft Sleeve (1st Stage) d20xd28x37t SUS403 (EN X6Cr13) Stainless Steel	1	
84	040-106-27	Impeller Shim d20.2xd30x0.3t SUS304 (EN X5CrNi18-10) Stainless Steel	1	
85	142-130-16	Plain Washer M16 SUS304 (EN X5Cr18-10)	1	
86	141-008-11	Hex.Nut M16 SUS304 (EN X5CrNi18-10)	2	
87	020-853-11	Pump Casing (Lower/1st Stage) GHZ-25.5W(w/Mouth Ring) FC+HiCrFC	1	
0	034-156-10	Mouth ring only	1	
88	140-271-14	Hex. Socket Cap Bolt M8x35 SUS304 (EN X5CrNi18-10) Stainless Steel	4	
89	144-000-61	Stud Bolt M8x59(15/22) SUS403 (EN X6Cr13) Stainless Steel	4	
90	023-001-21	Strainer Stand GHZ-25.5W SS	1	
91	142-163-21	Spring Washer M8 SUS316 (DIN 1.4401) Stainless Steel	4	
92	141-005-18	Hex.Nut M8 SUS304 (EN X5CrNi18-10)	4	
93	140-266-16	Hex. Socket Cap Bolt M8x16 SUS304 (EN X5CrNi18-10) Stainless Steel	2	
94	043-000-17	Cathodic Protection Plate (EUR) 50x34x18H AL	2	Price on req.
95	141-005-18	Hex.Nut M8 SUS304 (EN X5CrNi18-10)	2	
	173-470-17	Packing & O-Ring Set	1	
	##oilVG32	ml Turbine Oil ISO VG32	860	Price on req.