

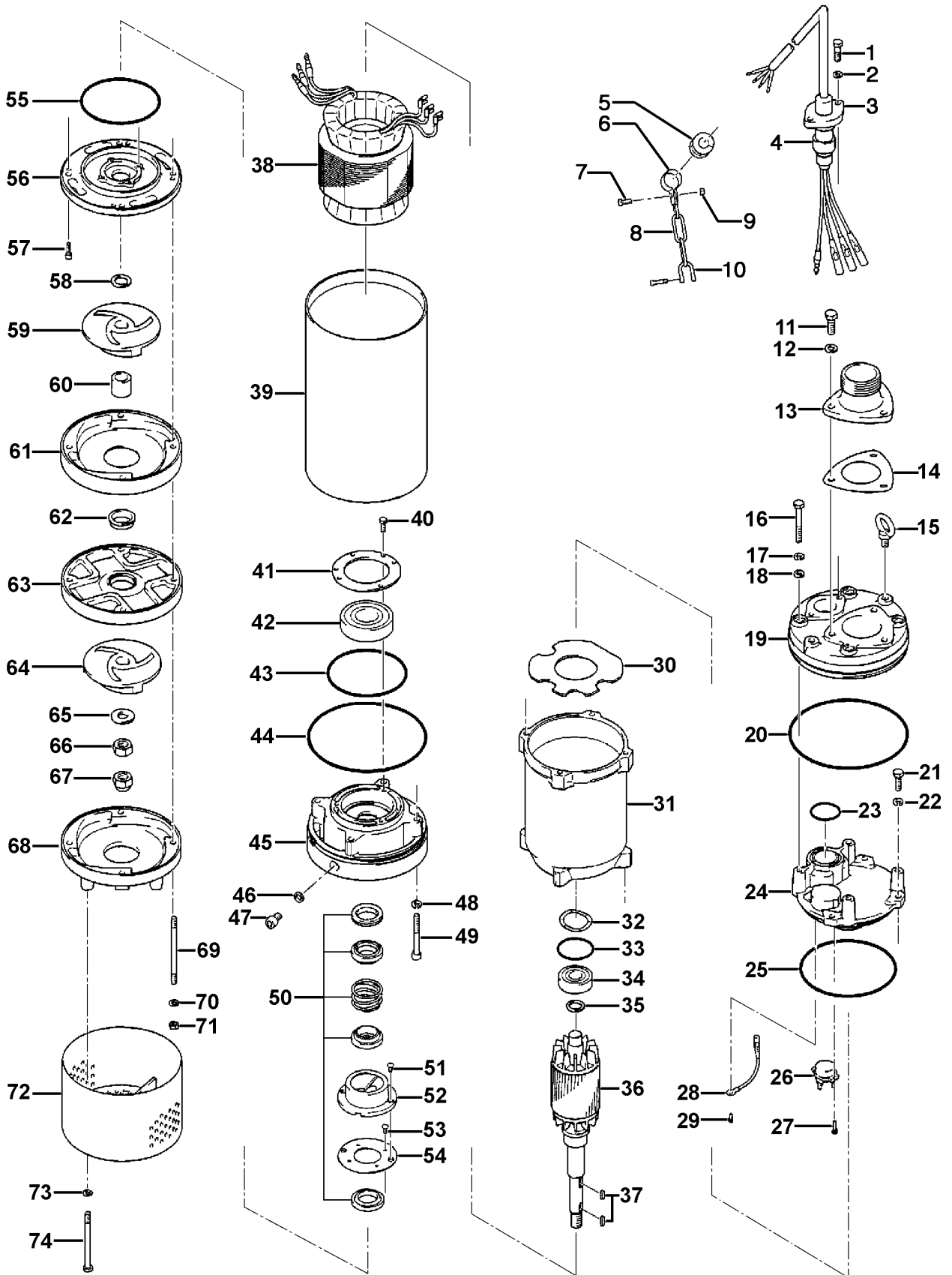
LH23.0W-50

Kontroll-Nr. --

2019-02-2C V.01.02.2019

Pos.no	Item no.	Description	Quant.	UP
		Packing O-Ring Set	1	Price on req.
1	140-057-12	Hex.Bolt M8x30 SUS304 (EN X5CrNi18-10) Stainless Steel	2	Price on req.
2	142-163-21	Spring Washer M8 SUS316 (DIN 1.4401) Stainless Steel	2	Price on req.
3	003-000-06	Gland d26xP.C.60 FC	1	Price on req.
4	001-TEG-33	Cabtyre Cable Set (20m)(HAR) H07RN4Cx1.5mm² with gland	1	Price on req.
4	M01-TEG-33	Cabtyre Cable Set (20m)(HAR) H07RN4Cx1.5mm²	1	Price on req.
	061-TEG-04	Cable Repair Kit	1	Price on req.
5	010-151-11	Cable Clip Rubber 220/230/240V-50Hz(EUR) No.4 NBR	1	Price on req.
6	010-120-18	Cable Clip No.2-1 SPC	1	Price on req.
7	140-032-37	Hex.Bolt M6x15 SWRM	1	Price on req.
8	095-131-18	Chain 4mm(3L) SS	1	Price on req.
9	141-004-59	Hex.Nut M6 SWRM	1	Price on req.
10	011-110-11	Shackle 6mm SS	1	Price on req.
11	140-078-19	Hex.Bolt M10x30 SUS304	3	Price on req.
12	142-164-19	Spring Washer M10 SUS304	3	Price on req.
13	032-000-24	Hose Coupling BSPT-2 FCD	1	Price on req.
14	121-000-32	Packing P.C.98xd60x1t THREESHEET	1	Price on req.
15	072-100-20	Eye Bolt M10 SUS304	2	Price on req.
16	140-064-12	Hex.Bolt M8x70 SUS304 (EN X5CrNi18-10) Stainless Steel	4	Price on req.
17	142-163-21	Spring Washer M8 SUS316 (DIN 1.4401) Stainless Steel	4	Price on req.
18	142-337-15	Seal Washer SM-8 SUS+NBR	4	Price on req.
19	051-000-12	Head Cover FC	1	Price on req.
20	122-431-18	O-Ring 171.04xd3.53 NBR	1	Price on req.
21	140-055-10	Hex.Bolt M8x25 SUS304	4	Price on req.
22	142-163-21	Spring Washer M8 SUS316 (DIN 1.4401) Stainless Steel	4	Price on req.
23	122-119-17	O-Ring G-40 NBR	1	Price on req.
24	050-000-18	Motor Bracket FC	1	Price on req.
25	122-139-13	O-Ring G-140 NBR	1	Price on req.
26	053-477-19	Motor Protector (380/415-50) KA313-GQXL104 (T.C)	1	Price on req.
27	143-126-12	Pan Screw (w/Spring Washer/Plain Washer) M4x12 SWRM	2	Price on req.
28	009-000-37	Intermediate Lead Wire UL-1015.AWG14.L=260.2-4	1	Price on req.
29	143-085-34	Pan Screw (w/Spring Washer) M4x6 C3604 (EN CuZn39Pb3)	1	Price on req.
30	058-000-07	Protection Plate d65.5xd144x2t Bakelite	1	Price on req.
31	064-000-38	Motor Frame FC	1	Price on req.
32	142-196-10	Wave Washer 6205/6304 SK5	1	Price on req.
33	122-367-12	O-Ring 52xd3.1 NBR	1	Price on req.
34	052-107-12	Bearing 6304ZZC3	1	Price on req.
35	061-174-18	Slinger d20xd27x2t SPC	1	Price on req.
36	055-000-59	Rotor Stainless Steel	1	Price on req.
37	147-125-13	Impeller Key 5x5x15l Stainless Steel	2	Price on req.
38	056-001-71	Stator (380/415-50)	1	Price on req.
39	065-000-16	Outer Cover SPCC	1	Price on req.
40	140-030-51	Hex.Bolt M6x12 SWRM	3	Price on req.
41	062-219-19	Bearing Cover d70xd105x2.3t SPCC	1	Price on req.
42	052-110-18	Bearing 6307ZZC3	1	Price on req.
43	122-133-17	O-Ring G-110 NBR	1	Price on req.
44	122-431-18	O-Ring 171.04xd3.53 NBR	1	Price on req.
45	060-000-36	Bearing Housing FC	1	Price on req.
46	121-246-11	Packing (Oil Plug) d10.3xd16x2t PE	1	Price on req.
47	035-124-12	Oil Plug M10x15 SUS304 (EN X5CrNi18-10)	1	Price on req.
48	142-163-21	Spring Washer M8 SUS316 (DIN 1.4401) Stainless Steel	4	Price on req.
49	140-278-11	Hex.Bolt M8x70 SUS304 (EN X5CrNi18-10) Stainless Steel	4	Price on req.
50	025-001-00	Mechanical Seal H-25T SiC	1	Price on req.
51	143-070-23	Pan Screw M5x6 SWRM	2	Price on req.
52	030-143-12	Oil Lifter H-25(A)(T) Resin	1	Price on req.
53	143-070-10	Pan Screw M5x6 SWRM	4	Price on req.
54	030-148-17	Seal Stopper For HT-2530 SPCC	1	Price on req.
55	122-135-19	O-Ring G-120(119.4xd3.1) NBR	1	Price on req.
56	029-000-12	Oil Casing LH23.0W/LH33.0 FCD	1	Price on req.
57	140-252-19	Hex.Socket Cap Bolt M6x20 SUS304 (EN X5CrNi18-10)	4	Price on req.
58	040-106-27	Impeller Shim d20.2xd30x0.3t SUS304 (EN X5CrNi18-10) Stainless Steel	1	Price on req.
59	021-001-44	Impeller (50Hz) LH23.0W-50 (HICRFC)	1	Price on req.
59	021-001-45	Impeller (60Hz) LH23.0W-60 HICRFC	1	Price on req.
60	071-000-10	Shaft Sleeve d20xd30x28L SUS403 (EN X6Cr13) Stainless Steel	1	Price on req.
61	020-000-54	Pump Casing (Lower/2nd Stage) LH23.0W FCD 450	1	Price on req.
62	026-000-05	Labyrinth Ring d31xd41x11t SUS304 (EN X5CrNi18-10) Stainless Steel	1	Price on req.
63	020-000-92	Pump Casing (Upper/1st Stage) LH23.0W w/Labyrinth Ring FCD 450	1	Price on req.
64	021-001-44	Impeller (50Hz) LH23.0W-50 (HICRFC)	1	Price on req.
65	142-130-16	Plain Washer M16 SUS304 (EN X5Cr18-10)	1	Price on req.
66	141-008-40	Hex.Nut M16(t=10) SUS304 (EN X5CrNi18-10) Stainless Steel	1	Price on req.
67	141-033-15	Hex.Cap Nut M16 SUS304 (EN X5Cr18-10)	1	Price on req.
68	020-000-56	Pump Casing (Lower/1st Stage) LH23.0W FCD 450	1	Price on req.
69	144-000-18	Stud Bolt M8x120(16/18) SUS304 (EN X5CrNi18-10) Stainless Steel	4	Price on req.
71	141-005-18	Hex.Nut M8 SUS304 (EN X5CrNi18-10)	4	Price on req.
72	023-000-24	Strainer Stand LH23.0W/LH33.0 SPCC	1	Price on req.
73	142-163-21	Spring Washer M8 SUS316 (DIN 1.4401) Stainless Steel	4	Price on req.
74	140-070-11	Hex.Bolt M8x100 SUS304 (EN X5CrNi18-10) Stainless Steel	4	Price on req.
	173-000-41	Packing & O-Ring Set	1	Price on req.
	##oilVG32	ml Turbine Oil ISO VG32	350	Price on req.

# Exploded View LH23.0W-50



LH23.0W-50