

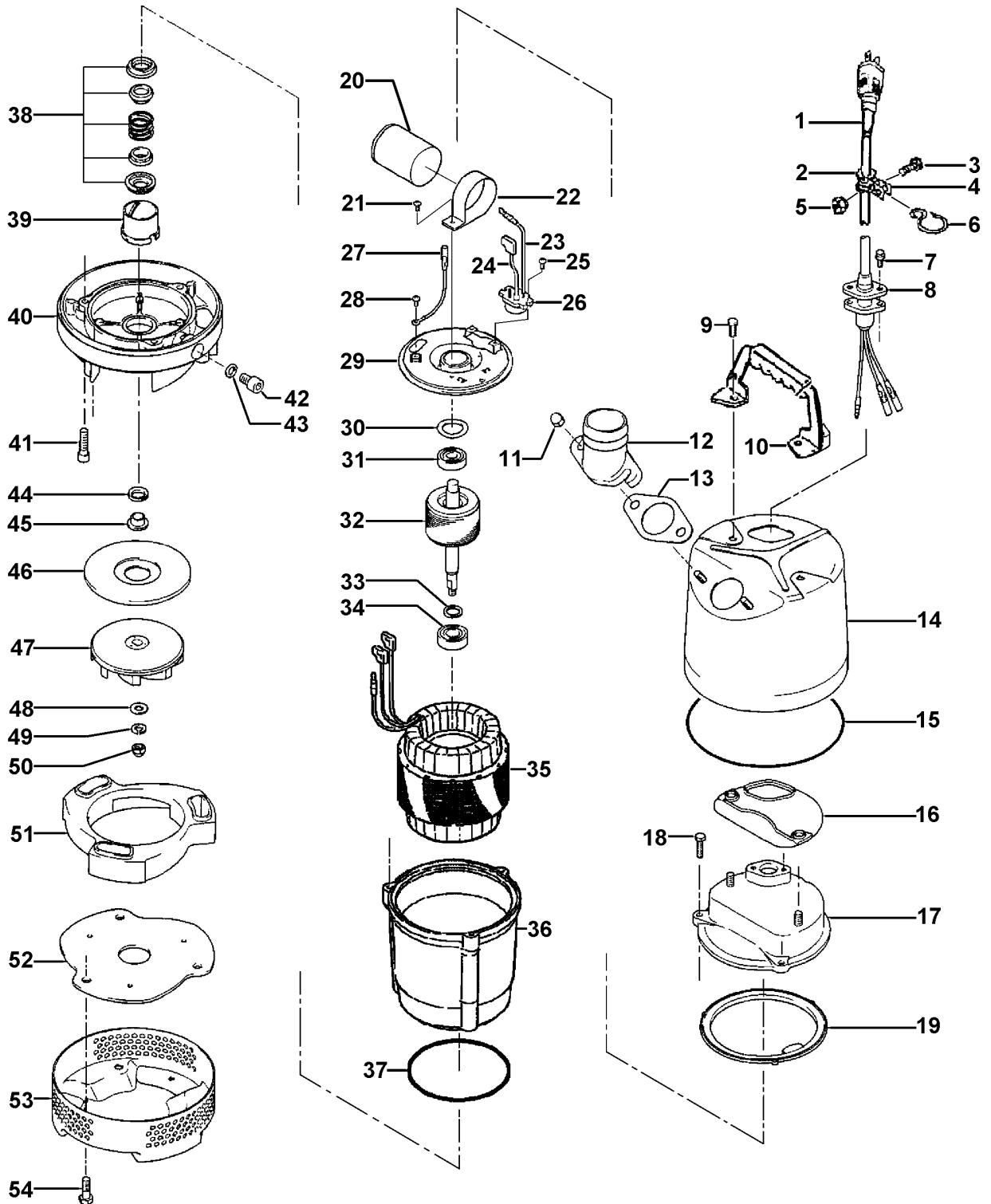
**LB-800-52**

Kontroll-Nr. --

2019-01-24 V.20 / 1.11.2017

Pos.no	Item no.	Description	Quant.	UP
		Dichtungs-Oring-Satz	1	Price on req.
1	001-009-48	Cableyre Cable Set (10m) 220/230/240V-50Hz(EUR) H07R-F3Cx1mm2 LBD(HAR)	1	Price on req.
	061-TEG-05	Cable Repair Kit	1	Price on req.
2	010-162-15	Cable Clip Rubber 220/230/240V-50Hz(EUR) LB2-400 NBR	1	Price on req.
2	010-126-17	Cable Clip Rubber HS2 NBR	1	Price on req.
3	140-015-21	Hex.Bolt M5x10 SWRM	1	Price on req.
4	010-105-10	Cable Clip SB SPC	1	Price on req.
5	141-003-58	Hex.Nut M5 SWRM	1	Price on req.
6	011-100-18	Shackle S-8 SS	1	Price on req.
7	140-427-17	Hex.Bolt (w/Plain Washer) M5x15 SUS304 (EN X5CrNi18-10)	2	Price on req.
8	003-190-10	Gland SUS316 (EN X5Cr-Ni-Mo17-12-2)	1	Price on req.
9	140-503-18	Hex.Bolt (w/Plain Washer) M8x16 SUS304 (X5CrNi18-10) Stainless Steel	2	Price on req.
10	068-289-18	Handle LBA3-250/480 (SPC+NBR)	1	Price on req.
11	141-144-10	Flanged Hex. Nut M8 SUS304 (EN X5CrNi18-10) Stainless Steel	2	Price on req.
12	032-000-23	Hose Coupling (for EUR) BSPT-2, LB-480 ADC	1	Price on req.
	181-001-18	Hose Band 55mm(d50) SUP	1	Price on req.
13	121-587-17	Packing LB-250/480-51/61 NBR	1	Price on req.
14	065-000-22	Outer Cover SPC	1	Price on req.
15	122-453-16	O-Ring 172x2,7 NBR	1	Price on req.
16	121-434-18	Packing LB3-250/480 Synthetic Rubber	1	Price on req.
17	051-000-55	Head Cover ADC	1	Price on req.
18	140-396-16	Hex.Bolt (w/Plain Washer) M6x20 SUS304 (EN X5CrNi18-10) Stainless Steel	3	Price on req.
19	121-546-14	Packing d120xd142x6,2t NBR	1	Price on req.
20	076-000-49	Capacitor 220/230/240V-50Hz(EUR) 15MF-450VAC(f45x70L)	1	Price on req.
21	143-085-21	Pan Screw (w/Spring Washer) M4x6 SWRM	1	Price on req.
21	143-086-22	Pan Screw (w/Spring Washer) M4x8 SWRM	1	Price on req.
22	127-000-96	Capacitor Fixing Plate 220/230/240V-50Hz d45 SPC	1	Price on req.
22	127-001-00	Capacitor Fixing Plate 220/230/240V-50Hz d45(1.0t) SPC	1	Price on req.
23	009-001-03	Intermediate Lead Wire AWG16x160(red)	1	Price on req.
24	009-001-42	Intermediate Lead Wire AWG16x80(Indigo)	1	Price on req.
25	143-000-43	Truss Screw M4x8 SWRM	2	Price on req.
26	053-002-04	Motor Protector 220/230/240V-50Hz(EUR) KA142-LYTL01F (T.C)	1	Price on req.
27	009-001-02	Earth Terminal UL1015-AWG18,G/Y,L=160	1	Price on req.
28	143-203-14	Pan Screw M4x5	1	Price on req.
29	142-000-41	Wave Washer #6201(T=0.4) (S65CM)	1	Price on req.
30	050-000-61	Motor Bracket SECD	1	Price on req.
31	052-100-15	Bearing 6201ZZC3	1	Price on req.
32	055-002-98	Rotor w/Bearing	1	Price on req.
33	061-180-17	Bearing Collar d15.1xd20x1.6t SS	1	Price on req.
34	052-152-12	Bearing 6302ZZC3	1	Price on req.
35	056-008-27	Stator 220/230/240V-50Hz(EUR)	1	Price on req.
36	064-001-27	Motor.Frame ADC	1	Price on req.
37	122-133-17	O-Ring G-110 NBR	1	Price on req.
38	025-000-81	Mechanical Seal W-14VCA SIC	1	Price on req.
39	030-000-09	Oil Lifter W-14VL Resin	1	Price on req.
40	029-000-72	Oil Casing LB-750-51/61 ADC	1	Price on req.
41	140-252-19	Hex.Socket Cap Bolt M6x20 SUS304 (EN X5CrNi18-10)	3	Price on req.
42	035-124-12	Oil Plug M10x15 SUS304 (EN X5CrNi18-10)	1	Price on req.
43	121-246-11	Packing (Oil Plug) d10.3xd16x2t PE	1	Price on req.
44	122-441-11	V-Ring VR-14 NBR	1	Price on req.
45	071-292-14	Shaft Sleeve LB3-250/480 SUS304 (EN X5CrNi18-10) Stainless Steel	1	Price on req.
46	031-000-12	Wear Ring LSC1.4S-51/61 SPC+Urethane Rubber	1	Price on req.
47	021-007-52	Impeller (50HZ) 50Hz Urethane Rubber	1	Price on req.
48	142-127-10	Plain Washer M8 SUS304 (EN X5CrNi18-10) Stainless Steel	1	Price on req.
49	142-163-18	Spring Washer M8 SUS304	1	Price on req.
50	141-030-12	Hex.Cap Nut M8 SUS304 (EN X5CrNi18-10) Stainless Steel	1	Price on req.
51	020-000-43	Pump Casing LB-750 BR+NR	1	Price on req.
52	022-001-27	Suction Cover LB-750 SPC	1	Price on req.
53	023-547-18	Strainer Stand LB-250/480-51/61 SPC	1	Price on req.
54	140-000-14	Hex.Bolt (w/Plain Washer) M8x20 SUS304 (EN X5CrNi18-10) Stainless Steel	3	Price on req.
	173-567-12	Packing & O-Ring Set	1	Price on req.
	##oilVG32	ml Turbine Oil ISO VG32	155	Price on req.

# Exploded View LB-800-52



**LB-800-52**