

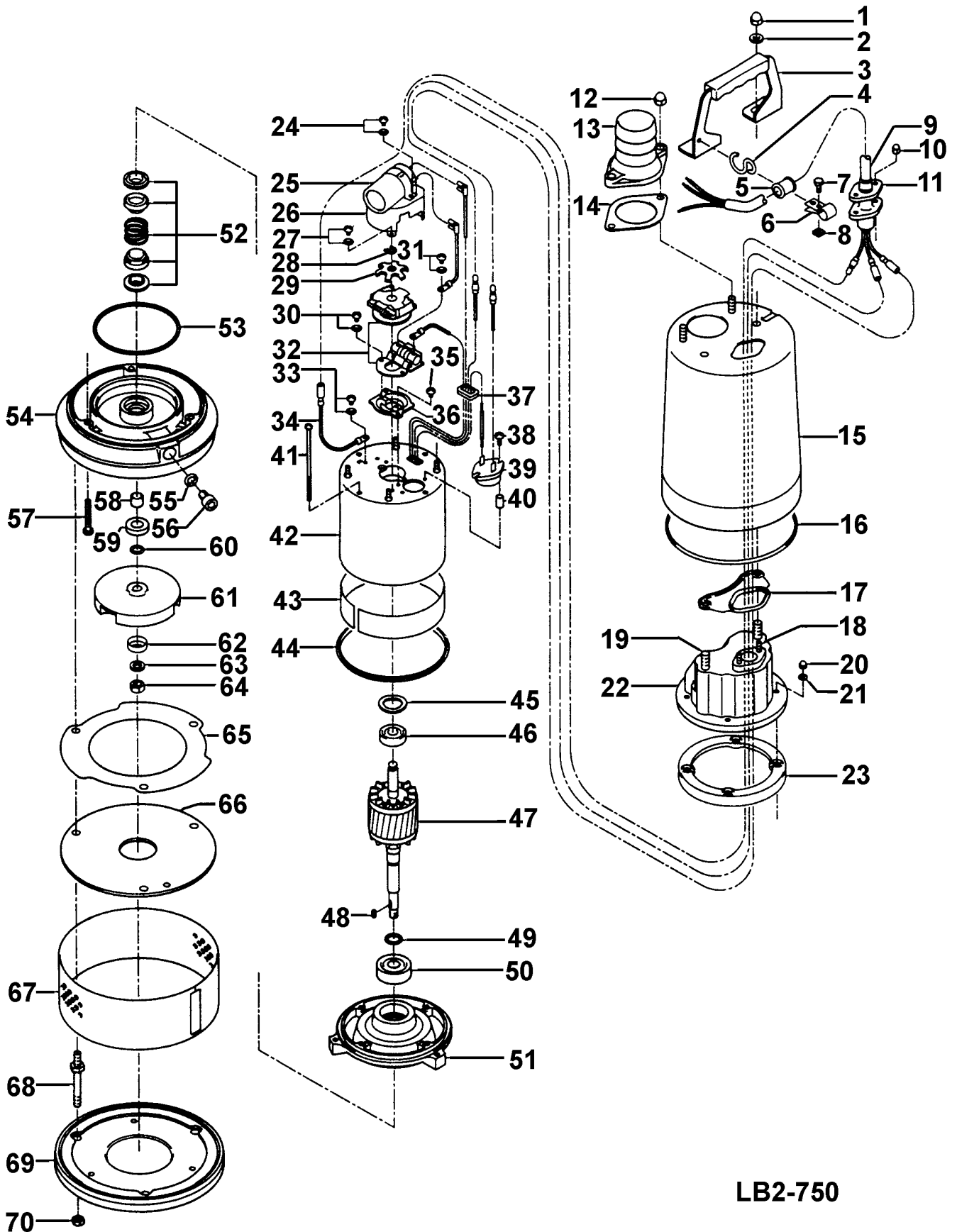
LB2-750

Kontroll-Nr. --

2019-01-24 V.20 / 1.11.2017

Pos.no	Item no.	Description	Quant.	UP
		Dichtungs-Oring-Satz	1	Price on req.
1	141-030-38	Hex.Cap Nut M8(B=12) SUS304 (EN X5CrNi18-10) Stainless Steel	2	Price on req.
2	142-127-23	Plain Washer M8 SPC	2	Price on req.
3	068-239-26	Handle LBA3-250/480 SPC+NBR	1	Price on req.
4	011-100-18	Shackle S-8 SS	1	Price on req.
5	010-126-17	Cable Clip Rubber HS2 NBR	1	Price on req.
5-1	010-145-12	Spacer 35x25x2l (NBR)	1	Price on req.
6	010-105-10	Cable Clip SB SPC	1	Price on req.
7	140-018-37	Hex.Bolt M5x15 SWRM	1	Price on req.
8	141-026-15	Square Nut M5 S20C	1	Price on req.
9	001-009-48	Cabletyre Cable Set (10m) 220/230/240V-50HZ(EUR) H07R-F3Cx1mm2 LBD(HAR)	1	Price on req.
10	140-427-17	Hex.Bolt (w/Plain Washer) M5x15 SUS304 (EN X5CrNi18-10)	2	Price on req.
11	003-190-10	Gland SUS316 (EN X5Cr-Ni-Mo17-12-2)	1	Price on req.
12	141-030-38	Hex.Cap Nut M8(B=12) SUS304 (EN X5CrNi18-10) Stainless Steel	2	Price on req.
13	032-000-67	Hose Coupling 50mm(LB2-480) ADC	1	Price on req.
14	121-138-19	Packing (Screwed Flange) LB(P.C.84) NBR	1	Price on req.
15	065-233-18	Outer Cover LB2-480(Blue) SPC	1	Price on req.
16	122-274-11	O-Ring 159.5xd2.5 NBR	1	Price on req.
17	121-444-24	Packing LB2-750 NBR	1	Price on req.
18	144-469-13	Stud Bolt M5x22 SUS304 (EN X5CrNi18-10) Stainless Steel	2	Price on req.
19	144-308-26	Stud Bolt M8x25 SUS304 (EN X5CrNi18-10) Stainless Steel	2	Price on req.
20	141-028-17	Hex.Cap Nut M5 SUS304 (EN X5CrNi18-10) Stainless Steel	4	Price on req.
21	141-125-18	Plain Washer M5 SUS304 (EN X5CrNi18-10) Stainless Steel	4	Price on req.
22	051-000-07	Head Cover (ADC)	1	Price on req.
23	121-249-14	Packing LB-400(E) NBR	1	Price on req.
24	143-085-34	Pan Screw (w/Spring Washer) M4x6 C3604 (EN CuZn39Pb3)	1	Price on req.
25	076-138-16	Capacitor 110/220V-60HZ 170MFD-125VAC(L=61)	1	Price on req.
26	078-102-17	Centrifugal Switch Cover LB-400(E) SPC	1	Price on req.
27	143-085-34	Pan Screw (w/Spring Washer) M4x6 C3604 (EN CuZn39Pb3)	2	Price on req.
28	145-002-17	Snap Retainer d10 SK5	1	Price on req.
29	142-207-15	Finger Spring d10.5 SK5	1	Price on req.
30	143-085-34	Pan Screw (w/Spring Washer) M4x6 C3604 (EN CuZn39Pb3)	2	Price on req.
31	143-076-29	Pan Screw (w/Spring Washer) M3x6 SWRM	2	Price on req.
32	077-109-11	Centrifugal Switch MS-3-2	1	Price on req.
33	143-085-34	Pan Screw (w/Spring Washer) M4x6 C3604 (EN CuZn39Pb3)	1	Price on req.
34	009-207-19	Earth Terminal AWG16x175I(CEE)	1	Price on req.
35	143-085-34	Pan Screw (w/Spring Washer) M4x6 C3604 (EN CuZn39Pb3)	2	Price on req.
36	062-185-15	Bearing Fixing Plate LB SECC	1	Price on req.
37	016-110-16	Lead Wire Protection Bush LB-400(E) NBR	1	Price on req.
38	143-114-17	Truss Screw M4x16 SWRM	2	Price on req.
39	053-393-10	Motor Protector 220V-50HZ MEA-98123 (H.C)	1	Price on req.
40	071-174-19	Spacer d6x6lx0.5t SPC	2	Price on req.
41	143-119-12	Pan Screw M5x127 SWRM	4	Price on req.
42	056-763-14	Stator and Frame	1	Price on req.
43	071-206-11	Collar 29I SECC	1	Price on req.
44	121-244-19	Packing LB-400(E) NBR	1	Price on req.
45	142-192-16	Wave Washer 6201(D=32,t=0.4) SK5	1	Price on req.
46	052-100-15	Bearing 6201ZZC3	1	Price on req.
47	055-619-11	Rotor w/Bearing	1	Price on req.
48	147-016-10	Impeller Key 4x4x10L SUS403 (EN X6Cr13)	1	Price on req.
49	061-157-15	Bearing Collar d15.1xd21x1.6t Kaltgewalztes BlechC	1	Price on req.
50	052-152-12	Bearing 6302ZZC3	1	Price on req.
51	060-372-15	Bearing Housing FC	1	Price on req.
52	025-000-80	Mechanical Seal W-14HC SSIC	1	Price on req.
53	122-131-15	O-Ring G-100 NBR	1	Price on req.
54	020-802-15	Pump Casing LB2-750 FC	1	Price on req.
55	121-246-11	Packing (Oil Plug) d10.3xd16x2t PE	1	Price on req.
56	035-124-12	Oil Plug M10x15 SUS304 (EN X5CrNi18-10)	1	Price on req.
57	140-259-16	Hex. Socket Cap Bolt M6x50 SUS304 (EN X5CrNi18-10) Stainless Steel	3	Price on req.
58	071-112-19	Shaft Sleeve d11xd14.8x11f SUS430 (EN X6Cr17)	1	Price on req.
59	026-100-14	Oil Seal SC-15287 NBR	1	Price on req.
60	040-100-18	Impeller Adjusting Washer 11,2x17x0,3t SUS304 (EN X5CrNi18-10) Stainless Steel	1	Price on req.
61	021-E17-12	Impeller (50HZ) 50Hz FCD	1	Price on req.
61	021-E16-11	Impeller (60HZ) 60Hz FCD	1	Price on req.
62	047-108-20	Impeller Thread Protect.Cover No.1(d10.5) SUS304 (EN X5CrNi18-10) Stainless Steel	1	Price on req.
63	142-164-19	Spring Washer M10 SUS304	1	Price on req.
64	141-006-77	Hex.Nut M10 S45C	1	Price on req.
65	120-158-12	Packing (S.Cover) d120xd190x0.6t THREE SHEET	1	Price on req.
66	022-661-16	Suction Cover LB2-750 SPC	1	Price on req.
67	023-410-11	Strainer LB2-750 SPC	1	Price on req.
68	144-104-17	Stud Bolt M8x78(15/18) SUS403 (EN X6Cr13) Stainless Steel	3	Price on req.
69	049-169-12	Bottom Plate LB2-750 SPC	1	Price on req.
70	141-005-34	Hex.Nut M8 S35C	3	Price on req.
	173-455-16	Packing & O-Ring Set	1	Price on req.
	##oilVG32	ml Turbine Oil ISO VG32	210	Price on req.

Exploded View LB2-750



LB2-750