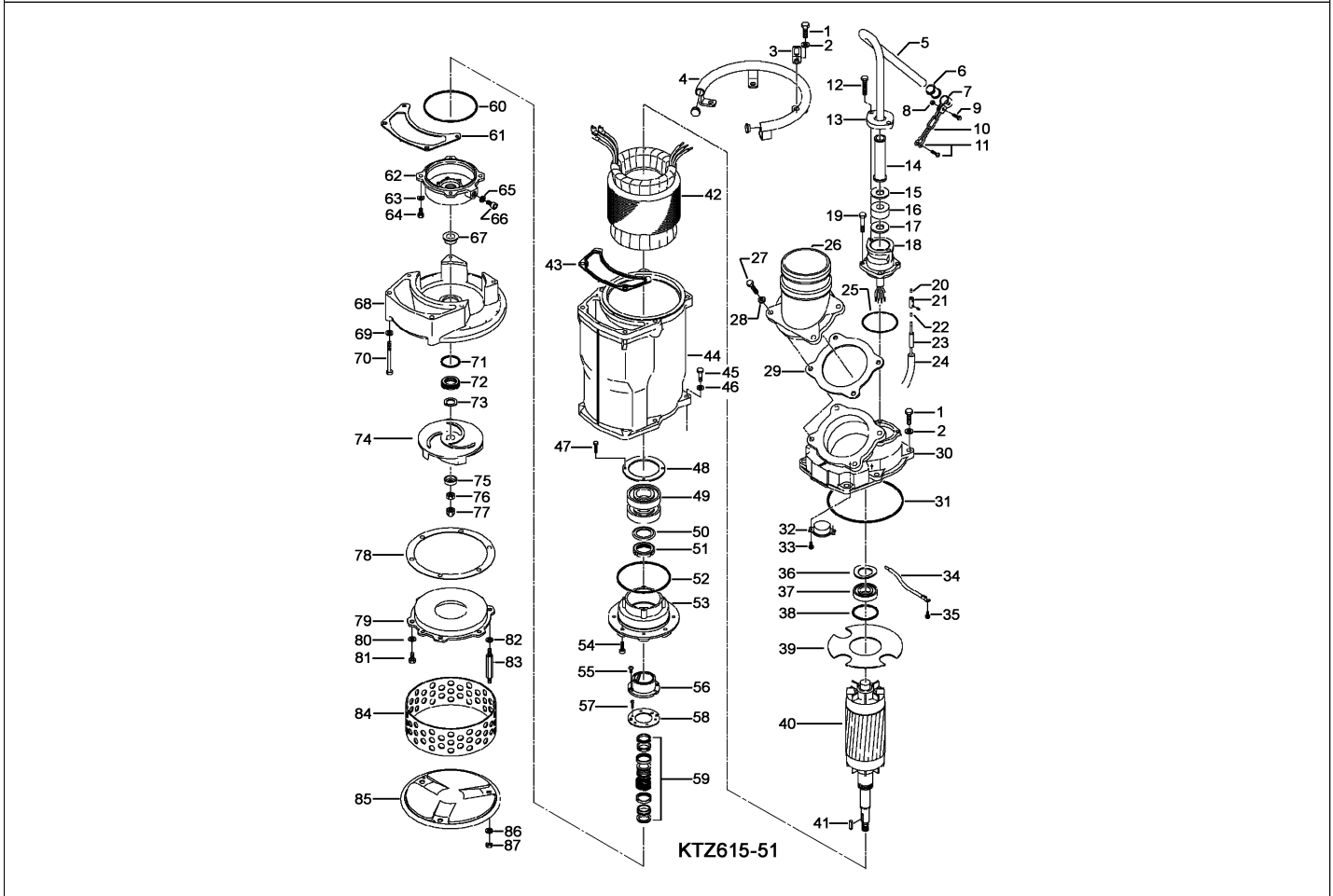


**KTZ615-51**

Kontroll-Nr. --

2022-03-08 V.01.02.2022

Pos.no	Item no.	Description	Qty.	UP / EUR
--------	----------	-------------	------	----------



1.1.1	173-000-86	Packing O-Ring Set	1	125,88
1	140-101-12	Hex.Bolt M12x50 SUS304 (EN X5CrNi18-10) Stainless Steel	6	7,51
2	142-165-10	Spring Washer M12 SUS304	6	1,33
3	070-117-11	L-Shape Fitting 40x25x4.5t d13Hole SPC	1	11,69
4	068-000-32	Handle SGP+SS	1	Price on req.
5	M01-TEG-23	Cabletyre Cable Set (20m) NSSHÖU 4Cx6mm <sup>2</sup>	1	1.250,98
6	010-121-19	Cable Clip Rubber (EUR,NSU) No.1 NBR	1	2,79
7	010-120-18	Cable Clip No.2-1 SPC	1	11,10
8	141-004-59	Hex.Nut M6 SWRM	1	0,51
9	140-032-37	Hex.Bolt M6x15 SWRM	1	0,56
10	095-000-95	Chain 4mm(4L)L=24 SS	1	3,06
11	011-101-19	Shackle 6mm SS	1	6,39
12	140-076-17	Hex.Bolt M10x30 SUS304	2	4,46
13	003-183-23	Gland GHZ-311W FC	1	173,36
14	002-104-14	Cable Protection Tube 400/415V-50Hz(EUR) No.4 NBR	1	8,04
15	005-122-17	Bush Washer 380V-50Hz d23xd53.5x3.2t SPC	1	6,96
16	004-135-10	Cable Bush 400/415V-50Hz(EUR) d21xd54x25l SBR	1	45,00
17	005-122-17	Bush Washer 380V-50Hz d23xd53.5x3.2t SPC	1	6,96
18	006-160-10	Stuffing Box GHZ-311W FC	1	300,04
19	140-055-10	Hex.Bolt M8x25 SUS304	4	2,11
20	009-129-16	Terminal E (Small) CU	4	0,94
21	009-101-12	Terminal(C/W Screw) d12x(d6.6xd6.6)x25l C3604	4	11,10
22	009-129-16	Terminal E (Small) CU	4	0,94
23	002-135-14	Heat Shrink Tube (Sold per meter) A(d15x0.3t) (1/m)	1	6,97
24	002-132-11	Heat Shrink Tube (Sold per meter) A4(d17x0.27t) (1/m)	1	33,62
25	122-128-19	O-Ring G-85(84.4xd3.1) NBR	1	3,90
26	032-001-02	Hose Coupling (for EUR,NSU) KTZ611-53(Angle,BSPT-6) FC	1	477,86
27	140-099-16	Hex.Bolt M12x40 SUS304	4	6,67
28	142-129-25	Plain Washer M12 SPC	4	0,61
29	121-001-49	Packing (Hose Coupling) KTZ-11(Angle) NBR	1	Price on req.
30	050-001-13	Motor Bracket FC	1	2.395,37
31	122-173-19	O-Ring V-225 NBR	1	20,00
32	053-002-22	Motor Protector 220/230/240V-50Hz(EUR) 1 KA143-CCTL402 (H.C)	1	235,48
33	143-125-24	Pan Screw (w/Spring Washer/Plain Washer) M4x14 SWRM	2	1,24
34	009-296-15	Earth Terminal 8mm2x180L	1	34,44
35	143-164-25	Pan Screw (w/Spring Washer) M6x8 BSBM	1	1,19
36	142-198-12	Wave Washer 6306 SK5	1	6,12
37	052-109-14	Bearing 6306ZZC3	1	46,12
38	122-245-13	O-Ring 71.4xd3.1 NBR	1	7,22
39	058-000-36	Lead Wire Protection Plate d96xd224.5x1.6t PE	1	54,30

**KTZ615-51**

Kontroll-Nr. --

2022-03-08 V.01.02.2022

Pos.no	Item no.	Description	Qty.	UP / EUR
40	055-003-45	Rotor + Bearing + Centrifugal Switch Set 1Set No.40,45,46,47,49,50	1	Price on req.
41	147-139-10	Impeller Key 7x7x28L SUS420 (EN X20Cr13) Stainless Steel	1	24,79
42	056-009-62	Stator 400V-50Hz	1	Price on req.
43	121-504-10	Packing (Water Way, Upp.) KTZ411/611 NBR	1	25,83
44	064-001-44	Motor Frame FC	1	Price on req.
45	140-080-14	Hex.Bolt M10x45 SUS304 (EN X5CrNi18-10)	4	4,99
46	142-164-19	Spring Washer M10 SUS304	4	0,89
47	140-032-37	Hex.Bolt M6x15 SWRM	4	0,56
48	062-000-34	Bearing Collar MJA6135Z-C 15KW-2P SS	1	Price on req.
49	052-140-17	Bearing 6309ZZD2C3	1	361,17
50	142-242-12	Bearing Washer AW09 SPCC	1	12,77
51	141-074-18	Bearing Nut AN09 SS	1	42,22
52	122-285-15	O-Ring 155xd3.1 NBR	1	9,74
53	060-001-93	Bearing Housing FC	1	14.446,60
54	140-269-19	Hex. Socket Cap Bolt M8x25 SUS304 (EN X5CrNi18-10) Stainless Steel	4	4,47
55	143-070-23	Pan Screw M5x6 SWRM	2	0,37
56	030-142-11	Oil Lifter H-30(A)(T) Resin	1	8,89
57	143-070-10	Pan Screw M5x6 SWRM	6	0,37
58	030-147-16	Seal Stopper HT-3035 SPCC	1	10,82
59	025-000-73	Mechanical Seal H-30T(T) SIC	1	749,81
60	122-285-15	O-Ring 155xd3.1 NBR	1	9,74
61	121-503-19	Packing (Water Way, Low.) KTZ411/611 NBR	1	31,69
62	029-333-17	Oil Casing KTZ47.5/611 FC	1	170,34
63	142-163-18	Spring Washer M8 SUS304	4	0,51
64	140-055-10	Hex.Bolt M8x25 SUS304	4	2,11
65	121-247-12	Packing d12.3xd18x2t PE	1	1,04
66	035-113-18	Oil Plug M12x14 SUS304	1	8,33
67	071-198-19	Shaft Sleeve d25xd35x17l SUS403 (EN X6Cr13) Stainless Steel	1	115,62
68	020-001-06	Pump Casing KTZ411/611 (FC)	1	1.178,36
69	142-164-19	Spring Washer M10 SUS304	2	0,89
70	140-449-15	Hex.Bolt M10x140 SUS304 (EN X5CrNi18-10) Stainless Steel	2	23,63
71	122-360-15	O-Ring 46.5xd2.5 NBR	1	3,07
72	026-238-12	Labyrinth Ring GHV/GHZ-7.5/11KW SUS304 (EN X5CrNi18-10) Stainless Steel	1	148,12
73	040-107-28	Impeller Shim d25.2xd38x0.3t SUS304	1	3,61
74	021-009-91	Impeller (50Hz) KTZ622-51 HiCrFC	1	467,08
75	047-105-14	Impeller Thread Protect.Cover No.4(22) SPC	1	7,79
76	141-009-38	Hex.Nut M20(H=12) SUS304	1	18,33
77	141-034-16	Hex.Cap Nut M20 SUS304	1	29,44
78	120-111-13	Packing (S.Cover) d221xd268x0.3t PE	1	8,62
79	022-000-57	Suction Cover KTZ67.5/611 (FCD)	1	227,36
80	142-128-24	Plain Washer M10 Kaltgewalztes Blech	3	0,51
81	140-075-16	Hex.Bolt M10x25 SUS304	3	3,90
82	142-128-24	Plain Washer M10 Kaltgewalztes Blech	3	0,51
83	144-000-57	Stud Bolt M10x124(14/26) SUS403 (EN X6Cr13) Stainless Steel	3	23,33
84	023-252-13	Strainer KTV-75/110 SPC	1	48,91
85	049-133-20	Bottom Plate KRS-C3/A3 SPC	1	89,43
86	142-128-24	Plain Washer M10 Kaltgewalztes Blech	3	0,51
87	141-006-19	Hex.Nut M10 SUS304 (EN X5CrNi18-10)	3	2,44
	173-000-86	Packing O-Ring Set	1	125,88
	##oilVG32	ml Turbine Oil ISO VG32	820	Price on req.