

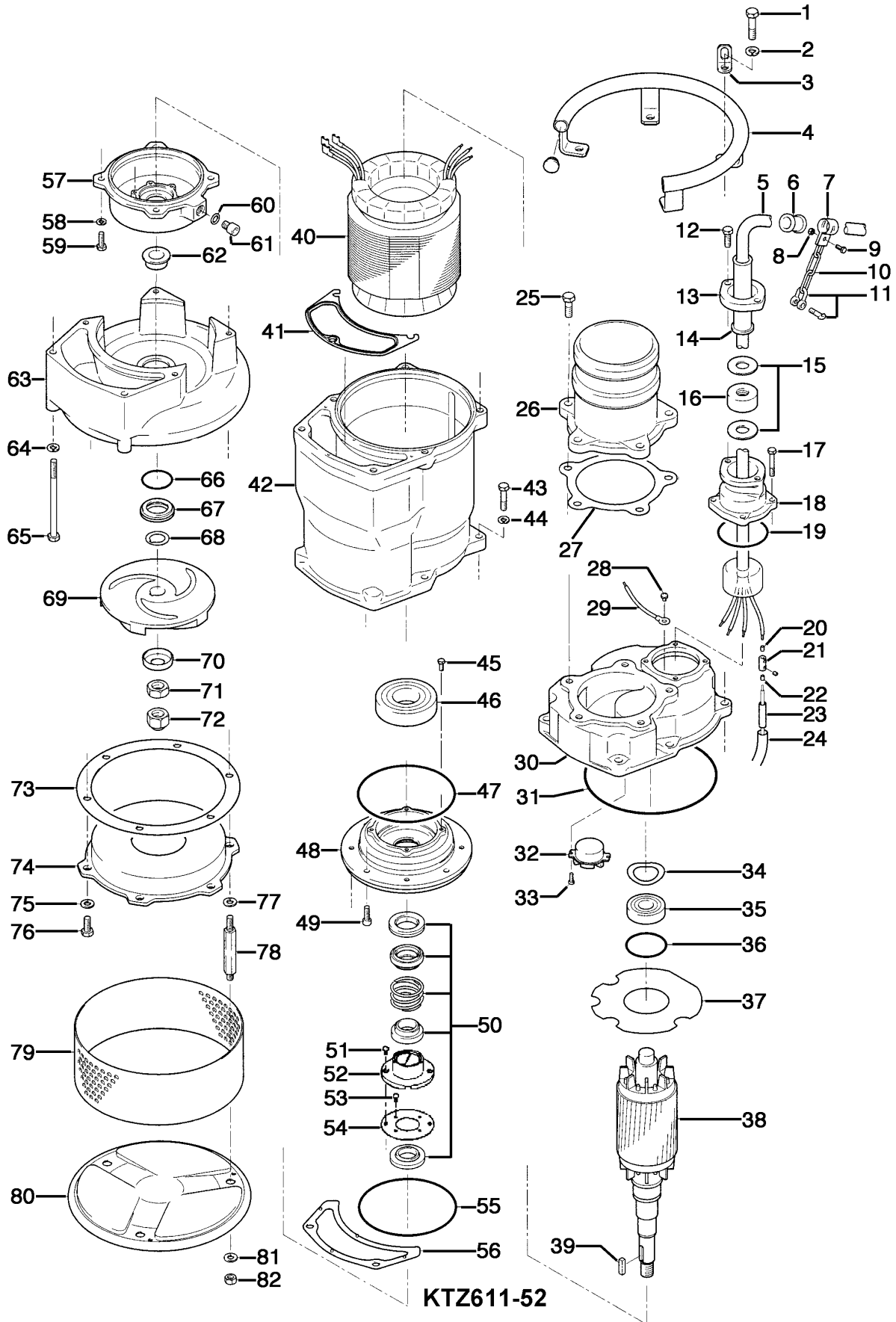
KTZ611-52

Kontroll-Nr. --

2019-01-28 V.20 / 1.11.2017

| Pos.no | Item no. | Description | Quant. | UP |
|--------|------------|---|--------|---------------|
| | | Dichtungs-Oring-Satz | 1 | Price on req. |
| 1 | 140-101-12 | Hex.Bolt M12x50 SUS304 (EN X5CrNi18-10) Stainless Steel | 6 | Price on req. |
| 2 | 142-165-10 | Spring Washer M12 SUS304 | 6 | Price on req. |
| 3 | 070-117-11 | L-Shape Fitting 40x25x4.5t d13Hole SPC | 1 | Price on req. |
| 4 | 068-000-32 | Handle SGP+SS | 1 | Price on req. |
| 5 | 001-TEG-04 | Cabtyre Cable Set (20m) H07RN-F4Cx4mm ² with stuffing box | 1 | Price on req. |
| 5 | M01-TEG-04 | Cabtyre Cable Set (20m) NSSHOU 4Cx4mm ² | 1 | Price on req. |
| 6 | 010-122-10 | Cable Clip Rubber No.2 NBR | 1 | Price on req. |
| 7 | 010-120-18 | Cable Clip No.2-1 SPC | 1 | Price on req. |
| 8 | 141-004-33 | Hex.Nut M6 SWRM | 1 | Price on req. |
| 9 | 140-032-37 | Hex.Bolt M6x15 SWRM | 1 | Price on req. |
| 10 | 095-131-18 | Chain 4mm(3L) SS | 1 | Price on req. |
| 11 | 011-110-11 | Shackle 6mm SS | 1 | Price on req. |
| 12 | 140-078-19 | Hex.Bolt M10x30 SUS304 | 2 | Price on req. |
| 13 | 003-183-23 | Gland GHZ-311W FC | 1 | Price on req. |
| 14 | 002-104-14 | Cable Protection Tube 400/415V-50Hz(EUR) No.4 NBR | 1 | Price on req. |
| 15 | 005-122-17 | Bush Washer 380V-50Hz d23xd53.5x3.2t SPC | 2 | Price on req. |
| 16 | 004-000-01 | Cable Bush 400/415V-50Hz(EUR,NSU) d18xd54x26 NBR | 1 | Price on req. |
| 17 | 140-055-10 | Hex.Bolt M8x25 SUS304 | 4 | Price on req. |
| 18 | 006-160-10 | Stuffing Box GHZ-311W FC | 1 | Price on req. |
| 19 | 122-128-19 | O-Ring G-85(84.4xd3.1) NBR | 1 | Price on req. |
| 20 | 009-129-16 | Terminal E (Small) CU | 4 | Price on req. |
| 21 | 009-101-12 | Terminal(C/W Screw) d12x(d6.6xd6.6)x25l C3604 | 4 | Price on req. |
| 22 | 009-129-16 | Terminal E (Small) CU | 4 | Price on req. |
| 23 | 002-135-14 | Heat Shrink Tube (Sold per meter) A(d15x0.3t) (V/m) | 1 | Price on req. |
| 24 | 002-132-11 | Heat Shrink Tube (Sold per meter) A4(d17x0.27t) (V/m) | 1 | Price on req. |
| 25 | 140-099-16 | Hex.Bolt M12x40 SUS304 | 5 | Price on req. |
| 26 | 032-296-17 | Hose Coupling 150mm(GHV-7.5/11KW) FC | 1 | Price on req. |
| 26 | 032-000-26 | BS-Coupling 150mm (FC) | 1 | Price on req. |
| 27 | 121-374-19 | Packing d140xd172x1t THREE SHEET | 1 | Price on req. |
| 28 | 143-164-25 | Pan Screw (w/Spring Washer) M6x8 BSBM | 1 | Price on req. |
| 29 | 009-296-15 | Earth Terminal 8mm2x180L | 1 | Price on req. |
| 30 | 050-000-04 | Motor Bracket FC | 1 | Price on req. |
| 31 | 122-173-19 | O-Ring V-225 NBR | 1 | Price on req. |
| 32 | 053-000-24 | Motor Protector 380-420V-50HZ 380-460V-60HZ KA315-JKZL00 (B.C) | 1 | Price on req. |
| 33 | 143-125-24 | Pan Screw (w/Spring Washer/Plain Washer) M4x14 SWRM | 2 | Price on req. |
| 34 | 142-198-12 | Wave Washer 6306 SK5 | 1 | Price on req. |
| 35 | 052-109-14 | Bearing 6306ZCC3 | 1 | Price on req. |
| 36 | 122-245-13 | O-Ring 71.4xd3.1 NBR | 1 | Price on req. |
| 37 | 058-000-03 | Lead Wire Protection Plate d96xd224.5x1.5t Bakelite | 1 | Price on req. |
| 38 | 055-002-61 | Rotor | 1 | Price on req. |
| 39 | 147-139-10 | Impeller Key 7x7x28L SUS420 (EN X20Cr13) Stainless Steel | 1 | Price on req. |
| 40 | 056-007-37 | Stator 380/400/415V-50Hz | 1 | Price on req. |
| 41 | 121-504-10 | Packing (Water Way, Upp.) KTZ411/611 NBR | 1 | Price on req. |
| 42 | 064-000-04 | Motor Frame FC | 1 | Price on req. |
| 43 | 140-080-14 | Hex.Bolt M10x45 SUS304 (EN X5CrNi18-10) | 4 | Price on req. |
| 44 | 142-164-19 | Spring Washer M10 SUS304 | 4 | Price on req. |
| 45 | 140-000-06 | Hex.Bolt (w/Spring Washer/Plain Washer) M6x12 SWCH | 4 | Price on req. |
| 46 | 052-112-10 | Bearing 6309ZCC3 | 1 | Price on req. |
| 47 | 122-285-15 | O-Ring 155xd3.1 NBR | 1 | Price on req. |
| 48 | 060-001-39 | Bearing Housing FC | 1 | Price on req. |
| 49 | 140-269-19 | Hex. Socket Cap Bolt M8x25 SUS304 (EN X5CrNi18-10) Stainless Steel | 4 | Price on req. |
| 50 | 025-001-02 | Mechanical Seal H-30T(T) SIC | 1 | Price on req. |
| 51 | 143-070-23 | Pan Screw M5x6 SWRM | 2 | Price on req. |
| 52 | 030-142-11 | Oil Lifter H-30(A)(T) Resin | 1 | Price on req. |
| 53 | 143-070-10 | Pan Screw M5x6 SWRM | 6 | Price on req. |
| 54 | 030-147-16 | Seal Stopper HT-3035 SPCC | 1 | Price on req. |
| 55 | 122-285-15 | O-Ring 155xd3.1 NBR | 1 | Price on req. |
| 56 | 121-503-19 | Packing (Water Way, Low.) KTZ411/611 NBR | 1 | Price on req. |
| 57 | 029-333-17 | Oil Casing KTZ47.5/611 FC | 1 | Price on req. |
| 58 | 142-163-18 | Spring Washer M8 SUS304 | 4 | Price on req. |
| 59 | 140-055-10 | Hex.Bolt M8x25 SUS304 | 4 | Price on req. |
| 60 | 121-247-12 | Packing d12.3xd18x2t PE | 1 | Price on req. |
| 61 | 035-113-18 | Oil Plug M12x14 SUS304 | 1 | Price on req. |
| 62 | 071-198-19 | Shaft Sleeve d25xd35x17l SUS403 (EN X6Cr13) Stainless Steel | 1 | Price on req. |
| 63 | 020-C03-10 | Pump Casing (for EUR)KTZ411/611 FC | 1 | Price on req. |
| 64 | 142-164-19 | Spring Washer M10 SUS304 | 2 | Price on req. |
| 65 | 140-449-15 | Hex.Bolt M10x140 SUS304 (EN X5CrNi18-10) Stainless Steel | 2 | Price on req. |
| 66 | 122-360-15 | O-Ring 46.5xd2.5 NBR | 1 | Price on req. |
| 67 | 026-238-12 | Labyrinth Ring GHV/GHZ-7.5/11KW SUS304 (EN X5CrNi18-10) Stainless Steel | 1 | Price on req. |
| 68 | 040-107-28 | Impeller Shim d25.2xd38x0.3t SUS304 | 1 | Price on req. |
| 69 | 021-K84-15 | Impeller (50Hz) 50Hz HiCrFC | 1 | Price on req. |
| 70 | 047-105-14 | Impeller Thread Protect.Cover No.4(22) SPC | 1 | Price on req. |
| 71 | 141-009-38 | Hex.Nut M20(H=12) SUS304 | 1 | Price on req. |
| 72 | 141-034-16 | Hex.Cap Nut M20 SUS304 | 1 | Price on req. |
| 73 | 120-111-13 | Packing (S.Cover) d221xd268x0.3t PE | 1 | Price on req. |
| 74 | 022-000-57 | Suction Cover KTZ67.5/611 (FCD) | 1 | Price on req. |
| 75 | 142-128-11 | Plain Washer M10 Kaltgewalztes Blech | 3 | Price on req. |
| 76 | 140-075-16 | Hex.Bolt M10x25 SUS304 | 3 | Price on req. |
| 77 | 142-128-11 | Plain Washer M10 Kaltgewalztes Blech | 3 | Price on req. |
| 78 | 144-000-57 | Stud Bolt M10x124(14/26) SUS403 (EN X6Cr13) Stainless Steel | 3 | Price on req. |
| 79 | 023-252-13 | Strainer KTV-75/110 SPC | 1 | Price on req. |
| 80 | 049-133-20 | Bottom Plate KRS-C3/A3 SPC | 1 | Price on req. |

Exploded View KTZ611-52



KTZ611-52