

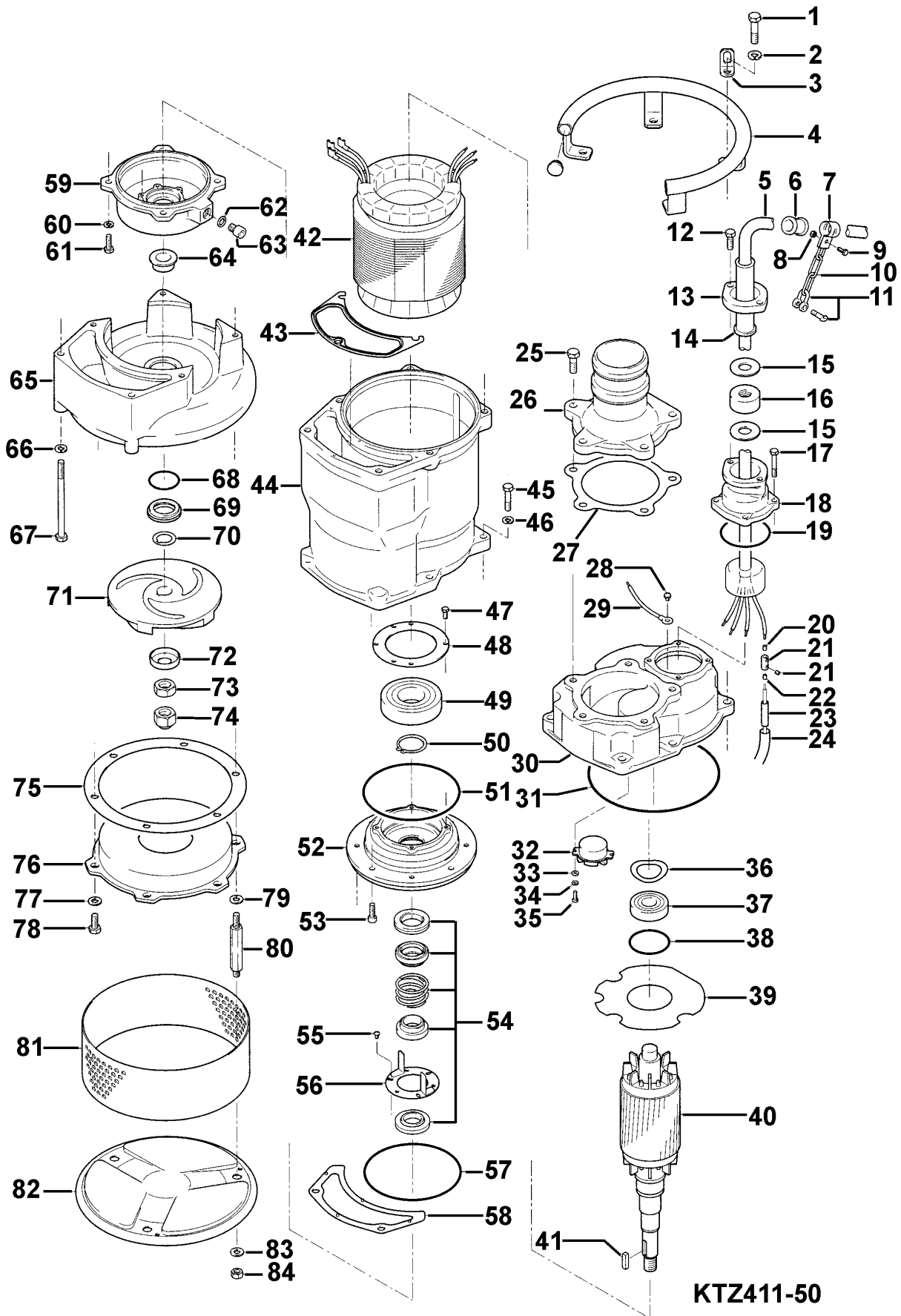
KTZ411-50

Kontroll-Nr. --

2019-01-28 V.20 / 1.11.2017

Pos.no	Item no.	Description	Quant.	UP
		Dichtungs-Oring-Satz	1	Price on req.
1	140-101-12	Hex.Bolt M12x50 SUS304 (EN X5CrNi18-10) Stainless Steel	6	Price on req.
2	142-165-10	Spring Washer M12 SUS304	6	Price on req.
3	070-117-11	L-Shape Fitting 40x25x4.5t d13Hole SPC	1	Price on req.
4	068-264-17	Handle KTZ411/611 SGP+SS	1	Price on req.
5	001-TEG-04	Cabletyre Cable Set (20m) H07RN-F4Cx4mm ² with stuffing box	1	Price on req.
5	M01-TEG-04	Cabletyre Cable Set (20m) NSSHOÜ 4Cx4mm ²	1	Price on req.
6	010-122-10	Cable Clip Rubber No.2 NBR	1	Price on req.
7	010-120-18	Cable Clip No.2-1 SPC	1	Price on req.
8	141-004-33	Hex.Nut M6 SWRM	1	Price on req.
9	140-032-37	Hex.Bolt M6x15 SWRM	1	Price on req.
10	095-131-18	Chain 4mm(3L) SS	1	Price on req.
11	011-110-11	Shackle 6mm SS	1	Price on req.
12	140-078-19	Hex.Bolt M10x30 SUS304	2	Price on req.
13	003-183-23	Gland GHZ-311W FC	1	Price on req.
14	002-103-26	Cable Protection Tube 380V-50Hz No.3 NR	1	Price on req.
15	005-122-17	Bush Washer 380V-50Hz d23xd53.5x3.2t SPC	2	Price on req.
16	004-129-11	Cable Bush 380V-50Hz d22.5xd54x25l NBR	1	Price on req.
17	140-055-10	Hex.Bolt M8x25 SUS304	4	Price on req.
18	006-160-10	Stuffing Box GHZ-311W FC	1	Price on req.
19	122-128-19	O-Ring G-85(84.4xd3.1) NBR	1	Price on req.
20	009-123-10	Terminal (EUR,NSU) P-5.5 CU	4	Price on req.
21	009-101-12	Terminal(C/W Screw) d12x(d6.6xd6.6)x25l C3604	4	Price on req.
22	009-125-12	Terminal E (Small) CU	4	Price on req.
23	002-129-15	Heat Shrink Tube (Sold per meter) EVA(d14x1t) (Vm)	1	Price on req.
24	002-132-11	Heat Shrink Tube (Sold per meter) A4(d17x0.27t) (Vm)	1	Price on req.
25	140-099-16	Hex.Bolt M12x40 SUS304	5	Price on req.
26	032-295-16	Hose Coupling 100mm(GHV-7.5/11KW) FC	1	Price on req.
26	032-438-13	Hose Coupling (for EUR)KTV(BSPT-4) FC	1	Price on req.
27	121-374-19	Packing d140xd172x1t THREE SHEET	1	Price on req.
28	143-164-25	Pan Screw (w/Spring Washer) M6x8 BSBM	1	Price on req.
29	009-215-10	Earth Terminal 8mm2x160l	1	Price on req.
30	050-417-12	Motor Bracket FC	1	Price on req.
31	122-250-11	O-Ring 230xd3.8 NBR	1	Price on req.
32	053-492-10	Motor Protector 380V-50HZ KA314-HLTL203 (H.C)	1	Price on req.
33	142-124-20	Plain Washer M4 SPC	2	Price on req.
34	142-160-31	Spring Washer M4 SWRH	2	Price on req.
35	143-017-19	Pan Screw M4x14 SWRM	2	Price on req.
36	142-198-12	Wave Washer 6306 SK5	1	Price on req.
37	052-109-14	Bearing 6306ZZC3	1	Price on req.
38	122-245-13	O-Ring 71.4xd3.1 NBR	1	Price on req.
39	058-179-13	Lead Wire Protection Plate d85xd218x1.5t Bakelite	1	Price on req.
40	055-	Rotor and Shaft	1	Price on req.
41	147-022-19	Impeller Key 7x7x28l Stainless Steel	1	Price on req.
42	056-912-10	Stator 440V/60HZ	1	Price on req.
42	056-948-15	Stator 380V	1	Price on req.
43	121-504-10	Packing (Water Way, Upp.) KTZ411/611 NBR	1	Price on req.
44	064-487-16	Motor Frame FC	1	Price on req.
45	140-080-14	Hex.Bolt M10x45 SUS304 (EN X5CrNi18-10)	4	Price on req.
46	142-164-19	Spring Washer M10 SUS304	4	Price on req.
47	140-032-37	Hex.Bolt M6x15 SWRM	4	Price on req.
48	062-221-14	Bearing Cover d85xd125x3.2t SPCC	1	Price on req.
49	052-112-10	Bearing 6309ZZC3	1	Price on req.
50	146-027-11	Retaining Ring C45 SK5	1	Price on req.
51	122-285-15	O-Ring 155xd3.1 NBR	1	Price on req.
52	060-000-88	Bearing Housing (FC)	1	Price on req.
53	140-269-19	Hex. Socket Cap Bolt M8x25 SUS304 (EN X5CrNi18-10) Stainless Steel	4	Price on req.
54	025-001-22	Mechanical Seal HT-3035N SIC	1	Price on req.
55, 56	143-070-10	Pan Screw M5x6 SWRM	8	Price on req.
55, 56	030-138-14	Oil Lifter HT-3035 Resin	1	Price on req.
55, 56	030-147-16	Seal Stopper HT-3035 SPCC	1	Price on req.
57	122-285-15	O-Ring 155xd3.1 NBR	1	Price on req.
58	121-503-19	Packing (Water Way, Low.) KTZ411/611 NBR	1	Price on req.
59	029-333-17	Oil Casing KTZ47.5/611 FC	1	Price on req.
60	142-210-11	Plain Washer d8.6xd13.4x1t SUS304 (EN X5CrNi18-10) Stainless Steel	4	Price on req.
61	140-055-10	Hex.Bolt M8x25 SUS304	4	Price on req.
62	121-247-12	Packing d12.3xd18x2t PE	1	Price on req.
63	035-113-18	Oil Plug M12x14 SUS304	1	Price on req.
64	071-198-19	Shaft Sleeve d25xd35x17l SUS403 (EN X6Cr13) Stainless Steel	1	Price on req.
65	020-001-06	Pump Casing KTZ411/611 (FC)	1	Price on req.
66	142-164-19	Spring Washer M10 SUS304	2	Price on req.
67	140-449-15	Hex.Bolt M10x140 SUS304 (EN X5CrNi18-10) Stainless Steel	2	Price on req.
68	122-360-15	O-Ring 46.5xd2.5 NBR	1	Price on req.
69	026-238-12	Labyrinth Ring GHV/GHZ-7.5/11KW SUS304 (EN X5CrNi18-10) Stainless Steel	1	Price on req.
70	040-107-28	Impeller Shim d25.2xd38x0.3t SUS304	1	Price on req.
71	021-K86-17	Impeller (50HZ) KTZ411-50 HiCrFC	1	Price on req.
72	047-105-14	Impeller Thread Protect.Cover No.4(22) SPC	1	Price on req.
73	141-009-38	Hex.Nut M20(H=12) SUS304	1	Price on req.
74	141-034-16	Hex.Cap Nut M20 SUS304	1	Price on req.
75	120-111-13	Packing (S.Cover) d221xd268x0.3t PE	1	Price on req.
76	022-000-58	Suction Cover KTZ47.5/411 FCD	1	Price on req.
77	142-128-11	Plain Washer M10 Kaltgewalztes Blech	3	Price on req.
78	140-075-16	Hex.Bolt M10x25 SUS304	3	Price on req.

Exploded View KTZ411-50



KTZ411-50