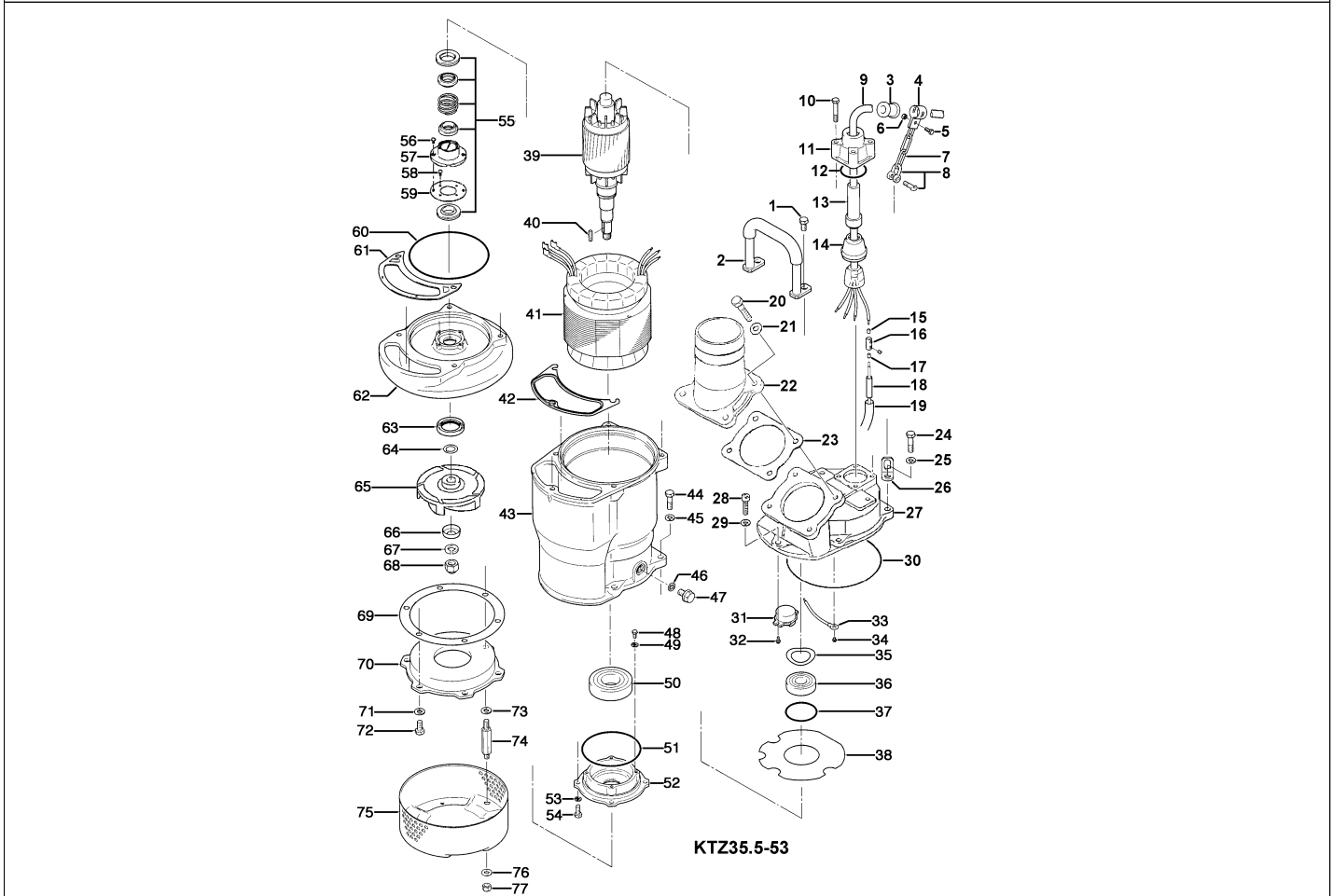


**KTZ35.5-53**

Kontroll-Nr. --

2024-04-04 V.01.02.2023

Pos.no	Item no.	Description	Qty.	UP / EUR
--------	----------	-------------	------	----------



1.1.1	173-003-41	Packing & O-Ring Set	1	
1	140-074-15	Hex.Bolt M10x20 SUS304	3	
2	068-000-36	Handle KTZ23.7/45.5 SGP+SS	1	
3	010-121-19	Cable Clip Rubber (EUR,NSU) No.1 NBR	1	
4	010-120-18	Cable Clip No.2-1 SPC	1	Price on req.
5	140-032-37	Hex.Bolt M6x15 SWRM	1	
6	141-004-59	Hex.Nut M6 SWRM	1	
7	095-000-95	Chain 4mm(4L)L=24 SS	1	
8	011-110-11	Shackle 6mm SS	1	
9	001-TEG-02	Cabtyre Cable Set (20m) H07RN-F4Cx2,5mm <sup>2</sup> without stuffing box	1	
9	M01-TEG-02	Cabtyre Cable Set (20m) NSSHÖU 4Cx2,5mm <sup>2</sup>	1	
10	140-060-18	Hex.Bolt M8x50 SUS304	4	
11	006-167-17	Stuffing Box No.1-3 FC	1	
12	122-121-12	O-Ring G-50 NBR	1	
13	004-167-11	Cable Bush No.1 CR	1	
14	008-156-19	Mould Cover No.1-3 ADC	1	
15	009-123-10	Terminal (EUR,NSU) P-5.5 CU	4	
16	009-101-12	Terminal(C/W Screw) d12x(d6.6xd6.6)x25l C3604	4	
17	009-123-10	Terminal (EUR,NSU) P-5.5 CU	4	
18	002-135-14	Heat Shrink Tube (Sold per meter) A(d15x0.3t) (Vm)	1	
19	002-132-11	Heat Shrink Tube (Sold per meter) A4(d17x0.27t) (Vm)	1	
20	140-000-87	Hex Bolt M10x35(B=14) SUS304	4	
21	142-128-11	Plain Washer M10 Kaltgewalztes Blech	4	
22	032-000-91	Hose Coupling (for EUR) KTZ33.7-53/63(Angle,BSPT-3) FC	1	
22	032-000-83	Hose Coupling KTZ33.7-53/63(Angle) ADC	1	
23	121-001-48	Packing (Hose Coupling) KTZ-3.7/7.5(Angle) NBR	1	
24	140-079-10	Hex.Bolt M10x40 SUS304 (EN X5Cr18-10)	4	
25	142-164-19	Spring Washer M10 SUS304	4	
26	070-117-11	L-Shape Fitting 40x25x4.5t d13Hole SPC	1	
27	050-001-10	Motor Bracket FC	1	
28	140-288-14	Hex. Socket Cap Bolt M10x35 SUS304 (EN X5CrNi18-10) Stainless	1	
29	142-164-19	Spring Washer M10 SUS304	1	
30	122-000-09	O-Ring 195xd3.8 NBR	1	
31	053-506-18	Motor Protector 380-420V-50HZ 380-460V-60HZ KA314-HMXL00 (B.C)	1	
32	143-126-12	Pan Screw (w/Spring Washer/Plain Washer) M4x12 SWRM	2	
33	009-294-13	Earth Terminal 3.5mmx170L	1	
34	143-085-34	Pan Screw (w/Spring Washer) M4x6 C3604 (EN CuZn39Pb3)	1	
35	142-197-11	Wave Washer #6305 SK-5	1	
36	052-108-13	Bearing 6305ZZC3	1	
37	122-244-12	O-Ring 61.4xd3.1 NBR	1	

**KTZ35.5-53**

Kontroll-Nr. --

2024-04-04 V.01.02.2023

Pos.no	Item no.	Description	Qty.	UP / EUR
38	058-000-35	Lead Wire Protection Plate d84xd199.5x1.6t PE	1	
39	055-002-59	Rotor	1	
40	147-026-13	Impeller Key 5x5x25l Stainless Steel	1	
41	056-007-29	Stator 380/400/415V-50Hz(EUR)	1	
42	121-000-14	Packing (Water Way, Upp.) KTZ35.5/67.5-51/61 NBR	1	
43	064-000-02	Motor Frame FC	1	
44	140-078-19	Hex.Bolt M10x30 SUS304	4	
45	142-164-19	Spring Washer M10 SUS304	4	
46	121-247-12	Packing d12.3xd18x2t PE	1	
47	140-000-17	Hex.Bolt (w/Flange) M12x15(Oil Plug) SUS304 (EN X5CrNi18-10) Stainless Steel	1	
48	140-000-23	Hex.Bolt (w/Spring Washer) M5x10 SWRM	4	
49	062-000-02	Bearing Cover d5.5xd18x2t SPC	4	Price on req.
50	052-001-07	Bearing 6308ZC3	1	
51	122-135-19	O-Ring G-120(119.4xd3.1) NBR	1	
52	060-001-38	Bearing Housing FC	1	Price on req.
53	142-163-34	Spring Washer M8 SWRH	4	
54	140-054-48	Hex.Bolt M8x20 SWRM	4	
55	025-001-00	Mechanical Seal H-25T SiC	1	
56	143-070-23	Pan Screw M5x6 SWRM	2	
57	030-143-12	Oil Lifter H-25(A)(T) Resin	1	
58	143-070-23	Pan Screw M5x6 SWRM	4	
59	030-148-17	Seal Stopper For HT-2530 SPCC	1	
60	122-283-13	O-Ring 165xd3.1 NBR	1	
61	121-124-12	Packing (Water Way, Low.) KTV-37/55 NBR	1	
62	020-001-04	Pump Casinq KTZ35.5/45.5 FC	1	
63	026-144-49	Oil Seal TC-40588 NBR	1	
64	040-106-27	Impeller Shim d20.2xd30x0.3t SUS304 (EN X5CrNi18-10) Stainless Steel	1	
65	021-009-10	Impeller (50Hz) HiCrFC	1	
66	047-104-26	Impeller Thread Protect.Cover No.3B(18) SUS304 (EN X5CrNi18-10) Stainless Steel	1	
67	142-166-11	Spring Washer M16 SUS304	1	
68	141-033-15	Hex.Cap Nut M16 SUS304 (EN X5Cr18-10)	1	
69	120-109-21	Packing (S.Cover) d180xd220x0.3t PE	1	
70	022-000-55	Suction Cover KTZ33.7 (FCD)	1	
71	142-128-11	Plain Washer M10 Kaltgewalztes Blech	3	
72	140-074-15	Hex.Bolt M10x20 SUS304	3	
73	142-128-11	Plain Washer M10 Kaltgewalztes Blech	3	
74	144-000-31	Stud Bolt M10x94(20/14) DIN 1.4006 (EN X12Cr13) Edelstahl	3	
75	023-471-10	Strainer Stand KTZ23.7/45.5 SPCC	1	
76	142-128-11	Plain Washer M10 Kaltgewalztes Blech	3	
77	141-006-77	Hex.Nut M10 S45C	3	
	173-003-41	Packing & O-Ring Set	1	
	183-008-11	Impeller Puller A Typ No.3 1	1	
	##oilVG32	ml Turbine Oil ISO VG32	1100	Price on req.