

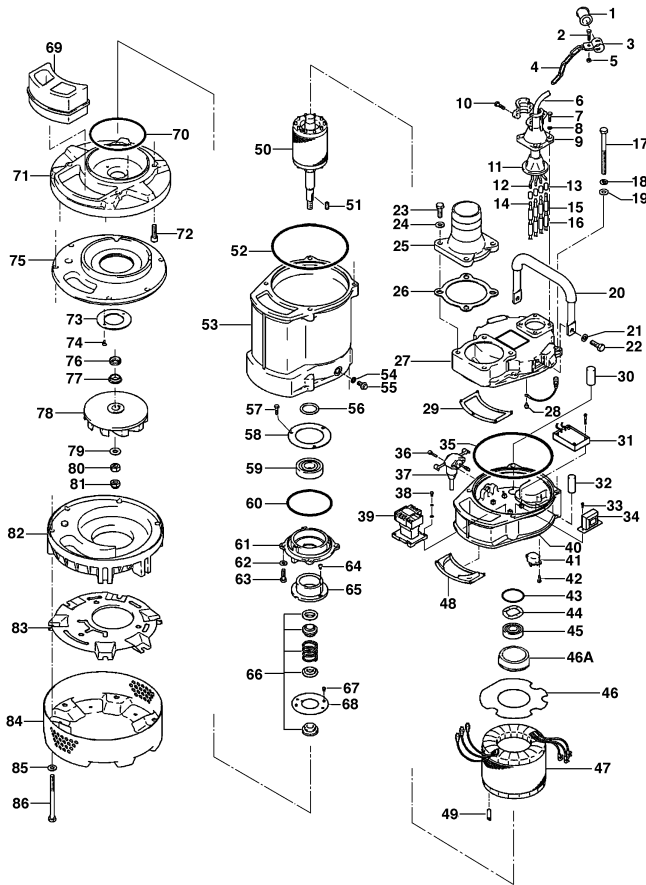
**KTVE35.5-51**

Kontroll-Nr. --

2024-04-03 V.01.02.2023

Pos.no	Item no.	Description	Qty.	UP / EUR
--------	----------	-------------	------	----------

KTVE35.5-51


**KTVE35.5-51**

1.1.1	173-559-11	Packing & O-Ring Set	1	
1	010-124-15	Cable Clip Rubber No.3 NBR	1	
2	140-032-37	Hex.Bolt M6x15 SWRM	1	
3	010-120-18	Cable Clip No.2-1 SPC	1	Price on req.
4	095-131-18	Chain 4mm(3L) SS	1	
5	141-004-33	Hex.Nut M6 SWRM	1	
6	001-TEG-01	Cabtyre Cable Set (20m) H07RN-F4Cx2.5mm² without stuffing box	1	
6	M01-TEG-01	Cabtyre Cable Set (20m) NSSHOU 4Cx2.5mm²	1	
7	140-418-15	Hex.Bolt M8x25(B=12) SUS304 (EN X5CrNi18-10) Stainless Steel	4	
8	142-210-11	Plain Washer d8.6xd13.4x1t SUS304 (EN X5CrNi18-10) Stainless Steel	4	
9	006-000-68	Stuffing Box No.1-(w/Clamp) ADC	1	
10	140-033-12	Hex.Bolt M6x16 SUS304 (EN X5CrNi18-10) Stainless Steel	2	
11	008-122-16	Mould Cover No.1-7 CR	1	
12	009-123-10	Terminal (EUR,NSU) P-5.5 CU	4	
13	009-101-12	Terminal(C/W Screw) d12x(d6.6xd6.6)x25l C3604	4	
14	009-123-10	Terminal (EUR,NSU) P-5.5 CU	4	
15	002-129-15	Heat Shrink Tube (Sold per meter) EVA(d14x1t) (Vm)	1	
16	002-132-11	Heat Shrink Tube (Sold per meter) A4(d17x0.27t) (Vm)	1	
17	140-092-19	Hex.Bolt M10x110 SUS304 (EN X5CrNi18-10) Stainless Steel	4	
18	142-164-19	Spring Washer M10 SUS304	4	
19	142-128-11	Plain Washer M10 Kaltgewalztes Blech	4	
20	068-000-20	Handle KTV2-80 (SPG + NBR)	1	
21	142-164-19	Spring Washer M10 SUS304	2	
22	140-074-15	Hex.Bolt M10x20 SUS304	2	
23	140-000-01	Hex.Bolt M10x30(B=14) SUS304 (EN X5CrNi18-10) Stainless Steel	4	
24	142-128-11	Plain Washer M10 Kaltgewalztes Blech	4	
25	032-437-12	Hose Coupling (for EUR)KTV(BSPT-3) FC	2	
26	121-141-15	Packing KRB-3/4 Type NR	1	
27	051-259-17	Motor Head Cover ADC	1	
28	143-085-34	Pan Screw (w/Spring Washer) M4x6 C3604 (EN CuZn39Pb3)	1	
29	121-456-16	Packing (Water Way, Upp.) KTV2-55 NBR	1	
30	016-142-17	Lead Wire Protection Bush d10x60l	1	
31	114-000-89	Relay Unit MEOK1-KA1(KTVE)	1	
32	143-183-17	Truss Screw M3x20 SUS304 (EN X5CrNi18-10) Stainless Steel	4	
33	016-143-18	Lead Wire Protection Bush d18x45l	1	
34	143-169-17	Truss Screw M3x8 SWRM	2	
35	115-149-14	Transformer 380/400/415V-50HzEK400/20	1	
36	122-410-11	O-Ring 190xd3.8 NBR	1	
37	140-427-17	Hex.Bolt (w/Plain Washer) M5x15 SUS304 (EN X5CrNi18-10)	2	
	090-000-43	Electrode Level Sensor EK-4(w/Gland)	1	

**KTVE35.5-51**

Kontroll-Nr. --

2024-04-03 V.01.02.2023

Pos.no	Item no.	Description	Qty.	UP / EUR
38	143-170-11	Truss Screw M4x6 SWRM	2	
39	114-168-16	Electromagnetic Contactor SD-M19/SD-Q19	1	
40	050-458-15	Motor Bracket AC	1	
41	053-001-63	Motor Protector 380/400/415V-50Hz KA314-HRXL00 (H.C)	1	
42	143-136-15	Truss Screw M4x10 SWRM	2	
43	122-244-12	O-Ring 61.4xd3.1 NBR	1	
44	142-197-11	Wave Washer #6305 SK-5	1	
45	052-108-13	Bearing 6305ZZC3	1	
46A	016-144-19	Rubber Ring NBR	1	
46	058-170-14	Lead Wire Protection Plate d80xd170x1.6t Bakelite	1	
47	056-004-76	Stator 400/415V-50Hz(EUR)	1	
48	121-559-10	Packing (Water Way, Mid.) KTVE35.5-50/60 NBR	1	
49	145-030-14	Stator Set Pin d8x40 S45C	1	
50	055-679-19	Rotor	1	
51	147-073-15	Impeller Key 5x5x22l Stainless Steel	1	
52	122-410-11	O-Ring 190xd3.8 NBR	1	
53	064-000-81	Motor Frame ADC	1	
54	121-247-12	Packing d12.3xd18x2t PE	1	
55	140-000-17	Hex.Bolt (w/Flange) M12x15(Oil Plug) SUS304 (EN X5CrNi18-10) Stainless Steel	1	
56	061-170-14	Bearing Collar d35.1xd46x2t SPCC	1	
57	140-029-28	Hex.Bolt M6x10 SWRM	3	Price on req.
58	062-219-19	Bearing Cover d70xd105x2.3t SPCC	1	
59	052-110-18	Bearing 6307ZZC3	1	
60	122-133-17	O-Ring G-110 NBR	1	
61	060-000-85	Bearing Housing (ADC)	1	
62	142-127-23	Plain Washer M8 SPC	4	
63	140-054-48	Hex.Bolt M8x20 SWRM	4	
64	143-070-23	Pan Screw M5x6 SWRM	2	
65	030-143-12	Oil Lifter H-25(A)(T) Resin	1	
66	025-001-00	Mechanical Seal H-25T SIC	1	
67	143-070-23	Pan Screw M5x6 SWRM	2	
68	030-152-14	Seal Stopper H-25(A)(T) SPCC	1	
69	121-451-24	Packing (Water Way, Low.) KTV2-55 SBR	1	
70	122-285-15	O-Ring 155xd3.1 NBR	1	
71	029-000-79	Oil Casing KTV2-55 ADC	1	
72	140-288-14	Hex. Socket Cap Bolt M10x35 SUS304 (EN X5CrNi18-10) Stainless	4	
73	058-000-26	Fixing Plate d39xd85x3t SUS304 (EN X5CrNi18-10) Stainless Steel	1	
74	143-166-14	Flat Screw M4x8 SUS304 (EN X5CrNi18-10) Stainless Steel	2	
75	031-000-10	Wear Ring KTV2-55 BR+NR	1	
76	122-444-14	V-Ring VR-25 NBR	1	
77	071-298-10	Shaft Sleeve d20xd25x9l SUS304 (EN X5CrNi18-10) Stainless Steel	1	
78	021-G11-18	Impeller (50Hz) FCD	1	
79	142-130-29	Plain Washer M16 SPC	1	
80	141-008-11	Hex.Nut M16 SUS304 (EN X5CrNi18-10)	1	
81	141-033-15	Hex.Cap Nut M16 SUS304 (EN X5Cr18-10)	1	
82	020-891-37	Pump Casing (New) KTV2-55 BR+NR	1	
83	127-252-18	Fixing Plate (New) KTV2-55 SPCC	1	
84	023-444-14	Strainer Stand KTV2-55 SPCC	1	
85	142-128-11	Plain Washer M10 Kaltgewalztes Blech	6	
86	140-091-18	Hex.Bolt M10x100 SUS304 (EN X5CrNi18-10) Stainless Steel	6	
	173-559-11	Packing & O-Ring Set	1	
	##oilVG32	ml Turbine Oil ISO VG32	680	Price on req.
	090-126-15	Electrode Extension KTVE/KTZE	1	