

KTVE35.5-50

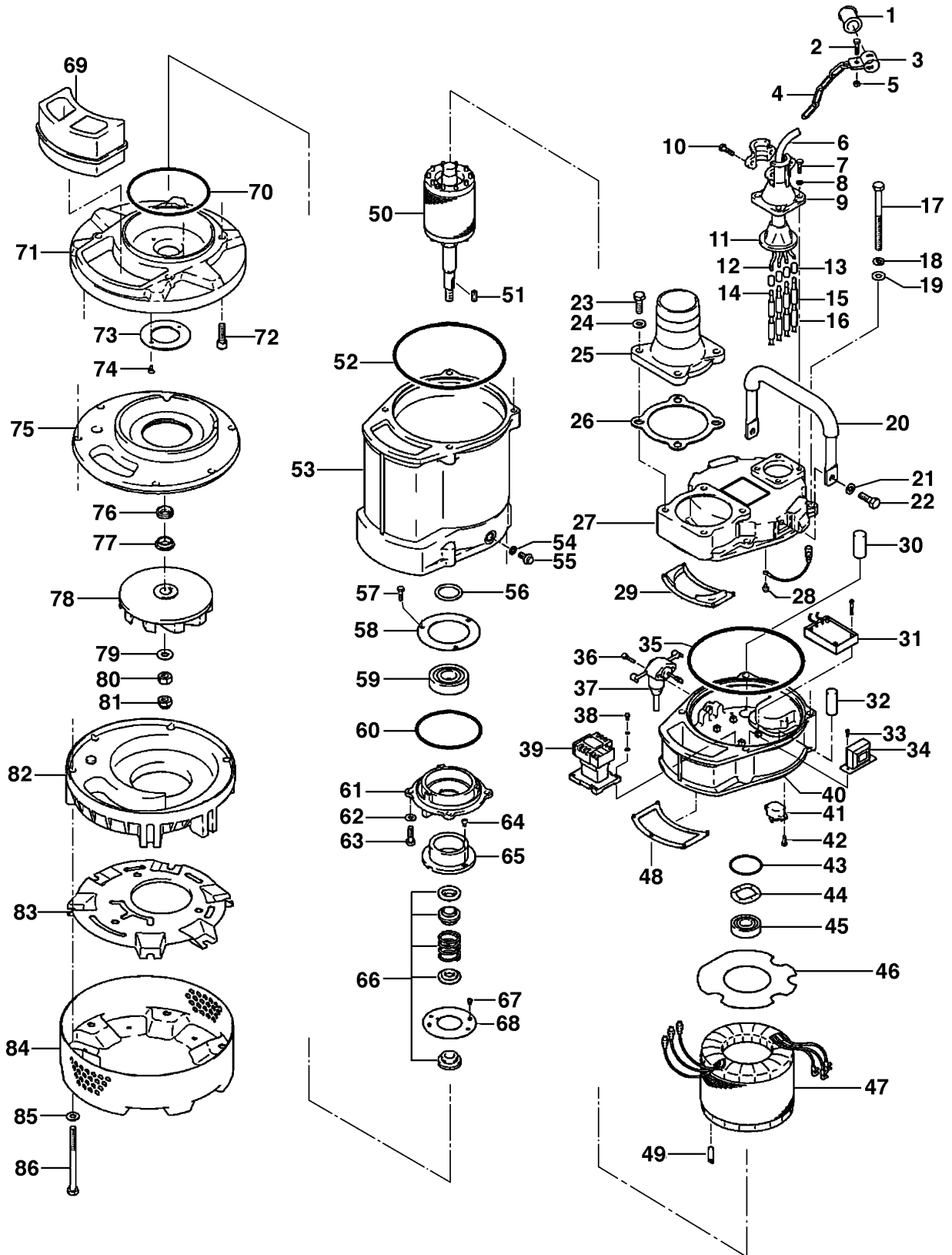
Kontroll-Nr. --

2019-01-28 V.20 / 1.11.2017

Pos.no	Item no.	Description	Quant.	UP
1	010-124-15	Dichtungs-Oring-Satz	1	Price on req.
2	140-032-37	Cable Clip Rubber No.3 NBR	1	Price on req.
3	010-120-18	Hex.Bolt M6x15 SWRM	1	Price on req.
4	095-131-18	Cable Clip No.2-1 SPC	1	Price on req.
5	141-004-33	Chain 4mm(3L) SS	1	Price on req.
6	001-TEG-01	Hex.Nut M6 SWRM	1	Price on req.
6	M01-TEG-01	Cabtyre Cable Set (20m) H07RN-F4Cx2,5mm <sup>2</sup> without stuffing box	1	Price on req.
7	140-418-15	Cabtyre Cable Set (20m) NSSHÖU 4Cx2,5mm <sup>2</sup>	1	Price on req.
8	142-210-11	Hex.Bolt M8x25(B=12) SUS304 (EN X5CrNi18-10) Stainless Steel	4	Price on req.
9	003-122-24	Plain Washer d8.6xd13.4x1t SUS304 (EN X5CrNi18-10) Stainless Steel	4	Price on req.
10	140-033-12	Stuffing Box No.1-1(w/Clamp) ADC	1	Price on req.
11	008-122-16	Hex.Bolt M6x16 SUS304 (EN X5CrNi18-10) Stainless Steel	2	Price on req.
12	009-123-10	Mould Cover No.1-7 CR	1	Price on req.
13	009-101-12	Terminal (EUR,NSU) P-5.5 CU	4	Price on req.
14	009-123-10	Terminal(C/W Screw) d12x(d6.6xd6.6)x25l C3604	4	Price on req.
15	002-129-15	Terminal (EUR,NSU) P-5.5 CU	4	Price on req.
16	002-132-11	Heat Shrink Tube (Sold per meter) EVA(d14x1t) (Vm)	1	Price on req.
17	140-092-19	Heat Shrink Tube (Sold per meter) A4(d17x0.27t) (Vm)	1	Price on req.
18	142-164-19	Hex.Bolt M10x110 SUS304 (EN X5CrNi18-10) Stainless Steel	4	Price on req.
19	142-128-11	Spring Washer M10 SUS304	4	Price on req.
20	068-000-20	Plain Washer M10 Kaltgewalztes Blech	4	Price on req.
21	142-164-19	Handle KTV2-80 (SPG + NBR)	1	Price on req.
22	140-074-15	Spring Washer M10 SUS304	2	Price on req.
23	140-076-59	Hex.Bolt M10x20 SUS304	2	Price on req.
24	142-128-11	Hex.Bolt M10x30 SUS410 (EN X12Cr13) Stainless Steel	4	Price on req.
25	032-437-12	Plain Washer M10 Kaltgewalztes Blech	4	Price on req.
26	121-141-15	Hose Coupling (for EUR)KTV(BSPT-3) FC	1	Price on req.
27	051-259-17	Packing KRB-3/4 Type NR	1	Price on req.
28	143-085-34	Motor Head Cover ADC	1	Price on req.
29	121-456-16	Pan Screw (w/Spring Washer) M4x6 C3604 (EN CuZn39Pb3)	1	Price on req.
30	016-142-17	Packing (Water Wav. Upp.) KTV2-55 NBR	1	Price on req.
31	114-000-89	Lead Wire Protection Bush d10x60l	1	Price on req.
32	016-143-18	Relay Unit MEOK1-KA1(KTVE)	1	Price on req.
33	143-169-17	Lead Wire Protection Bush d18x45l	1	Price on req.
34	115-149-14	Truss Screw M3x8 SWRM	2	Price on req.
35	122-410-11	Transformer 380/400/415V-50HzEK400/20	1	Price on req.
36	140-427-17	O-Ring 190xd3.8 NBR	1	Price on req.
37	090-000-43	Hex.Bolt (w/Plain Washer) M5x15 SUS304 (EN X5CrNi18-10)	2	Price on req.
38	143-170-11	Electrode Level Sensor EK-2CR	1	Price on req.
39	114-168-16	Truss Screw M4x6 SWRM	2	Price on req.
40	050-458-15	Electromagnetic Contactor SD-M19/SD-Q19	1	Price on req.
41	053-001-63	Motor Bracket AC	1	Price on req.
42	143-136-15	Motor Protector 380/400/415V-50Hz KA314-HRXL00 (H.C)	1	Price on req.
43	122-244-12	Truss Screw M4x10 SWRM	2	Price on req.
44	142-197-11	O-Ring 61.4xd3.1 NBR	1	Price on req.
45	052-108-13	Wave Washer #6305 SK-5	1	Price on req.
46	058-170-14	Bearing 6305ZZC3	1	Price on req.
47	056-001-99	Lead Wire Protection Plate d80xd170x1.6t Bakelite	1	Price on req.
48	121-559-10	Stator	1	Price on req.
49	145-030-14	Packing (Water Way, Mid.) KTVE35.5-50/60 NBR	1	Price on req.
50	055-679-19	Stator Set Pin d8x40 S45C	1	Price on req.
51	147-073-15	Rotor w/Bearing	1	Price on req.
52	122-410-11	Impeller Key 5x5x22l Stainless Steel	1	Price on req.
53	064-472-18	O-Ring 190xd3.8 NBR	1	Price on req.
54	121-247-12	Motor Frame ADC	1	Price on req.
55	140-000-17	Packing d12.3xd18x2t PE	1	Price on req.
56	061-170-14	Hex.Bolt (w/Flange) M12x15(Oil Plug) SUS304 (EN X5CrNi18-10) Stainless Steel	1	Price on req.
57	140-029-28	Bearing Collar d35.1xd46x2t SPCC	1	Price on req.
58	062-219-19	Hex.Bolt M6x10 SWRM	3	Price on req.
59	052-110-18	Bearing Cover d70xd105x2.3t SPCC	1	Price on req.
60	122-133-17	Bearing 6307ZZC3	1	Price on req.
61	060-000-85	O-Ring G-110 NBR	1	Price on req.
62	142-127-23	Bearing Housing (ADC)	1	Price on req.
63	140-054-48	Plain Washer M8 SPC	4	Price on req.
64	143-070-23	Hex.Bolt M8x20 SWRM	4	Price on req.
65	030-143-12	Pan Screw M5x6 SWRM	2	Price on req.
66	025-001-00	Oil Lifter H-25(A)(T) Resin	1	Price on req.
67	143-070-10	Mechanical Seal H-25T SiC	1	Price on req.
68	030-152-14	Pan Screw M5x6 SWRM	2	Price on req.
69	121-451-24	Seal Stopper H-25(A)(T) SPCC	1	Price on req.
70	122-285-15	Packing (Water Way, Low.) KTV2-55 SBR	1	Price on req.
71	029-000-79	O-Ring 155xd3.1 NBR	1	Price on req.
72	140-288-14	Oil Casing KTV2-55 ADC	1	Price on req.
73	058-000-26	Hex.Socket Cap Bolt M10x35 SUS304	4	Price on req.
74	143-166-14	Fixing Plate d39xd85x3t SUS304 (EN X5CrNi18-10) Stainless Steel	1	Price on req.
75	031-000-10	Flat Screw M4x8 SUS304 (EN X5CrNi18-10) Stainless Steel	2	Price on req.
76	122-444-14	Wear Ring KTV2-55 BR+NR	1	Price on req.
77	071-298-10	V-Ring VR-25 NBR	1	Price on req.
78	021-G11-18	Shaft Sleeve d20xd25x9l SUS304 (EN X5CrNi18-10) Stainless Steel	1	Price on req.
79	142-130-29	Impeller (50Hz) 50Hz FCD	1	Price on req.
80	141-008-11	Plain Washer M16 SPC	1	Price on req.
81	141-033-15	Hex.Nut M16 SUS304 (EN X5CrNi18-10)	1	Price on req.
		Hex.Cap Nut M16 SUS304 (EN X5Cr18-10)	1	Price on req.



# Exploded View KTVE35.5-50



KTVE35.5-50