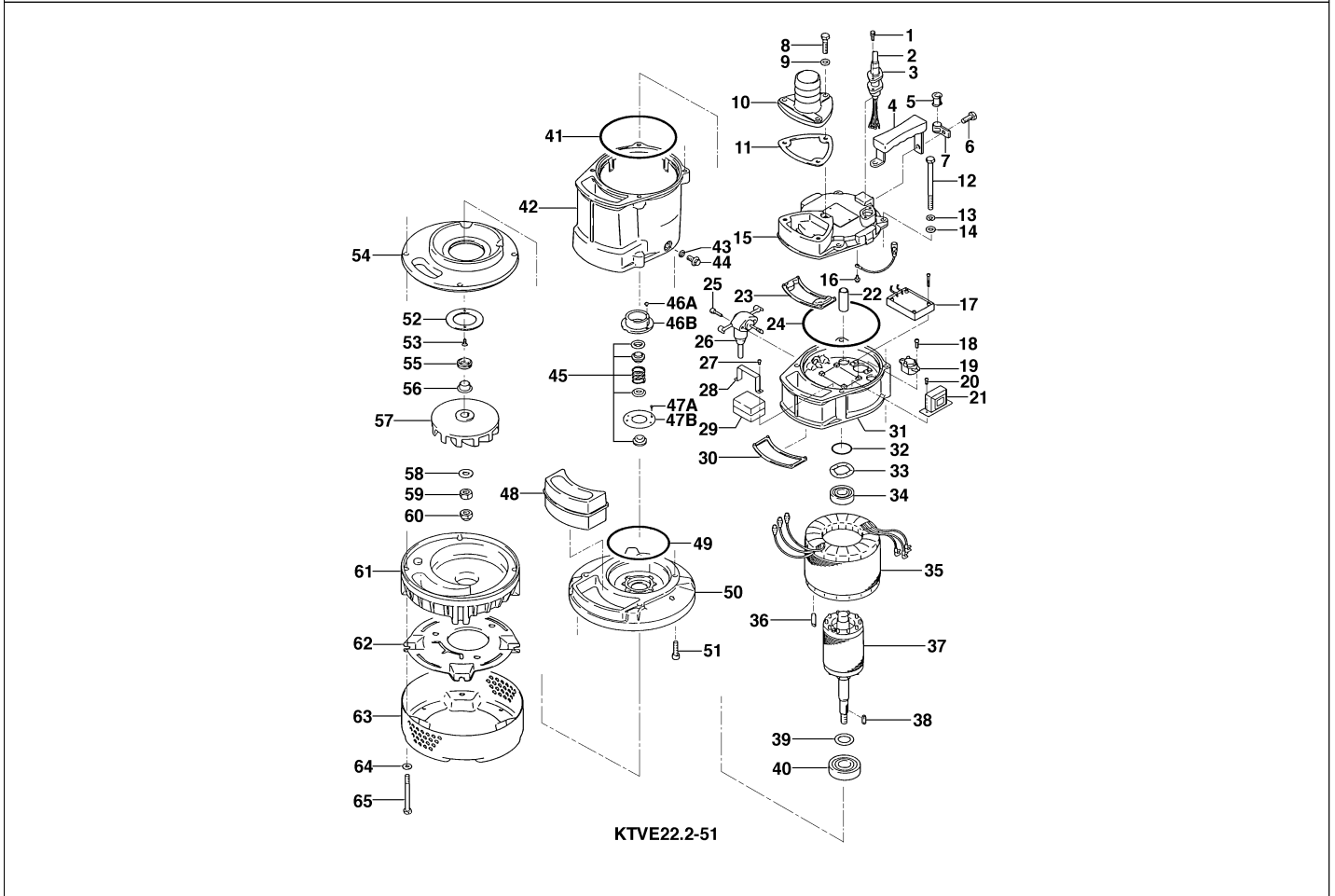


KTVE22.2-51

Kontroll-Nr. --

2024-04-03 V.01.02.2023

Pos.no	Item no.	Description	Qty.	UP / EUR
--------	----------	-------------	------	----------



1.1.1	173-522-15	Packing & O-Ring Set	1	
1	140-427-17	Hex.Bolt (w/Plain Washer) M5x15 SUS304 (EN X5CrNi18-10)	2	
2	001-TEG-31	Cabletyre Cable Set (20m) H07RN-F4Cx1,5mm² with gland	1	
2	M01-TEG-31	Cabletyre Cable Set (20m) NSSHOU 4Cx1,5mm²	1	
	061-TEG-06	Cable Repair Kit	1	
3	003-190-10	Gland SUS316 (EN X5Cr-Ni-Mo17-12-2)	1	
4	068-000-42	068-000-42	1	
5	010-126-17	Cable Clip Rubber HS2 NBR	1	
6	140-054-19	Hex.Bolt M8x20 SUS304 (EN X5Cr18-10)	1	
7	010-130-14	Cable Clip HK2-4/15 SPC	1	
8	140-057-12	Hex.Bolt M8x30 SUS304 (EN X5CrNi18-10) Stainless Steel	3	
9	142-210-11	Plain Washer d8.6xd13.4x1t SUS304 (EN X5CrNi18-10) Stainless Steel	3	
10	032-356-16	Hose Coupling 50mm(KTV2) ADC	1	
10	032-000-24	Hose Coupling BSPT-2 FCD	1	
11	121-001-09	Packing KTV2-15/22 NBR	1	
12	140-070-11	Hex.Bolt M8x100 SUS304 (EN X5CrNi18-10) Stainless Steel	4	
13	142-210-11	Plain Washer d8.6xd13.4x1t SUS304 (EN X5CrNi18-10) Stainless Steel	4	
14	142-127-10	Plain Washer M8 SUS304 (EN X5CrNi18-10) Stainless Steel	1	
15	051-254-12	Motor Head Cover ADC	1	
16	143-085-34	Pan Screw (w/Spring Washer) M4x6 C3604 (EN CuZn39Pb3)	1	
17	114-000-89	Relay Unit MEOK1-KA1(KTVE)	1	
18	143-136-15	Truss Screw M4x10 SWRM	2	
19	053-411-15	Motor Protector 380/400/415V-50HZ KA313-GQXL104 (T)	1	
20	143-169-17	Truss Screw M3x8 SWRM	2	
21	115-149-14	Transformer 380/400/415V-50HzEK400/20	1	
22	016-139-11	Lead Wire Protection Bush KTVE21.5/22.2	2	
23	121-445-12	Packing (Water Way, Upp.) KTV2-15/22 NBR	1	
24	122-473-12	O-Ring 150xd3.3 NBR	1	
25	140-427-17	Hex.Bolt (w/Plain Washer) M5x15 SUS304 (EN X5CrNi18-10)	2	
26	090-000-43	Electrode Level Sensor EK-4(w/Gland)	1	
27	143-170-11	Truss Screw M4x6 SWRM	2	
28	127-233-13	Power Relay Fixing Plate SECC	1	
29	114-170-11	Electromagnetic Contactor G7L-2A-B(DC24V)	1	
30	121-519-18	Packing (Water Way, Mid.) KTVE21.5/22.2 NBR	1	
31	050-431-25	Motor Bracket ADC	1	
32	122-293-16	O-Ring 47xd3.1 NBR	1	
33	142-195-19	Wave Washer #6204/6303 SK-5	1	
34	052-187-16	Bearing (w/O-ring) AC-6204ZZC3	1	
35	056-002-41	Stator 380/400/415V-50Hz	1	
36	145-028-19	Stator Set Pin d6x32 S45C	1	

KTVE22.2-51

Kontroll-Nr. --

2024-04-03 V.01.02.2023

Pos.no	Item no.	Description	Qty.	UP / EUR
37	055-662-19	Rotor	1	
38	147-128-16	Impeller Key 5x5x18.5L SUS403 (EN X6Cr13)	1	
39	061-161-12	Bearing Collar d25.1xd36x1.6t SPC	1	
40	052-108-13	Bearing 6305ZZC3	1	
41	122-473-12	O-Ring 150xd3.3 NBR	1	
42	064-000-84	Motor Frame ADC	1	
43	121-246-11	Packing (Oil Plug) d10.3xd16x2t PE	1	
44	035-000-01	Oil PlugM10x16(B=13) EN X5CrNi18-10	1	
45	025-000-99	Mechanical Seal H-20T SiC	1	
46A	143-070-23	Pan Screw M5x6 SWRM	2	
46B	030-144-13	Oil Lifter H-20(A)(T) Resin	1	
47A	143-070-23	Pan Screw M5x6 SWRM	2	
47B	030-155-17	Seal Stopper H-20(KTV2) SPCC	1	
48	121-001-04	Packing (Water Way, Low.)KTV2-15/22 SBR	1	
49	122-134-18	O-Ring G-115 NBR	1	
50	029-000-77	Oil Casing KTV2-15/22 ADC	1	
51	140-270-13	Hex.Socket Cap Bolt M8x30 SUS304	4	
52	058-000-25	Protection Plate d44xd70x3t SUS304 (EN X5CrNi18-10) Stainless Steel	1	
53	143-166-14	Flat Screw M4x8 SUS304 (EN X5CrNi18-10) Stainless Steel	2	
54	031-000-08	Wear Ring KTV2-15/22 BR+NR	1	
55	122-443-13	V-Ring VR-20 NBR	1	
56	071-297-19	Shaft Sleeve d16xd20x10l SUS304	1	
57	021-F74-18	Impeller (50Hz) FCD	1	
58	142-129-25	Plain Washer M12 SPC	1	
59	141-007-10	Hex.Nut M12 SUS304	1	
60	141-032-14	Hex.Cap Nut M12 SUS304	1	
61	020-B19-18	Pump Casing (New) KTV2-15/22 BR+NR	1	
62	127-249-12	Fixing Plate (New) KTV2-15/22 SPCC	1	
63	023-432-19	Strainer Stand KTV2-15/22 SPCC	1	
64	142-127-23	Plain Washer M8 SPC	4	
65	140-067-15	Hex.Bolt M8x85 SUS304 (EN X5CrNi18-10) Stainless Steel	4	
	173-522-15	Packing & O-Ring Set	1	
	##oilVG32	ml Turbine Oil ISO VG32	270	Price on req.
	090-126-15	Electrode Extension KTVE/KTZE	1	