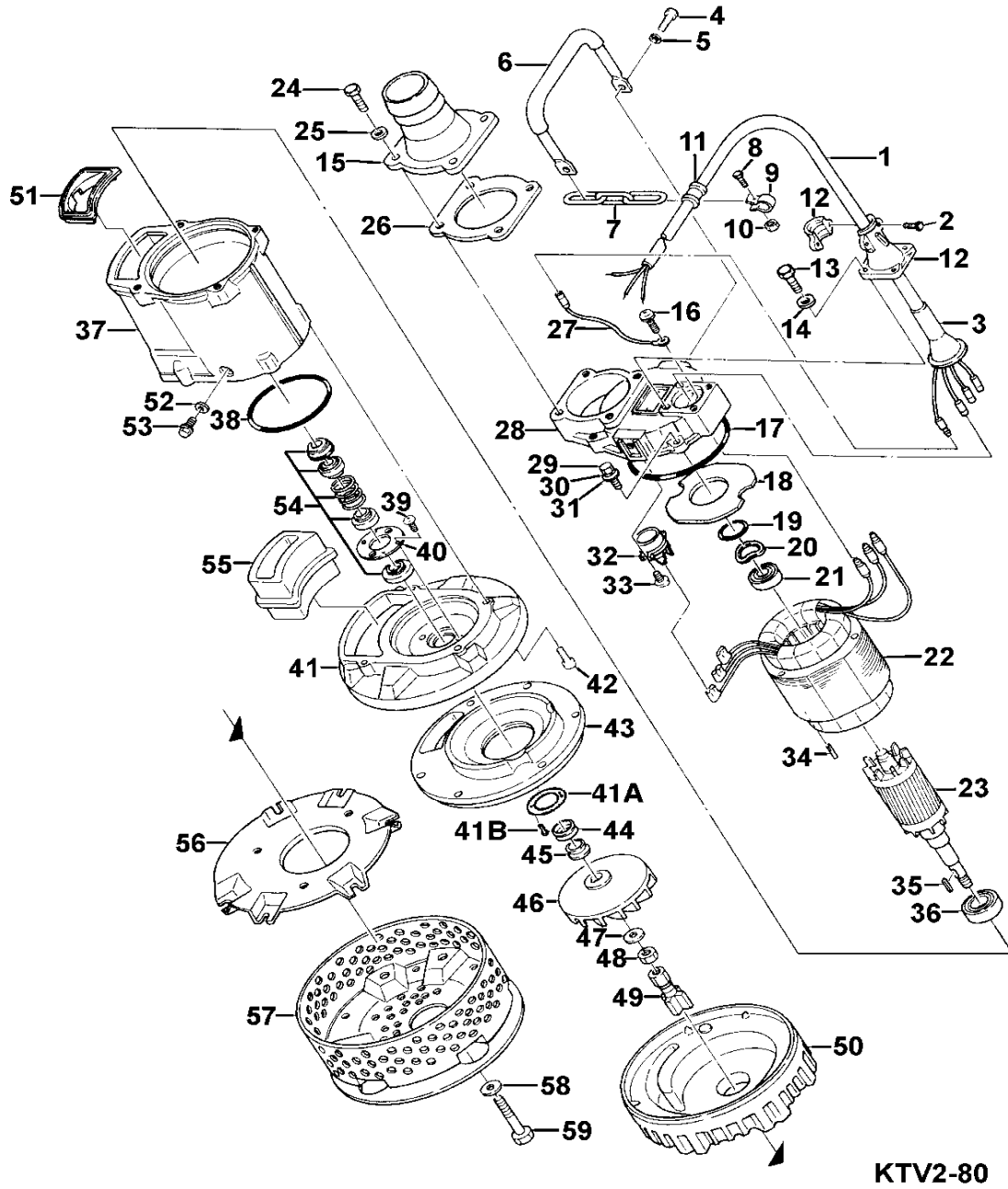


Exploded View and Spare Parts for Tsurumi KTV2-80



Freephone 0800 092 4423

Tsurumi KTV2-80

Issued January 2013

Item	Description	Item no.	List Price
1	Cabtyre Cable Set (20m) 400/415V-50HZ(EUR) H07RN4Cx1.5mm ² (CEE,G	001-004-97	£ 268.00
1	Cabtyre Cable Set (20m) H07RN-F4Cx2,5mm ²	001-TEG-01	£ 114.70
2	Hex.Bolt M6x16 SUS304 (EN X5CrNi18-10) Stainless Steel	140-033-12	£ 0.60
3	Mould Cover No.1-9 CR	008-133-10	£ 10.00
4	Hex.Bolt M10x20 SUS304 (EN X5CrNi18-10) Stainless Steel	140-074-15	£ 2.30
5	Spring Washer M10 SUS304 (EN X5CrNi18-10) Stainless Steel	142-164-19	£ 0.60
6	Handle KTV2-80 (SPG + NBR)	068-249-16	£ -
7	Chain d4(3-Link) SS	095-131-18	£ 1.90
8	Hex.Bolt M6x15 SUS304 (EN X5CrNi18-10) Stainless Steel	140-032-11	£ 0.60
9	Cable Clip No.2-1 SPC	010-120-18	£ 6.20
10	Hex. Nut M6 SUS304 (EN X5CrNi18-10) Stainless Steel	141-004-17	£ 0.40
11	Cable Clip Rubber No.3 NBR	010-124-15	£ 1.60
12	Stuffing Box No.1-1(w/Clamp) ADC	003-122-24	£ 25.60
13	Hex.Bolt M8x25(B=12) SUS304 (EN X5CrNi18-10) Stainless Steel	140-418-15	£ 1.40
14	Plain Washer d8.6xd13.4x1t SUS304 (EN X5CrNi18-10) Stainless Steel	142-210-11	£ 1.00
15	Hose Coupling 80mm(37M) ADC	032-118-27	£ 41.80
15	BS-Coupling (outside thread) 80mm (GH)	032-437-12	£ -
16	Pan Screw (w/spring washer /plain washer) M4x6 (SWRM)	143-805-34	£ -
17	O-Ring 160xd3,5 (NBR)	122-446-16	£ -
18	Lead Wire Protection Plate d70xd140x1.6t Resin	058-117-13	£ 68.80
19	O-Ring 52xd3.1 NBR	122-367-12	£ 2.30
20	Wave Washer #6205/6304 SK-5	142-196-10	£ 3.10
21	Bearing 6304ZZC3	052-107-12	£ 17.40
22	Stator	056-725-14	£ -
22	Stator 440V/60HZ	056-726-15	£ 1,462.30
23	Rotor w/Bearing	055-667-14	£ 920.40
24	Hex.Bolt M10x30 SUS304 (EN X5CrNi18-10) Stainless Steel	140-076-17	£ 2.50
25	Plain Washer M10 SPC	142-128-24	£ 0.40
26	Packing KRB-3/4 Type NR	121-141-15	£ 4.00
27	Earth Terminal 2mm ²	009-177-19	£ 4.00
28	Motor Bracket ADC	050-403-15	£ 422.50
29	Hex.Bolt M10x35 SUS304 (EN X5CrNi18-10) Stainless Steel	140-078-19	£ 2.70
30	Spring Washer M10 SUS304 (EN X5CrNi18-10) Stainless Steel	142-164-19	£ 0.60
31	Plain Washer M10 SUS304 (EN X5CrNi18-10) Stainless Steel	142-128-11	£ 0.60
32	Motor Protector 380V-50HZ KA313-GDXL103 (H)	053-437-17	£ 193.80
32	Motor Protector 380/400/415V-50HZ KA313-GCXL103 (H)	053-438-18	£ 157.60
33	Truss Screw M4x10 SWRM	143-136-15	£ 0.40
34	Stator Set Pin d8x30 S45C	145-029-10	£ 15.40
35	Impeller Key 5x5x22l Stainless Steel	147-073-15	£ 9.60
36	Bearing 6306ZZC3	052-109-14	£ 25.20
37	Motor Frame KTV2-80 (ADC)	064-471-20	£ -
38	O-Ring G-140 NBR	122-139-13	£ 4.40
39, 40	Pan Screw M5x6 SWRM	143-070-23	£ 0.40
39, 40	Oil Lifter For H-25(A)(T) Resin	030-143-12	£ 4.80
39, 40	Pan Screw M5x6 SWRM	143-070-10	£ 0.40
39, 40	Seal Stopper For H-25(A)(T) SPCC	030-152-14	£ 5.80
41	Oil Casing KTV2-37 ADC	029-409-15	£ 165.10
41A	Protection Plate d49xd85x3t SUS304 (EN X5CrNi18-10) Stainless Steel	058-183-10	£ -
41B	Flat Screw M4x8 SUS304 (EN X5CrNi18-10) Stainless Steel	143-166-14	£ 0.60
42	Hex. Socket Cap Bolt M10x35 SSUS304 (EN X5CrNi18-10) Stainless Steel	140-288-14	£ 6.60
43	Wear Ring KTV2-37 BR+NR	031-000-09	£ 69.70
44	V-Ring VR-25 NBR	122-444-14	£ 15.40
45	Shaft Sleeve d20xd25x9l SUS304 (EN X5CrNi18-10) Stainless Steel	071-298-10	£ 29.90
46	Impeller (50HZ) 50Hz HiCrFC	021-F80-17	£ 221.10
47	Plain Washer M16 SPC	142-130-29	£ 0.60
48	Hex.Nut M16 SUS304 (EN X5CrNi18-10) Stainless Steel	141-008-11	£ 4.20
49	Stirrer KTV2-80 FCD	024-154-17	£ 80.70
50	Pump Casing (New) KTV2-37 BR+NR	020-000-36	£ 87.70
51	Packing (Water Way, Upp.) KTV2-37 NBR	121-449-16	£ 8.30
52	Packing d10.3xd16x2t PE	121-246-11	£ 0.80
53	Oil Plug M10x16(B=13) SUS304 (EN X5CrNi18-10) Stainless Steel	035-000-01	£ -

54	Mechanical Seal H-25T SiC	025-255-12	£ 280.10
55	Packing (Water Way, Low.) KTV2-37 Synthetic Rubber	121-442-19	£ 61.30
56	Fixing Plate (New) KTV2-37 SPCC	127-250-16	£ 36.60
57	Strainer Stand KTV2-80 SPCC+SGP	023-435-12	£ 349.70
58	Plain Washer M10 SPC	142-128-24	£ 0.40
59	Hex.Bolt M10x100 SUS304 (EN X5CrNi18-10) Stainless Steel	140-091-18	£ 16.10
	Packing O-Ring Set	173-473-10	£ 89.40