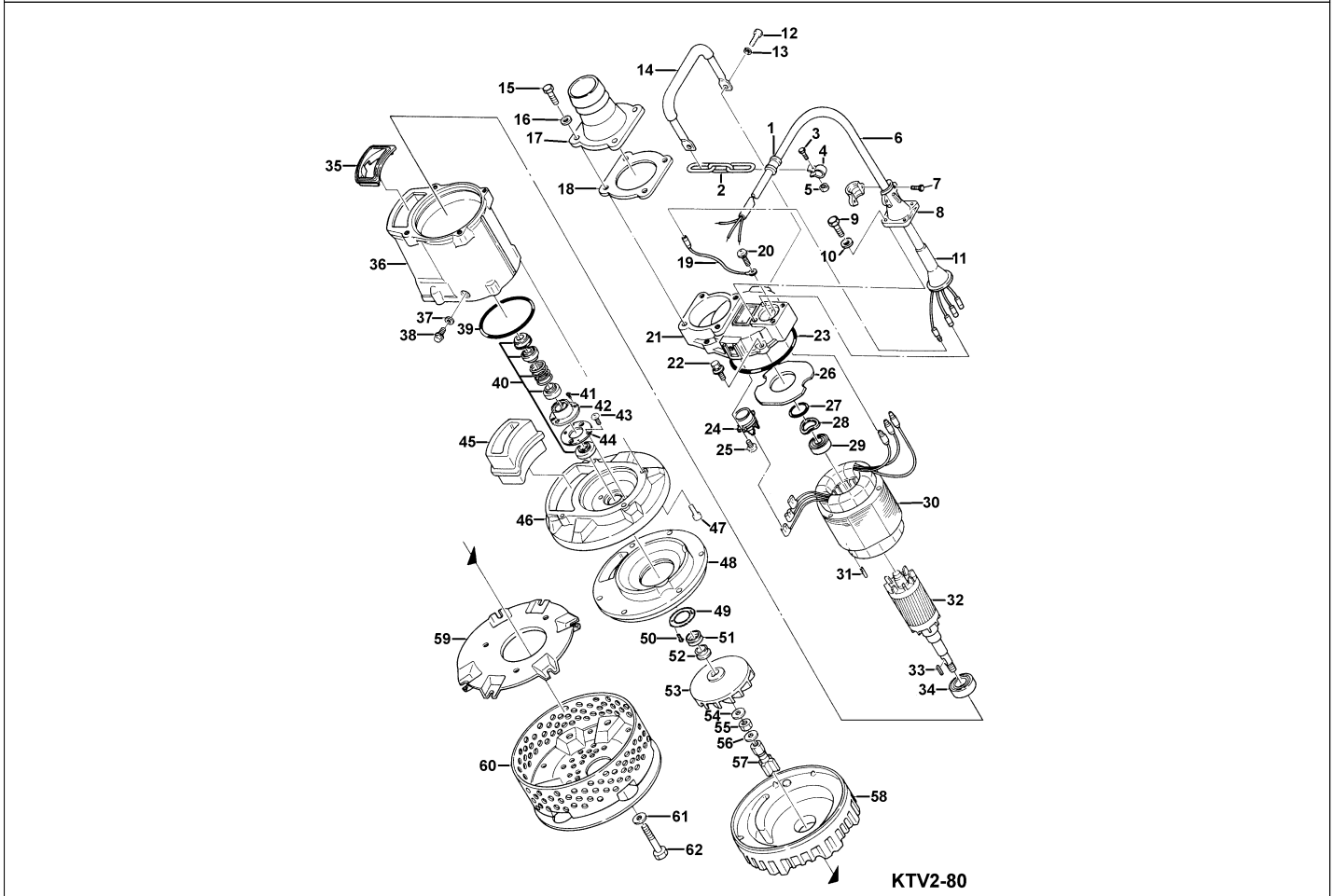


KTV2-80

Kontroll-Nr. --

2024-04-03 V.01.02.2023

Pos.no	Item no.	Description	Qty.	UP / EUR
--------	----------	-------------	------	----------


KTV2-80

1.1.1	173-473-10	Packing & O-Ring Set	1	
1	010-000-31	Cable Clip Rubber NBR	1	
2	095-000-99	Chain 4mm(3L)=29,4 SS	1	
3	140-032-11	Hex.Bolt M6x15 SUS304 (EN X5CrNi18-10) Stainless Steel	1	
4	010-120-18	Cable Clip No.2-1 SPC	1	Price on req.
5	141-004-33	Hex.Nut M6 SWRM	1	
6	001-TEG-01	Cabletyre Cable Set (20m) H07RN-F4Cx2,5mm² without stuffing box	1	
6	M01-TEG-01	Cabletyre Cable Set (20m) NSSHÖU 4Cx2,5mm²	1	
7	140-033-12	Hex.Bolt M6x16 SUS304 (EN X5CrNi18-10) Stainless Steel	2	
8	006-000-68	Stuffing Box No.1-1(w/Clamp) ADC	1	
9	140-418-15	Hex.Bolt M8x25(B=12) SUS304 (EN X5CrNi18-10) Stainless Steel	4	
10	142-210-11	Plain Washer d8.6xd13.4x1t SUS304 (EN X5CrNi18-10) Stainless Steel	4	
11	008-133-10	Mould Cover No.1-9 CR	1	
12	140-074-15	Hex.Bolt M10x20 SUS304	2	
13	142-164-19	Spring Washer M10 SUS304	2	
14	068-000-20	Handle KTV2-80 (SPG + NBR)	1	
15	140-	Hex.Bolt	4	Price on req.
16	142-128-11	Plain Washer M10 Kaltgewalztes Blech	4	
17	032-437-12	Hose Coupling (for EUR)KTV(BSPT-3) FC	1	
18	121-141-15	Packing KRB-3/4 Type NR	1	
19	009-177-19	Earth Terminal 2mm2	1	
20	143-085-34	Pan Screw (w/Spring Washer) M4x6 C3604 (EN CuZn39Pb3)	1	
21	050-403-15	Motor Bracket ADC	1	
22	140-433-16	Hex.Bolt (w/Spring Washer /Plain Washer) M10x35 EN X5CrNi18-10	4	
23	122-298-11	O-Ring 160xd3.8 NBR	1	
24	053-438-18	Motor Protector 380/400/415V-50HZ KA313-GCXL103 (H)	1	
25	143-136-15	Truss Screw M4x10 SWRM	2	
26	058-117-13	Lead Wire Protection Plate d70xd140x1.6t Resin	1	
27	122-367-12	O-Ring 52xd3.1 NBR	1	
28	142-196-10	Wave Washer 6205/6304 SK5	1	
29	052-107-12	Bearing 6304ZCC3	1	
30	056-726-15	Stator 440V/60HZ	1	
31	145-029-10	Stator Set Pin d8x30 S45C	1	
32	055-667-14	Rotor	1	
33	147-129-17	Impeller Key 5x5x22l SUS403 (EN X6Cr13)	1	
34	052-109-14	Bearing 6306ZCC3	1	
35	121-449-16	Packing (Water Way, Upp.) KTV2-37 NBR	1	
36	064-000-80	Motor Frame KTV2-80 (ADC)	1	
37	121-246-11	Packing (Oil Plug) d10.3xd16x2t PE	1	
38	035-000-01	Oil PlugM10x16(B=13) EN X5CrNi18-10	1	

KTV2-80

Kontroll-Nr. --

2024-04-03 V.01.02.2023

Pos.no	Item no.	Description	Qty.	UP / EUR
39	122-139-13	O-Ring G-140 NBR	1	
40	025-001-00	Mechanical Seal H-25T SIC	1	
41	143-070-23	Pan Screw M5x6 SWRM	2	
42	030-143-12	Oil Lifter H-25(A)(T) Resin	1	
43	143-070-23	Pan Screw M5x6 SWRM	2	
44	030-152-14	Seal Stopper H-25(A)(T) SPCC	1	
45	121-001-03	Packing (Water Way, Low.)KTV2-37 SBR	1	
46	029-000-78	Oil Casing KTV2-37 ADC	1	
47	140-288-14	Hex. Socket Cap Bolt M10x35 SUS304 (EN X5CrNi18-10) Stainless	4	
48	031-000-09	Wear Ring KTV2-37 BR+NR	1	
49	058-000-26	Fixing Plate d39xd85x3t SUS304 (EN X5CrNi18-10) Stainless Steel	1	
50	143-166-14	Flat Screw M4x8 SUS304 (EN X5CrNi18-10) Stainless Steel	2	
51	122-444-14	V-Ring VR-25 NBR	1	
52	071-298-10	Shaft Sleeve d20xd25x9l SUS304 (EN X5CrNi18-10) Stainless Steel	1	
53	021-F80-17	Impeller (50Hz) HiCrFC	1	
54	142-130-16	Plain Washer M16 SUS304 (EN X5Cr18-10)	1	
55	141-008-40	Hex.Nut M16(t=10) SUS304 (EN X5CrNi18-10) Stainless Steel	1	
56	142-166-11	Spring Washer M16 SUS304	1	
57	024-154-17	Stirrer KTV2-80 FCD	1	
58	020-000-36	Pump Casing (New) KTV2-37 BR+NR	1	
59	127-250-16	Fixing Plate (New) KTV2-37 SPCC	1	
60	023-435-12	Strainer Stand KTV2-80 SPCC+SGP	1	
61	142-128-11	Plain Washer M10 Kaltgewalztes Blech	6	
62	140-091-18	Hex.Bolt M10x100 SUS304 (EN X5CrNi18-10) Stainless Steel	6	
	#oilVG32	ml Turbine Oil ISO VG32	400	Price on req.
	173-473-10	Packing & O-Ring Set	1	