

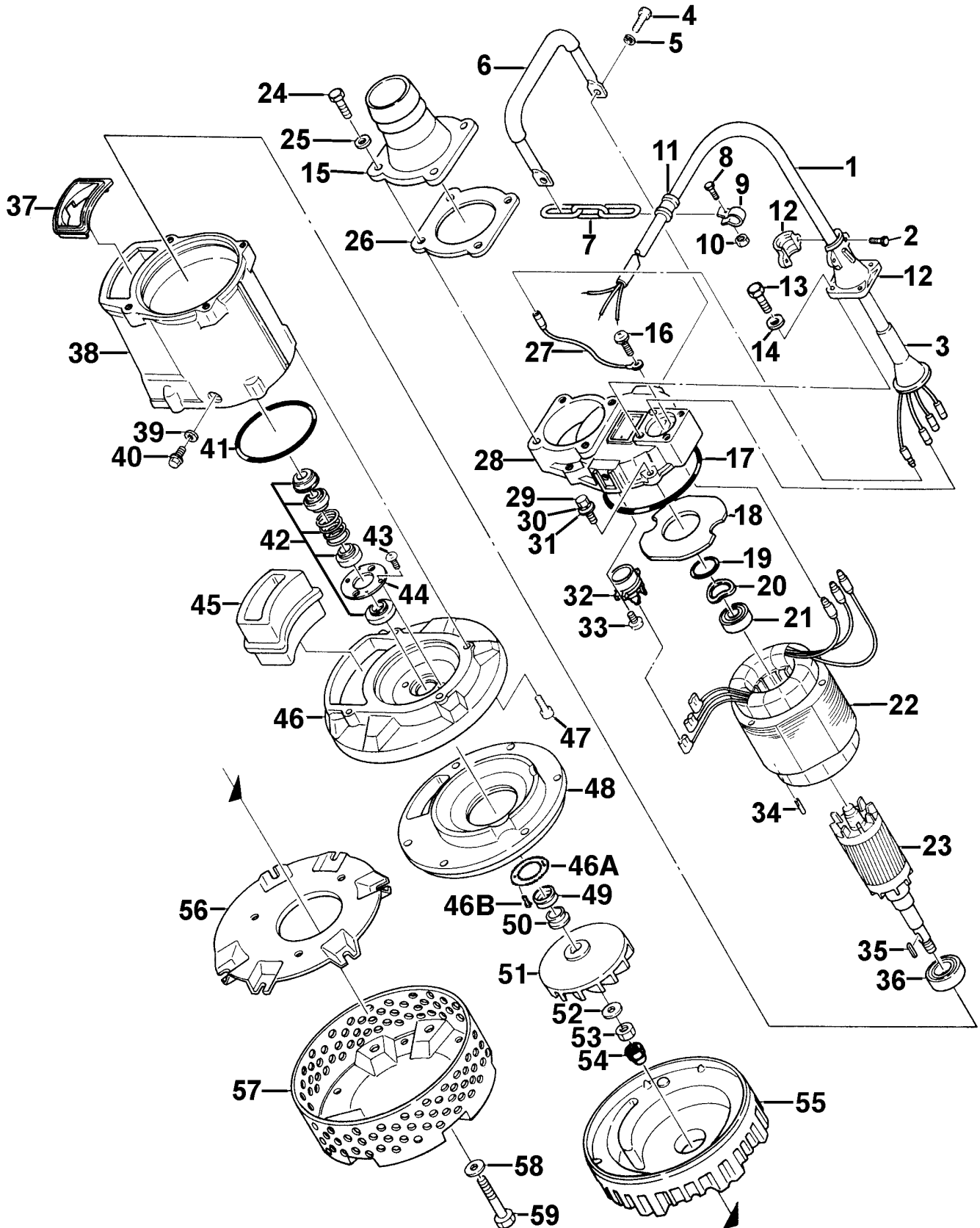
KTV2-37H

Kontroll-Nr. --

2019-03-0€ V.01.02.2019

Pos.no	Item no.	Description	Quant.	UP
		Dichtungs-Oring-Satz	1	Price on req.
1	001-TEG-01	Cabtyre Cable Set (20m) H07RN-F4Cx2,5mm ² without stuffing box	1	Price on req.
1	M01-TEG-01	Cabtyre Cable Set (20m) NSSHÖU 4Cx2,5mm ²	1	Price on req.
2	140-033-12	Hex.Bolt M6x16 SUS304 (EN X5CrNi18-10) Stainless Steel	2	Price on req.
3	008-133-10	Mould Cover No.1-9 CR	1	Price on req.
4	140-074-15	Hex.Bolt M10x20 SUS304	2	Price on req.
5	142-164-19	Spring Washer M10 SUS304	2	Price on req.
6	068-000-20	Handle KTV2-80 (SPG + NBR)	1	Price on req.
7	095-131-18	Chain 4mm(3L) SS	1	Price on req.
8	140-032-11	Hex.Bolt M6x15 SUS304 (EN X5CrNi18-10) Stainless Steel	1	Price on req.
9	010-120-18	Cable Clip No.2-1 SPC	1	Price on req.
10	141-004-17	Hex.Nut M6 SUS304	1	Price on req.
11	010-124-15	Cable Clip Rubber No.3 NBR	1	Price on req.
12	003-122-24	Stuffing Box No.1-1(w/Clamp) ADC	1	Price on req.
13	140-418-15	Hex.Bolt M8x25(B=12) SUS304 (EN X5CrNi18-10) Stainless Steel	4	Price on req.
14	142-210-11	Plain Washer d8.6xd13.4x1t SUS304 (EN X5CrNi18-10) Stainless Steel	4	Price on req.
15	032-151-19	Hose Coupling 50mm(GH Type) ADC	1	Price on req.
15	032-436-11	Hose Coupling (for EUR)KTV(BSPT-2) FC	1	Price on req.
16	143-085-34	Pan Screw (w/Spring Washer) M4x6 C3804 (EN CuZn39Pb3)	1	Price on req.
17	122-298-11	O-Ring 160xd3.8 NBR	1	Price on req.
18	058-117-13	Lead Wire Protection Plate d70xd140x1.6t Resin	1	Price on req.
19	122-367-12	O-Ring 52xd3.1 NBR	1	Price on req.
20	142-196-10	Wave Washer 6205/6304 SK5	1	Price on req.
21	052-107-12	Bearing 6304ZZC3	1	Price on req.
22	056-725-14	Stator 380V-50Hz	1	Price on req.
22	056-726-15	Stator 440V/60HZ	1	Price on req.
23	055-667-14	Rotor w/Bearing	1	Price on req.
24	140-078-19	Hex.Bolt M10x30 SUS304	4	Price on req.
25	142-128-11	Plain Washer M10 Kaltgewalztes Blech	4	Price on req.
26	121-141-15	Packing KRB-3/4 Type NR	1	Price on req.
27	009-177-19	Earth Terminal 2mm2	1	Price on req.
28	050-403-15	Motor Bracket ADC	1	Price on req.
29	140-078-19	Hex.Bolt M10x30 SUS304	4	Price on req.
30	142-164-19	Spring Washer M10 SUS304	4	Price on req.
31	142-128-11	Plain Washer M10 Kaltgewalztes Blech	4	Price on req.
32	053-438-18	Motor Protector 380/400/415V-50HZ KA313-GCXL103 (H)	1	Price on req.
33	143-136-15	Truss Screw M4x10 SWRM	2	Price on req.
34	145-029-10	Stator Set Pin d8x30 S45C	1	Price on req.
35	147-073-15	Impeller Key 5x5x22l Stainless Steel	1	Price on req.
36	052-109-14	Bearing 6306ZZC3	1	Price on req.
37	121-449-16	Packing (Water Way, Upp.) KTV2-37 NBR	1	Price on req.
38	064-000-80	Motor Frame KTV2-80 (ADC)	1	Price on req.
39	121-246-11	Packing (Oil Plug) d10.3xd16x2l PE	1	Price on req.
40	035-000-01	Oil PlugM10x16(B=13) EN X5CrNi18-10	1	Price on req.
41	122-139-13	O-Ring G-140 NBR	1	Price on req.
42	025-001-00	Mechanical Seal H-25T SIC	1	Price on req.
43, 44	143-070-23	Pan Screw M5x6 SWRM	2	Price on req.
43, 44	030-143-12	Oil Lifter H-25(A)(T) Resin	1	Price on req.
43, 44	143-070-10	Pan Screw M5x6 SWRM	2	Price on req.
43, 44	030-152-14	Seal Stopper H-25(A)(T) SPCC	1	Price on req.
45	121-001-03	Packing (Water Way, Low.)KTV2-37 SBR	1	Price on req.
46	029-000-78	Oil Casing KTV2-37 ADC	1	Price on req.
46A	058-000-26	Fixing Plate d39xd85x3t SUS304 (EN X5CrNi18-10) Stainless Steel	1	Price on req.
46B	143-166-14	Flat Screw M4x8 SUS304 (EN X5CrNi18-10) Stainless Steel	2	Price on req.
47	140-288-14	Hex.Socket Cap Bolt M10x35 SUS304	4	Price on req.
48	031-000-09	Wear Ring KTV2-37 BR+NR	1	Price on req.
49	122-444-14	V-Ring VR-25 NBR	1	Price on req.
50	071-298-10	Shaft Sleeve d20xd25x9l SUS304 (EN X5CrNi18-10) Stainless Steel	1	Price on req.
51	021-G21-11	Impeller (50HZ) 50Hz FCD	1	Price on req.
52	142-130-29	Plain Washer M16 SPC	1	Price on req.
53	141-008-11	Hex.Nut M16 SUS304 (EN X5CrNi18-10)	1	Price on req.
54	141-033-15	Hex.Cap Nut M16 SUS304 (EN X5Cr18-10)	1	Price on req.
55	020-901-31	Pump Casing (New) KTV2-37H BR+NR	1	Price on req.
56	127-250-16	Fixing Plate (New) KTV2-37 SPCC	1	Price on req.
57	023-434-11	Strainer Stand KTV2-37 SPCC	1	Price on req.
58	142-128-11	Plain Washer M10 Kaltgewalztes Blech	1	Price on req.
59	140-091-18	Hex.Bolt M10x100 SUS304 (EN X5CrNi18-10) Stainless Steel	1	Price on req.
	173-473-10	Packing & O-Ring Set	1	Price on req.
	##oilVG32	ml Turbine Oil ISO VG32	400	Price on req.

Exploded View KTV2-37H



KTV2-37H