

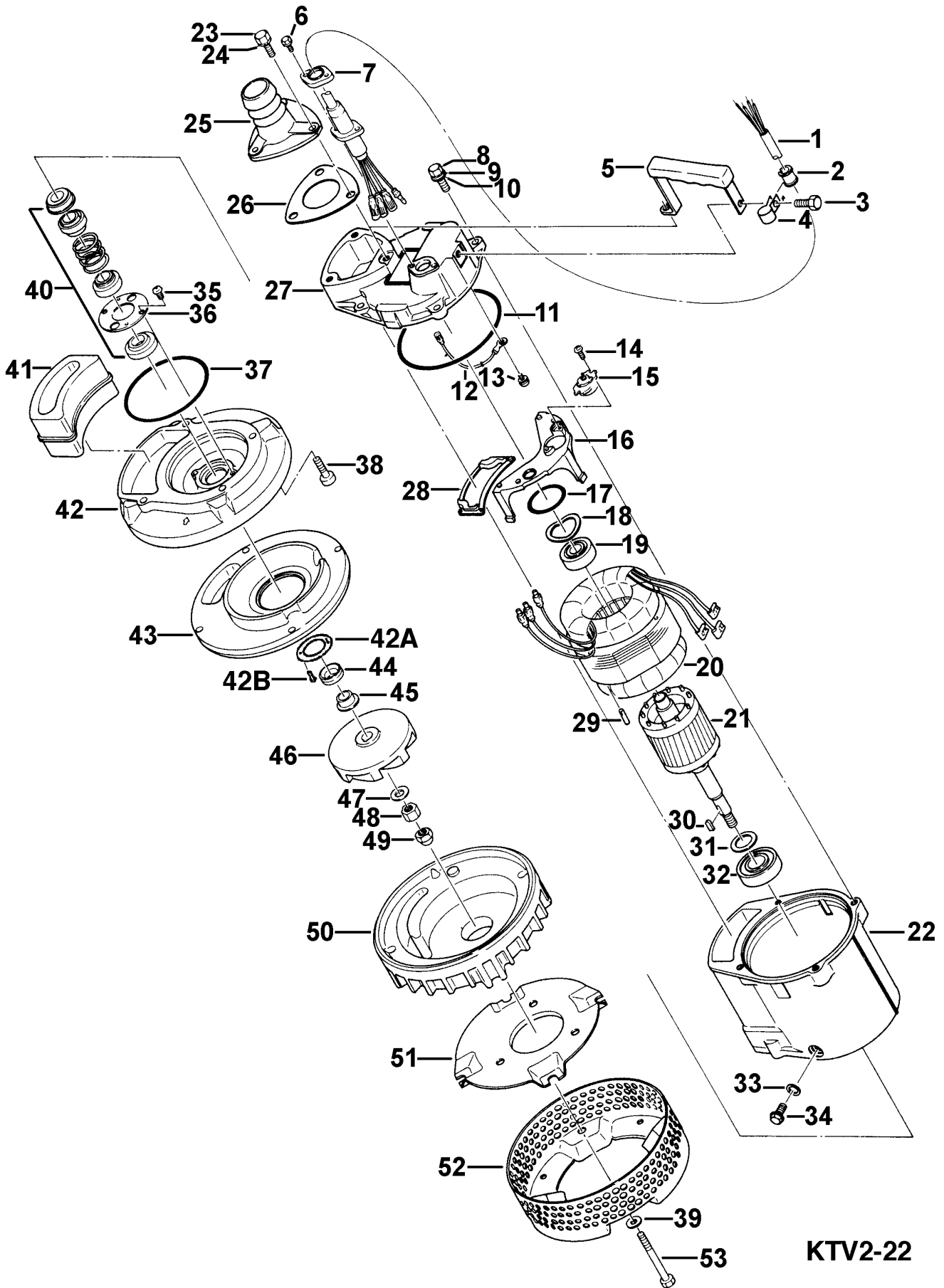
KTV2-22

Kontroll-Nr. --

2019-03-0€ V.01.02.2019

Pos.no	Item no.	Description	Quant.	UP
		Dichtungs-Oring-Satz	1	Price on req.
1	001-TEG-31	Cabtyre Cable Set (20m) H07RN-F4Cx1,5mm ² with gland	1	Price on req.
1	M01-TEG-31	Cabtyre Cable Set (20m) NSSHÖU 4Cx1,5mm ²	1	Price on req.
	061-TEG-06	Cable Repair Kit	1	Price on req.
2	010-126-17	Cable Clip Rubber HS2 NBR	1	Price on req.
3	140-054-19	Hex.Bolt M8x20 SUS304 (EN X5Cr18-10)	1	Price on req.
4	010-130-14	Cable Clip HK2-4/15 SPC	1	Price on req.
5	068-000-42	068-000-42	1	Price on req.
6	140-427-17	Hex.Bolt (w/Plain Washer) M5x15 SUS304 (EN X5CrNi18-10)	2	Price on req.
7	003-190-10	Gland SUS316 (EN X5Cr-Ni-Mo17-12-2)	1	Price on req.
8	140-057-12	Hex.Bolt M8x30 SUS304 (EN X5CrNi18-10) Stainless Steel	4	Price on req.
9	142-210-11	Plain Washer d8.6xd13.4x1t SUS304 (EN X5CrNi18-10) Stainless Steel	4	Price on req.
10	142-127-10	Plain Washer M8 SUS304 (EN X5CrNi18-10) Stainless Steel	4	Price on req.
11	122-473-12	O-Ring 150xd3.3 NBR	1	Price on req.
12	009-112-16	Earth Terminal 1.25mm ²	1	Price on req.
13	143-085-34	Pan Screw (w/Spring Washer) M4x6 C3604 (EN CuZn39Pb3)	1	Price on req.
14	143-138-17	Cross-Recessed Pan Tapping Screw M4x12 (SWCH)	2	Price on req.
15	053-411-15	Motor Protector 380/400/415V-50HZ KA313-GQXL104 (T)	1	Price on req.
16	058-167-18	Protection Plate KTV2-15/22 Resin	1	Price on req.
17	122-293-16	O-Ring 47xd3.1 NBR	1	Price on req.
18	142-195-19	Wave Washer #6204/6303 SK-5	1	Price on req.
19	052-187-16	Bearing (w/O-ring) AC-6204ZZC3	1	Price on req.
20	056-002-41	Stator 380/400/415V-50Hz	1	Price on req.
21	055-662-19	Rotor w/Bearing	1	Price on req.
22	064-000-84	Motor Frame ADC	1	Price on req.
23	140-057-12	Hex.Bolt M8x30 SUS304 (EN X5CrNi18-10) Stainless Steel	3	Price on req.
24	142-127-23	Plain Washer M8 SPC	3	Price on req.
25	032-356-16	Hose Coupling 50mm(KTV2) ADC	1	Price on req.
25	032-000-24	Hose Coupling BSPT-2 FCD	1	Price on req.
26	121-001-09	Packing KTV2-15/22 NBR	1	Price on req.
27	050-000-45	Motor Bracket ADC	1	Price on req.
28	121-445-12	Packing (Water Way, Upp.) KTV2-15/22 NBR	1	Price on req.
29	145-028-19	Stator Set Pin d6x32 S45C	1	Price on req.
30	147-128-16	Impeller Key 5x5x18.5L SUS403 (EN X6Cr13)	1	Price on req.
31	061-161-12	Bearing Collar d25.1xd36x1.6t SPC	1	Price on req.
32	052-108-13	Bearing 6305ZZC3	1	Price on req.
33	121-246-11	Packing (Oil Plug) d10.3xd16x2t PE	1	Price on req.
34	035-000-01	Oil PlugM10x16(B=13) EN X5CrNi18-10	1	Price on req.
35, 36	143-070-23	Pan Screw M5x6 SWRM	2	Price on req.
35, 36	030-144-13	Oil Lifter H-20(A)(T) Resin	1	Price on req.
35, 36	143-070-10	Pan Screw M5x6 SWRM	2	Price on req.
35, 36	030-155-17	Seal Stopper H-20(KTV2) SPCC	1	Price on req.
37	122-134-18	O-Ring G-115 NBR	1	Price on req.
38	140-270-13	Hex.Socket Cap Bolt M8x30 SUS304	4	Price on req.
39	142-127-23	Plain Washer M8 SPC	4	Price on req.
40	025-000-99	Mechanical Seal H-20T SIC	1	Price on req.
41	121-001-04	Packing (Water Way, Low.)KTV2-15/22 SBR	1	Price on req.
42	029-000-77	Oil Casing KTV2-15/22 ADC	1	Price on req.
42A	058-000-25	Protection Plate d44xd70x3t SUS304 (EN X5CrNi18-10) Stainless Steel	1	Price on req.
42B	143-166-14	Flat Screw M4x8 SUS304 (EN X5CrNi18-10) Stainless Steel	1	Price on req.
43	031-000-08	Wear Ring KTV2-15/22 BR+NR	1	Price on req.
44	122-443-13	V-Ring VR-20 NBR	1	Price on req.
45	071-297-19	Shaft Sleeve d16xd20x10t SUS304	1	Price on req.
46	021-F74-18	Impeller (50HZ) 50Hz FCD	1	Price on req.
47	142-129-25	Plain Washer M12 SPC	1	Price on req.
48	141-007-10	Hex.Nut M12 SUS304	1	Price on req.
49	141-032-14	Hex.Cap Nut M12 SUS304	1	Price on req.
50	020-B19-18	Pump Casing (New) KTV2-15/22 BR+NR	1	Price on req.
51	127-249-12	Fixing Plate (New) KTV2-15/22 SPCC	1	Price on req.
52	023-432-19	Strainer Stand KTV2-15/22 SPCC	1	Price on req.
53	140-067-15	Hex.Bolt M8x85 SUS304 (EN X5CrNi18-10) Stainless Steel	4	Price on req.
	173-472-19	Packing & O-Ring Set	1	Price on req.
	##oilVG32	ml Turbine Oil ISO VG32	270	Price on req.

Exploded View KTV2-22



KTV2-22