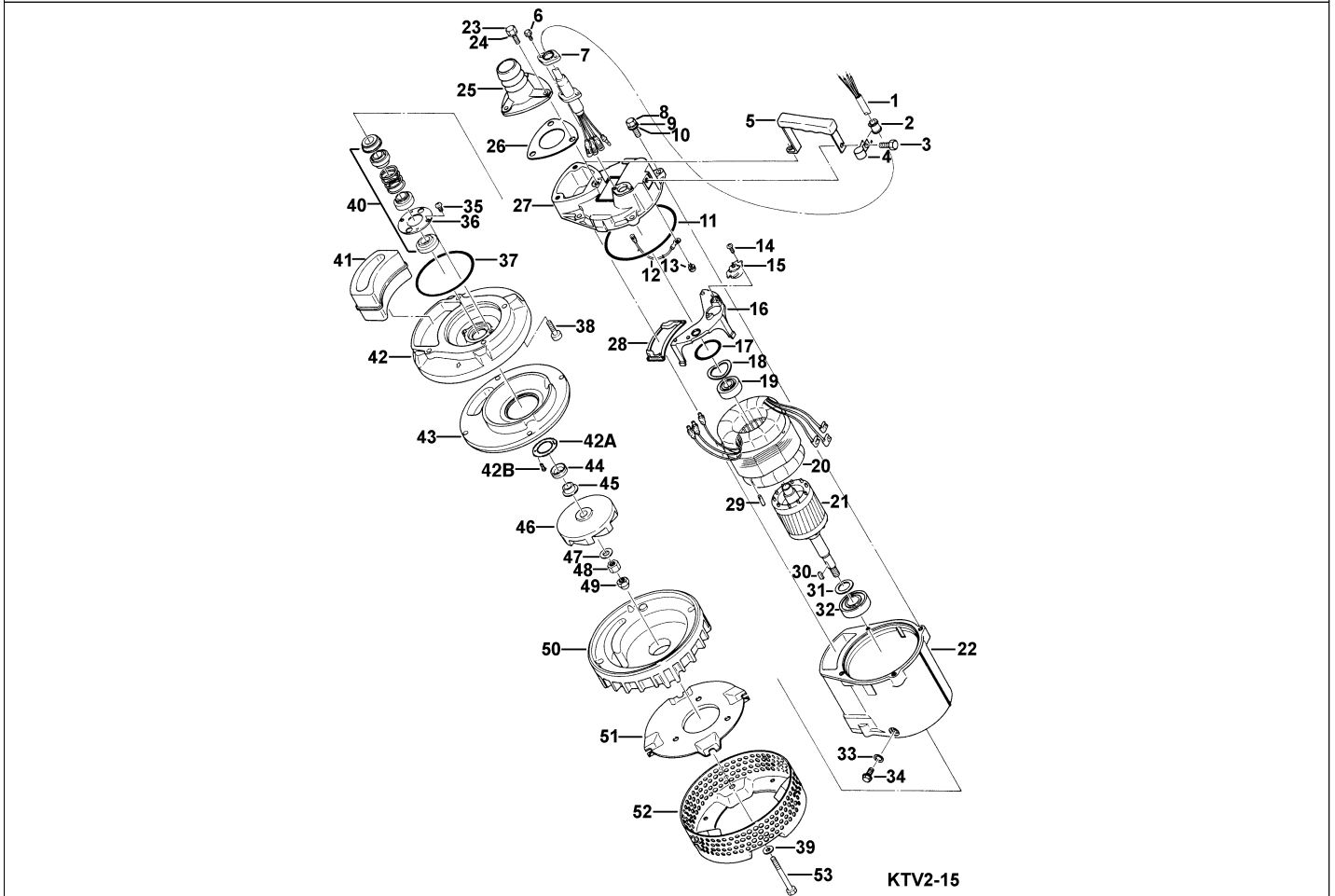


KTV2-15

Kontroll-Nr. --

2024-04-03 V.01.02.2023

Pos.no	Item no.	Description	Qty.	UP / EUR
--------	----------	-------------	------	----------



Pos.no	Item no.	Description	Qty.	UP / EUR
1.1.1	173-472-19	Packing & O-Ring Set	1	
1	001-TEG-31	Cabletyre Cable Set (20m) H07RN-F4Cx1,5mm ² with gland	1	
1	M01-TEG-31	Cabletyre Cable Set (20m) NSSHOU 4Cx1,5mm ²	1	
	061-TEG-06	Cable Repair Kit	1	
2	010-126-17	Cable Clip Rubber HS2 NBR	1	
3	140-054-19	Hex.Bolt M8x20 SUS304 (EN X5Cr18-10)	1	
4	010-130-14	Cable Clip HK2-4/15 SPC	1	
5	068-000-43	068-000-43	1	
6	140-427-17	Hex.Bolt (w/Plain Washer) M5x15 SUS304 (EN X5CrNi18-10)	2	
7	003-190-10	Gland SUS316 (EN X5Cr-Ni-Mo17-12-2)	1	
8	140-057-12	Hex.Bolt M8x30 SUS304 (EN X5CrNi18-10) Stainless Steel	4	
9	142-210-11	Plain Washer d8.6xd13.4x1t SUS304 (EN X5CrNi18-10) Stainless Steel	4	
10	142-127-10	Plain Washer M8 SUS304 (EN X5CrNi18-10) Stainless Steel	4	
11	122-473-12	O-Ring 150xd3.3 NBR	1	
12	009-206-18	Earth Terminal 1.25mm2x115l	1	Price on req.
13	143-085-34	Pan Screw (w/Spring Washer) M4x6 C3604 (EN CuZn39Pb3)	1	
14	143-138-17	Cross-Recessed Pan Tapping Screw M4x12 (SWCH)	2	
15	053-272-12	Motor Protector 220V-50HZ KA311-DAXL78 (T)	1	
16	058-167-18	Protection Plate KTV2-15/22 Resin	1	
17	122-293-16	O-Ring 47xd3.1 NBR	1	
18	142-195-19	Wave Washer #6204/6303 SK-5	1	
19	052-187-16	Bearing (w/O-ring) AC-6204ZZC3	1	
20	056-722-11	Stator 440V/60HZ	1	
21	055-661-18	Rotor	1	
22	064-000-84	Motor Frame ADC	1	
23	140-057-12	Hex.Bolt M8x30 SUS304 (EN X5CrNi18-10) Stainless Steel	3	
24	142-127-23	Plain Washer M8 SPC	3	
25	032-356-16	Hose Coupling 50mm(KTV2) ADC	1	
25	032-000-24	Hose Coupling BSPT-2 FCD	1	
26	121-001-09	Packing KTV2-15/22 NBR	1	
27	050-000-43	Motor Bracket ADC	1	
28	121-445-12	Packing (Water Wav. Upp.) KTV2-15/22 NBR	1	
29	145-028-19	Stator Set Pin d6x32 S45C	1	
30	147-128-16	Impeller Key 5x5x18.5L SUS403 (EN X6Cr13)	1	
31	061-161-12	Bearing Collar d25.1xd36x1.6t SPC	1	
32	052-108-13	Bearing 6305ZZC3	1	
33	121-246-11	Packing (Oil Plug) d10.3xd16x2t PE	1	
34	035-000-01	Oil PlugM10x16(B=13) EN X5CrNi18-10	1	
35, 36	143-070-23	Pan Screw M5x6 SWRM	4	
35, 36	030-144-13	Oil Lifter H-20(A)(T) Resin	1	

KTV2-15

Kontroll-Nr. --

2024-04-03 V.01.02.2023

Pos.no	Item no.	Description	Qty.	UP / EUR
35, 36	030-155-17	Seal Stopper H-20(KTV2) SPCC	1	
37	122-134-18	O-Ring G-115 NBR	1	
38	140-270-13	Hex.Socket Cap Bolt M8x30 SUS304	4	
39	142-127-23	Plain Washer M8 SPC	4	
40	025-000-99	Mechanical Seal H-20T SIC	1	
41	121-001-04	Packing (Water Way, Low.)KTV2-15/22 SBR	1	
42	029-000-77	Oil Casing KTV2-15/22 ADC	1	
42A	058-000-25	Protection Plate d44xd70x3t SUS304 (EN X5CrNi18-10) Stainless Steel	1	
42B	143-166-14	Flat Screw M4x8 SUS304 (EN X5CrNi18-10) Stainless Steel	1	
43	031-000-08	Wear Ring KTV2-15/22 BR+NR	1	
44	122-443-13	V-Ring VR-20 NBR	1	
45	071-297-19	Shaft Sleeve d16xd20x10l SUS304	1	
46	021-F72-16	Impeller (50Hz) FCD	1	
47	142-129-25	Plain Washer M12 SPC	1	
48	141-007-10	Hex.Nut M12 SUS304	1	
49	141-032-14	Hex.Cap Nut M12 SUS304	1	
50	020-B19-18	Pump Casing (New) KTV2-15/22 BR+NR	1	
51	127-249-12	Fixing Plate (New) KTV2-15/22 SPCC	1	
52	023-432-19	Strainer Stand KTV2-15/22 SPCC	1	
53	140-067-15	Hex.Bolt M8x85 SUS304 (EN X5CrNi18-10) Stainless Steel	4	
	173-472-19	Packing & O-Ring Set	1	
	##oilVG32	ml Turbine Oil ISO VG32	270	Price on req.