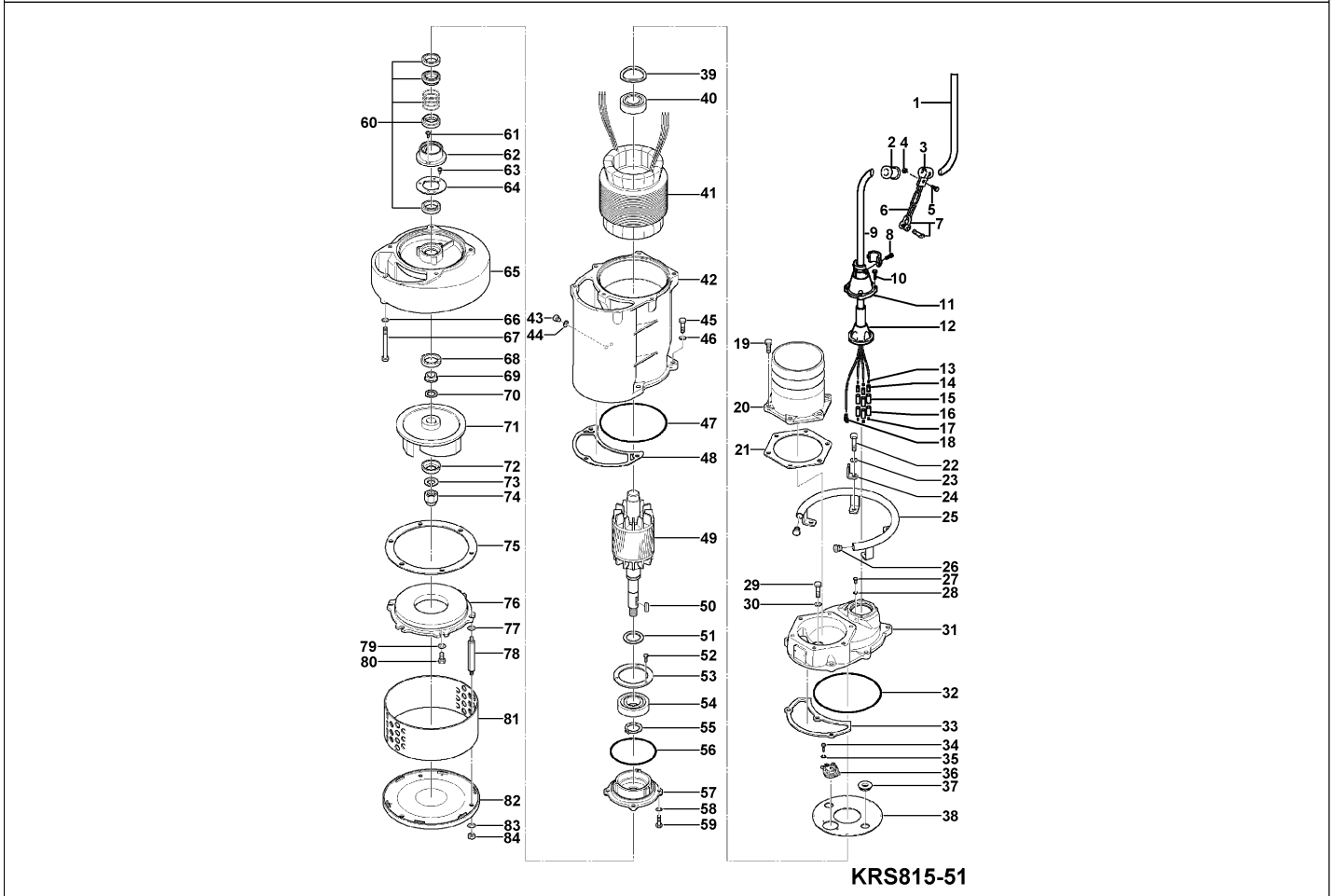


KRS815-51

Kontroll-Nr. --

2024-04-03 V.01.02.2023

Pos.no	Item no.	Description	Qty.	UP / EUR
--------	----------	-------------	------	----------



**KRS815-51**

Pos.no	Item no.	Description	Qty.	UP / EUR
1.1.1	173-003-16	Packing & O-Ring Set	1	
1	001-TEG-08	Cabletyre Cable Set (20m) H07RN-F4Cx6mm <sup>2</sup> without stuffing box	1	
1	M01-TEG-08	Cabletyre Cable Set (20m) NSSHÖU 4Cx6mm <sup>2</sup>	1	
2	010-122-10	Cable Clip Rubber No.2 NBR	1	
3	010-120-18	Cable Clip No.2-1 SPC	1	Price on req.
4	141-004-59	Hex.Nut M6 SWRM	1	
5	140-032-37	Hex.Bolt M6x15 SWRM	1	
6	095-000-95	Chain 4mm(4L)L=24 SS	1	
7	011-101-19	Shackle 6mm SS	1	
8	140-035-27	Hex.Bolt M6x20 SUS304 (EN X5CrNi18-10) Stainless Steel	2	
9	070-107-18	Cable Clamp FC	1	
10	140-055-23	Hex.Bolt M8x25 SUS410	4	
11	006-127-15	Stuffing Box 380/400/415V-50Hz(EUR,NSU) No.3 FC	1	
12	008-151-14	Mould Cover KR3-13 CR	1	
13	009-123-10	Terminal (EUR,NSU) P-5,5 CU	3	
14	009-101-12	Terminal(C/W Screw) d12x(d6.6xd6.6)x25l C3604	6	
15	002-129-15	Heat Shrink Tube (Sold per meter) EVA(d14x1t) (Vm)	1	
16	002-132-11	Heat Shrink Tube (Sold per meter) A4(d17x0.27t) (Vm)	1	
17	009-129-16	Terminal E (Small) CU	6	
18	009-131-11	Terminal 380V-50Hz R-5.5-6 CU	7	
19	140-098-15	Hex.Bolt M12x35 SUS304	6	
20	032-141-29	Hose Coupling 200mm(KRS) FC	1	
21	121-144-18	Packing KRZ8(P.C.236xd190) NBR	1	
22	140-102-13	Hex.Bolt M12x55 SUS304	4	
23	142-165-10	Spring Washer M12 SUS304 (EN X5CrNi18-10) Stainless Steel	4	Price on req.
24	070-000-65	L-Shape Fitting KRS815-51/61 SS	1	
25	068-000-37	Handle KRS815-51/61 SGP+SS	1	
26	016-000-10	Handle Rubber	2	
27	143-042-13	Pan Screw M6x10 SWRM	1	
28	142-162-33	Spring Washer M6 SWRH	1	
29	140-100-11	Hex.Bolt M12x45 SUS304 (EN X5CrNi18-10) Stainless Steel	3	Price on req.
30	142-165-10	Spring Washer M12 SUS304 (EN X5CrNi18-10) Stainless Steel	3	Price on req.
31	050-001-07	Motor Bracket FC	1	
32	122-158-18	O-Ring G-270(269.3xd5.7) NBR	1	
33	121-001-43	Packing (Water Wav. Upp.) KRS815-51/61 SBR	1	
34	143-017-19	Pan Screw M4x14 SWRM	2	Price on req.
35	142-111-24	Plain Washer M4(D=8) SPC	2	Price on req.
36	053-401-12	Motor Protector 380/400/415V-50HZ KA315-JEAL00 (B.C)	1	
37	016-000-04	Lead Wire Protection Bush d21xd52x11t SBR	2	
38	058-000-37	Lead Wire Protection Plate d110xd270x1t SPCC	1	

**KRS815-51**

Kontroll-Nr. --

2024-04-03 V.01.02.2023

Pos.no	Item no.	Description	Qty.	UP / EUR
39	142-000-70	Wave Washer d83xd99x0.9t SK5	1	
40	052-001-08	Bearing 6309ZZC3	1	
41	056-012-71	Stator	1	Price on req.
42	064-002-03	Motor Frame FC	1	
43	035-113-18	Oil Plug M12x14 SUS304 (EN X5CrNi18-10) Stainless Steel	2	Price on req.
44	121-247-12	Packing d12.3xd18x2t PE	2	
45	140-100-11	Hex.Bolt M12x45 SUS304 (EN X5CrNi18-10) Stainless Steel	4	Price on req.
46	142-165-10	Spring Washer M12 SUS304 (EN X5CrNi18-10) Stainless Steel	4	Price on req.
47	122-156-16	O-Ring G-250(249.3xd5.7) NBR	1	
48	121-131-12	Packing (Water Way, Low.) KRS-8L NBR	1	
49	055-004-71	055-004-71	1	
50	147-031-11	Impeller Key 10x8x45L SUS420	1	
51	061-000-16	Slinger d55xd75x3t SPCC	1	
52	140-054-48	Hex.Bolt M8x20 SWRM	3	
53	062-000-23	Bearing Fixing Plate 6312(d105xd155x4.5t) SS	1	
54	052-131-15	Bearing 6311ZZC3	1	
55	146-031-18	Retaining Ring C55 SK5	1	
56	122-145-12	O-Ring G-170(169.3xd5.7) NBR	1	
57	060-001-73	Bearing Housing FC	1	
58	142-164-35	Spring Washer M10 SWRH	4	Price on req.
59	140-076-33	Hex.Bolt M10x30 SWRM	4	
60	025-001-13	Mechanical Seal H-40X(E) SIC	1	
61	143-070-23	Pan Screw M5x6 SWRM	2	
62	030-141-10	Oil Lifter H-40(T) Resin	1	
63	143-070-23	Pan Screw M5x6 SWRM	3	
64	030-149-18	Seal Stopper H-40/45 SPCC	1	
65	020-414-16	Pump Casing KRS-8L FC	1	
66	142-165-10	Spring Washer M12 SUS304 (EN X5CrNi18-10) Stainless Steel	1	Price on req.
67	140-116-10	Hex.Bolt M12x140 SUS304	1	
68	026-111-18	Oil Seal TC-456812 NBR	1	
69	071-131-30	Shaft Sleeve KRS-8L SUS403	1	
70	040-122-16	Impeller Shim d35.2xd45.2x0.3t SUS304	2	
71	021-568-22	Impeller (50Hz) KRS815-51 FCD	1	
72	047-107-16	Impeller Thread Protect.Cover No.6(33) SPC	1	
73	142-171-19	Spring Washer M30 SUS304	1	
74	157-010-15	Impeller Nut M30,P3.5(B=41,Hex.Cap Nut) S35C	1	
75	120-105-14	Packing (S.Cover) d291xd348x0.5t PE	2	
76	022-380-21	Suction Cover KRS-D6 FC	1	
77	142-129-25	Plain Washer M12 SPC	3	
78	144-125-27	Stud Bolt M12x182(20/30) SUS403	3	
79	142-129-25	Plain Washer M12 SPC	3	
80	140-097-14	Hex.Bolt M12x30 SUS304	3	
81	023-244-12	Strainer KRS-8L SPC	1	
82	049-135-19	Bottom Plate KRS-8L FCMB	1	
83	142-129-25	Plain Washer M12 SPC	3	
84	141-007-10	Hex.Nut M12 SUS304	3	
	173-003-16	Packing & O-Ring Set	1	
	##oilVG32	ml Turbine Oil ISO VG32	3200	Price on req.