

KRS2-100

Kontroll-Nr. --

2019-02-2C V.01.02.2019

Pos.no	Item no.	Description	Quant.	UP
		Dichtungs-Oring-Satz	1	Price on req.
1	001-TEG-09	Cabtyre Cable Set (20m) H07RN-F4Cx2,5mm ² without stuffing box	1	Price on req.
	M01-TEG-09	Cabtyre Cable Set (20m) NSSHÖU 4Cx2,5mm ²	1	Price on req.
2	070-107-18	Cable Clamp FC	1	Price on req.
3	140-035-27	Hex.Bolt M6x20 SUS304 (EN X5CrNi18-10) Stainless Steel	2	Price on req.
4	006-126-14	Stuffing Box No.2 FC	1	Price on req.
5	140-055-10	Hex.Bolt M8x25 SUS304	4	Price on req.
6	008-136-13	Mould Cover KR2-1 CR	1	Price on req.
7	141-004-17	Hex.Nut M6 SUS304	1	Price on req.
8	010-120-18	Cable Clip No.2-1 SPC	1	Price on req.
9	010-122-10	Cable Clip Rubber No.2 NBR	1	Price on req.
10	011-110-11	Shackle 6mm SS	1	Price on req.
11	140-101-12	Hex.Bolt M12x50 SUS304 (EN X5CrNi18-10) Stainless Steel	4	Price on req.
12	142-165-10	Spring Washer M12 SUS304	4	Price on req.
13	095-131-18	Chain 4mm(3L) SS	1	Price on req.
14	070-103-10	L-Shape Fitting KT-55 SPC	1	Price on req.
15	140-032-11	Hex.Bolt M6x15 SUS304 (EN X5CrNi18-10) Stainless Steel	1	Price on req.
16	009-123-10	Terminal (EUR,NSU) P-5.5 CU	6	Price on req.
17	002-129-15	Heat Shrink Tube (Sold per meter) EVA(d14x1t) (Vm)	1	Price on req.
18	002-132-11	Heat Shrink Tube (Sold per meter) A4(d17x0.27t) (Vm)	1	Price on req.
19	009-101-12	Terminal(C/W Screw) d12x(d6.6xd6.6)x25l C3604	3	Price on req.
20	143-085-34	Pan Screw (w/Spring Washer) M4x6 C3604 (EN CuZn39Pb3)	1	Price on req.
21	009-130-10	Terminal R-5.5-4 CU	1	Price on req.
22	140-000-01	Hex.Bolt M10x30(B=14) SUS304 (EN X5CrNi18-10) Stainless Steel	4	Price on req.
23	041-105-16	Flange KRS-6x4 FC	1	Price on req.
24	142-165-10	Spring Washer M12 SUS304	1	Price on req.
25	050-364-13	Motor Bracket FC	1	Price on req.
26	122-250-11	O-Ring 230xd3.8 NBR	1	Price on req.
27	142-198-12	Wave Washer 6306 SK5	1	Price on req.
28	052-109-14	Bearing 6306ZZC3	1	Price on req.
29	058-120-19	Lead Wire Protection Plate d94xd220x1.6t Resin	1	Price on req.
30	055-563-19	Rotor	1	Price on req.
31	147-021-18	Impeller Key 8x8x44l Stainless Steel	1	Price on req.
32	140-000-01	Hex.Bolt M10x30(B=14) SUS304 (EN X5CrNi18-10) Stainless Steel	5	Price on req.
33	032-126-28	Hose Coupling 100mm(C4/A4) FC	1	Price on req.
33	032-438-13	Hose Coupling (for EUR)KTV(BSPT-4) FC	1	Price on req.
34	121-141-15	Packing KRB-3/4 Type NR	1	Price on req.
35	122-285-15	O-Ring 155xd3.1 NBR	1	Price on req.
36	140-100-11	Hex.Bolt M12x45 SUS304	1	Price on req.
37	068-159-18	Handle KRS-C6/A6/8S(T) SGP+SPC	1	Price on req.
38	053-241-12	Motor Protector 380/400/415V-50Hz KA313-GGXL110 (H.C)	1	Price on req.
39	142-124-20	Plain Washer M4 SPC	2	Price on req.
40	142-160-31	Spring Washer M4 SWRM	2	Price on req.
41	143-016-18	Pan Screw M4x12 SWRM	2	Price on req.
42	056-001-95	Stator 400/415V-50Hz	1	Price on req.
43	121-304-18	Packing (Water Wav. Upp.) KRS-7.5/11(T) NBR	1	Price on req.
44	140-100-11	Hex.Bolt M12x45 SUS304	4	Price on req.
45	122-311-11	O-Ring 220xd3.5 NBR	1	Price on req.
46	140-029-28	Hex.Bolt M6x10 SWRM	3	Price on req.
47	062-102-18	Bearing Cover KRS2-C6 (SPC)	1	Price on req.
48	052-112-10	Bearing 6309ZZC3	1	Price on req.
49	146-027-11	Retaining Ring C45 SK5	1	Price on req.
50	122-140-17	O-Ring G-145 NBR	1	Price on req.
51	060-221-18	Bearing Housing FC	1	Price on req.
52, 53	143-070-23	Pan Screw M5x6 SWRM	2	Price on req.
52, 53	030-156-18	Oil Lifter H-35(A)(T) Resin	1	Price on req.
52, 53	143-070-10	Pan Screw M5x6 SWRM	3	Price on req.
52, 53	030-150-12	Seal Stopper H-35(A)(T) SPCC	1	Price on req.
54	020-380-12	Pump Casing FC	1	Price on req.
55	026-123-13	Oil Seal TC-406211 NBR	1	Price on req.
56	071-128-47	Shaft Sleeve KRS-7.5/11KW SUS403 (EN X6Cr13) Stainless Steel	1	Price on req.
57	040-110-24	Impeller Shim d32.5xd58x0.3t SUS304 (EN X5CrNi18-10) Stainless Steel	1	Price on req.
58	021-572-16	Impeller 50Hz KRS2-100/60Hz KRS2-150 HiCrFC	1	Price on req.
59	064-451-11	Motor Frame FC	1	Price on req.
60	121-247-12	Packing d12.3xd18x2l PE	1	Price on req.
61	035-113-18	Oil Plug M12x14 SUS304	1	Price on req.
62	121-129-17	Packing (Water Way, Low.) KRS-7.5/11 NBR	1	Price on req.
63	140-054-48	Hex.Bolt M8x20 SWRM	4	Price on req.
64	025-000-96	Mechanical Seal H-35 SiC	1	Price on req.
65	142-165-10	Spring Washer M12 SUS304	1	Price on req.
66	140-113-17	Hex.Bolt M12x120 SUS304	1	Price on req.
67	024-126-23	Connection Rod KRS-100 FCMB	1	Price on req.
68	024-120-14	Stirrer GPN-80 HiCrFC	1	Price on req.
69	140-139-19	Hex.Bolt M16x143(B=19.) SUS304 (EN X5CrNi18-10) Stainless Steel	1	Price on req.
70	120-112-14	Packing d260xd314x0.5t PE	1	Price on req.
71	140-001-08	Hex.Bolt M8x35(B=14) SWRM	3	Price on req.
72	142-210-11	Plain Washer d8.6xd13.4x1t SUS304 (EN X5CrNi18-10) Stainless Steel	3	Price on req.
73	141-005-18	Hex.Nut M8 SUS304 (EN X5CrNi18-10)	3	Price on req.
74	142-129-25	Plain Washer M12 SPC	3	Price on req.
75	144-478-15	Stud Bolt M12x111(25/21) SUS403 (EN-X6Cr13)	3	Price on req.
76	142-165-10	Spring Washer M12 SUS304	3	Price on req.
77	141-007-10	Hex.Nut M12 SUS304	3	Price on req.
78	142-130-16	Plain Washer M16 SUS304 (EN X5Cr18-10)	1	Price on req.

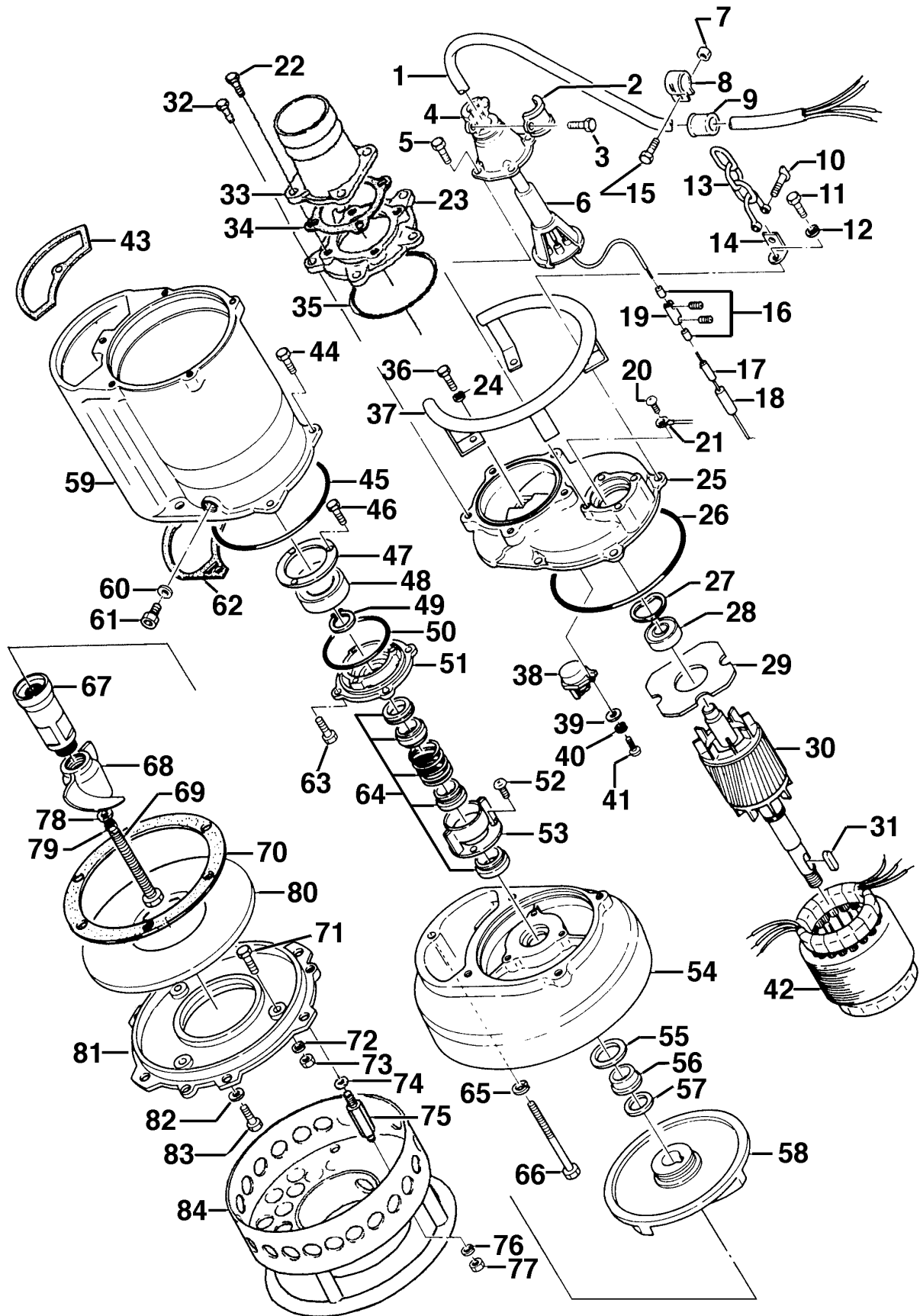
KRS2-100

Kontroll-Nr. --

2019-02-2C V.01.02.2019

Pos.no	Item no.	Description	Quant.	UP
79	141-008-40	Hex.Nut M16(t=10) SUS304 (EN X5CrNi18-10) Stainless Steel	1	Price on req.
80	033-110-19	Wear Plate 60Hz HiCrFC	1	Price on req.
81	022-420-24	Suction Cover FC	1	Price on req.
82	142-129-25	Plain Washer M12 SPC	3	Price on req.
83	140-097-14	Hex.Bolt M12x30 SUS304	3	Price on req.
84	023-241-19	Strainer Stand SPC+SGP	1	Price on req.
	173-439-14	Packing & O-Ring Set	1	Price on req.
	##oilVG32	ml Turbine Oil ISO VG32	2300	Price on req.

Exploded View KRS2-100



KRS2-100