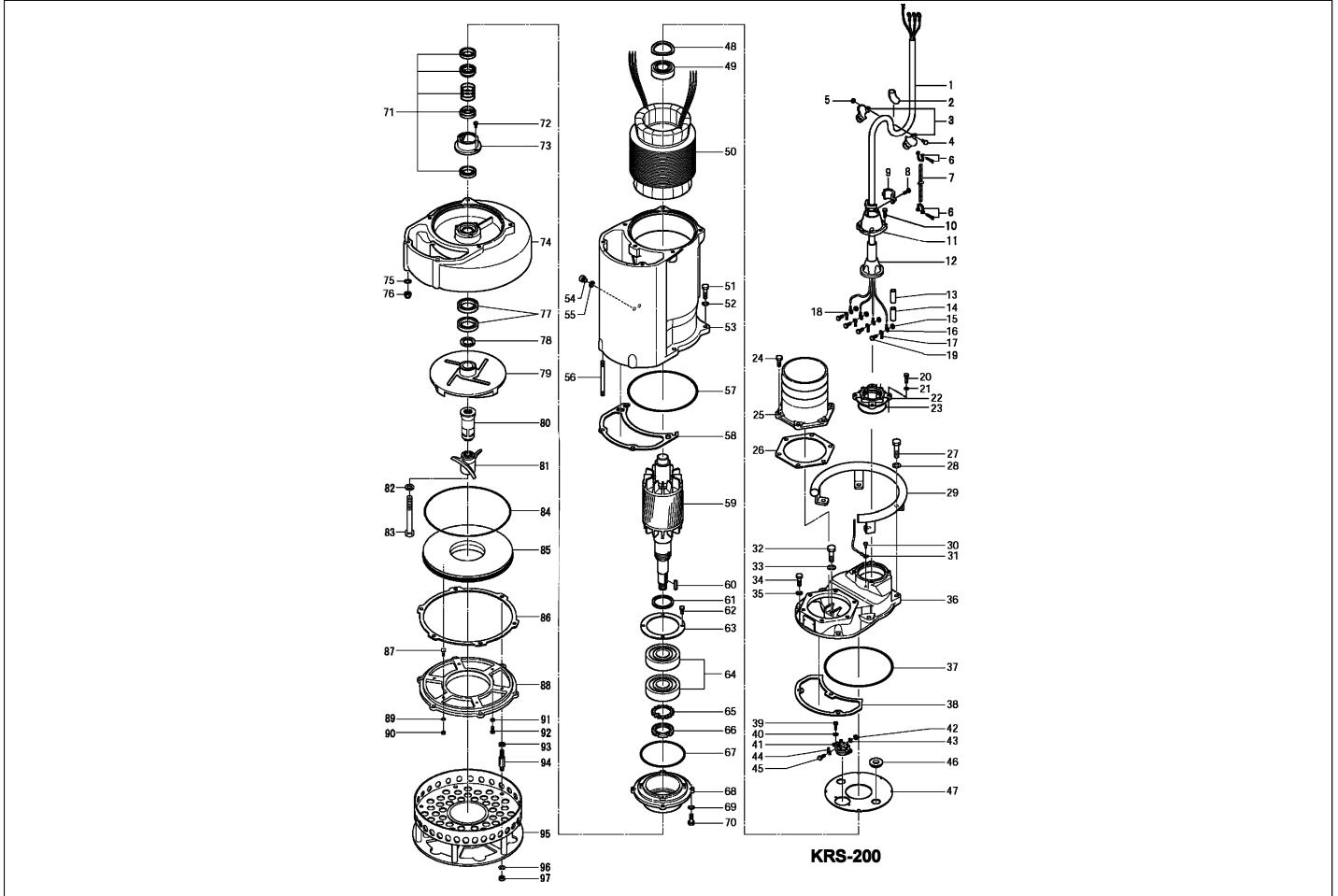


**KRS-200**

Kontroll-Nr. --

2024-04-03 V.01.02.2023

Pos.no	Item no.	Description	Qty.	UP / EUR
--------	----------	-------------	------	----------



1.1.1	173-	Packing & O-Ring Set	1	
1	M01-TEG-37	Cabletyre Cable Set (20m) NSSHÖU 4Cx10mm <sup>2</sup>	1	
2	010-128-19	Cable Clip Rubber 75x80x2t NBR	1	
3	010-101-16	Cable Clip No.3 SPC	2	
4	140-035-14	Hex.Bolt M6x20 SUS304 (EN X5CrNi18-10) Stainless	3	
5	141-004-17	Hex. Nut M6 SUS304 SUS304 (EN X5CrNi18-10) Stainless	3	
6	011-101-19	Shackle 6mm SS	1	
7	095-132-19	Chain 4mm SS	1	
8	140-035-14	Hex.Bolt M6x20 SUS304 (EN X5CrNi18-10) Stainless	2	
9	070-107-18	Cable Clamp FC	1	
10	140-055-10	Hex.Bolt M8x25 SUS304	4	
11	006-127-15	Stuffing Box 380/400/415V-50Hz(EUR,NSU) No.3 FC	1	
12	008-149-19	Mould Cover 380/400/415V-50Hz(EUR,NSU) KR3-11 CR	1	
12-1	007-105-10	Gasket No. 3	1	Price on req.
13	002-000-18	Heat Shrink Tube (Sold per meter) W3F2(3/4IN) (V/m)	1	Price on req.
14	200-000-23	Electrical tape(30M) 540S(0.18T-30Wx30M)	1	Price on req.
15	141-004-59	Hex.Nut M6 SWRM	4	
16	009-106-17	Terminal(EUR,NSU) R-8-6 CU	3	
17	009-107-18	Terminal R-14-6 CU	3	
18	009-106-17	Terminal(EUR,NSU) R-8-6 CU	2	
19	140-029-28	Hex.Bolt M6x10 SWRM	4	Price on req.
20	140-076-17	Hex.Bolt M10x30 SUS304 (EN X5CrNi18-10) Stainless Steel	4	Price on req.
21	142-164-19	Spring Washer M10 SUS304	4	
22	042-106-18	Stuffing Box Sheet 11KW FC	1	
23	122-135-19	O-Ring G-120(119.4xd3.1) NBR	1	
24	140-098-15	Hex.Bolt M12x35 SUS304	6	
25	032-141-29	Hose Coupling 200mm(KRS) FC	1	
26	121-144-18	Packing KRZ8(P.C.236xd190) NBR	1	
27	140-130-10	Hex.Bolt M16x70 SUS304 (EN X5Cr18-10)	4	
28	142-166-11	Spring Washer M16 SUS304	4	
29	068-000-41	Handle KRS819/22-51/61 SGP+SS	1	
	016-000-11	Handle Rubber (Handle 2nd) KRS819/22-51/61 NR	2	Price on req.
30	143-041-12	Pan Screw M6x8 SWRM	1	
31	009-106-17	Terminal(EUR,NSU) R-8-6 CU	1	
	009-001-99	Lead Wire (for earth) 8SQ(G/Y) 240mm	1	Price on req.
32	140-127-14	Hex.Bolt M16x55 SUS304 (EN X5CrNi18-10) Stainless Steel	1	
33	142-166-11	Spring Washer M16 SUS304	1	
34	140-101-12	Hex.Bolt M12x50 SUS304 (EN X5CrNi18-10) Stainless Steel	2	
35	142-165-10	Spring Washer M12 SUS304 (EN X5CrNi18-10) Stainless Steel	2	Price on req.
36	050-001-08	Motor Bracket FC	1	

**KRS-200**

Kontroll-Nr. --

2024-04-03 V.01.02.2023

Pos.no	Item no.	Description	Qty.	UP / EUR
37	122-160-13	O-Ring (M.Bracket/M.Frame) G-290(289.3xd5.7) NBR	1	
38	121-001-44	Packing (Water Way, Upp.) KRS819/822-51/61 SBR	1	Price on req.
39	143-032-10	Pan Screw M5x16 SWRM	2	Price on req.
40	142-112-25	Plain Washer M5 SPC	2	
41	053-285-18	Motor Protector KA315-JNAL00	1	Price on req.
42	141-004-59	Hex.Nut M6 SWRM	3	
43	142-000-30	Spring Washer M6 SWRM	3	
44	009-107-18	Terminal R-14-6 CU	3	
45	140-030-35	Hex.Bolt M6x12 SWRM	3	
46	016-000-04	Lead Wire Protection Bush d21xd52x11t SBR	2	
47	058-000-38	Lead Wire Protection Plate d14xd290x1t SPCC	1	
48	142-000-70	Wave Washer d83xd99x0.9t SK5	1	
49	052-001-08	Bearing 6309ZC3	1	
50	056-	Stator	1	Price on req.
51	140-126-13	Hex.Bolt M16x50 SUS304 (EN X5CrNi18-10) Stainless Steel	4	
52	142-166-11	Spring Washer M16 SUS304	4	
53	064-001-22	Motor Frame FC	1	
54	035-113-18	Oil Plug M12x14 SUS304 (EN X5CrNi18-10) Stainless Steel	2	Price on req.
55	121-247-12	Packing d12.3xd18x2t PE	2	
56	144-000-94	Stud Bolt M12x155(18/18) SUS403	2	Price on req.
57	122-161-14	O-Ring G-300 NBR	1	
58	121-001-41	Packing (Water Way, Low.) KRS819/822-51/61 NBR	1	Price on req.
59	055-	Rotor	1	Price on req.
60	147-	Impeller Key	1	Price on req.
61	061-000-17	Slinger d90xd70x3t SPCC	1	
62	140-054-48	Hex.Bolt M8x20 SWRM	4	
63	062-000-21	Bearing Fixing Plate d130xd190x4.5t SS	1	
64	052-145-12	Bearing 6314ZD2C3	1	
65	142-247-17	Bearing Washer AW14 SPCC	1	
66	141-079-13	Bearing Nut AN14 SS	1	
67	122-151-11	O-Ring G-205 (NBR)	1	
68	060-	Bearing Housing	1	Price on req.
69	142-164-35	Spring Washer M10 SWRH	4	Price on req.
70	140-076-33	Hex.Bolt M10x30 SWRM	4	
71	025-001-17	Mechanical Seal H-50T SIC	1	
72	030-133-19	Oil Lifter H-50(T) SPCC	1	
73	143-028-13	Pan Screw M5x10 SWRM	3	
74	020-003-40	Pump Casing KRS-200 FC	1	Price on req.
75	142-165-10	Spring Washer M12 SUS304 (EN X5CrNi18-10) Stainless Steel	2	Price on req.
76	141-032-14	Hex.Cap Nut M12 SUS304	2	
77	026-117-14	Oil Seal TC-709212 NBR	1	
78	040-123-17	Impeller Shim d45.2xd59x0.3t SUS304 (EN X5CrNi18-10) Stainless Steel	1	
79	021-010-30	Impeller KRS-200 (50Hz) HiCrFC	1	Price on req.
80	024-000-05	Connection Rod GPN622-51/61 FCMB	1	
81	024-120-14	Stirrer GPN-80 HiCrFC	1	
82	140-140-13	Hex.Bolt M16x150 SUS304 (EN X5CrNi18-10)	1	
83	142-130-29	Plain Washer M16 SPC	1	
84	122-270-17	O-Ring 350xd5.7 NBR	1	
85	033-000-03	Suction Plate GPN622-51/61 HiCrFC	1	
86	120-106-15	Packing (S.Cover) d360xd390x0.5t PE	1	
87	022-002-04	Suction Cover KRS-200 FC	1	Price on req.
88	140-001-09	Square Bolt M8x40 SUS304 (EN X5CrNi18-10)	3	
89	142-163-18	Spring Washer M8 SUS304	3	
90	141-005-18	Hex.Nut M8 SUS304 (EN X5CrNi18-10)	3	
91	141-005-18	Hex.Nut M8 SUS304 (EN X5CrNi18-10)	3	
92	140-058-42	Hex.Bolt M8x40 SUS304 (EN X5CrNi18-10) Stainless Steel	3	
93	142-129-12	Plain Washer M12 SUS304	6	
94	144-000-95	Stud Bolt M12x96(32/22) SUS403	6	Price on req.
95	023-001-94	Strainer Stand KRS-200 SGP+SS	1	Price on req.
96	142-165-10	Spring Washer M12 SUS304 (EN X5CrNi18-10) Stainless Steel	6	Price on req.
97	141-007-10	Hex.Nut M12 SUS304	6	
	##oilVG32	ml Turbine Oil ISO VG32	6500	Price on req.
	173-003-72	Packing & O-Ring Set	1	