

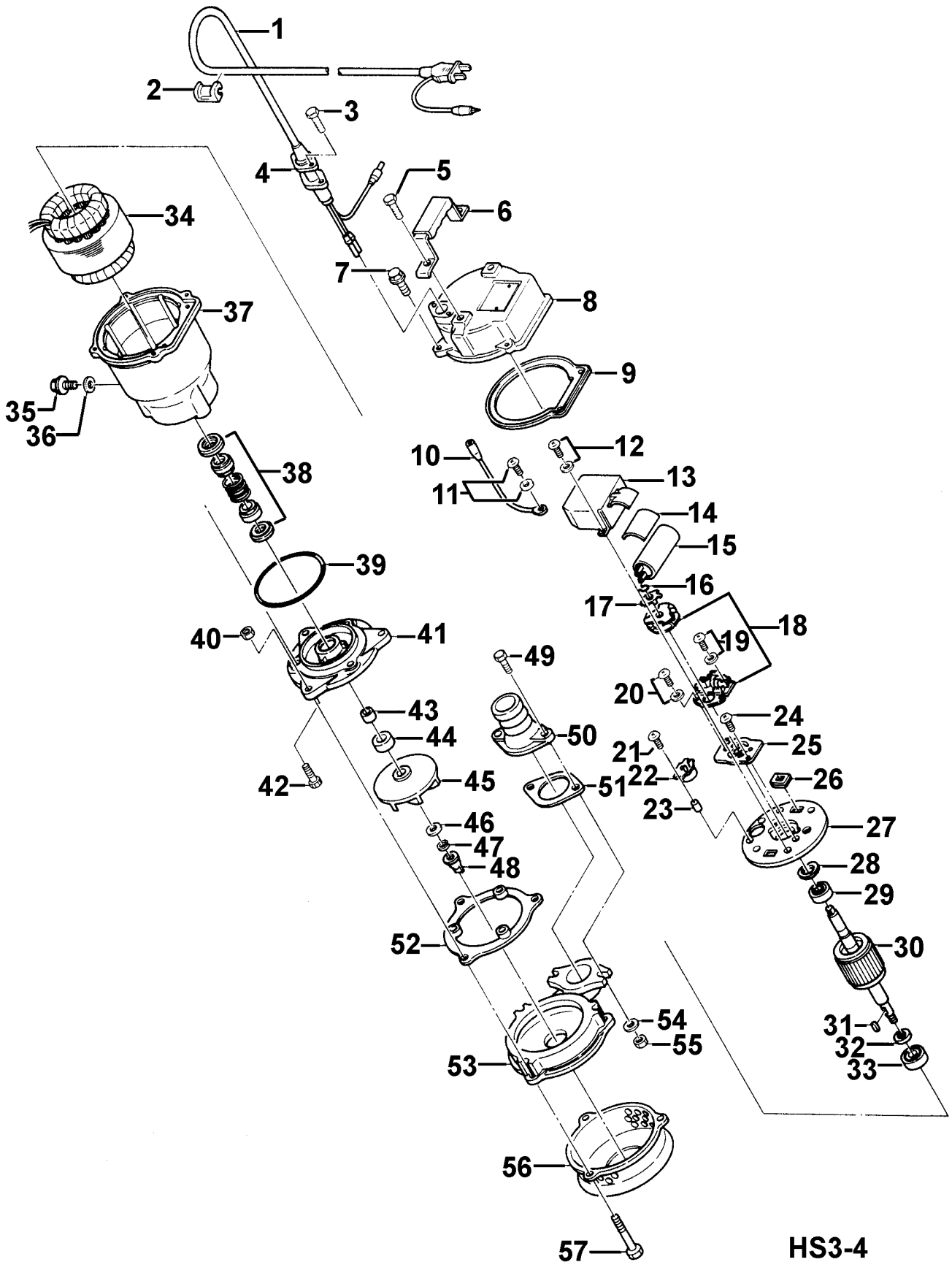
HS3-4

Kontroll-Nr. --

2019-01-28 V.20 / 1.11.2017

Pos.no	Item no.	Description	Quant.	UP
		Dichtungs-Oring-Satz	1	Price on req.
1	001-009-48	Cabletyre Cable Set (10m) 220/230/240V-50HZ(EUR) H07R-F3Cx1mm2 LBD(HAR)	1	Price on req.
2	010-134-18	Cable Clip Rubber HS3-4 NBR	1	Price on req.
2-1	010-146-13	Spacer 20x10x2t (NBR)	1	Price on req.
3	140-427-17	Hex.Bolt (w/Plain Washer) M5x15 SUS304 (EN X5CrNi18-10)	2	Price on req.
4	003-190-10	Gland SUS316 (EN X5Cr-Ni-Mo17-12-2)	1	Price on req.
5	140-033-12	Hex.Bolt M6x16 SUS304 (EN X5CrNi18-10) Stainless Steel	2	Price on req.
6	068-224-15	Handle HS3-4 SPC+NR	1	Price on req.
7	140-396-16	Hex.Bolt (w/Plain Washer) M6x20 SUS304 (EN X5CrNi18-10) Stainless Steel	4	Price on req.
8	051-207-10	Motor Head Cover ADC	1	Price on req.
9	121-371-16	Packing HS3-4 NBR	1	Price on req.
10	009-187-12	Earth Terminal 1.25mm2x150L	1	Price on req.
11	143-085-34	Pan Screw (w/Spring Washer) M4x6 C3604 (EN CuZn39Pb3)	1	Price on req.
12	143-085-34	Pan Screw (w/Spring Washer) M4x6 C3604 (EN CuZn39Pb3)	3	Price on req.
13	078-112-10	Centrifugal Switch Cover HS3-4 SPC	1	Price on req.
14	121-268-19	Rubber Sheet 35x50x3t Rubber	1	Price on req.
15	076-000-09	Capacitor 220/230/240V-50Hz 120MF-125VAC(L=60) (T)	1	Price on req.
16	145-002-17	Snap Retainer d10 SK5	1	Price on req.
17	142-207-15	Finger Spring d10.5 SK5	1	Price on req.
18	077-110-15	Centrifugal Switch MS-5-2T	1	Price on req.
19	143-076-29	Pan Screw (w/Spring Washer) M3x6 SWRM	2	Price on req.
20	143-085-34	Pan Screw (w/Spring Washer) M4x6 C3604 (EN CuZn39Pb3)	2	Price on req.
21	143-114-17	Truss Screw M4x16 SWRM	2	Price on req.
22	053-387-11	Motor Protector KA142-LAXL43 (T)	1	Price on req.
23	071-174-19	Spacer d6x6x0.5t SPC	2	Price on req.
24	143-085-34	Pan Screw (w/Spring Washer) M4x6 C3604 (EN CuZn39Pb3)	2	Price on req.
25	062-191-14	Bearing Fixing Plate HS3-4 SECC	1	Price on req.
26	016-110-16	Lead Wire Protection Bush LB-400(E) NBR	2	Price on req.
27	050-344-17	Motor Bracket SPC	1	Price on req.
28	142-192-16	Wave Washer 6201(D=32,t=0.4) SK5	1	Price on req.
29	052-100-15	Bearing 6201ZZC3	1	Price on req.
30	055-524-18	Rotor w/Bearing	1	Price on req.
31	147-016-10	Impeller Key 4x4x10L SUS403 (EN X6Cr13)	1	Price on req.
32	061-157-15	Bearing Collar d15.1xd21x1.6t Kaltgewalztes BlechC	1	Price on req.
33	052-101-16	Bearing 6202ZZC3	1	Price on req.
34	056-613-18	Stator	1	Price on req.
35	035-000-01	Oil PlugM10x16(B=13) EN X5CrNi18-10	1	Price on req.
36	121-246-11	Packing (Oil Plug) d10.3xd16x2t PE	1	Price on req.
37	064-429-10	Motor Frame ADC	1	Price on req.
38	025-000-80	Mechanical Seal W-14HC SSIC	1	Price on req.
39	122-129-10	O-Ring (M.Frame/O.Casing) G-90(89.4xd3.1) NBR	1	Price on req.
40	141-005-18	Hex.Nut M8 SUS304 (EN X5CrNi18-10)	3	Price on req.
41	029-256-15	Oil Casing HS3-4 FC	1	Price on req.
42	140-249-13	Hex.Socket Cap Bolt M6x15 SUS304 (EN X5Cr18-10)	3	Price on req.
43	071-112-19	Shaft Sleeve d11xd14.8x11l SUS430 (EN X6Cr17)	1	Price on req.
44	026-100-14	Oil Seal SC-15287 NBR	1	Price on req.
45	021-B64-11	Impeller (50HZ) 50Hz FCD	1	Price on req.
45	021-B65-12	Impeller (60HZ) 60Hz FCD	1	Price on req.
46	047-108-20	Impeller Thread Protect.Cover No.1(d10.5) SUS304 (EN X5CrNi18-10) Stainless Steel	1	Price on req.
47	142-164-19	Spring Washer M10 SUS304	1	Price on req.
48	024-175-14	Agitator Nut HS2-4(M10) S25C	1	Price on req.
49	140-057-12	Hex.Bolt M8x30 SUS304 (EN X5CrNi18-10) Stainless Steel	2	Price on req.
50	032-000-67	Hose Coupling 50mm(LB2-480) ADC	1	Price on req.
51	121-138-19	Packing (Screwed Flange) LB(P.C.84) NBR	1	Price on req.
52	121-370-15	Packing HS3-4(P.C.110xd112) NR	1	Price on req.
53	020-000-40	Pump Casing HS3-4 (FCD)	1	Price on req.
54	142-127-23	Plain Washer M8 SPC	2	Price on req.
55	141-005-18	Hex.Nut M8 SUS304 (EN X5CrNi18-10)	2	Price on req.
56	023-381-25	Strainer Stand HS3-4 (SPC)	1	Price on req.
57	140-062-10	Hex.Bolt M8x60 SUS304 (EN X5CrNi18-10) Stainless Steel	3	Price on req.
	173-428-10	Packing & O-Ring Set	1	Price on req.
	##oilVG32	ml Turbine Oil ISO VG32	150	Price on req.

Exploded View HS3-4



HS3-4