

GPN411-51

Kontroll-Nr. --

2019-01-28 V.20 / 1.11.2017

Pos.no	Item no.	Description	Quant.	UP
		Dichtungs-Oring-Satz	1	Price on req.
1	001-TEG-11	Cabtyre Cable Set (20m) H07RN-F4Cx4mm ² without stuffing box	1	Price on req.
1	M01-TEG-11	Cabtyre Cable Set (20m) NSSHÖU 4Cx4mm ²	1	Price on req.
2	070-107-18	Cable Clamp FC	1	Price on req.
3	141-004-17	Hex.Nut M6 SUS304	1	Price on req.
4	010-120-18	Cable Clip No.2-1 SPC	1	Price on req.
5	095-131-18	Chain 4mm(3L) SS	1	Price on req.
6	010-122-10	Cable Clip Rubber No.2 NBR	1	Price on req.
7	011-110-11	Shackle 6mm SS	1	Price on req.
8	140-081-15	Hex.Bolt M10x50 SUS304 (EN X5CrNi18-10) Stainless Steel	4	Price on req.
9	142-164-19	Spring Washer M10 SUS304	4	Price on req.
10	142-128-11	Plain Washer M10 Kaltgewalztes Blech	1	Price on req.
11	070-103-10	L-Shape Fitting KT-55 SPC	1	Price on req.
12	140-032-11	Hex.Bolt M6x15 SUS304 (EN X5CrNi18-10) Stainless Steel	1	Price on req.
13	006-127-15	Stuffing Box 380/400/415V-50Hz(EUR,NSU) No.3 FC	1	Price on req.
14	140-035-27	Hex.Bolt M6x20 SUS304 (EN X5CrNi18-10) Stainless Steel	2	Price on req.
15	008-151-14	Mould Cover KR3-13 CR	1	Price on req.
16a	009-123-10	Terminal (EUR,NSU) P-5.5 CU	3	Price on req.
16b	009-129-16	Terminal E (Small) CU	3	Price on req.
17	002-129-15	Heat Shrink Tube (Sold per meter) EVA(d14x1t) (Vm)	1	Price on req.
18	002-132-11	Heat Shrink Tube (Sold per meter) A4(d17x0.27t) (Vm)	1	Price on req.
19	009-101-12	Terminal(C/W Screw) d12x(d6.6xd6.6)x25l C3604	3	Price on req.
20	140-055-10	Hex.Bolt M8x25 SUS304	4	Price on req.
21	143-041-12	Pan Screw M6x8 SWRM	1	Price on req.
22	142-162-33	Spring Washer M6 SWRH	1	Price on req.
23	009-106-17	Terminal(EUR,NSU) R-8-6 CU	1	Price on req.
24	050-368-17	Motor Bracket FC	1	Price on req.
25	122-250-11	O-Ring 230xd3.8 NBR	1	Price on req.
26	053-398-15	Motor Protector 415V-50Hz KA314-HLYL00 (B.C)	1	Price on req.
27	142-124-20	Plain Washer M4 SPC	2	Price on req.
28	142-160-31	Spring Washer M4 SWRH	2	Price on req.
29	143-017-19	Pan Screw M4x14 SWRM	2	Price on req.
30	058-125-14	Lead Wire Protection Plate d110xd190x1.2t SPC+NBR	1	Price on req.
31	055-571-10	Rotor	1	Price on req.
32	147-011-15	Impeller Key 12x8x40l EN X30Cr13	1	Price on req.
33	056-001-99	Stator	1	Price on req.
34	140-052-17	Hex.Bolt M8x16 SUS304	2	Price on req.
35	046-000-05	Air Release Valve GSZ/NKZ/B SPCC	1	Price on req.
36	121-151-18	Packing (Air Release Valve) P.C.80xd50 CR	1	Price on req.
37	142-128-11	Plain Washer M10 Kaltgewalztes Blech	4	Price on req.
38	121-343-19	Packing d9.5xd16x5t NBR	4	Price on req.
39	203-017-18	Ball d28 NBR	1	Price on req.
40	068-172-17	Handle NKZ2-11KW SGP+SPC	1	Price on req.
41	142-199-13	Wave Washer #6208/6307 SK-5	1	Price on req.
42	052-110-18	Bearing 6307ZC3	1	Price on req.
43	142-162-33	Spring Washer M6 SWRH	2	Price on req.
44	143-042-13	Pan Screw M6x10 SWRM	2	Price on req.
45	122-161-14	O-Ring G-300 NBR	1	Price on req.
46	065-159-19	Outer Cover NKZ2-11KW SS	1	Price on req.
47	122-161-14	O-Ring G-300 NBR	1	Price on req.
48	064-302-16	Motor Frame FC	1	Price on req.
49	122-250-11	O-Ring 230xd3.8 NBR	1	Price on req.
50	140-052-33	Hex.Bolt M8x16 SWRM	3	Price on req.
51	062-158-19	Bearing Fixing Plate d95xd144x4.5t SPCC	1	Price on req.
52	140-099-16	Hex.Bolt M12x40 SUS304	6	Price on req.
53	142-165-10	Spring Washer M12 SUS304	6	Price on req.
54	060-242-15	Bearing Housing FC	1	Price on req.
55	026-156-15	Oil Seal TC-55729 NBR	1	Price on req.
56	122-120-11	O-Ring G-45 NBR	1	Price on req.
57	071-134-20	Shaft Sleeve GPN2-100 SUS304 (EN X5CrNi18-10) Stainless Steel	1	Price on req.
58	025-001-28	Mechanical Seal NH-50 SIC	1	Price on req.
59	122-251-12	O-Ring 205xd3.8 NBR	1	Price on req.
60	029-195-28	Oil Casing GPN2-100 FC	1	Price on req.
61	061-142-17	Bearing Collar d50xd70x3t SPC	1	Price on req.
62	052-113-11	Bearing 6310ZC3	1	Price on req.
63	146-029-13	Retaining Ring C50 SK-5	1	Price on req.
64	142-164-19	Spring Washer M10 SUS304	4	Price on req.
65	140-079-10	Hex.Bolt M10x40 SUS304 (EN X5Cr18-10)	4	Price on req.
66	121-247-12	Packing d12.3xd18x2t PE	1	Price on req.
67	035-113-18	Oil Plug M12x14 SUS304	1	Price on req.
68	143-070-10	Pan Screw M5x6 SWRM	3	Price on req.
69	142-164-19	Spring Washer M10 SUS304	4	Price on req.
70	140-000-01	Hex.Bolt M10x30(B=14) SUS304 (EN X5CrNi18-10) Stainless Steel	4	Price on req.
71	122-295-18	O-Ring 310xd3.8 NBR	1	Price on req.
72	020-543-15	Pump Casing GPN2-100 FC	1	Price on req.
73	021-576-10	Impeller (50HZ) 50Hz HiCrFC	1	Price on req.
74	120-105-14	Packing (S.Cover) d291xd348x0.5t PE	1	Price on req.
75	140-139-19	Hex.Bolt M16x143(B=19,) SUS304 (EN X5CrNi18-10) Stainless Steel	1	Price on req.
76	140-001-08	Hex.Bolt M8x35(B=14) SWRM	4	Price on req.
77	022-467-23	Suction Cover 50Hz FC	1	Price on req.
78	142-210-11	Plain Washer d8.6xd13.4x1t SUS304 (EN X5CrNi18-10) Stainless Steel	4	Price on req.
79	142-129-25	Plain Washer M12 SPC	3	Price on req.
80	141-005-18	Hex.Nut M8 SUS304 (EN X5CrNi18-10)	4	Price on req.

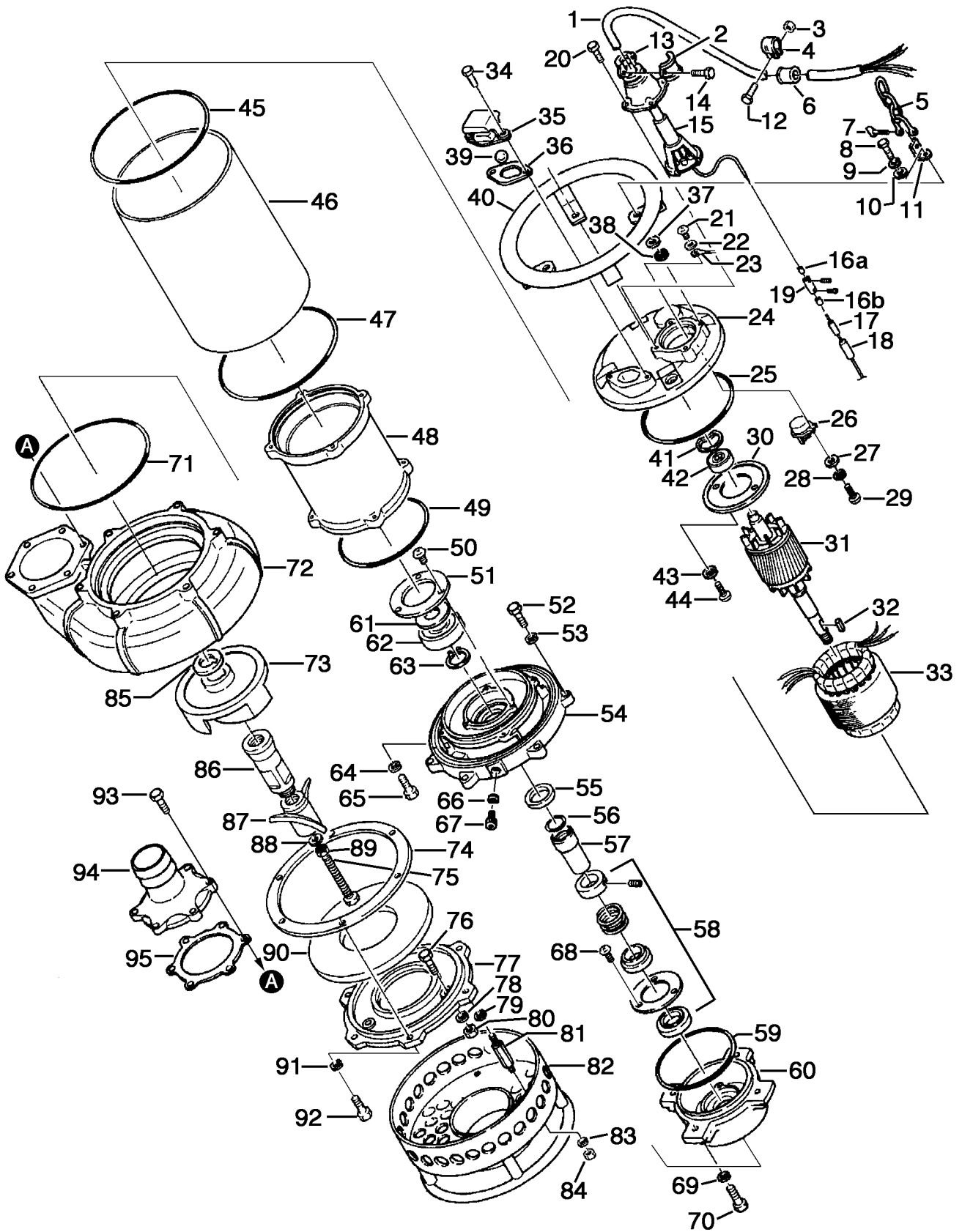
GPN411-51

Kontroll-Nr. --

2019-01-28 V.20 / 1.11.2017

Pos.no	Item no.	Description	Quant.	UP
81	144-478-15	Stud Bolt M12x111(25/21) SUS403 (EN-X6Cr13)	3	Price on req.
82	023-253-14	Strainer Stand 50Hz SPC+SGP	1	Price on req.
83	142-165-10	Spring Washer M12 SUS304	3	Price on req.
84	141-007-10	Hex.Nut M12 SUS304	3	Price on req.
85	040-123-17	Impeller Shim d45.2xd59x0.3t SUS304 (EN X5CrNi18-10) Stainless Steel	1	Price on req.
86	024-131-18	Connection Rod GPN2-80 FCMB	1	Price on req.
87	024-120-14	Stirrer GPN-80 HiCrFC	1	Price on req.
88	142-130-16	Plain Washer M16 SUS304 (EN X5Cr18-10)	1	Price on req.
89	141-008-40	Hex.Nut M16(t=10) SUS304 (EN X5CrNi18-10) Stainless Steel	1	Price on req.
90	033-114-13	Suction Plate 50Hz HiCrFC	1	Price on req.
91	142-129-25	Plain Washer M12 SPC	3	Price on req.
92	140-097-14	Hex.Bolt M12x30 SUS304	3	Price on req.
93	140-099-16	Hex.Bolt M12x40 SUS304	6	Price on req.
94	032-204-18	Hose Coupling 100mm(NKZ2) FC	1	Price on req.
95	121-184-10	Packing NKZ-6 NBR	1	Price on req.
	173-098-17	Packing & O-Ring Set	1	Price on req.
	##oilVG32	ml Turbine Oil ISO VG32	2500	Price on req.

Exploded View GPN411-51



GPN411-51