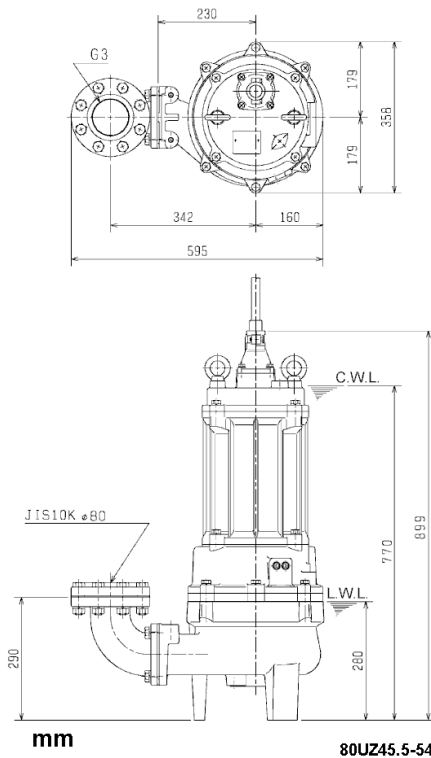
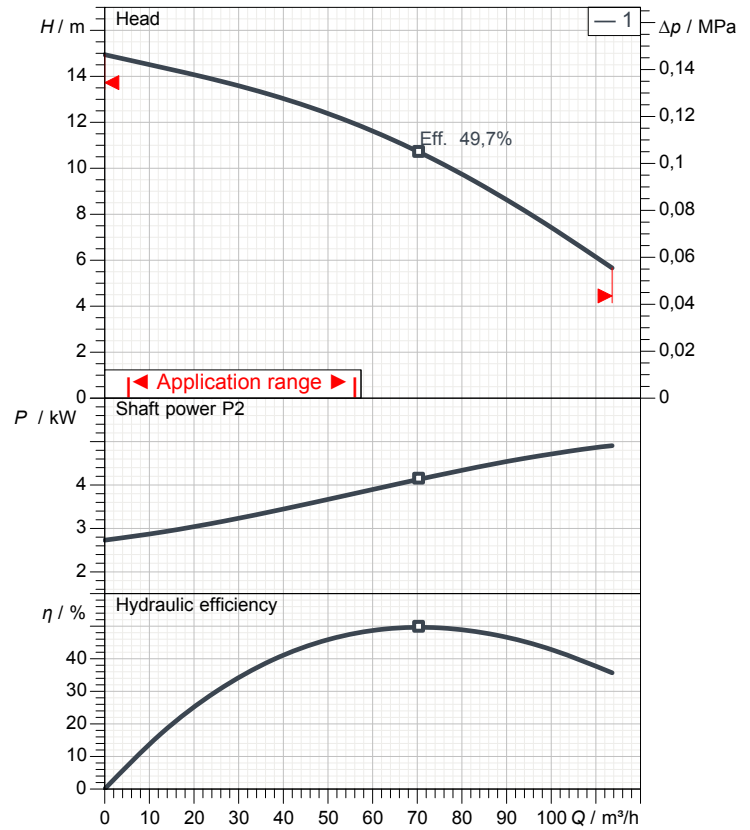


Data sheet 80UZ45.5-54



CWL: Continuous running water level
LWL: Lowest running water level



Specification

Electric submersible pump UZ-series
Degree of protection IP 68
Pressure resistance max. 15 m
Type of impeller Vortex impeller
Free passage 80 mm
Suitable for:
waste water and liquid carrying

Electric motor

Dry-type submersible induction motor
Insulation class F 4 Poles 1443 1/min
Starting mode Direct starting
Rated voltage 400 V 50 Hz 3~
Power uptake 6,96 kW
Rated power 5,50 kW
Rated current 12,1 A
Start current 63,0 A

Cable

10m H07RN-F 4Cx2,5mm²

Motor Protection

Circle thermal protector
(snap-action bi-metal device)

Shaft seal

Double inside mechanical seal in oil bath
additional lubrication by oil lifting device
Primary seal
Silicon carbide on silicon carbide
Secondary seal
Silicon carbide on silicon carbide

Bearings

Shielded ball bearings, maintenance-free

Materials

Impeller	FC200 (EN-GJL-200)
Pump casing	FC200 (EN-GJL-200)
Motor Frame	FC200 (EN-GJL-200)
Shaft	SUS420J2 (EN-X30Cr13)

Discharge size

3" (80mm) special screwed-in mating flange
guide rail fitting optional

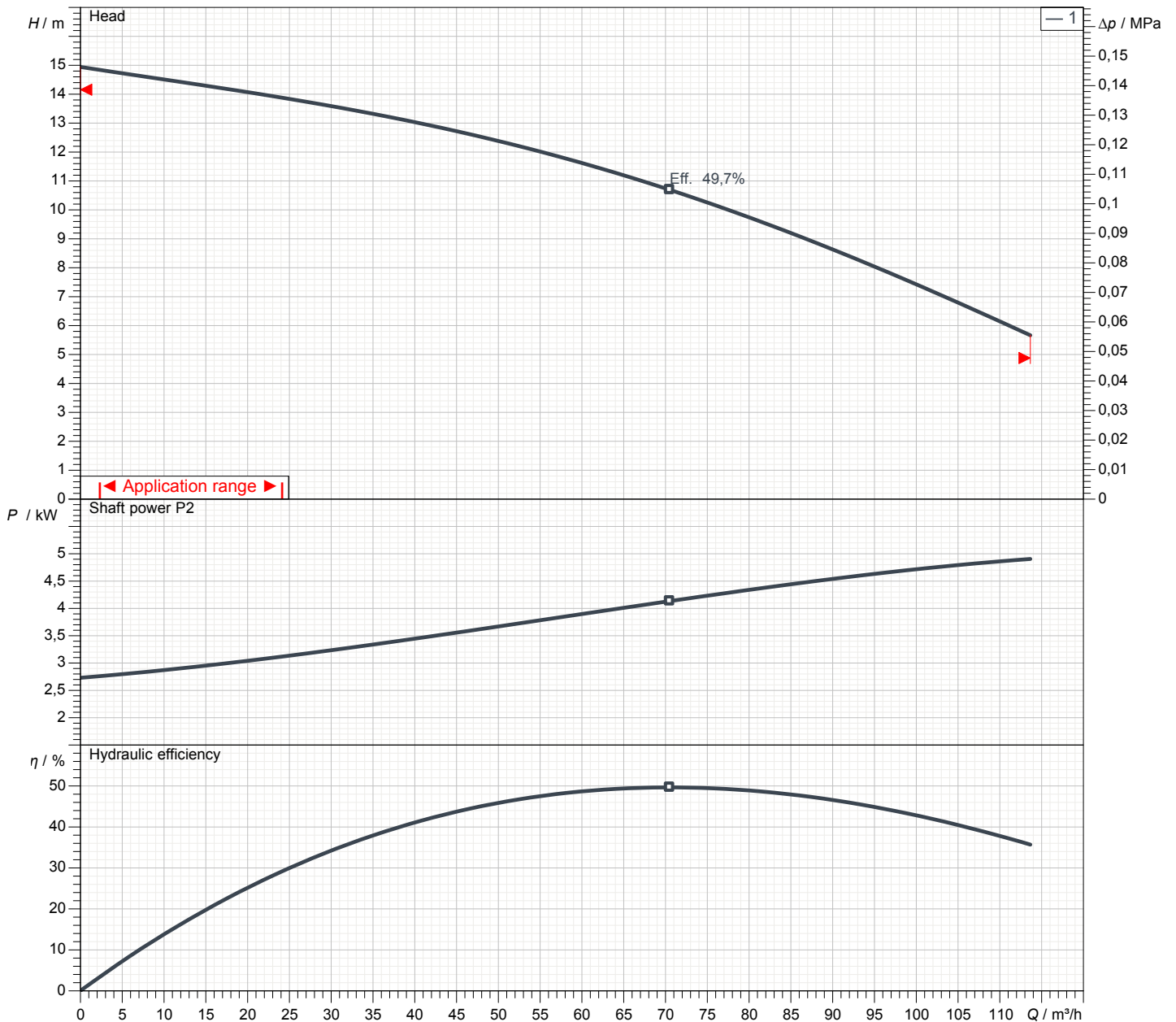
Weight

129 kg (dry weight of the pump only without cable)

Performance curve

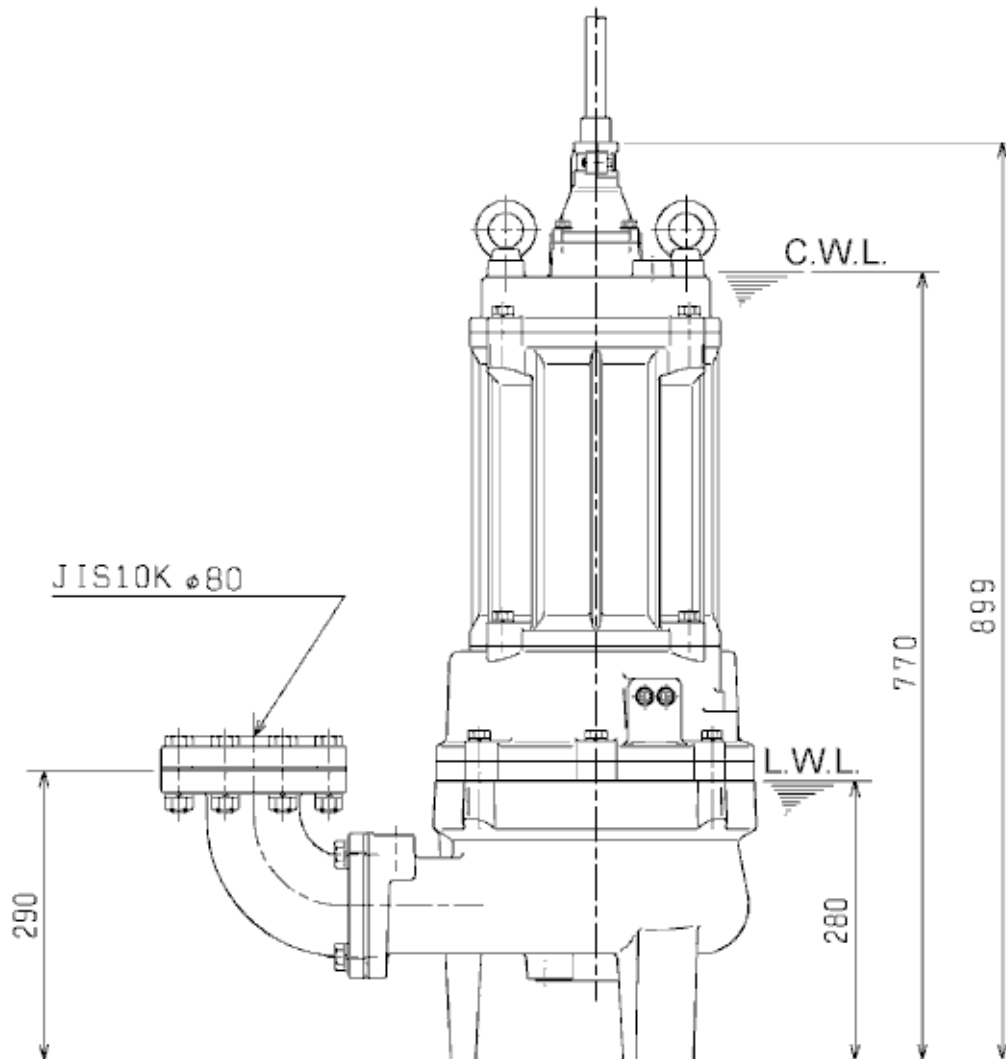
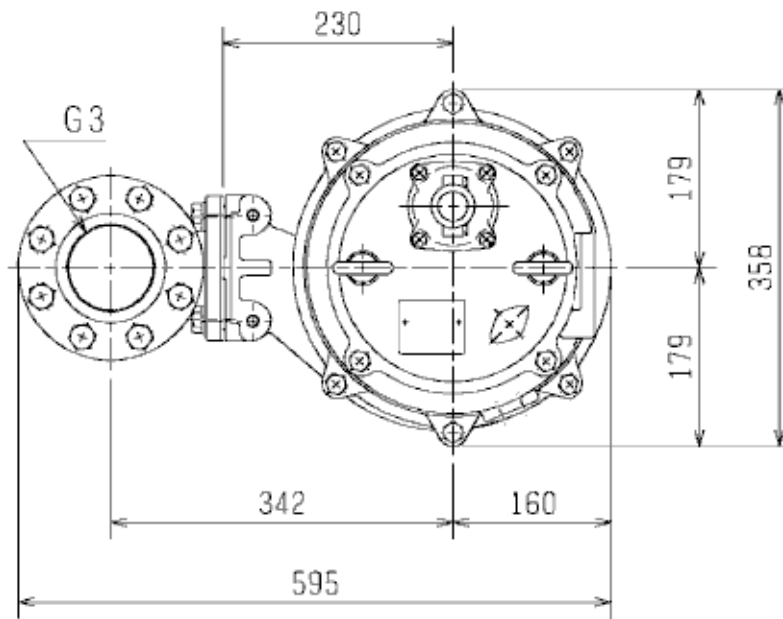
80UZ45.5-54

Discharge port	3"
Head	14,9 m
Flow	113,7 m ³ /h
Rated power	5,50 kW
Power input	6,96 kW
Phases	3~
Voltages	400 V
Frequency	50 Hz
Rated current	12,1 A
Starting current	63,04 A
Number of poles	4
Speed	1443 1/min
Starting mode	Direct starting
Insulation class	F



Dimensions

80UZ45.5-54



mm

80UZ45.5-54

CWL: Continuous running water level
LWL: Lowest running water level

