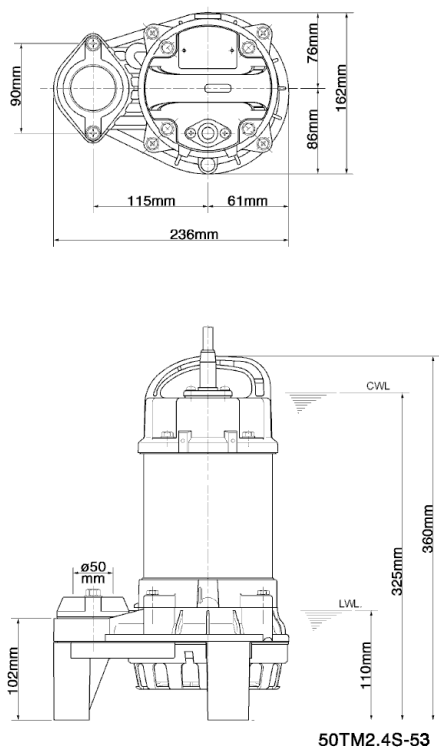
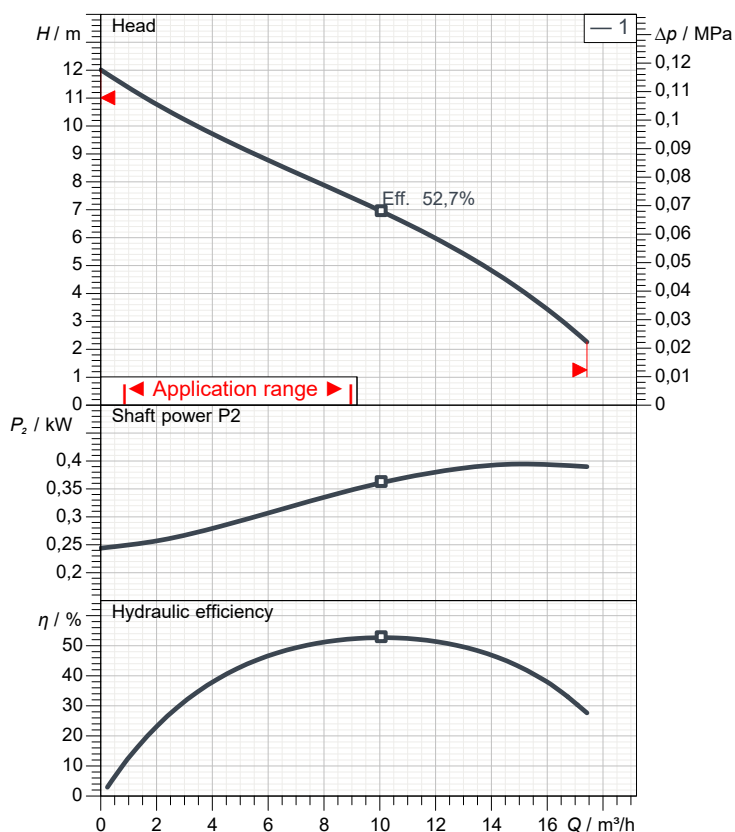


Data sheet 50TM2.4S-53



CWL: Continuous running water level
LWL: Lowest running water level



Specification

Electric submersible pump TM-series
Degree of protection IP 68
Pressure resistance max. 10 m
Type of impeller Vortex impeller
Free passage 10 mm
Suitable for:
sea water, salt water

Electric motor

Dry-type submersible induction motor
Insulation class E 2Poles 2.813 1/min
Starting mode
Rated voltage 230 V 50 Hz 1~
Power uptake 0,62 kW
Rated power 0,40 kW
Rated current 3,1 A
Start current 8,7 A

Cable

10m H07RN8-F 3Cx1mm²

Motor Protection

Circle thermal protector
(snap-action bi-metal device)

Shaft seal

Double inside mechanical seal in oil bath
additional lubrication by oil lifting device
Primary seal
Silicon carbide on ceramic
Secondary seal
Ceramic on carbon

Bearings

Shielded ball bearings, maintenance-free

Materials

| | |
|-------------|----------|
| Impeller | PPO-GF20 |
| Pump casing | ABS-GF20 |
| Motor Frame | Titanium |
| Shaft | Titanium |

Discharge size

50mm screwed-in mating flange

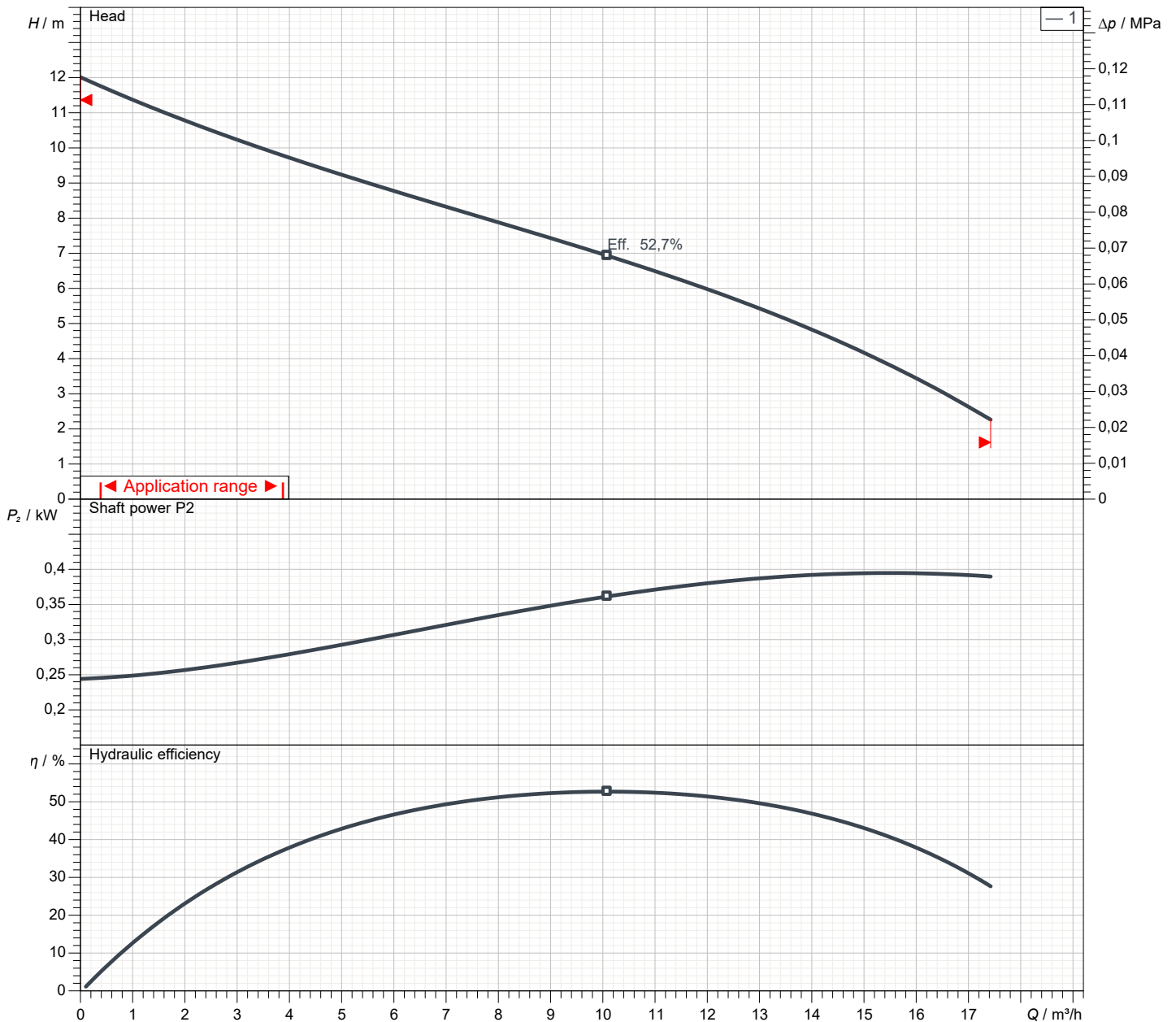
Weight

6,7 kg (dry weight of the pump only without cable)

Performance curve

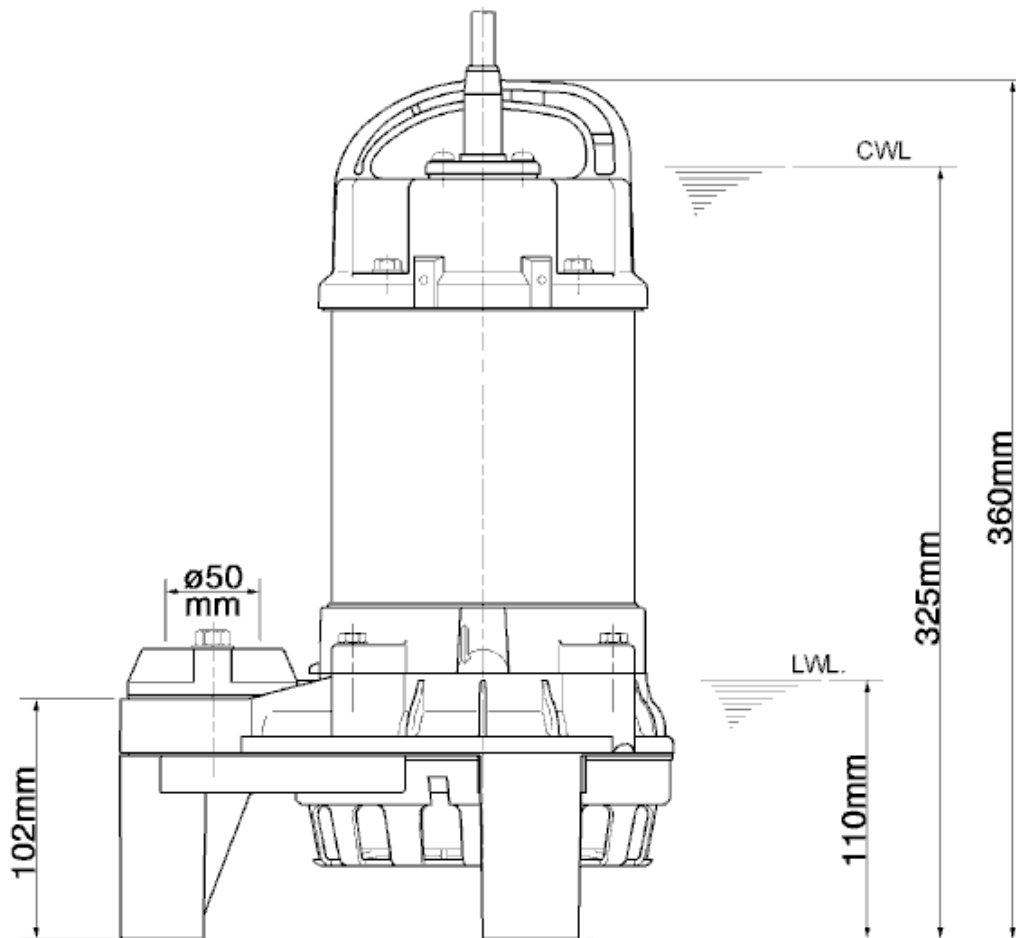
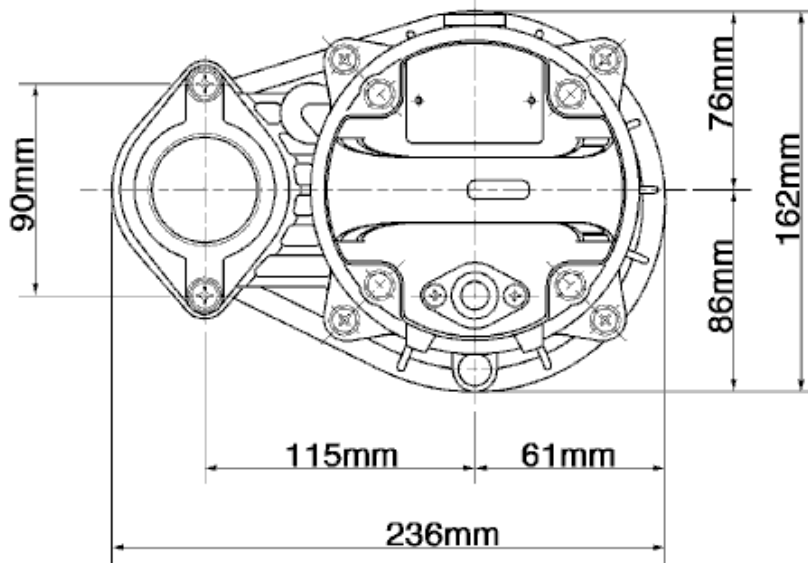
50TM2.4S-53

| | |
|------------------|------------------------|
| Discharge port | 2" |
| Head | 12,0 m |
| Flow | 17,4 m ³ /h |
| Rated power | 0,40 kW |
| Power input | 0,62 kW |
| Phases | 1~ |
| Voltages | 230 V |
| Frequency | 50 Hz |
| Rated current | 3,1 A |
| Starting current | 8,71 A |
| Number of poles | 2 |
| Speed | 2.813 1/min |
| Starting mode | |
| Insulation class | E |



Dimensions

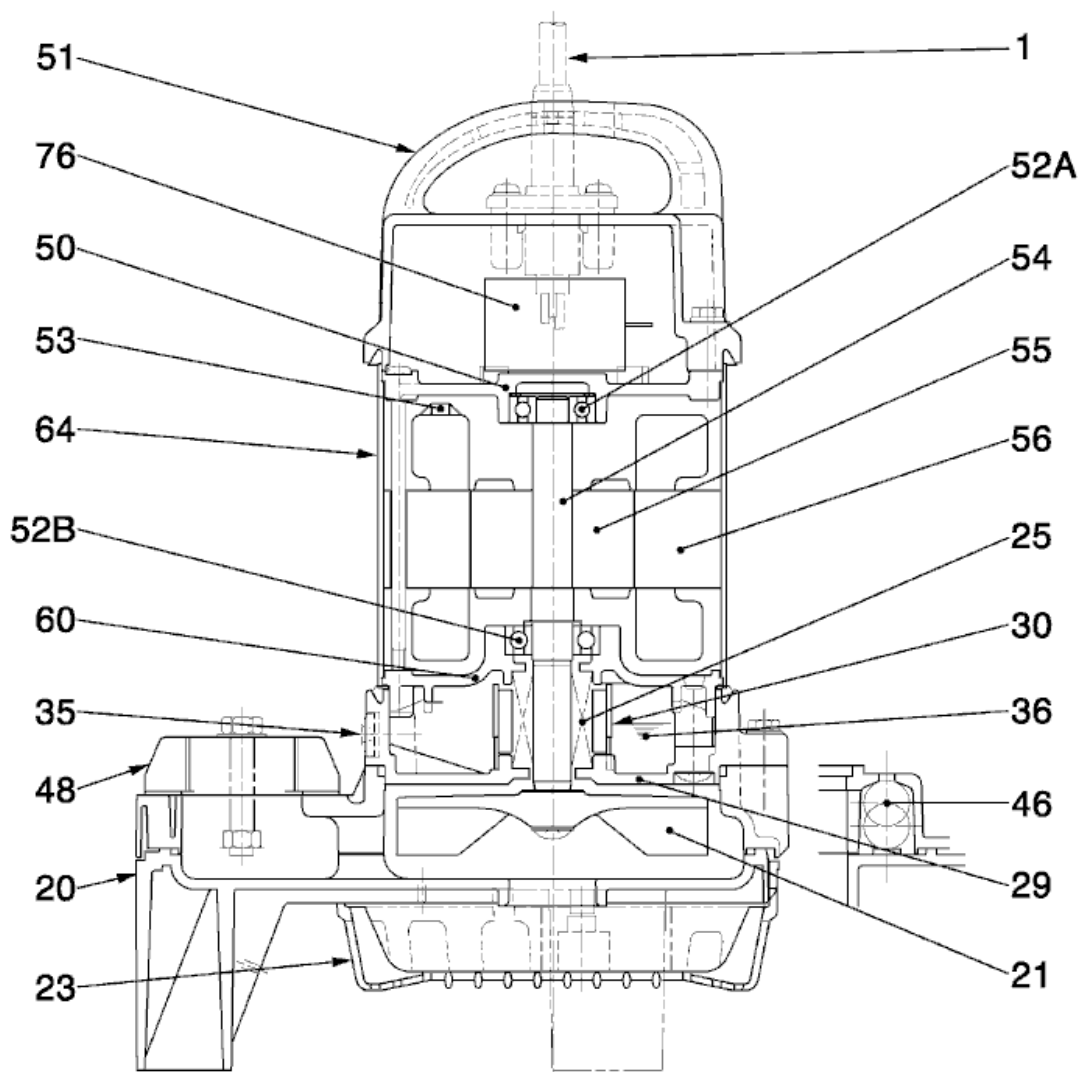
50TM2.4S-53



50TM2.4S-53

CWL: Continuous running water level
LWL: Lowest running water level

Sectional drawing 50TM2.4S-53



50TM2.4S-53

| No. | Description | Remark | No. | Description | Remark |
|-----|-----------------------------------|-----------------------------|-----|-----------------|-----------------------------|
| 1 | Cable | H07RN-F | 54 | Shaft | Titanium |
| 20 | Pump casing | ABS-GF20 | 55 | Rotor | . |
| 21 | Impeller | PPO-GF20 | 56 | Stator | . |
| 23 | Strainer | ABS | 60 | Bearing Housing | ADC12 Aluminium die casting |
| 25 | Mechanical seal | W-14HL | 64 | Motor Frame | Titanium |
| 29 | Oil casing | PPS-GF40 | 76 | Condenser | . |
| 30 | Oil distributor | Plastic | | | |
| 35 | Oil screw | Titanium | | | |
| 36 | Lubricant | white oil (ISO VG32) | | | |
| 46 | Air vent valve | Glass bead | | | |
| 48 | Screwed Flange | Polycarbonate | | | |
| 50 | Motor cover | ADC12 Aluminium die casting | | | |
| 51 | Main cover | PPO+PPS -GF40 | | | |
| 52A | Upper bearing | 6201ZZC3 | | | |
| 52B | Lower bearing | 6302ZZC3 | | | |
| 53 | Motor Protector 380/400/415V-50Hz | KA314-HRXL00 (H.C) | | | |