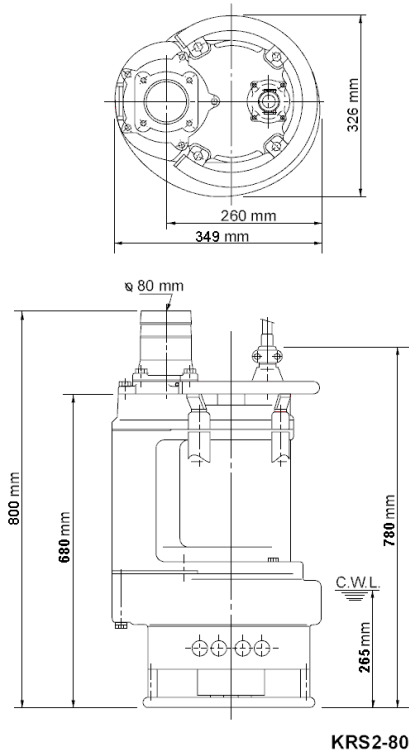
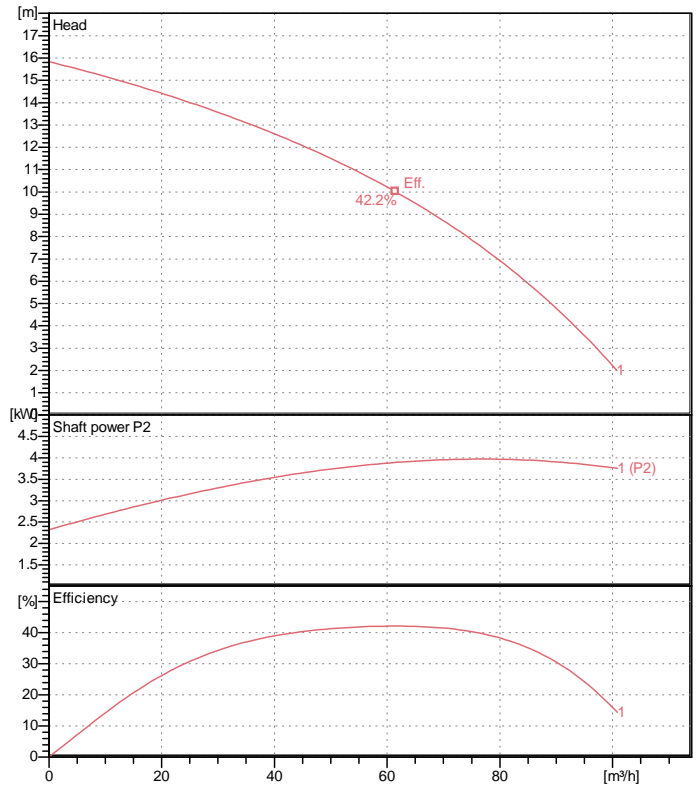


Data sheet KRS2-80



KRS2-80

CWL: Continuous running water level



Specification

Electric submersible pump
 Degree of protection IP 68
 Depth of submersion max. 15 m
 Type of impeller Open
 Max. solid handling 30 mm
 Suitable for:
 sludge, slurry, liquids containing

Electric motor

Dry-type submersible induction motor
 Insulation class E 4Poles 1435 1/min
 Starting mode Directly
 Rated voltage 400 V 50 Hz 3~
 Power uptake 5.29 kW
 Rated power 4.00 kW
 Rated current 9.5 A
 Start current 83.0 A

Cable

20m NSSHÖU 4Cx2,5mm²

Motor Protection

Circle thermal protector
 (snap-action bi-metal device)

Shaft seal

Double inside mechanical seal in oil bath
 additional lubrication by oil lifting device

Primary seal

Silicon carbide on silicon carbide

Secondary seal

Silicon carbide on silicon carbide

Bearings

Shielded ball bearings, maintenance-free

Materials

Impeller	Chromium iron casting
Agitator	Chromium iron casting
Pump casing	FC200 (EN-GJL-200)
Suction cover	FC200 (EN-GJL-200)
Motor Frame	FC150 (EN-GJL-150)
Shaft	SUS420J2 (EN-X30Cr13)

Discharge size

3" (80mm) hose coupling

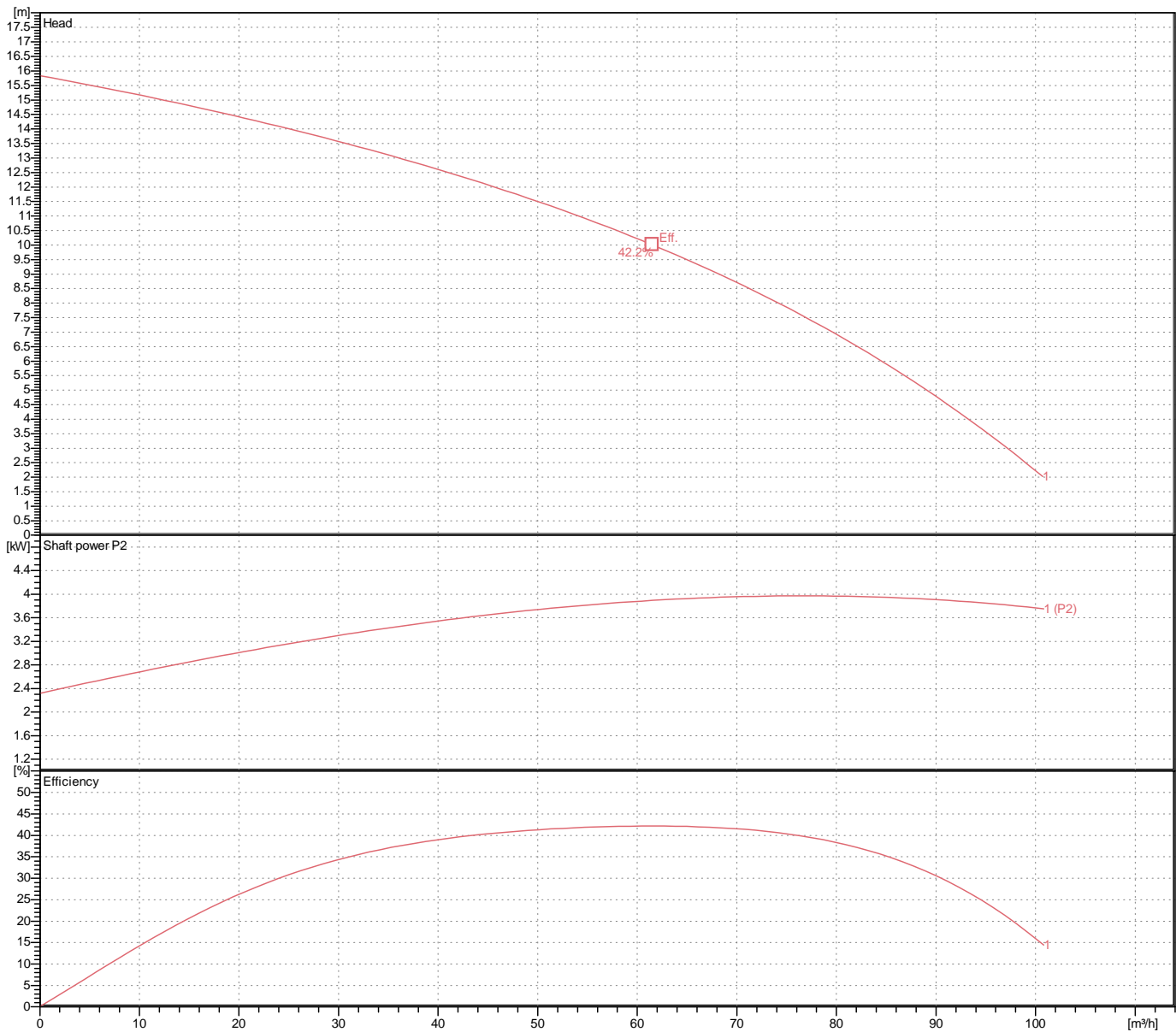
Weight

105 kg (dry weight of the pump only without cable)

Performance curve

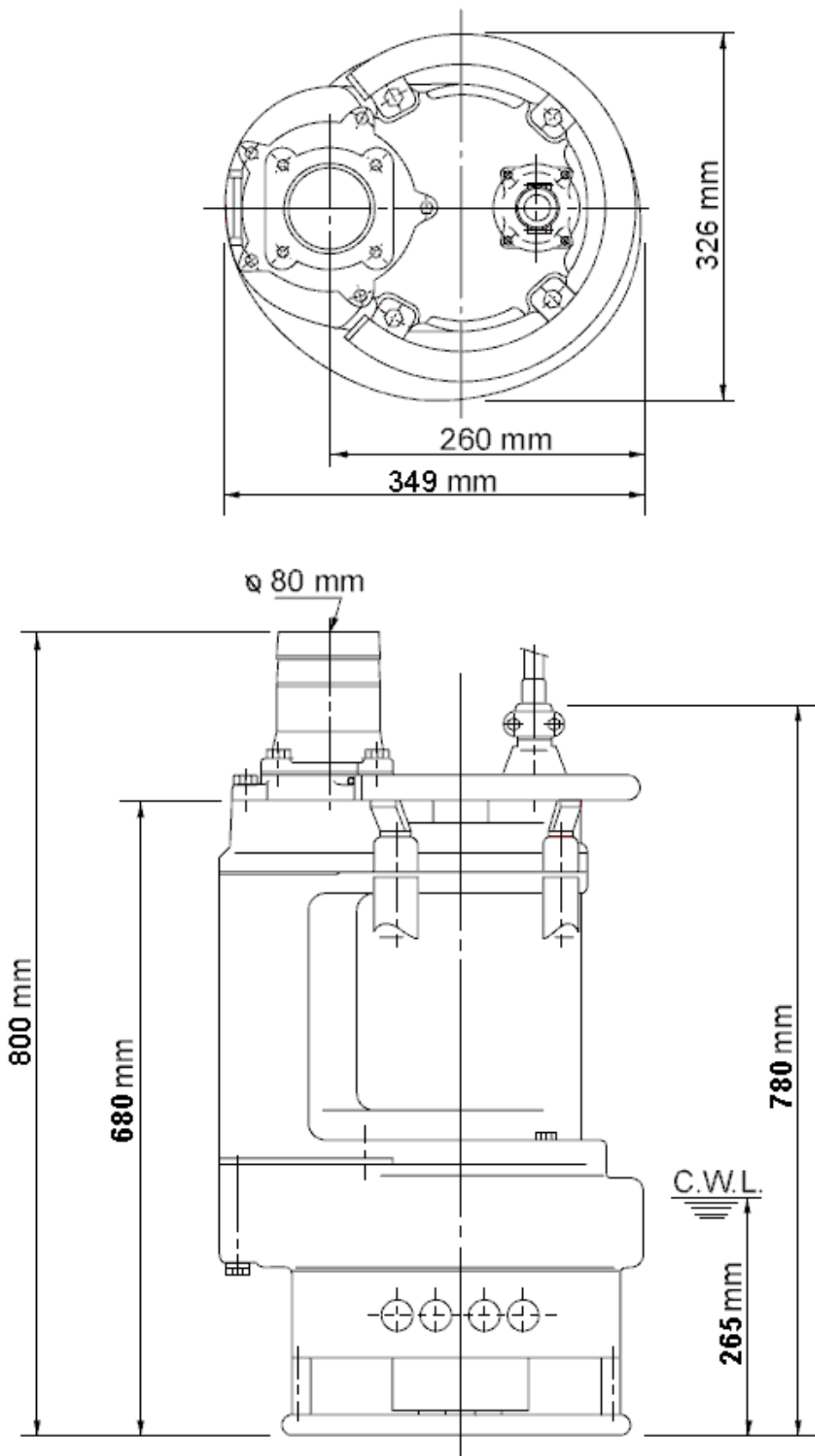
KRS2-80

Discharge port	3"
Head	15.8 m
Flow	100.7 m ³ /h
Rated power	4.00 kW
Power input	5.29 kW
Phases	3~
Voltages	400 V
Frequency	50 Hz
Rated current	9.5 A
Starting current	83.03 A
Number of poles	4
Speed	1435 1/min
Starting mode	Directly
Insulation class	E



Dimensions

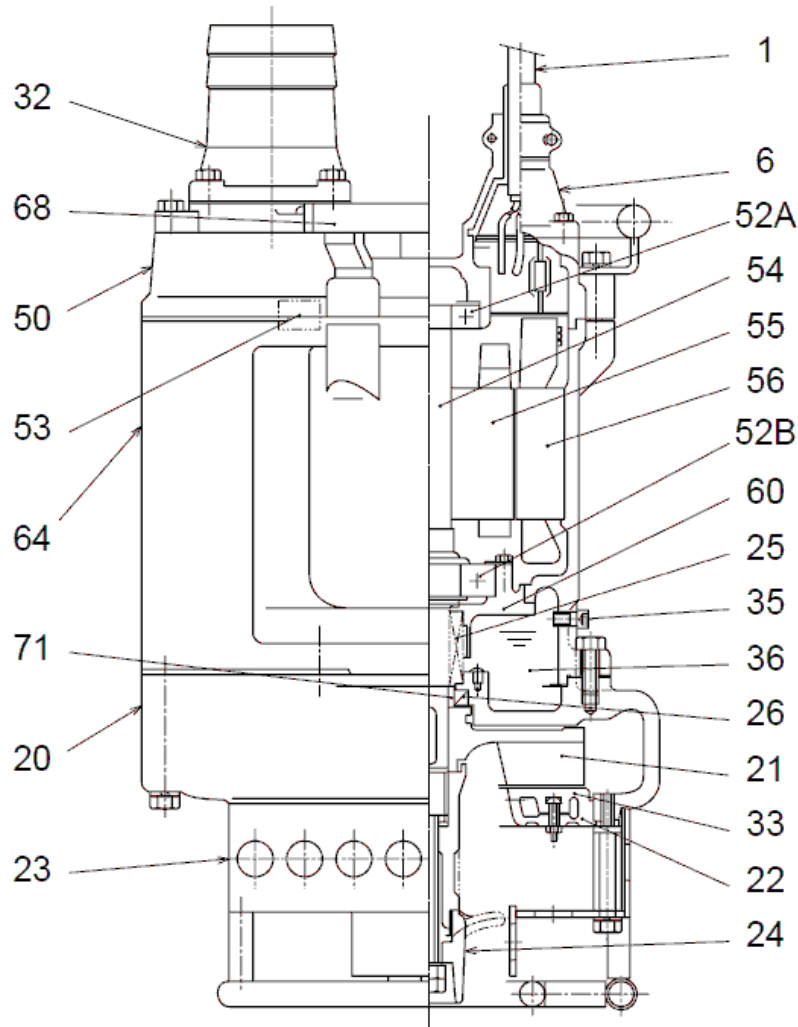
KRS2-80



KRS2-80

CWL: Continuous running water level
LWL: Lowest running water level

Sectional drawing KRS2-80



KRS2-80

No.	Description	Remark	No.	Description	Remark
1	Cable	20m NSSHÖU	53	Motor Protector 380/400/415V-50Hz KA314-HRXL00 (H.C)	
6	Stuffing box	FC200 (EN-GJL-200)	54	Shaft	SUS420J2 (EN-X30Cr13)
20	Pump casing	FC200 (EN-GJL-200)	55	Rotor	.
21	Impeller	Chromium iron casting	56	Stator	.
22	Suction cover	FC200 (EN-GJL-200)	60	Bearing Housing	FC150 (EN-GJL-150)
23	Strainer	Steel plate / steel pipe	64	Motor Frame	FC150 (EN-GJL-150)
24	Agitator	Chromium iron casting	68	Handle	electroplated steel pipe
25	Mechanical seal	H-30	71	Shaft protection sleeve	SUS403 (EN-X6Cr13)
26	Oil seal	DD-355511			
32	Discharge coupling	FC200 (EN-GJL-200)			
33	Suction cover	Chromium iron casting			
35	Oil screw	SUS304 (EN-X5CrNi18-10)			
36	Lubricant	Turbine oil (ISO VG32)			
50	Main cover	FC150 (EN-GJL-150)			
52A	Upper bearing	6305ZZC3			
52B	Lower bearing	6308ZZC3			