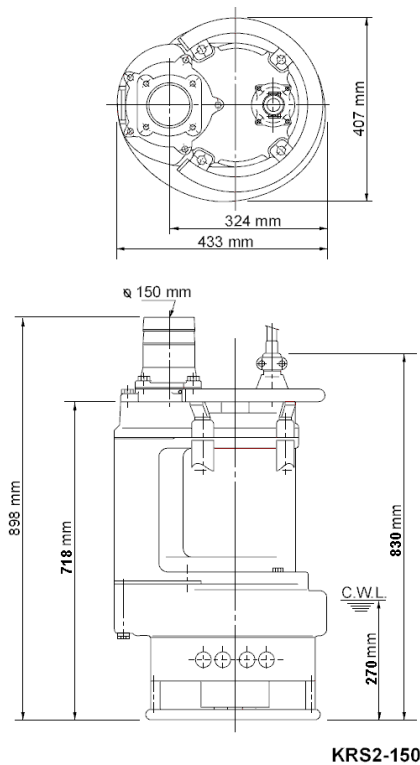
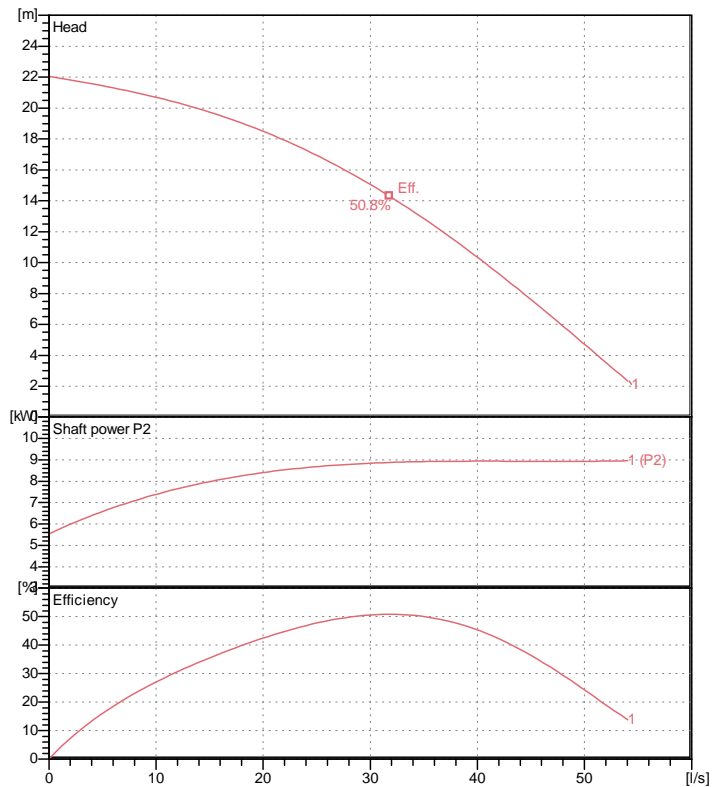


Data sheet KRS2-150



KRS2-150

CWL: Continuous running water level



Specification

Electric submersible pump
 Degree of protection IP 68
 Depth of submersion max. 15 m
 Type of impeller Open
 Max. solid handling 30 mm
 Suitable for:
 sludge, slurry, liquids containing

Electric motor

Dry-type submersible induction motor
 Insulation class B 4Poles 1450 1/min
 Starting mode Directly
 Rated voltage 400 V 50 Hz 3~
 Power uptake 10.80 kW
 Rated power 9.00 kW
 Rated current 18.5 A
 Start current 155.0 A

Cable

20m NSSHÖU 4Cx4mm²

Motor Protection

Circle thermal protector
 (snap-action bi-metal device)

Shaft seal

Double inside mechanical seal in oil bath
 additional lubrication by oil lifting device

Primary seal

Silicon carbide on silicon carbide

Secondary seal

Silicon carbide on silicon carbide

Bearings

Shielded ball bearings, maintenance-free

Materials

Impeller	Chromium iron casting
Agitator	Chromium iron casting
Pump casing	FC200 (EN-GJL-200)
Suction cover	FC200 (EN-GJL-200)
Motor Frame	FC150 (EN-GJL-150)
Shaft	SUS420J2 (EN-X30Cr13)

Discharge size

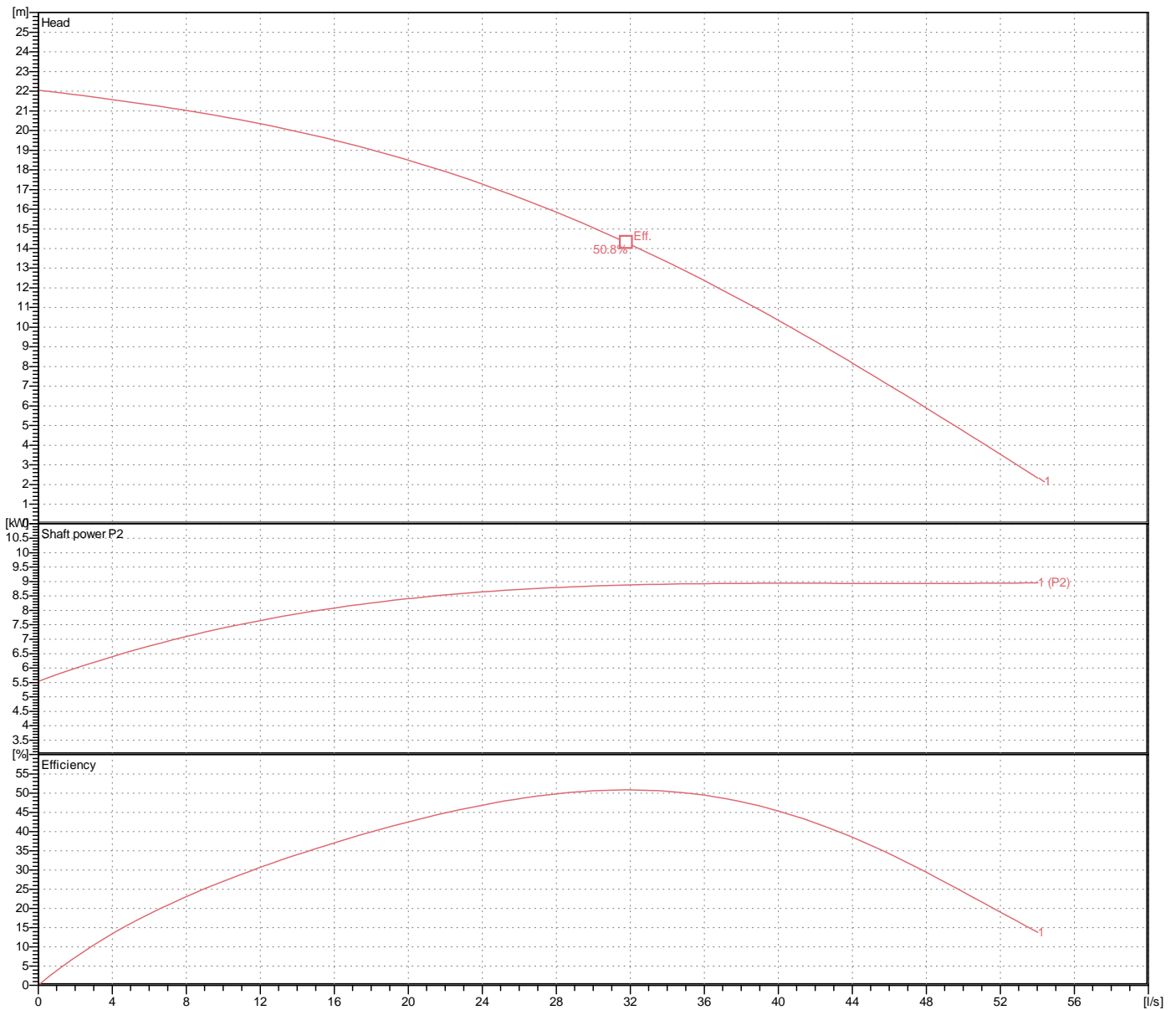
6" (150mm) hose coupling

Weight

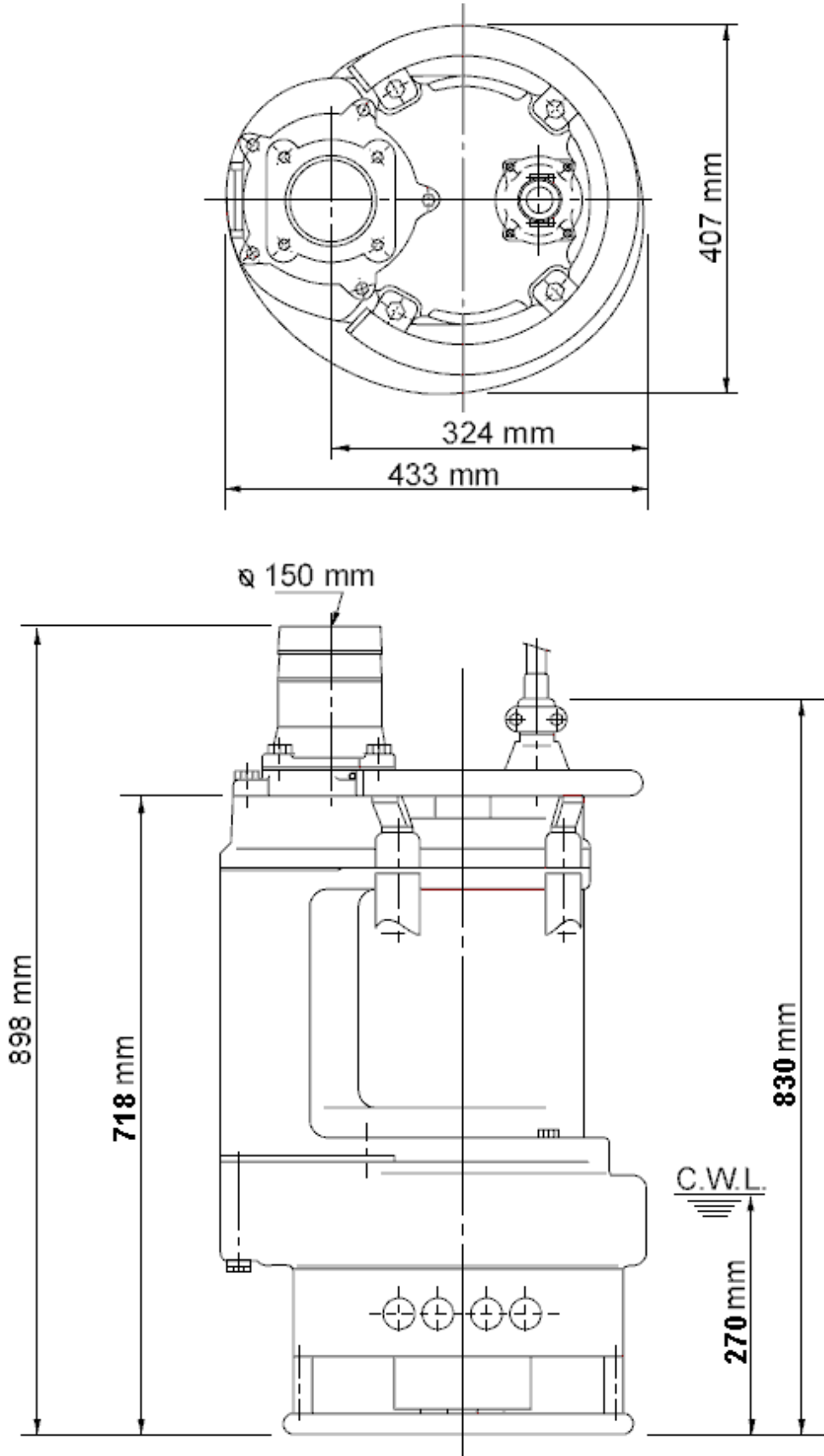
170 kg (dry weight of the pump only without cable)

Performance curve KRS2-150

Discharge port	6"
Head	22.1 m
Flow	54.0 l/s
Rated power	9.00 kW
Power input	10.80 kW
Phases	3~
Voltages	400 V
Frequency	50 Hz
Rated current	18.5 A
Starting current	155.03 A
Number of poles	4
Speed	1450 1/min
Starting mode	Directly
Insulation class	B



Dimensions KRS2-150



KRS2-150

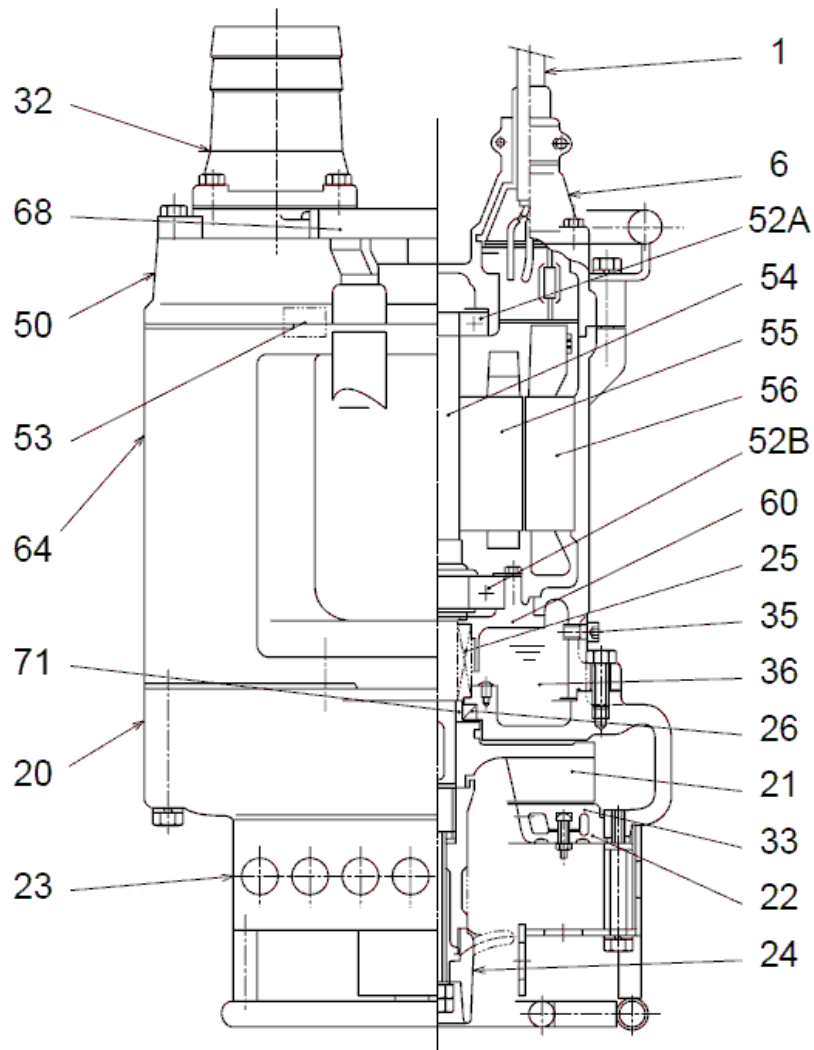
CWL: Continuous running water level
LWL: Lowest running water level

 **TSURUMI PUMP**

Tsurumi Europe GmbH
30.01.2018 V.18 / 1.10.2015

Heltorfer Str. 14 * 40472 Düsseldorf * Germany
Tel.: +49-211-4179373 sales@tsurumi.eu
Fax: +49-211-417937-480 www.tsurumi.eu

Sectional drawing KRS2-150



KRS2-150

No.	Description	Remark	No.	Description	Remark
1	Cable	20m NSSHÖU	53	Motor Protector 380/400/415V-50Hz KA314-HRXL00 (H.C)	
6	Stuffing box	FC200 (EN-GJL-200)	54	Shaft	SUS420J2 (EN-X30Cr13)
20	Pump casing	FC200 (EN-GJL-200)	55	Rotor	.
21	Impeller	Chromium iron casting	56	Stator	.
22	Suction cover	FC200 (EN-GJL-200)	60	Bearing Housing	FC150 (EN-GJL-150)
23	Strainer	Steel plate / steel pipe	64	Motor Frame	FC150 (EN-GJL-150)
24	Agitator	Chromium iron casting	68	Handle	electroplated steel pipe
25	Mechanical seal	H-35	71	Shaft protection sleeve	SUS403 (EN-X6Cr13)
26	Oil seal	DD-406211			
32	Discharge coupling	FC200 (EN-GJL-200)			
33	Suction cover	Chromium iron casting			
35	Oil screw	SUS304 (EN-X5CrNi18-10)			
36	Lubricant	Turbine oil (ISO VG32)			
50	Main cover	FC150 (EN-GJL-150)			
52A	Upper bearing	6307ZZC3			
52B	Lower bearing	6310ZZC3			