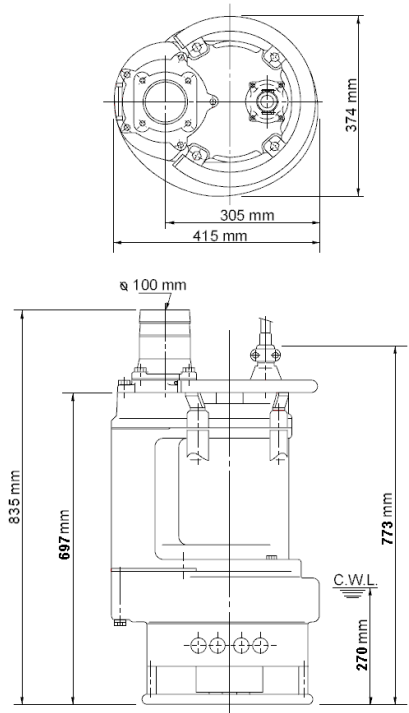
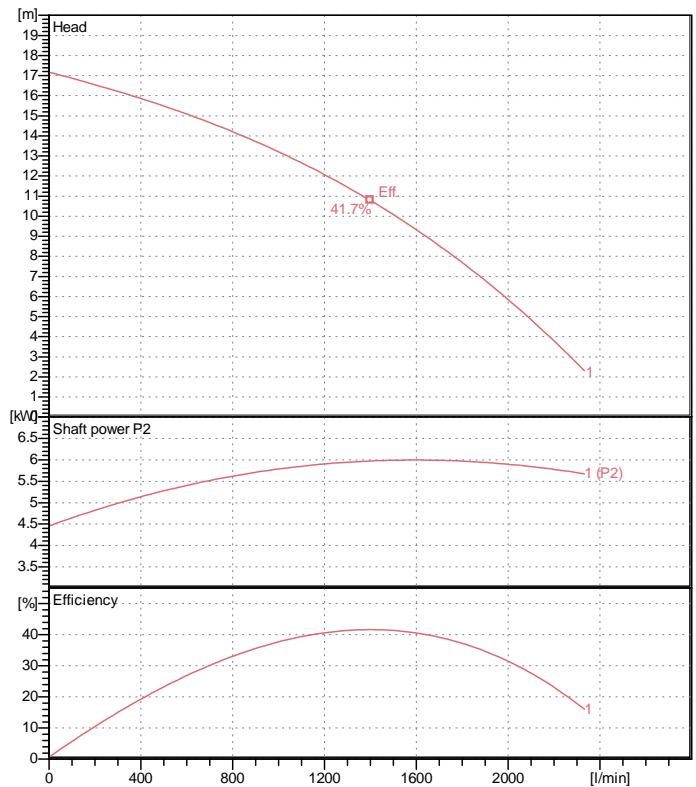


Data sheet KRS2-100



KRS2-100

CWL: Continuous running water level



Specification

Electric submersible pump
 Degree of protection IP 68
 Depth of submersion max. 15 m
 Type of impeller Open
 Max. solid handling 30 mm
 Suitable for:
 sludge, slurry, liquids containing

Electric motor

Dry-type submersible induction motor
 Insulation class B 4Poles 1440 1/min
 Starting mode Directly
 Rated voltage 400 V 50 Hz 3~
 Power uptake 7.50 kW
 Rated power 6.00 kW
 Rated current 13 A
 Start current 93.0 A

Cable

20m NSSHÖU 4Cx2,5mm²

Motor Protection

Circle thermal protector
 (snap-action bi-metal device)

Shaft seal

Double inside mechanical seal in oil bath
 additional lubrication by oil lifting device

Primary seal

Silicon carbide on silicon carbide

Secondary seal

Silicon carbide on silicon carbide

Bearings

Shielded ball bearings, maintenance-free

Materials

| | |
|---------------|-----------------------|
| Impeller | Chromium iron casting |
| Agitator | Chromium iron casting |
| Pump casing | FC200 (EN-GJL-200) |
| Suction cover | FC200 (EN-GJL-200) |
| Motor Frame | FC150 (EN-GJL-150) |
| Shaft | SUS420J2 (EN-X30Cr13) |

Discharge size

4" (100mm) hose coupling

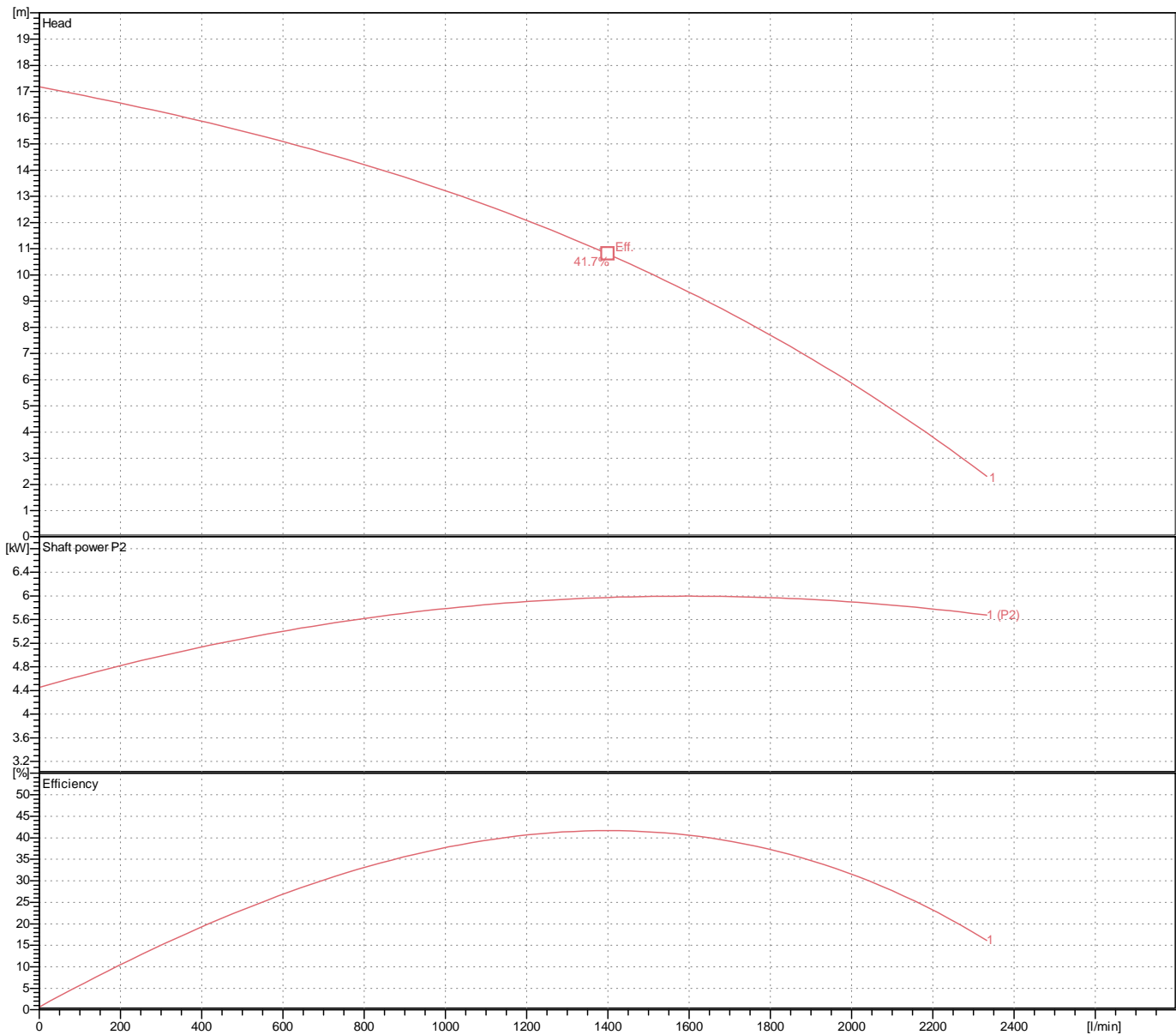
Weight

145 kg (dry weight of the pump only without cable)

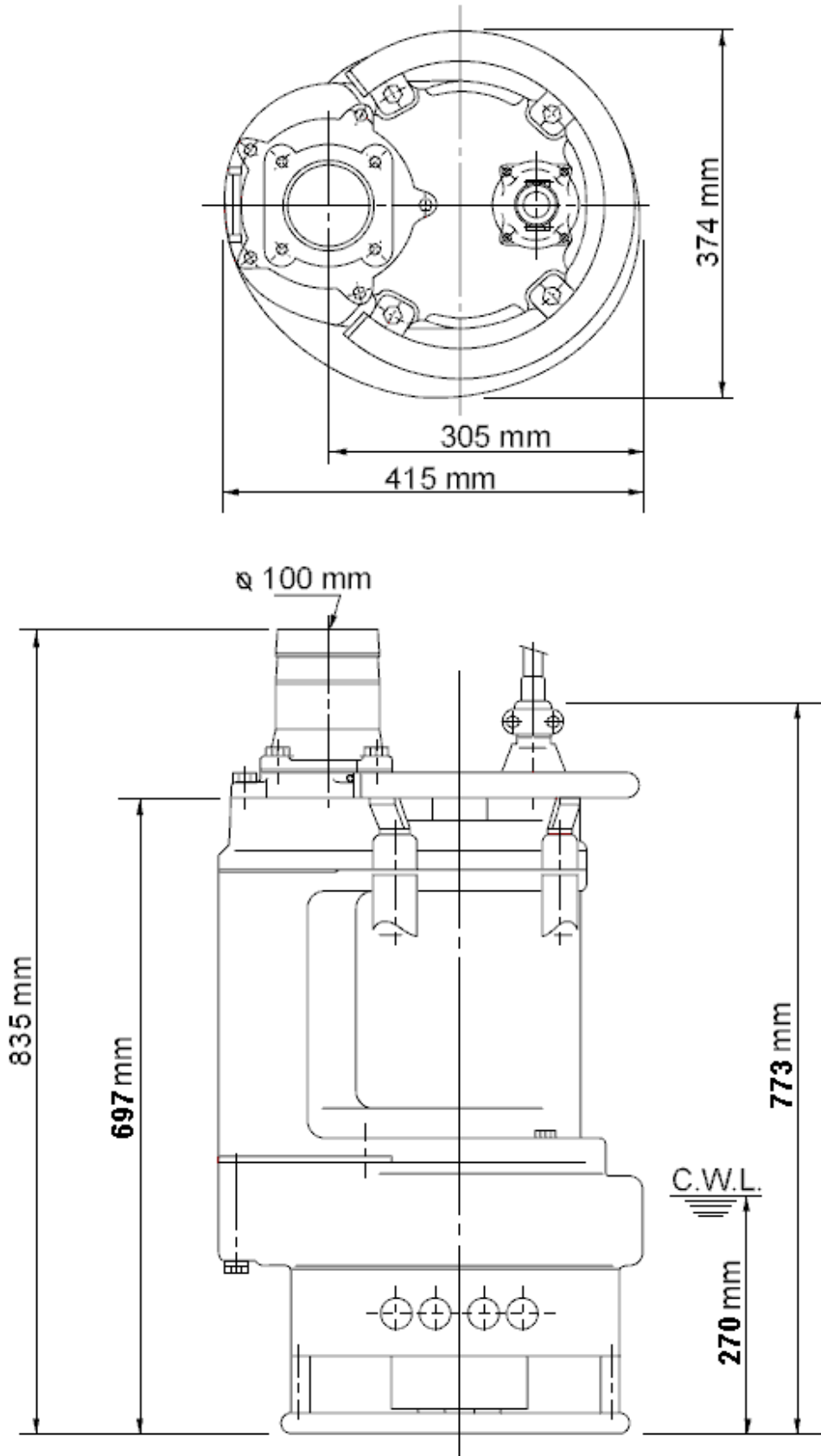
Performance curve

KRS2-100

| | |
|------------------|--------------|
| Discharge port | 4" |
| Head | 17.2 m |
| Flow | 2332.7 l/min |
| Rated power | 6.00 kW |
| Power input | 7.50 kW |
| Phases | 3~ |
| Voltages | 400 V |
| Frequency | 50 Hz |
| Rated current | 13 A |
| Starting current | 92.95 A |
| Number of poles | 4 |
| Speed | 1440 1/min |
| Starting mode | Directly |
| Insulation class | B |



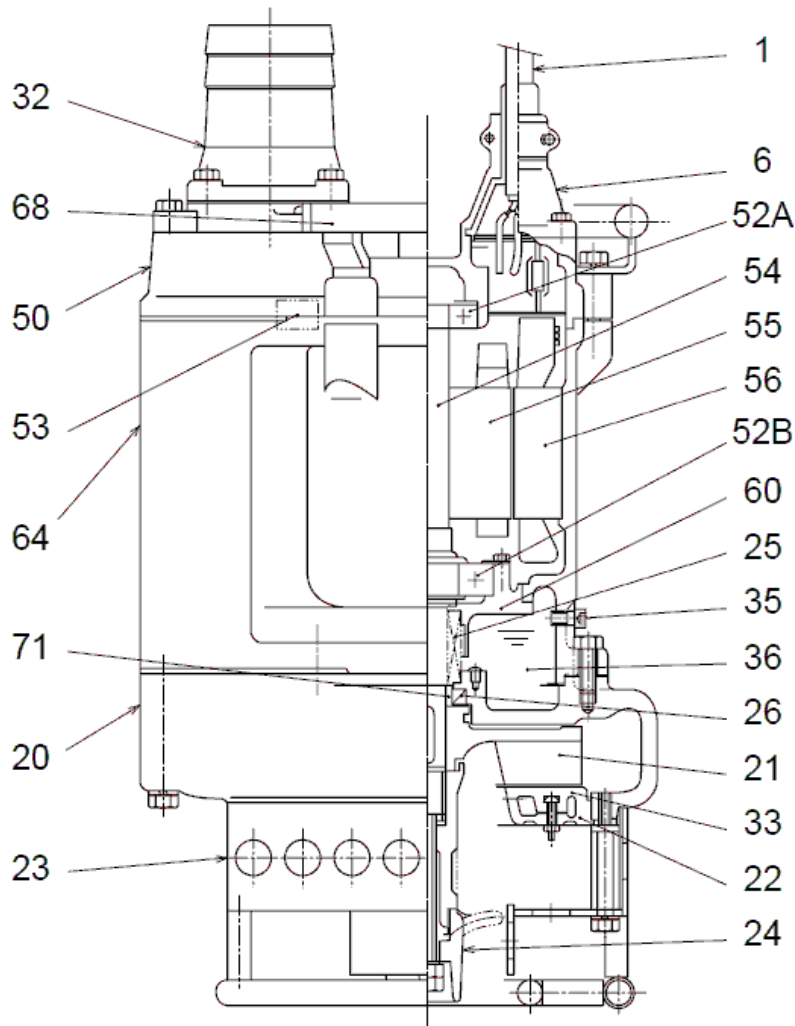
Dimensions KRS2-100



KRS2-100

CWL: Continuous running water level
LWL: Lowest running water level

Sectional drawing KRS2-100



KRS2-100

| No. | Description | Remark | No. | Description | Remark |
|-----|--------------------|--------------------------|-----|--|--------------------------|
| 1 | Cable | 20m NSSHÖU | 53 | Motor Protector 380/400/415V-50Hz KA314-HRXL00 (H.C) | |
| 6 | Stuffing box | FC200 (EN-GJL-200) | 54 | Shaft | SUS420J2 (EN-X30Cr13) |
| 20 | Pump casing | FC200 (EN-GJL-200) | 55 | Rotor | . |
| 21 | Impeller | Chromium iron casting | 56 | Stator | . |
| 22 | Suction cover | FC200 (EN-GJL-200) | 60 | Bearing Housing | FC150 (EN-GJL-150) |
| 23 | Strainer | Steel plate / steel pipe | 64 | Motor Frame | FC150 (EN-GJL-150) |
| 24 | Agitator | Chromium iron casting | 68 | Handle | electroplated steel pipe |
| 25 | Mechanical seal | H-35 | 71 | Shaft protection sleeve | SUS403 (EN-X6Cr13) |
| 26 | Oil seal | DD-406211 | | | |
| 32 | Discharge coupling | FC200 (EN-GJL-200) | | | |
| 33 | Suction cover | Chromium iron casting | | | |
| 35 | Oil screw | SUS304 (EN-X5CrNi18-10) | | | |
| 36 | Lubricant | Turbine oil (ISO VG32) | | | |
| 50 | Main cover | FC150 (EN-GJL-150) | | | |
| 52A | Upper bearing | 6306ZZC3 | | | |
| 52B | Lower bearing | 6309ZZC3 | | | |