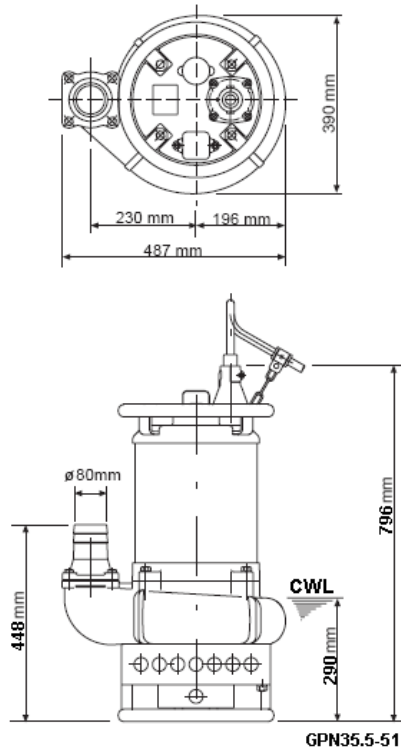
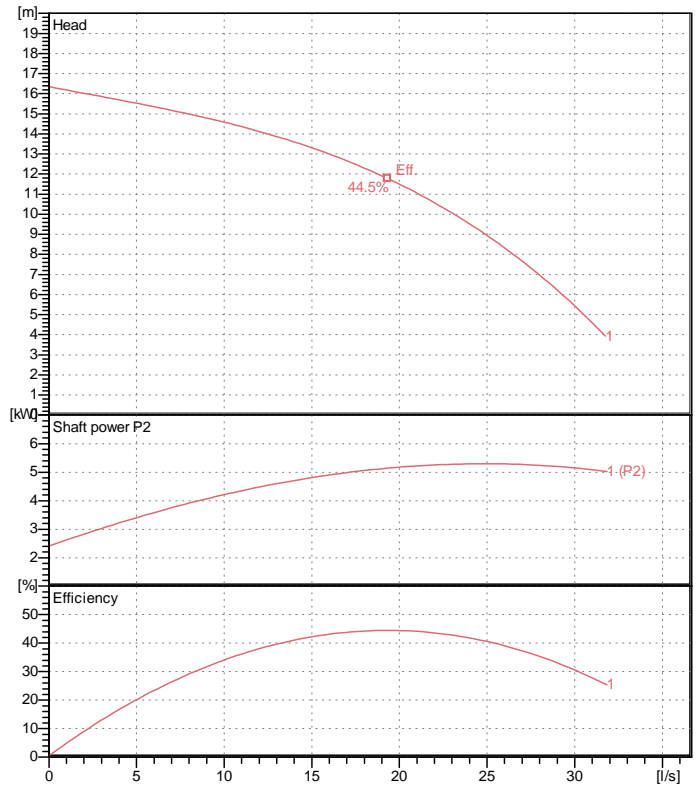


# Data sheet GPN35.5-51



CWL: Continuous running water level



## Specification

Electric submersible pump  
 Degree of protection IP 68  
 Depth of submersion max. 20 m  
 Type of impeller Open  
 Max. solid handling 30 mm  
 Suitable for:  
 sludge, slurry, liquids containing sand

## Electric motor

Dry-type submersible induction motor  
 Insulation class E 4Poles 1435 1/min  
 Starting mode Directly  
 Rated voltage 400 V 50 Hz 3~  
 Power uptake 6.91 kW  
 Rated power 5.50 kW  
 Rated current 12.1 A  
 Start current 87.0 A

## Cable

20m NSSHÖU 4Cx2,5mm<sup>2</sup>

## Motor Protection

Circle thermal protector  
 (snap-action bi-metal device)

## Shaft seal

Double inside mechanical seal in oil bath  
 additional lubrication by oil lifting device

Primary seal  
 Silicon carbide on silicon carbide  
 Secondary seal  
 SUS420J2 (EN-X30Cr13)

## Bearings

Shielded ball bearings, maintenance-free

## Materials

Impeller	Chromium iron casting
Agitator	Chromium iron casting
Pump casing	FC200 (EN-GJL-200)
Suction cover	FC200 (EN-GJL-200)
Motor Frame	FC150 (EN-GJL-150)
Shaft	DIN 1.7220 (chromium molybdenum)

## Discharge size

3" (80mm) BS-coupling (threaded flange)

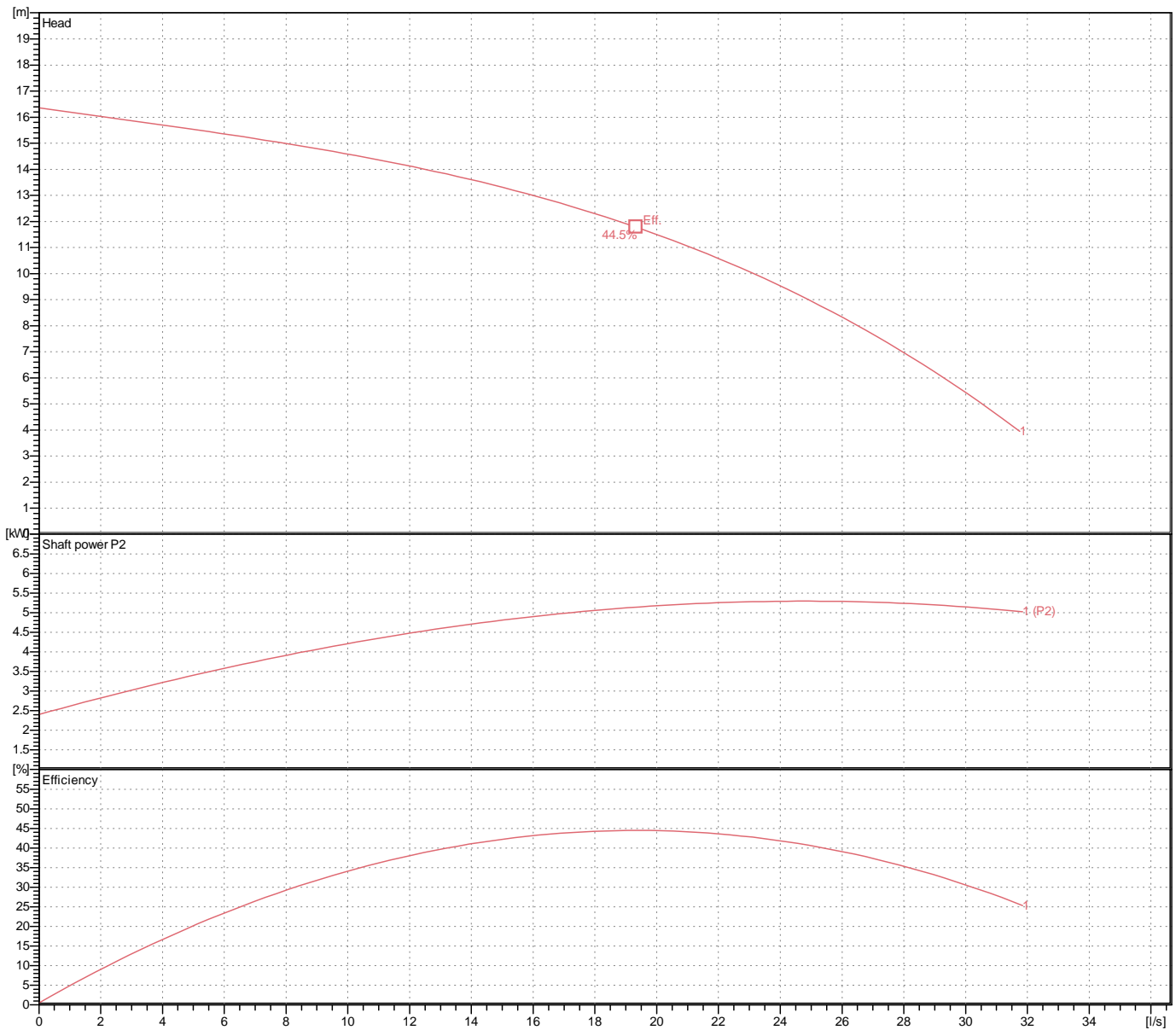
## Weight

145 kg (dry weight of the pump only without cable)

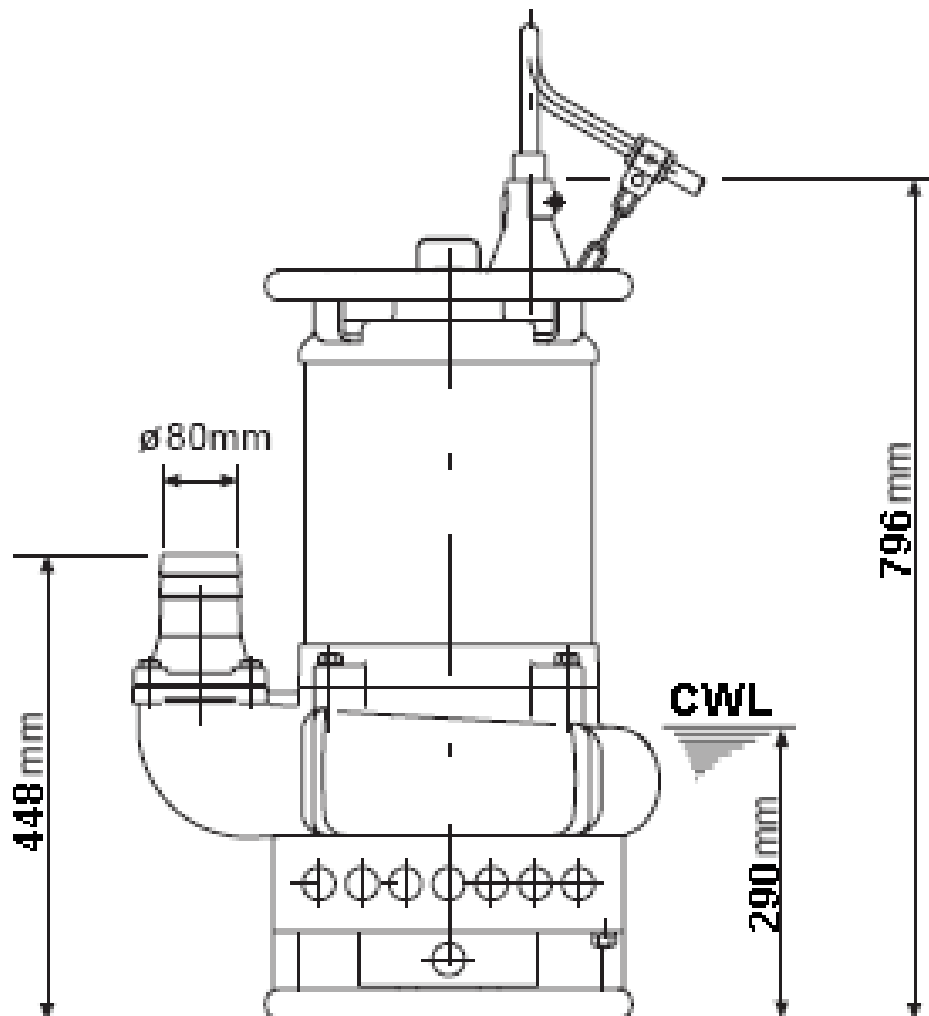
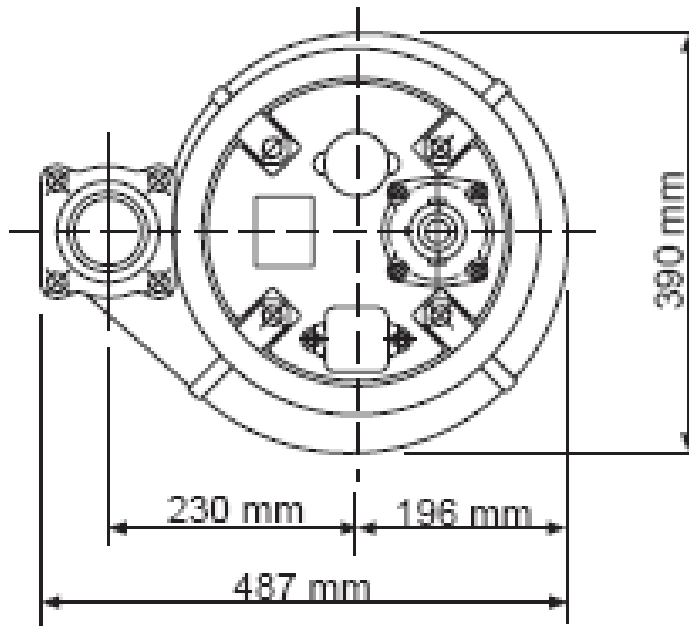
# Performance curve

## GPN35.5-51

Discharge port	3"
Head	16.4 m
Flow	31.8 l/s
Rated power	5.50 kW
Power input	6.91 kW
Phases	3~
Voltages	400 V
Frequency	50 Hz
Rated current	12.1 A
Starting current	87.00 A
Number of poles	4
Speed	1435 1/min
Starting mode	Directly
Insulation class	E



# Dimensions GPN35.5-51



**GPN35.5-51**

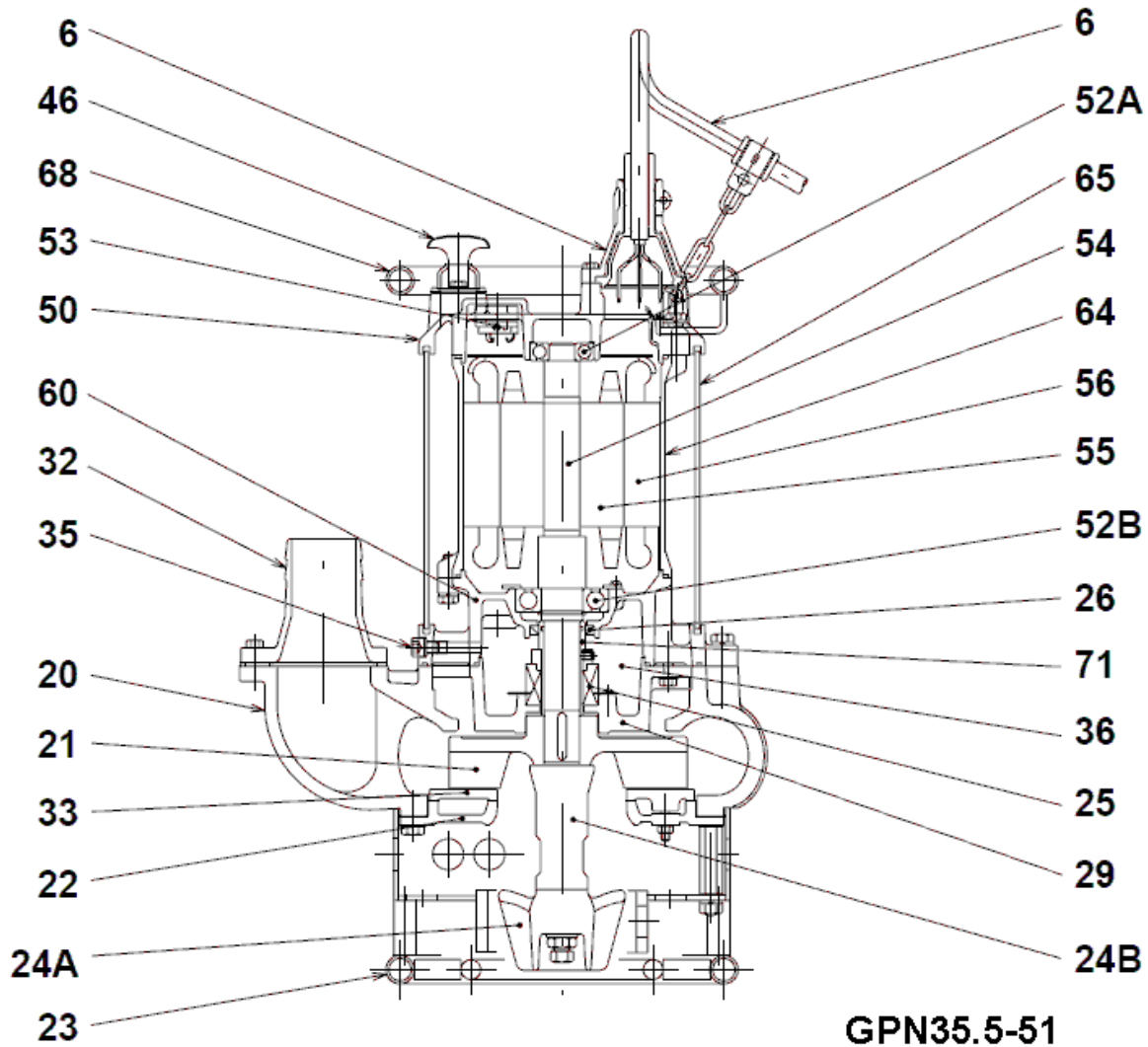
CWL: Continuous running water level  
LWL: Lowest running water level

 **TSURUMI PUMP**

Tsurumi Europe GmbH  
15.10.2018 V.18 / 1.10.2015

Helstorfer Str. 14 \* 40472 Düsseldorf \* Germany  
Tel.: +49-211-4179373 sales@tsurumi.eu  
Fax: +49-211-417937-480 www.tsurumi.eu

# Sectional drawing GPN35.5-51



**GPN35.5-51**

No.	Description	Remark	No.	Description	Remark
1	Cable	20m NSSHÖU	52A	Upper bearing	6305ZZC3
6	Stuffing box	FC200 (EN-GJL-200)	52B	Lower bearing	6308ZZC3
20	Pump casing	FC200 (EN-GJL-200)	53	Motor Protector 380/400/415V-50Hz KA314-HRXL00 (H.C)	
21	Impeller	Chromium iron casting	54	Shaft	DIN 1.7220 (chromium molybdenum)
22	Suction cover	FC200 (EN-GJL-200)	55	Rotor	.
23	Strainer	Steel plate / steel pipe	56	Stator	.
24	Agitator	Chromium iron casting	60	Bearing Housing	FC150 (EN-GJL-150)
25	Mechanical seal	NH-40	64	Motor Frame	FC150 (EN-GJL-150)
26	Oil seal	TC45629	65	Outer Cover	Construction steel SS400
29	Oil casing	FC200 (EN-GJL-200)	68	Handle	electroplated steel pipe
32	Discharge coupling	FC200 (EN-GJL-200)	71	Shaft protection sleeve	SUS304 (EN-X5CrNi18-10)
33	Suction cover	Chromium iron casting			
35	Oil screw	SUS304 (EN-X5CrNi18-10)			
36	Lubricant	Turbine oil (ISO VG32)			
46	Air vent valve	Steel plate			
50	Motor cover	FC150 (EN-GJL-150)			