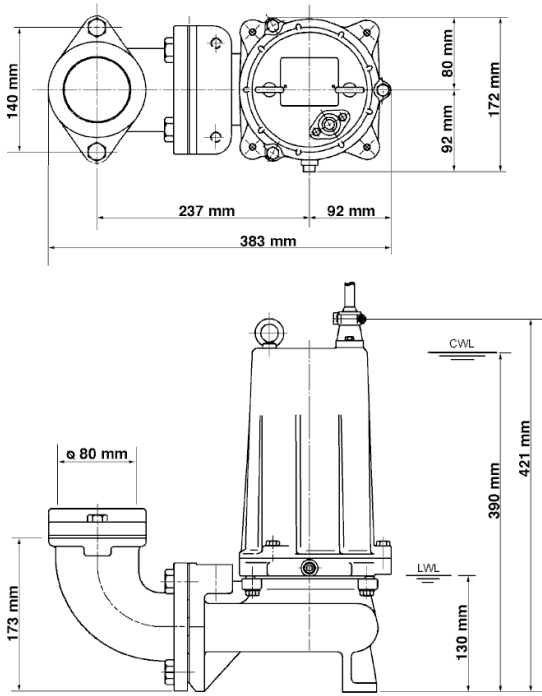
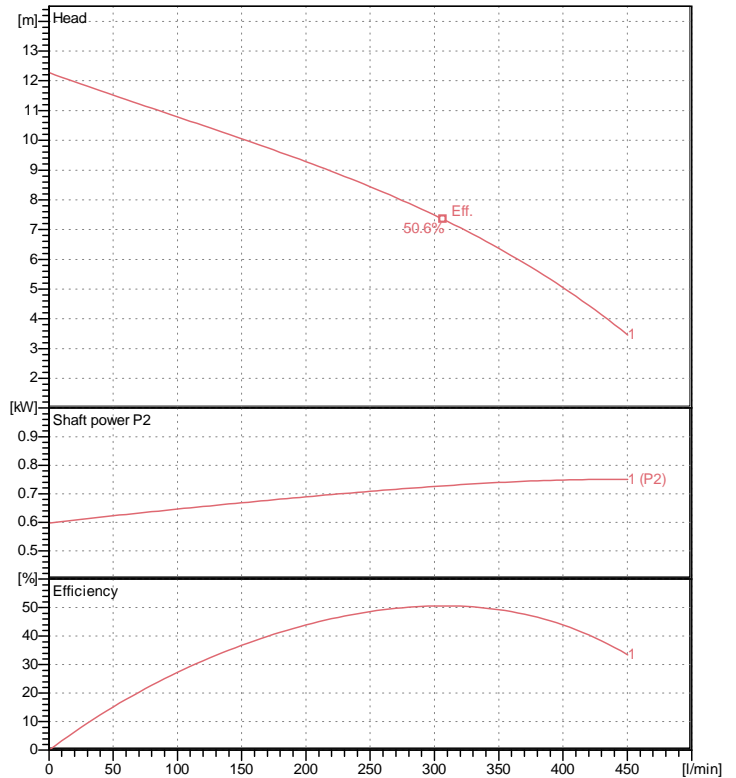


Data sheet 80U2.75-55



80U2.75-55

CWL: Continuous running water level
LWL: Lowest running water level



Specification

Electric submersible pump
Degree of protection IP 68
Depth of submersion max. 10 m
Type of impeller Vortex impeller
Free passage 46 mm
Suitable for:
waste water and liquid carrying

Electric motor

Dry-type submersible induction motor
Insulation class E 2Poles 2810 1/min
Starting mode Directly
Rated voltage 400 V 50 Hz 3~
Power uptake 1.23 kW
Rated power 0.75 kW
Rated current 2.1 A
Start current 8.5 A

Cable

10m H07RN-F 4Cx1,5mm²

Motor Protection

Circle thermal protector
(snap-action bi-metal device)

Shaft seal

Double inside mechanical seal in oil bath
additional lubrication by oil lifting device

Primary seal
Silicon carbide on ceramic
Secondary seal
Ceramic on carbon

Bearings

Shielded ball bearings, maintenance-free

Materials

Impeller FC200 (EN-GJL-200)
Pump casing FC200 (EN-GJL-200)
Motor Frame FC150 (EN-GJL-150)
Shaft SUS403 (EN-X6Cr13)

Discharge size

80mm screwed-in mating flange

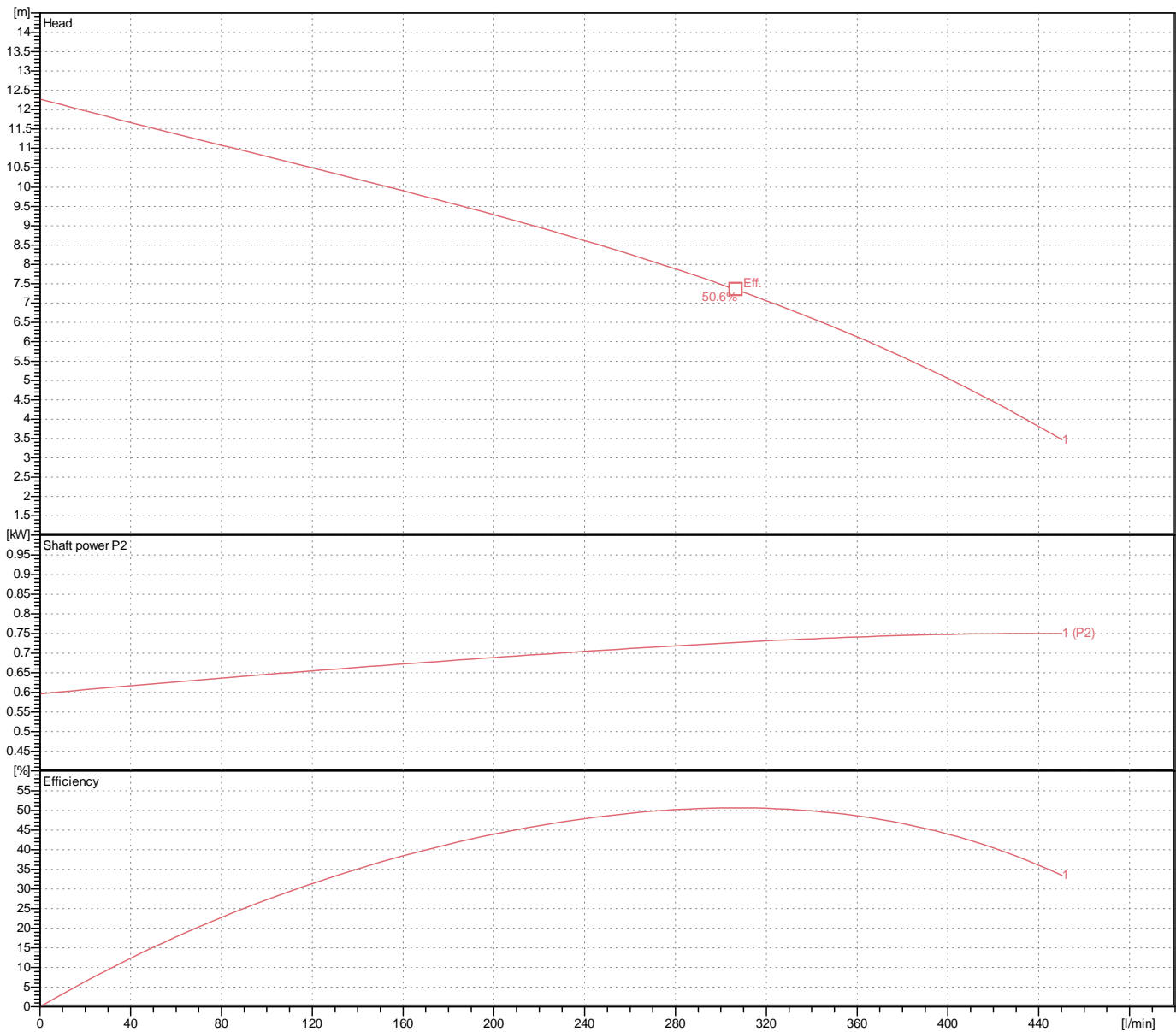
Weight

29 kg (dry weight of the pump only without cable)

Performance curve

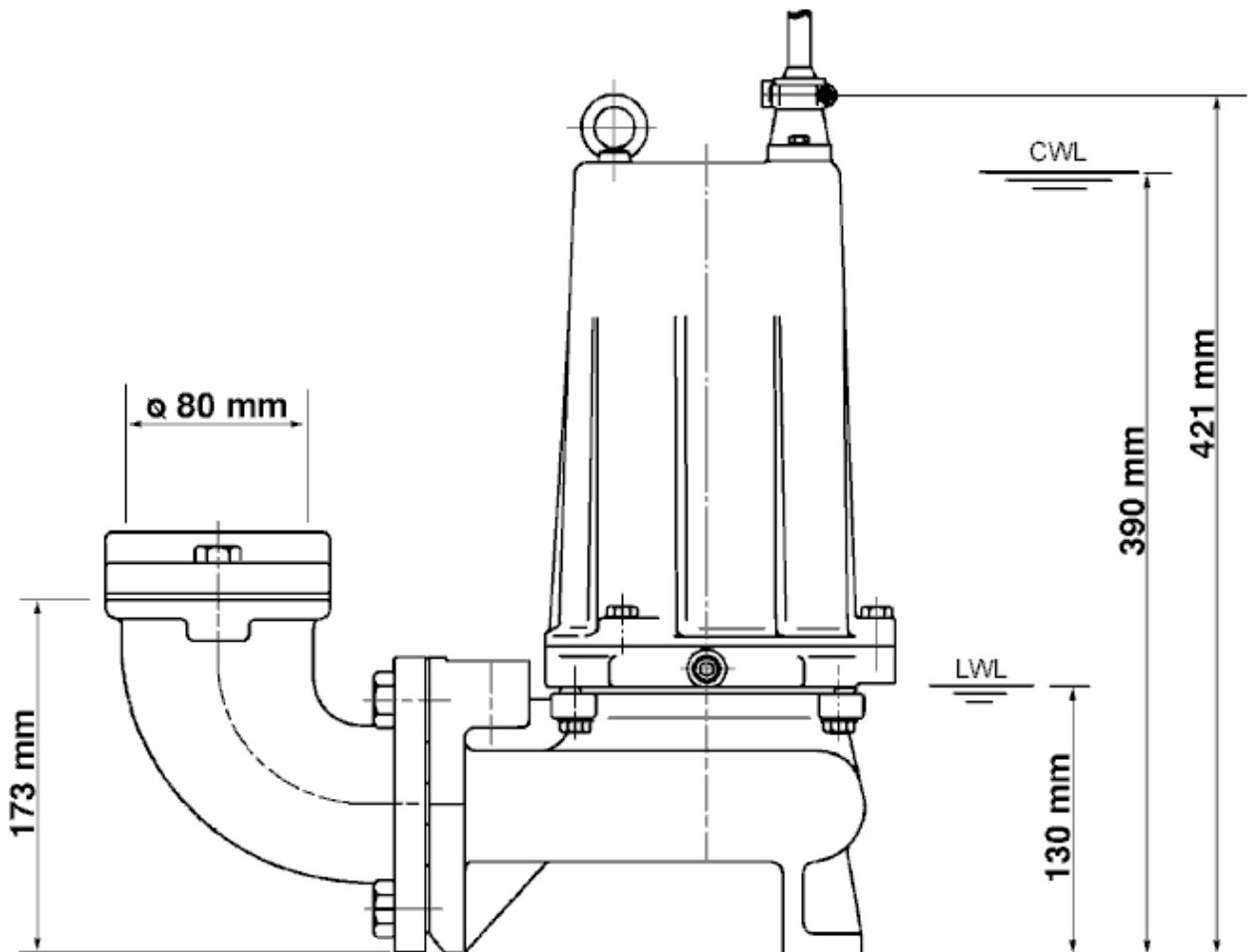
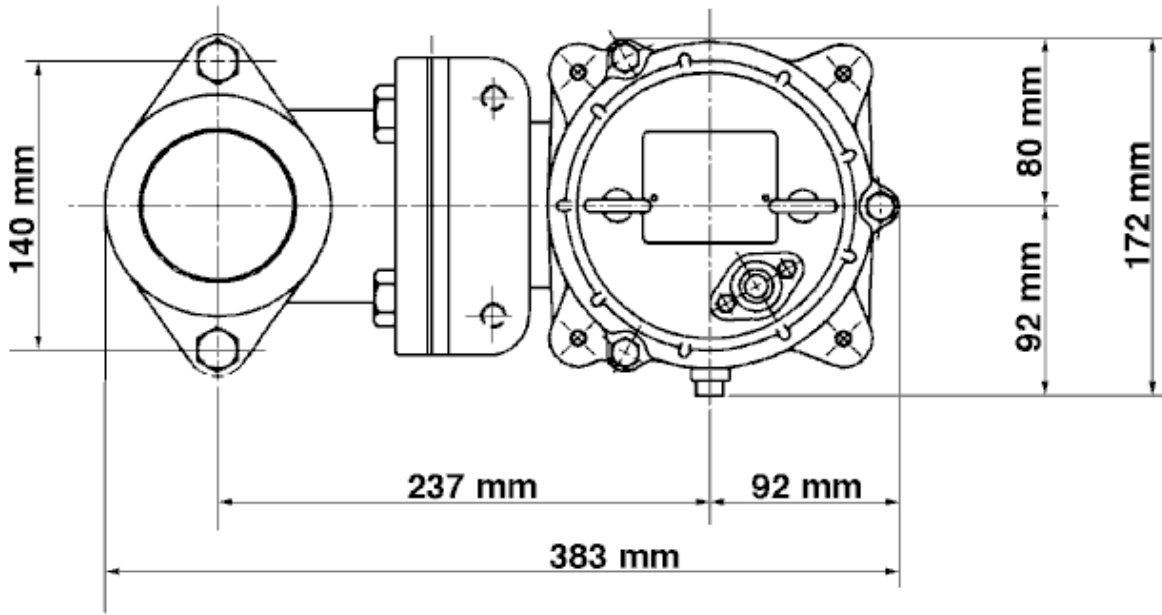
80U2.75-55

Discharge port	3"
Head	12.3 m
Flow	450.3 l/min
Rated power	0.75 kW
Power input	1.23 kW
Phases	3~
Voltages	400 V
Frequency	50 Hz
Rated current	2.1 A
Starting current	8.51 A
Number of poles	2
Speed	2810 1/min
Starting mode	Directly
Insulation class	E



Dimensions

80U2.75-55



80U2.75-55

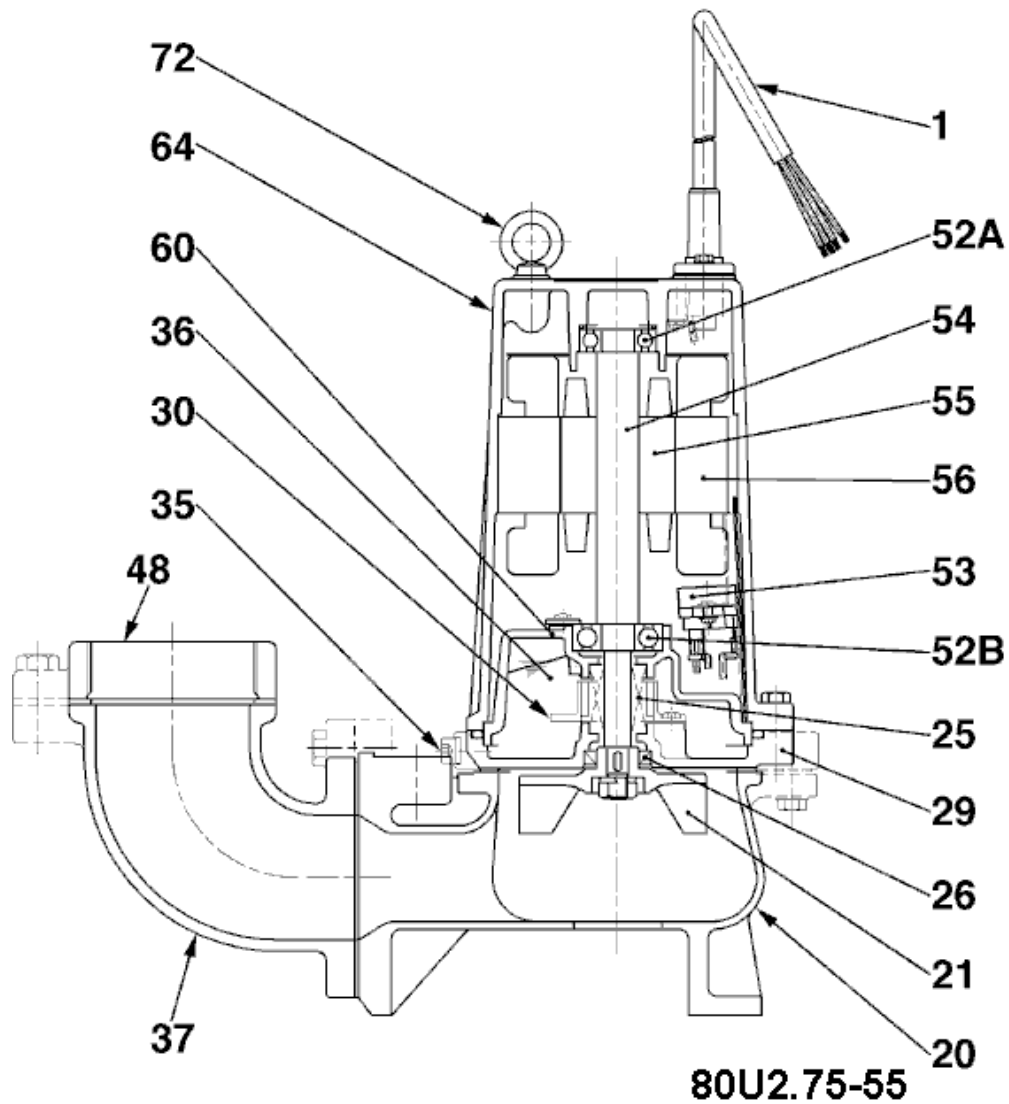
CWL: Continuous running water level
LWL: Lowest running water level

 **TSURUMI PUMP**

Tsurumi Europe GmbH
17.10.2017 V.18 / 1.10.2015

Heltorfer Str. 14 * 40472 Düsseldorf * Germany
Tel.: +49-211-4179373 sales@tsurumi.eu
Fax: +49-211-417937-480 www.tsurumi.eu

Sectional drawing 80U2.75-55



No.	Description	Remark	No.	Description	Remark
1	Cable	H07RN-F	56	Stator	.
20	Pump casing	FC200 (EN-GJL-200)	64	Motor Frame	FC150 (EN-GJL-150)
21	Impeller	FC200 (EN-GJL-200)	72	Eye screw (2x)	SUS304 (EN-X5CrNi18-10)
25	Mechanical seal	W-14HL			
26	Oil seal	SC-22357			
29	Oil casing	FC150 (EN-GJL-150)			
30	Oil distributor	Plastic			
35	Oil screw	SUS304 (EN-X5CrNi18-10)			
36	Lubricant	Turbine oil (ISO VG32)			
37	Discharge bend	FC200 (EN-GJL-200)			
48	Screwed Flange	FC200 (EN-GJL-200)			
52A	Upper bearing	6203ZZC3			
52B	Lower bearing	6303ZZC3			
53	Motor Protector 380/400/415V	50Hz KA314-HRXL00 (H.C)			
54	Shaft	SUS403 (EN-X6Cr13)			
55	Rotor	.			