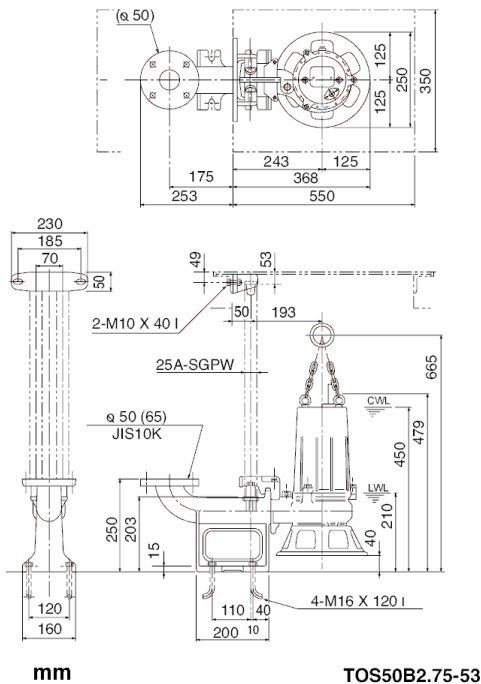
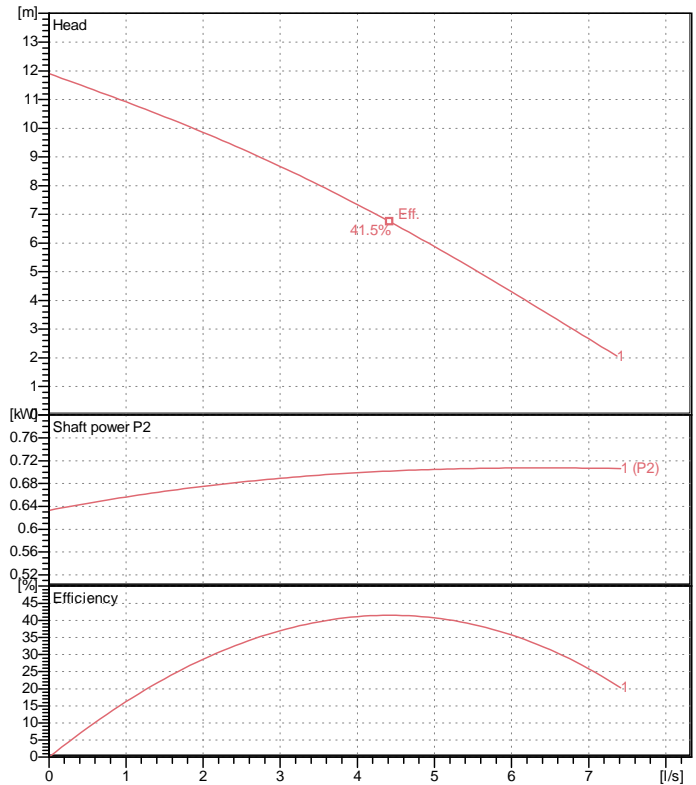


Data sheet 50B2.75-53



CWL: Continuous running water level
LWL: Lowest running water level



Specification

Electric submersible pump
Degree of protection IP 68
Depth of submersion max. 15 m
Type of impeller Single channel impeller
Free passage 20 mm
Suitable for:
sewage water

Electric motor

Dry-type submersible induction motor
Insulation class E 2Poles 2810 1/min
Starting mode Directly
Rated voltage 400 V 50 Hz 3~
Power uptake 1.14 kW
Rated power 0.75 kW
Rated current 1.9 A
Start current 8.5 A

Cable

10m H07RN-F 4Cx1,5mm²

Motor Protection

Circle thermal protector
(snap-action bi-metal device)

Shaft seal

Double inside mechanical seal in oil bath
additional lubrication by oil lifting device

Primary seal
Silicon carbide on silicon carbide
Secondary seal
Ceramic on carbon

Bearings

Shielded ball bearings, maintenance-free

Materials

Impeller	FC200 (EN-GJL-200)
Pump casing	FC200 (EN-GJL-200)
Suction cover	FC200 (EN-GJL-200)
Motor Frame	FC150 (EN-GJL-150)
Shaft	SUS403 (EN-X6Cr13)

Discharge size

2" (50mm) special flange / inside thread
guide rail fitting optional

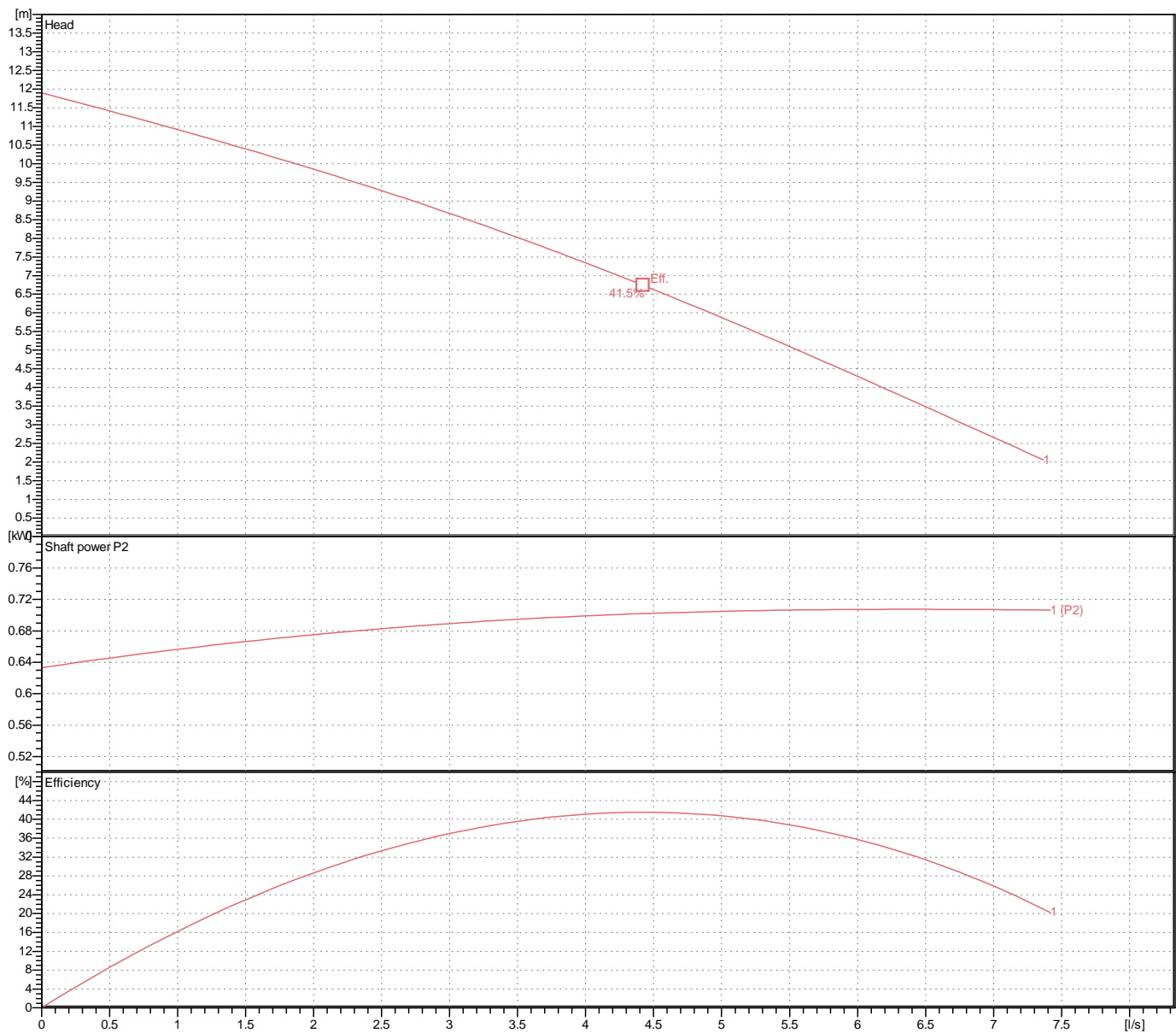
Weight

24 kg (dry weight of the pump only without cable)

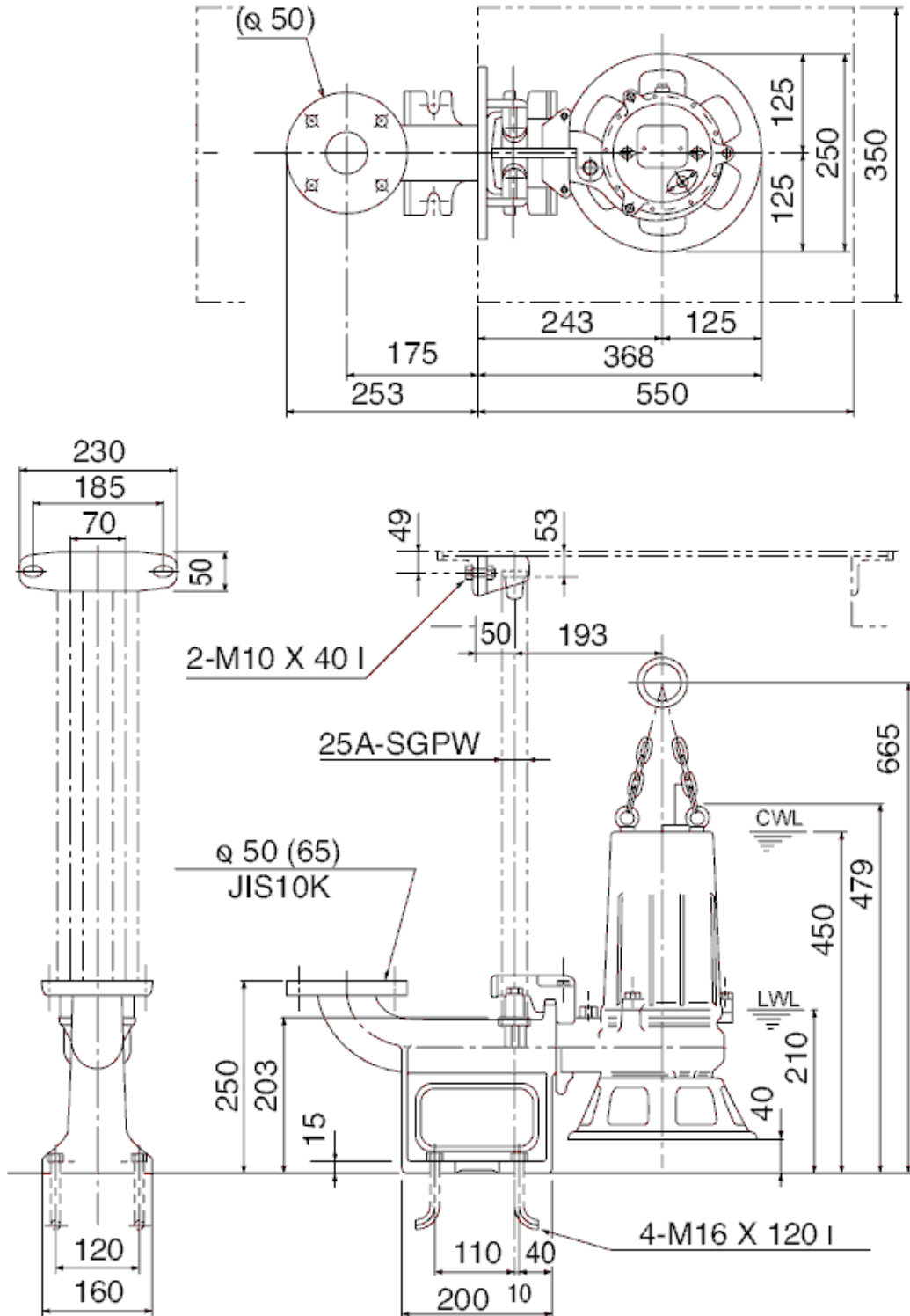
Performance curve

50B2.75-53

Discharge port	2"
Head	11.9 m
Flow	7.4 l/s
Rated power	0.75 kW
Power input	1.14 kW
Phases	3~
Voltages	400 V
Frequency	50 Hz
Rated current	1.9 A
Starting current	8.49 A
Number of poles	2
Speed	2810 1/min
Starting mode	Directly
Insulation class	E



Dimensions TOS50B2.75-53



mm

TOS50B2.75-53

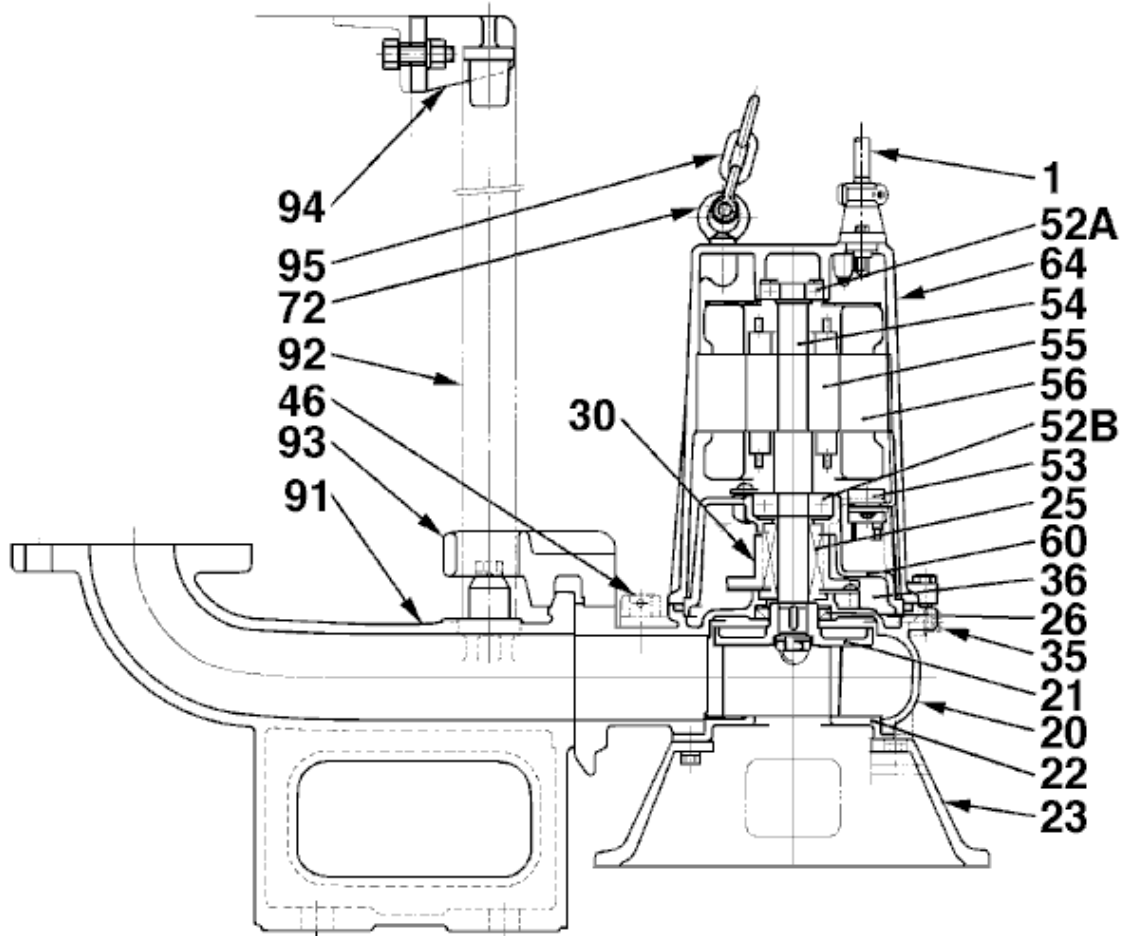
CWL: Continuous running water level
LWL: Lowest running water level



Tsurumi Europe GmbH
16.10.2018 V.18 / 1.10.2015

Heltorf Str. 14 * 40472 Düsseldorf * Germany
Tel.: +49-211-4179373 sales@tsurumi.eu
Fax: +49-211-417937-480 www.tsurumi.eu

Sectional drawing TOS50B2.75-53



TOS50B2.75-53

No.	Description	Remark	No.	Description	Remark
1	Cable	H07RN-F	56	Stator	.
20	Pump casing	FC200 (EN-GJL-200)	60	Bearing Housing	FC150 (EN-GJL-150)
21	Impeller	FC200 (EN-GJL-200)	64	Motor Frame	FC150 (EN-GJL-150)
22	Suction cover	FC200 (EN-GJL-200)	72	Eye screw (2x)	SUS304 (EN-X5CrNi18-10)
23	Stand	FCD45 (EN-GJS-450-10)	91	duck foot bend	FC200 (EN-GJL-200)
25	Mechanical seal	H-20A	92	Guide pipe (option) (2x)	electroplated steel pipe
26	Oil seal	TC32488	93	guide support	FC200 (EN-GJL-200)
30	Oil distributor	Plastic	94	Guide pipe holder	FCD45 (EN-GJS-450-10)
35	Oil screw	SUS304 (EN-X5CrNi18-10)	95	Chain	Construction steel SS400
36	Lubricant	Turbine oil (ISO VG32)			
46	Air vent screw	Nylon			
52A	Upper bearing	6203ZZC3			
52B	Lower bearing	6304ZZC3			
53	Motor Protector 380/400/415V	50Hz KA314-HRXL00 (H.C)			
54	Shaft	SUS403 (EN-X6Cr13)			
55	Rotor	.			