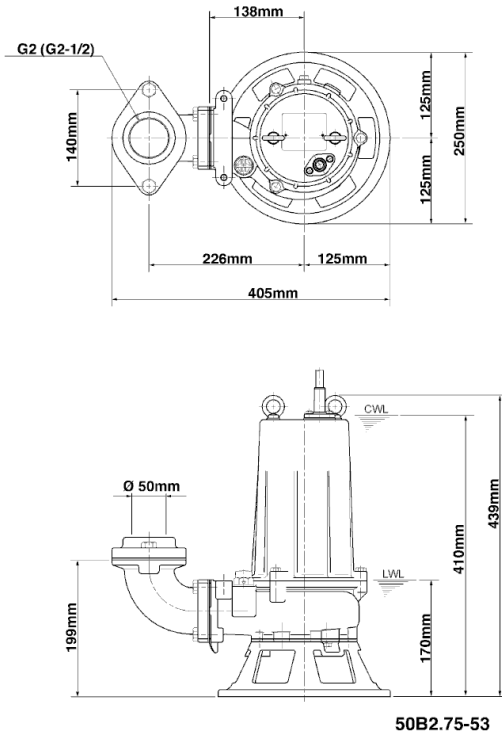
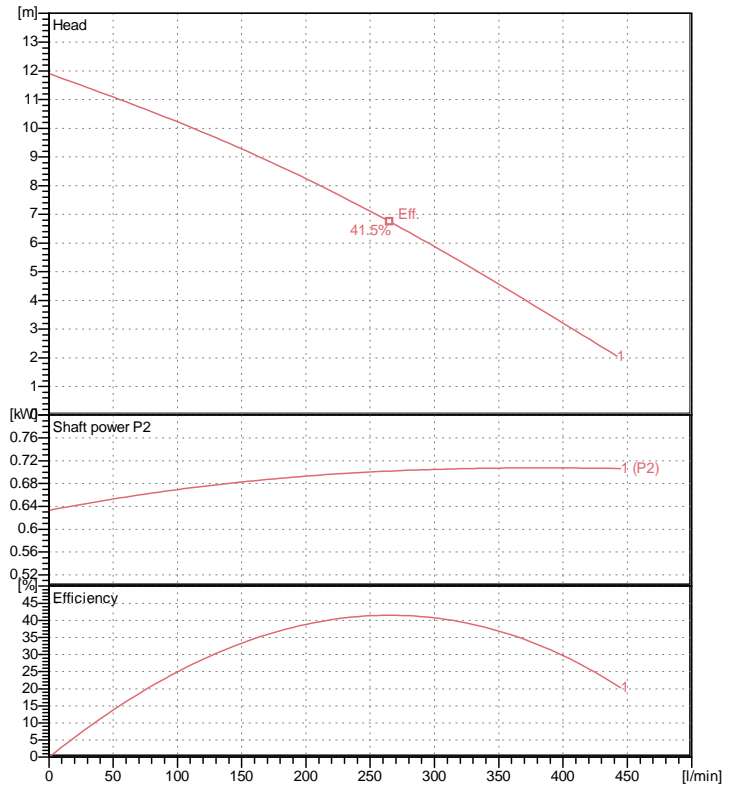


# Data sheet 50B2.75-53



CWL: Continuous running water level  
LWL: Lowest running water level



## Specification

Electric submersible pump  
Degree of protection IP 68  
Depth of submersion max. 15 m  
Type of impeller Single channel impeller  
Free passage 20 mm  
Suitable for:  
sewage water

## Electric motor

Dry-type submersible induction motor  
Insulation class E 2Poles 2810 1/min  
Starting mode Directly  
Rated voltage 400 V 50 Hz 3~  
Power uptake 1.14 kW  
Rated power 0.75 kW  
Rated current 1.9 A  
Start current 8.5 A

## Cable

10m H07RN-F 4Cx1,5mm<sup>2</sup>

## Motor Protection

Circle thermal protector  
(snap-action bi-metal device)

## Shaft seal

Double inside mechanical seal in oil bath  
additional lubrication by oil lifting device

Primary seal  
Silicon carbide on silicon carbide  
Secondary seal  
Ceramic on carbon

## Bearings

Shielded ball bearings, maintenance-free

## Materials

Impeller	FC200 (EN-GJL-200)
Pump casing	FC200 (EN-GJL-200)
Suction cover	FC200 (EN-GJL-200)
Motor Frame	FC150 (EN-GJL-150)
Shaft	SUS403 (EN-X6Cr13)

## Discharge size

2" (50mm) special flange / inside thread  
guide rail fitting optional

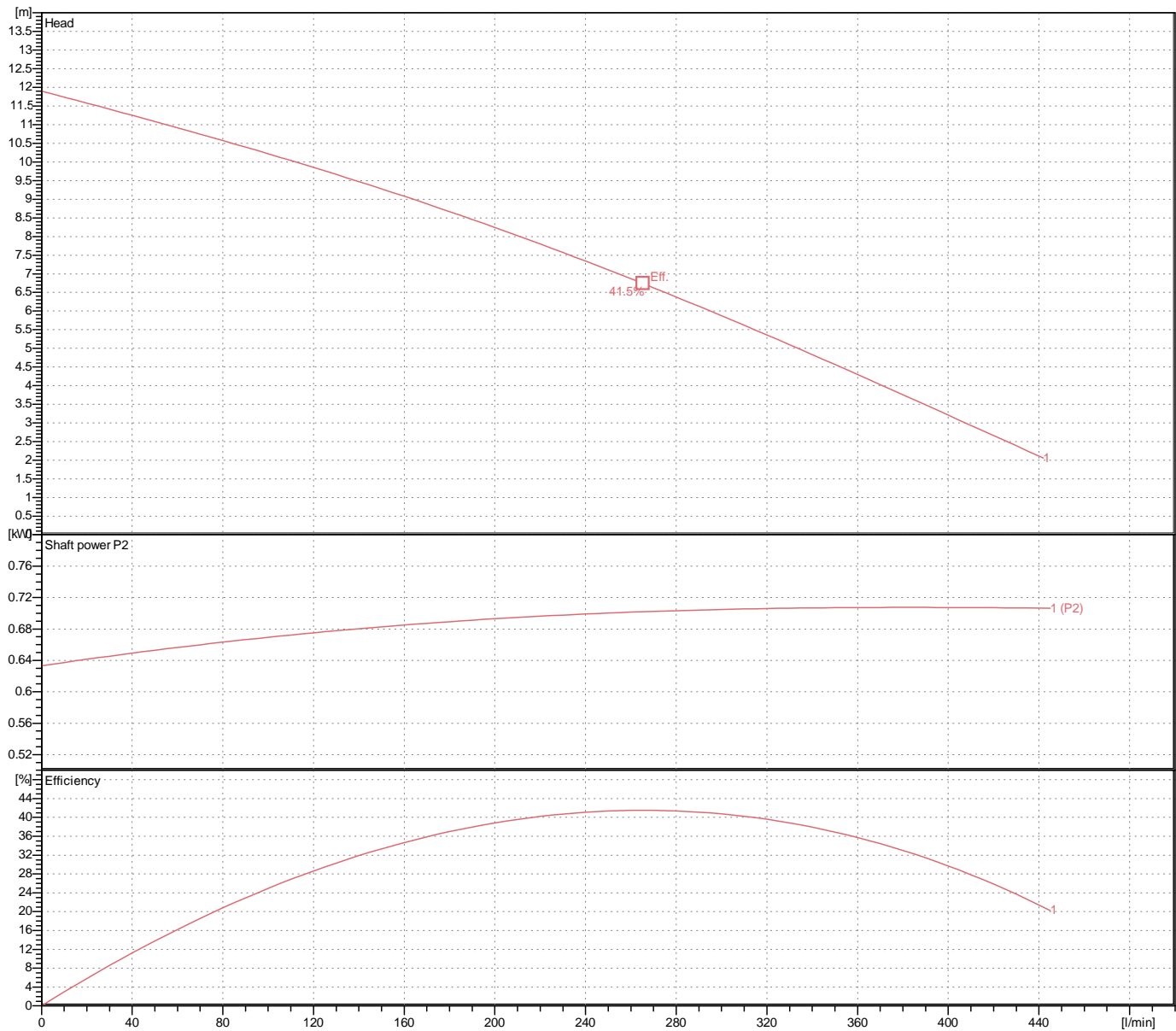
## Weight

25 kg (dry weight of the pump only without cable)

# Performance curve

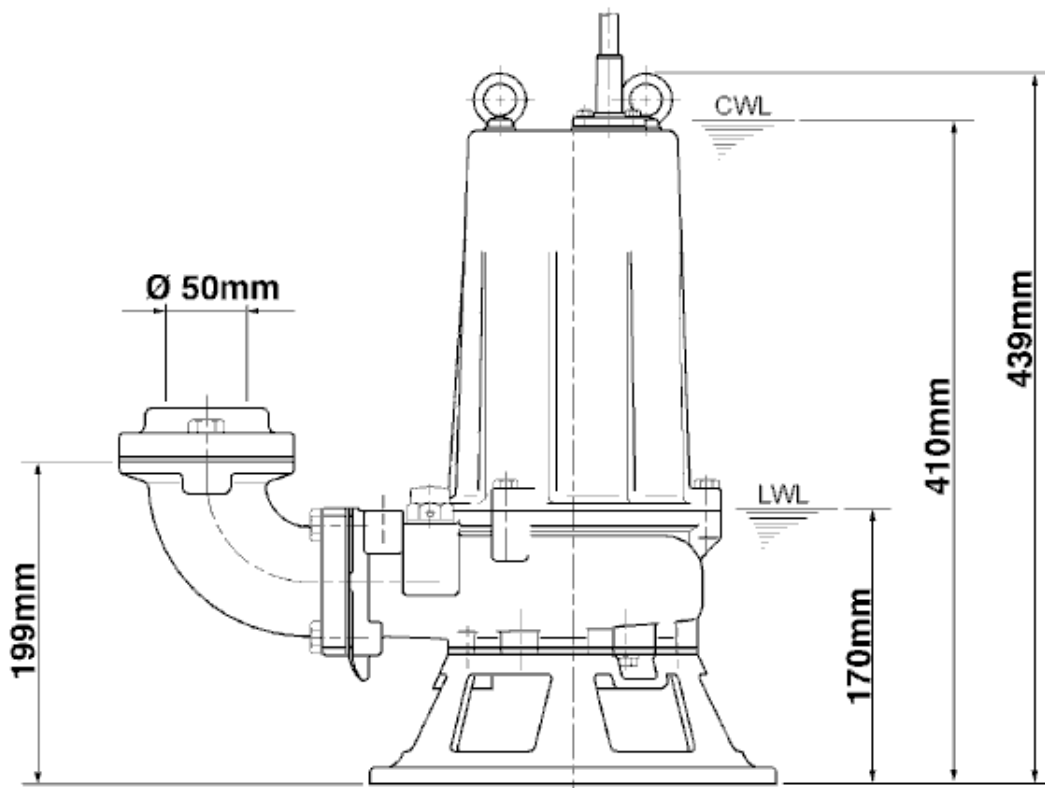
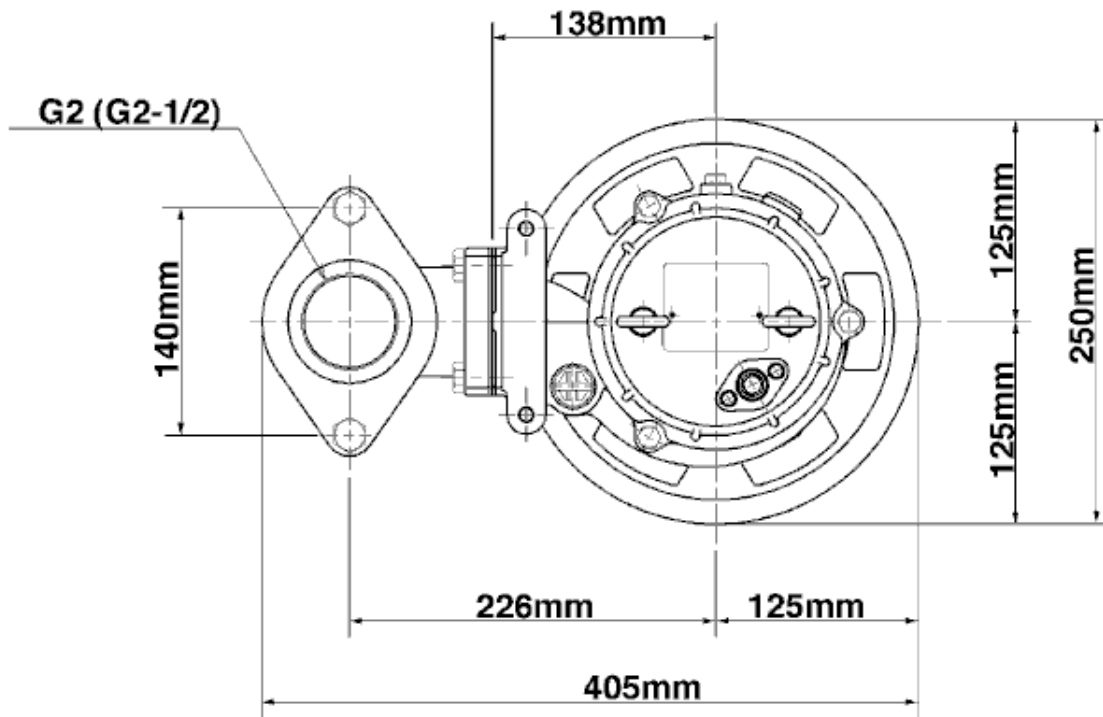
## 50B2.75-53

Discharge port	2"
Head	11.9 m
Flow	441.9 l/min
Rated power	0.75 kW
Power input	1.14 kW
Phases	3~
Voltages	400 V
Frequency	50 Hz
Rated current	1.9 A
Starting current	8.49 A
Number of poles	2
Speed	2810 1/min
Starting mode	Directly
Insulation class	E



# Dimensions

## 50B2.75-53



**50B2.75-53**

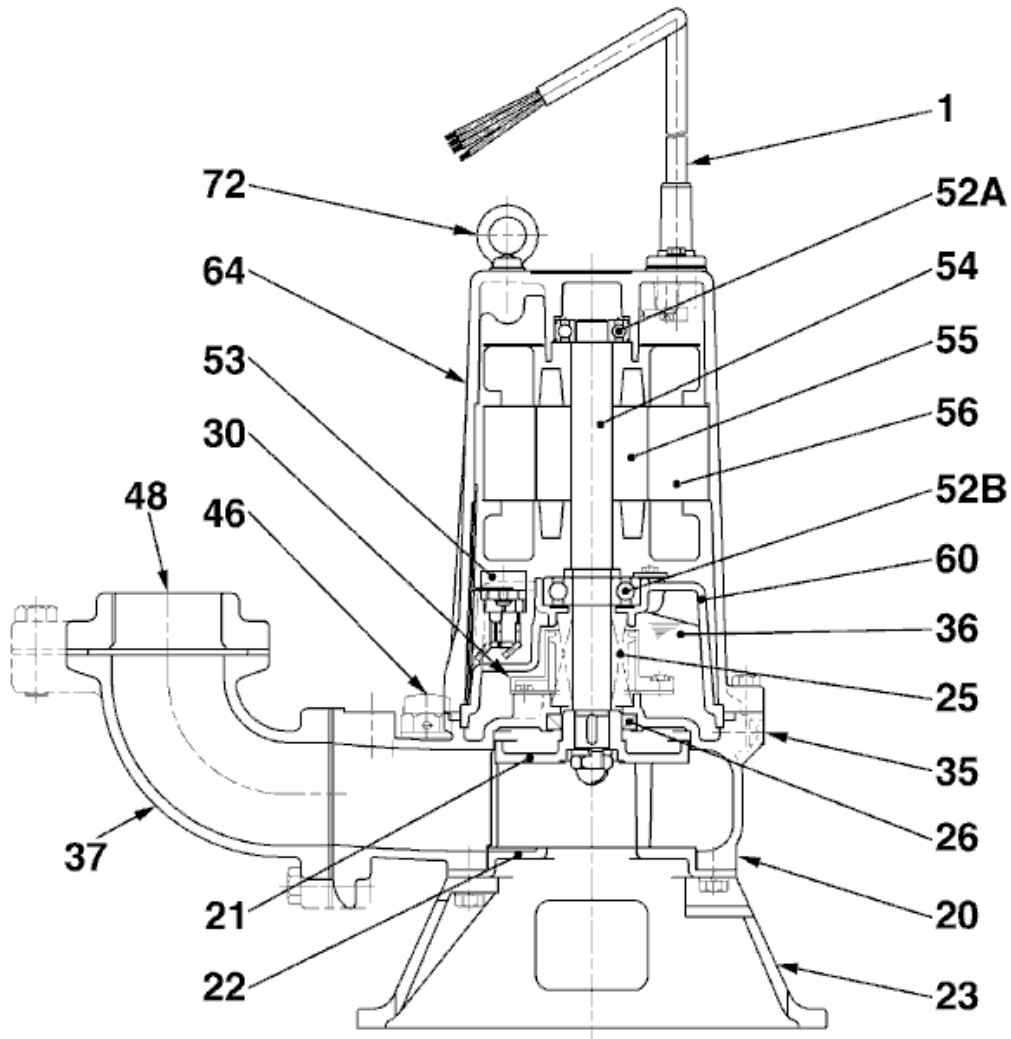
CWL: Continuous running water level  
LWL: Lowest running water level

 **TSURUMI PUMP**

Tsurumi Europe GmbH  
15.12.2017 V.18 / 1.10.2015

Heltorf Str. 14 \* 40472 Düsseldorf \* Germany  
Tel.: +49-211-4179373 sales@tsurumi.eu  
Fax: +49-211-417937-480 www.tsurumi.eu

# Sectional drawing 50B2.75-53



**50B2.75-53**

No.	Description	Remark	No.	Description	Remark
1	Cable	H07RN-F	54	Shaft	SUS403 (EN-X6Cr13)
20	Pump casing	FC200 (EN-GJL-200)	55	Rotor	.
21	Impeller	FC200 (EN-GJL-200)	56	Stator	.
22	Suction cover	FC200 (EN-GJL-200)	60	Bearing Housing	FC150 (EN-GJL-150)
23	Stand	FCD45 (EN-GJS-450-10)	64	Motor Frame	FC150 (EN-GJL-150)
25	Mechanical seal	H-20A	72	Eye screw (2x)	SUS304 (EN-X5CrNi18-10)
26	Oil seal	TC32488			
30	Oil distributor	Plastic			
35	Oil screw	SUS304 (EN-X5CrNi18-10)			
36	Lubricant	Turbine oil (ISO VG32)			
37	Discharge bend	FC200 (EN-GJL-200)			
46	Air vent screw	Nylon			
48	Screwed Flange	FC200 (EN-GJL-200)			
52A	Upper bearing	6203ZZC3			
52B	Lower bearing	6304ZZC3			
53	Motor Protector 380/400/415V-50Hz KA314-HRXL00 (H.C)				