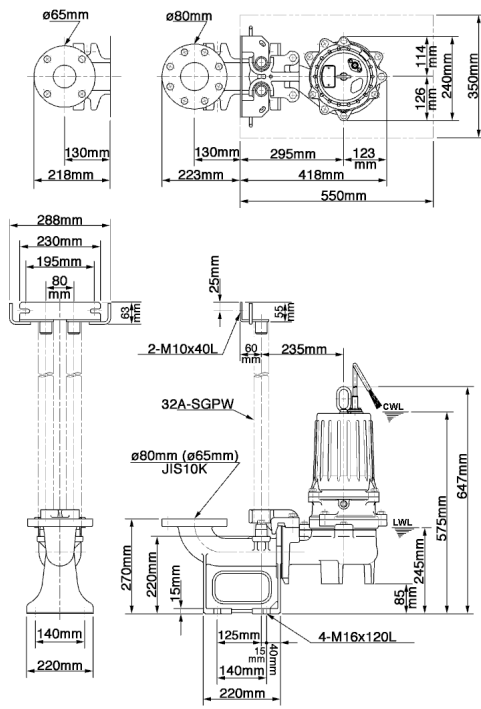
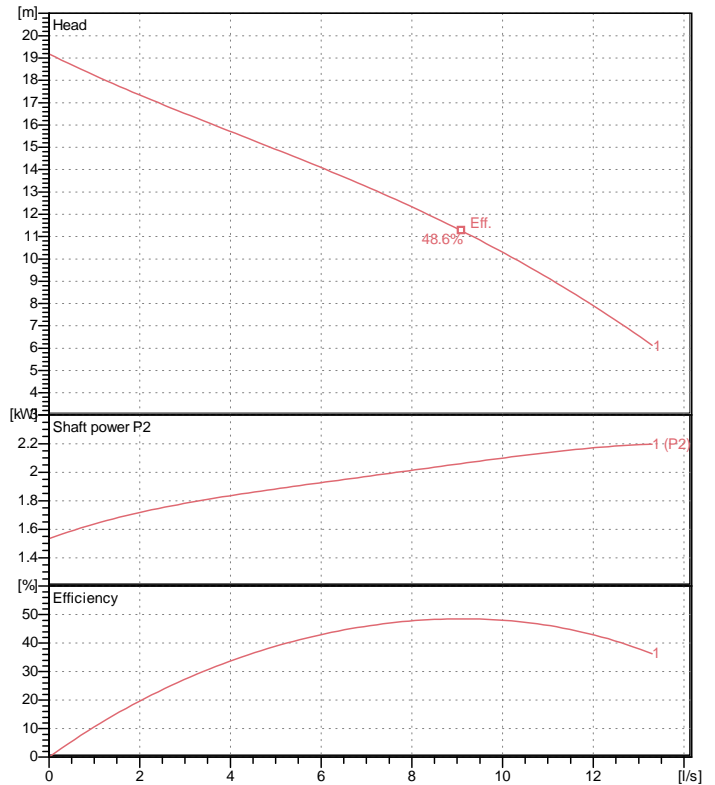


# Data sheet 80U22.2-52



TOS80U22.2-52 (A-11638-1)

CWL: Continuous running water level  
LWL: Lowest running water level



## Specification

Electric submersible pump  
Degree of protection IP 68  
Depth of submersion max. 15 m  
Type of impeller Vortex impeller  
Free passage 56 mm  
Suitable for:  
waste water and liquid carrying

## Electric motor

Dry-type submersible induction motor  
Insulation class F 2Poles 2840 1/min  
Starting mode Directly  
Rated voltage 400 V 50 Hz 3~  
Power uptake 3.06 kW  
Rated power 2.20 kW  
Rated current 4.9 A  
Start current 34.0 A

## Cable

10m H07RN-F 4Cx1,5mm<sup>2</sup>

## Motor Protection

Circle thermal protector  
(snap-action bi-metal device)

## Shaft seal

Double inside mechanical seal in oil bath  
additional lubrication by oil lifting device

Primary seal  
Silicon carbide on ceramic  
Secondary seal  
Ceramic on carbon

## Bearings

Shielded ball bearings, maintenance-free

## Materials

Impeller FC200 (EN-GJL-200)  
Pump casing FC200 (EN-GJL-200)  
Motor housing FC150 (EN-GJL-150)  
Shaft SUS420J2 (EN-X30Cr13)

## Discharge size

80mm screwed-in mating flange  
guide rail fitting optional

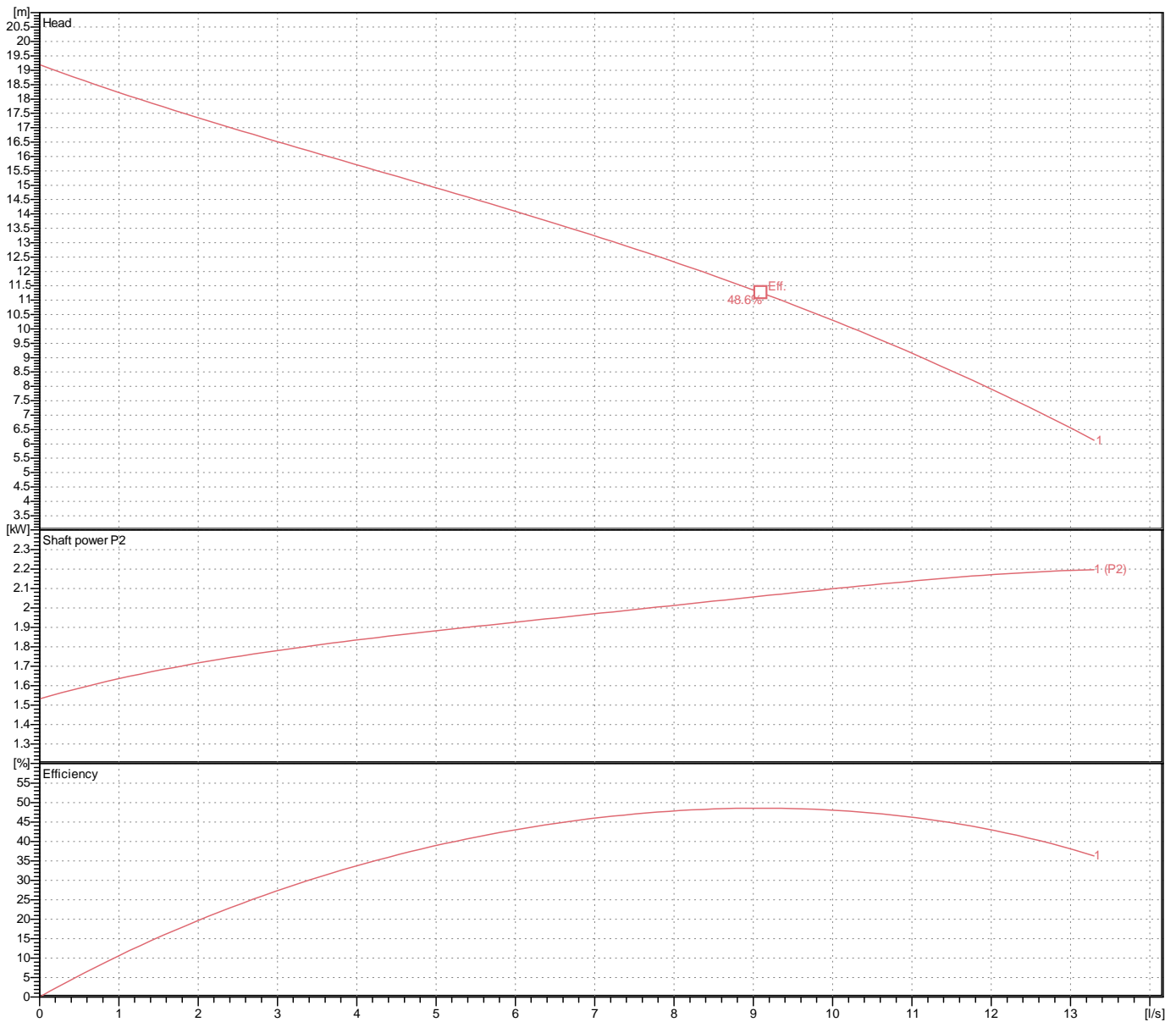
## Weight

51 kg (dry weight of the pump only without cable)

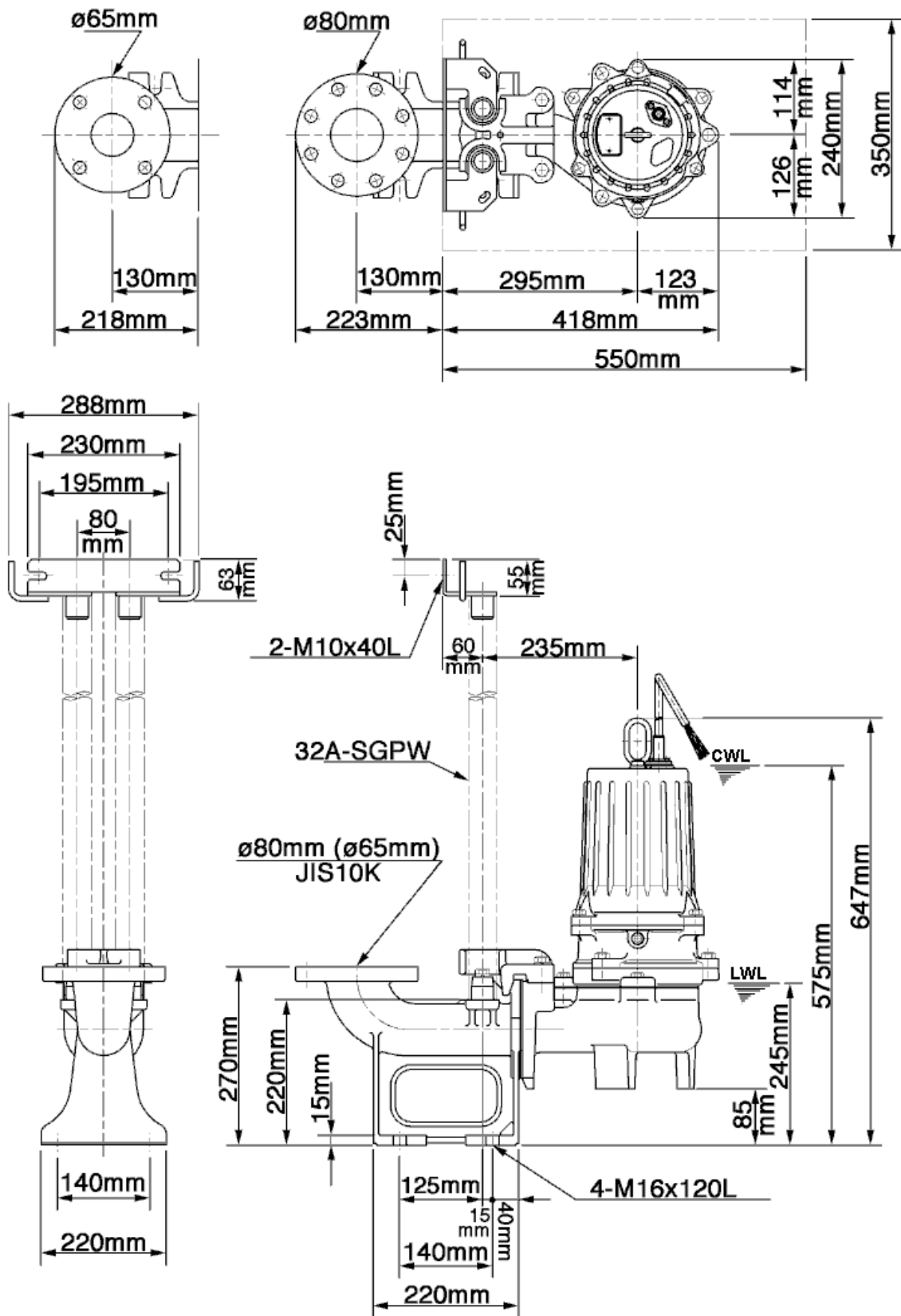
# Performance curve

## 80U22.2-52

Discharge port	3"
Head	19.2 m
Flow	13.3 l/s
Rated power	2.20 kW
Power input	3.06 kW
Phases	3~
Voltages	400 V
Frequency	50 Hz
Rated current	4.9 A
Starting current	34.01 A
Number of poles	2
Speed	2840 1/min
Starting mode	Directly
Insulation class	F



# Dimensions TOS80U22.2-52



TOS80U22.2-52 (A-11638-1)

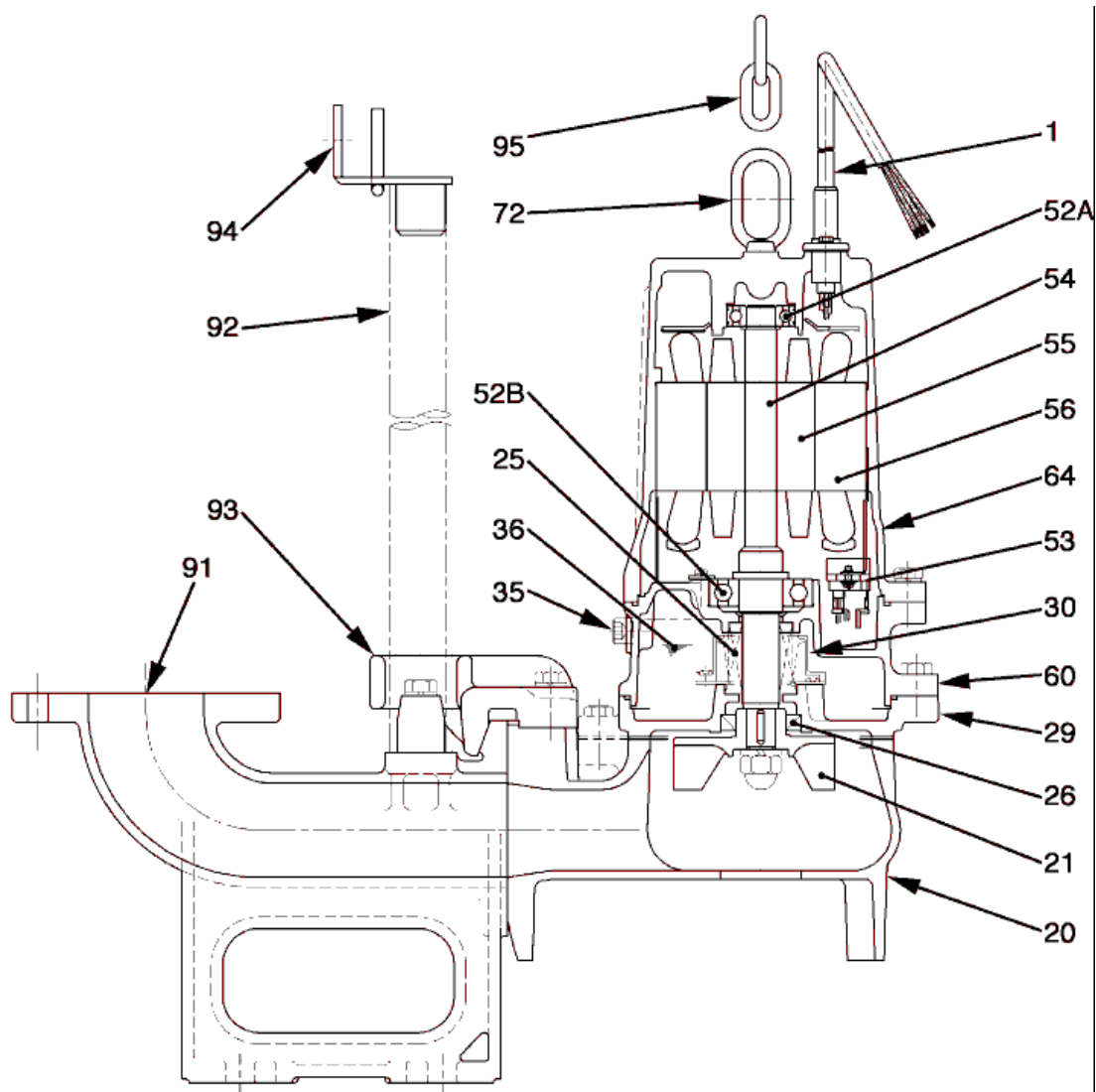
CWL: Continuous running water level  
LWL: Lowest running water level

 **TSURUMI PUMP**

Tsurumi Europe GmbH  
17.10.2018 V.18 / 1.10.2015

Heltorf Str. 14 \* 40472 Düsseldorf \* Germany  
Tel.: +49-211-4179373 sales@tsurumi.eu  
Fax: +49-211-417937-480 www.tsurumi.eu

# Sectional drawing TOS80U22.2-52



TOS80U22.2-52 (A-11647-1)

No.	Description	Remark	No.	Description	Remark
1	Cable	H07RN-F	64	Motor housing	FC150 (EN-GJL-150)
20	Pump casing	FC200 (EN-GJL-200)	72	Eye screw	SUS304 (EN-X5CrNi18-10)
21	Impeller	FC200 (EN-GJL-200)	91	guide rail fitting	FC200 (EN-GJL-200)
25	Mechanical seal	H-25A	92	Guide pipe (option) (2x)	Galvanized steel pipe
26	Oil seal	DD-355511	93	guide support	FCD45 (EN-GJS-450-10)
29	Oil casing	FC200 (EN-GJL-200)	94	Guide pipe holder	SUS304 (EN-X5CrNi18-10)
30	Oil distributor	Plastic	95	Lifting chain	Construction steel SS400
35	Oil screw	SUS304 (EN-X5CrNi18-10)			
36	Lubricant	Turbine oil (ISO VG32)			
52A	Upper bearing	6304ZZC3			
52B	Lower bearing	6306ZZC3			
53	Motor Protector 380/400/415V	50Hz KA314-HRXL00 (H.C)			
54	Shaft	SUS420J2 (EN-X30Cr13)			
55	Rotor	.			
56	Stator	.			
60	bearing housing	FC150 (EN-GJL-150)			