

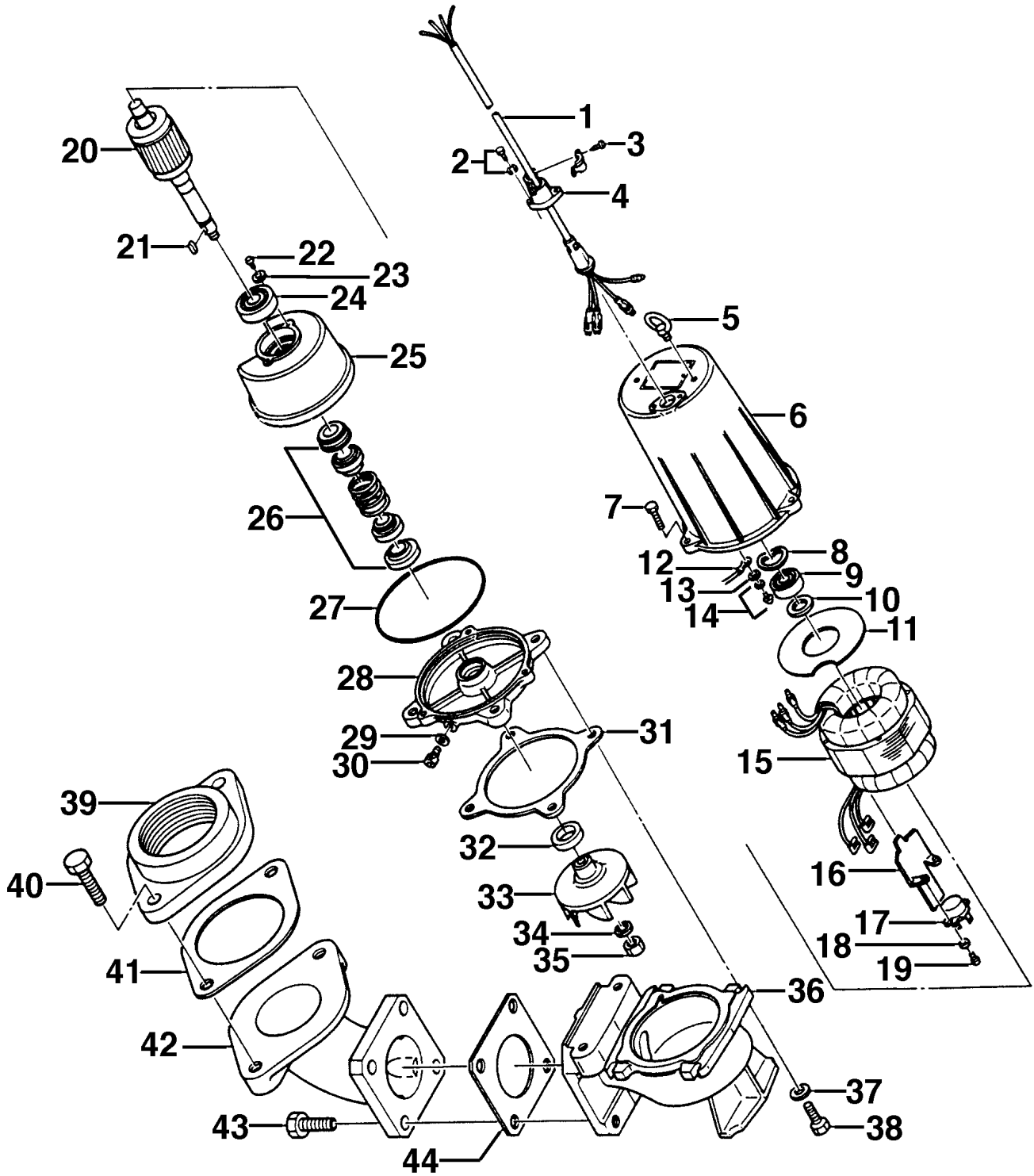
**80U2.75 (U-80-8)**

Kontroll-Nr. --

2018-10-19 V.18 / 1.10.2015

80U2.75 (U-80-8)			
Item	Item no.	Description	Quant.
1	001-TEG-31	Cabtyre Cable Set (20m) H07RN-F4Cx1,5mm <sup>2</sup> with gland	1
1	M01-TEG-31	Cabtyre Cable Set (20m) NSSHÖU 4Cx1,5mm <sup>2</sup>	1
2	140-427-17	Hex.Bolt (w/Plain Washer) M5x15 SUS304 (EN X5CrNi18-10)	2
3	143-071-24	Tapping Screw M4x12 SUS304 (EN X5CrNi18-10) Stainless Steel	1
4	003-190-10	Gland SUS316 (EN X5Cr-Ni-Mo17-12-2)	1
5	072-105-12	Eye Bolt M8 SS	2
6	064-276-23	Motor Frame (2nd) FC	1
7	140-056-11	Hex.Bolt M8x30 SUS304 (EN X5CrNi18-10) Stainless Steel	3
8	142-194-18	Wave Washer #6203 SK-5	1
9	052-102-17	Bearing 6203ZZC3	1
10	061-152-10	Bearing Collar d17.1xd23x1.6t Kaltgewalztes Blech	1
11	058-115-11	Lead Wire Protection Plate d52xd115x1t Resin	1
12	009-112-16	Earth Terminal 1.25mm <sup>2</sup>	1
13	142-124-20	Plain Washer M4 SPC	1
14	143-086-22	Pan Screw (w/Spring Washer) M4x8 SWRM	1
15	056-A93-16	Stator (2nd) 440V-60HZ	1
15	056-A98-11	Stator 380V	1
16	127-143-15	Protector Fixing Plate 8-BE2 SPC	1
17	053-239-17	Motor Protector 200/220V-60HZ KA311-DAXL66 (T)	1
17	053-267-14	Motor Protector 380/400/415V-50HZ KA311-DAXL63 (T)	1
18	142-124-20	Plain Washer M4 SPC	2
19	143-016-18	Pan Screw M4x12 SWRM	2
20	055-736-15	Rotor (2nd) w/Bearing	1
21	147-016-10	Impeller Key 4x4x10L SUS403 (EN X6Cr13)	1
22	143-028-13	Pan Screw M5x10 SWRM	2
23	062-187-17	Bearing Fixing Washer d5.5xd18x2.3t SPC	2
24	052-106-11	Bearing 6303ZZC3	1
25	060-230-10	Bearing Housing FC	1
26	025-000-18	Mechanical Seal W-14HC SSIC	1
27	122-072-17	O-Ring P-140 NBR	1
28	029-238-24	Oil Casing U2-8T (FC)	1
29	121-248-13	Packing d8.2xd13.5x2t PE	1
30	035-112-17	Oil Plug M8x12 SUS304 (EN X5CrNi18-10) Stainless Steel	1
31	121-339-12	Packing (O.Casing/P.Casing) d124xd144x3t NBR	1
32	026-178-13	Oil Seal SC-22357 NBR	1
33	021-E01-13	Impeller (50Hz) 50Hz FC	1
34	142-164-19	Spring Washer M10 SUS304 (EN X5CrNi18-10)	1
35	141-006-77	Hex.Nut M10 S45C	1
36	020-001-32	Pump Casing U-65-8 (FC)	1
37	142-127-10	Plain Washer M8 SUS304 (EN X5CrNi18-10) Stainless Steel	4
38	140-057-12	Hex.Bolt M8x35 SUS304 (EN X5Cr18-10)	4
39	048-106-18	Screwed Flange 80mm(P.C.140) FC	1
40	140-099-16	Hex.Bolt M12x40 SUS304 (EN X5CrNi18-10)	2
41	121-137-18	Packing (Screwed Flange) MBT(P.C.140) NBR	1
42	037-118-19	Discharge Bend 80mm(123-17) FC	1
43	140-123-10	Hex.Bolt M16x35 SUS304 (EN X5Cr18-10)	4
44	121-152-19	Packing 145mm2(P.C.145) NBR	1
	173-462-16	Packing & O-Ring Set	1
	##oilVG32	ml Turbine Oil ISO VG32	390

# Exploded View 80U2.75 (U-80-8)



80U2.75