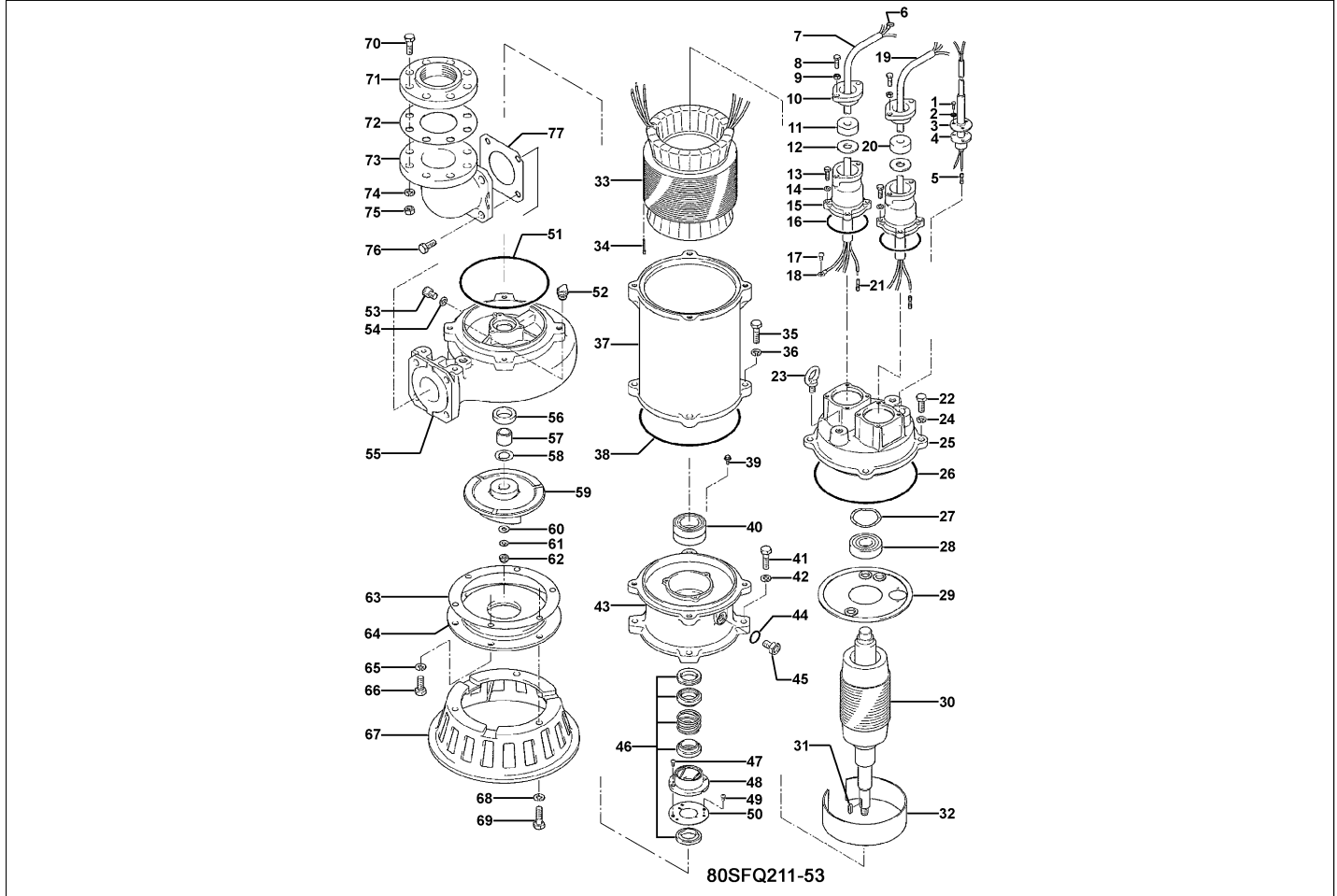


80SFQ211-53

Kontroll-Nr. --

2024-03-15 V.01.02.2023

| Pos.no | Item no. | Description | Qty. | UP / EUR |
|--------|----------|-------------|------|----------|
|--------|----------|-------------|------|----------|



80SFQ211-53

| | | | | |
|-------|------------|---|---|---------------|
| 1.1.1 | 173-000-52 | Packing & O-Ring Set | 1 | |
| 1 | 140-021-20 | Hex.Bolt M5x20 SUS316 (DIN 1.4401) Stainless Steel | 3 | |
| 2 | 142-422-18 | Seal Washer PM-5 SUS+NBR | 3 | |
| 3 | 003-157-15 | Gland 37-CL2 SUS316 (DIN 1.4401) Stainless Steel | 1 | |
| 4 | 001-005-85 | Cabtyre Cable Set (10m) 2PNCT4Cx1,25mm2(Complete) CL2 | 1 | |
| 5 | 009-274-17 | Compression type Terminal TMNB-2.2(Insulated) CU | 2 | |
| 6 | 009-131-11 | Terminal 380V-50Hz R-5.5-6 CU | 1 | |
| 7 | 001-009-41 | Cabtyre Cable Set(10m)380/400/415V-50Hz(EUR,NSU) NSSHOU 4Gx2,5mm2 | 1 | Price on req. |
| 8 | 140-079-36 | Hex.Bolt M10x40 SUS316 (DIN 1.4401) Stainless Steel | 4 | |
| 9 | 141-006-22 | Hex.Nut M10 SUS316 (DIN 1.4401) Stainless Steel | 4 | |
| 10 | 003-112-18 | Gland No.2 SCS14 (DIN 1.4408 GX5CrNiMo19-11-2) Stainless Steel Casting | 2 | |
| 11 | 004-131-16 | Cable Bush d17xd49x20l CR | 1 | |
| 12 | 005-120-15 | Bush Washer d19.5xd49x3.2t SPC | 2 | |
| 13 | 140-056-24 | Hex.Bolt M8x30 SUS316 (DIN 1.4401) Stainless Steel | 8 | |
| 14 | 142-163-21 | Spring Washer M8 SUS316 (DIN 1.4401) Stainless Steel | 8 | |
| 15 | 006-101-26 | Stuffing Box 55/75-CL SCS14 (DIN 1.4408 GX5CrNiMo19-11-2) Stainless Steel Casting | 2 | |
| 16 | 122-126-20 | O-Ring G-75 FPDM | 2 | |
| 17 | 143-085-21 | Pan Screw (w/Spring Washer) M4x6 SWRM | 1 | |
| 18 | 009-275-18 | Compression type Terminal TGNB-5.5(Insulated) CU | 1 | |
| 19 | 001-009-36 | Cabtyre Cable Set(10m)380/400/415V-50Hz(EUR,NSU) NSSHOU 4Gx2,5mm2 (3G) | 1 | Price on req. |
| 20 | 004-130-15 | Cable Bush d15.5xd49x20l CR | 1 | |
| 21 | 009-275-18 | Compression type Terminal TGNB-5.5(Insulated) CU | 2 | |
| 22 | 072-107-30 | Eye Bolt M16 SUS316 (DIN 1.4401) Stainless Steel | 6 | |
| 0 | 142-001-11 | Washer M16(d16.2xd26x0.1t) SUS316 (DIN 1.4401) Stainless Steel | 1 | Price on req. |
| 0 | 142-001-12 | Washer M16(d16.2xd26x0.3t) SUS316 (DIN 1.4401) Stainless Steel | 1 | Price on req. |
| 23 | 140-098-28 | Hex.Bolt M12x35 SUS316 (DIN 1.4401) Stainless Steel | 4 | |
| 24 | 142-165-23 | Spring Washer M12 SUS316 (DIN 1.4401) Stainless Steel | 4 | |
| 25 | 050-000-06 | Motor Bracket SCS14 (DIN 1.4408 GX5CrNiMo19-11-2) Stainless Steel Casting | 1 | |
| 26 | 122-000-11 | O-Ring V-225 FPDM | 1 | |
| 27 | 142-198-12 | Wave Washer 6306 SK5 | 1 | Price on req. |
| 28 | 052-109-14 | Bearing 6306ZZC3 | 1 | |
| 29 | 058-000-09 | Lead Wire Protection Plate d80xd224x1.6t (SPHC) | 1 | |
| 30 | 055-003-84 | Rotor | 1 | |
| 31 | 147-080-15 | Impeller Key 7x7x18l SUS316 (DIN 1.4401) Stainless Steel | 1 | |
| 32 | 071-000-39 | Collar d225x97.5x1.6t SECC | 1 | |
| 33 | 056-007-83 | Stator 380/400/415V-50Hz | 1 | |
| 34 | 147-000-04 | Key7x2.5x40l S45C | 1 | Price on req. |
| 35 | 140-100-24 | Hex.Bolt M12x45 SUS316 (DIN 1.4401) Stainless Steel | 4 | |
| 36 | 142-165-23 | Spring Washer M12 SUS316 (DIN 1.4401) Stainless Steel | 4 | |
| 37 | 064-000-06 | Motor Frame SCS14 (DIN 1.4408 GX5CrNiMo19-11-2) Stainless Steel Casting | 1 | |

80SFQ211-53

Kontroll-Nr. --

2024-03-15 V.01.02.2023

| Pos.no | Item no. | Description | Qty. | UP / EUR |
|--------|------------|--|------|---------------|
| 38 | 122-000-11 | O-Ring V-225 FPDM | 1 | |
| 39 | 140-000-06 | Hex.Bolt (w/Spring Washer/Plain Washer) M6x12 SWCH | 3 | |
| 40 | 052-140-17 | Bearing 6309ZZD2C3 | 1 | |
| 41 | 140-100-24 | Hex.Bolt M12x45 SUS316 (DIN 1.4401) Stainless Steel | 4 | |
| 42 | 142-165-23 | Spring Washer M12 SUS316 (DIN 1.4401) Stainless Steel | 4 | |
| 43 | 060-000-09 | Bearing Housing SCS14 (DIN 1.4408 GX5CrNiMo19-11-2) Stainless Steel Casting | 1 | |
| 44 | 122-259-23 | O-Ring 12x3 FPDM | 1 | |
| 45 | 035-102-14 | Oil Plug M12x16(B=21) SUS316 (DIN 1.4401) Stainless Steel | 1 | |
| 46 | 025-191-19 | Mechanical Seal X-30W SiC | 1 | |
| 47 | 143-070-23 | Pan Screw M5x6 SWRM | 2 | |
| 48 | 030-142-11 | Oil Lifter H-30(A)(T) Resin | 1 | |
| 49 | 143-070-23 | Pan Screw M5x6 SWRM | 3 | |
| 50 | 030-151-13 | Seal Stopper H-30(A)(T) SPCC | 1 | |
| 51 | 122-406-14 | O-Ring 195x3.1 FPDM | 1 | |
| 52 | 046-000-04 | Air Release Valve PT-1/2 SUS316 (DIN 1.4401) Stainless Steel | 1 | |
| 53 | 035-109-11 | Oil Plug M8x12 SUS316 (DIN 1.4401) Stainless Steel | 1 | |
| 54 | 121-248-13 | Packing d8.2xd13.5x2t PE | 1 | |
| 55 | 020-000-96 | Pump Casing 80SFQ25.5/27.5/211 SCS14 (DIN 1.4408 GX5CrNiMo19-11-2) Stainless Steel Casting | 1 | |
| 56 | 026-000-26 | Oil Seal TC-35508 FPDM | 1 | |
| 57 | 071-344-12 | Shaft Sleeve 80SFQ25.5/7.5/11 SUS316 (DIN 1.4401) Stainless Steel | 1 | |
| 58 | 040-117-18 | Impeller Shim d25.2xd38x0.3t SUS316 (DIN 1.4401) Stainless Steel | 1 | |
| 59 | 021-374-16 | Impeller (50Hz) SCS14 (DIN 1.4408 GX5CrNiMo19-11-2) Stainless Steel Casting | 1 | |
| 60 | 142-130-32 | Plain Washer M16 SUS316 (EN X5CrNiMo17-12-2) Stainless Steel | 1 | |
| 61 | 142-166-24 | Spring Washer M16 SUS316 (DIN 1.4401) Stainless Steel | 1 | |
| 62 | 141-033-28 | Hex.Cap Nut M16 SUS316 (DIN 1.4401) Stainless Steel | 1 | |
| 63 | 120-121-16 | Packing d204xd264x0.3t PE | 1 | |
| 64 | 022-333-16 | Suction Cover 75/110-CL SCS14 (DIN 1.4408 GX5CrNiMo19-11-2) Stainless Steel Casting | 1 | |
| 65 | 142-165-23 | Spring Washer M12 SUS316 (DIN 1.4401) Stainless Steel | 3 | |
| 66 | 140-096-26 | Hex.Bolt M12x25 SUS316 (DIN 1.4401) Stainless Steel | 3 | |
| 67 | 023-123-27 | Pump Stand 55/110-CL SCS14 (DIN 1.4408 GX5CrNiMo19-11-2) Stainless Steel Casting | 1 | |
| 68 | 142-165-23 | Spring Washer M12 SUS316 (DIN 1.4401) Stainless Steel | 3 | |
| 69 | 140-099-29 | Hex.Bolt M12x40 SUS316 (DIN 1.4401) Stainless Steel | 3 | |
| 70 | 140-130-23 | Hex.Bolt M16x70 SUS316 (DIN 1.4401) Stainless Steel | 8 | |
| 71 | 048-000-03 | Screwed Flange PF-3(JIS10K) SCS14 (DIN 1.4408 GX5CrNiMo19-11-2) Stainless Steel Casting | 1 | |
| 72 | 121-000-18 | Packing JIS10Kx80mm Cork | 1 | |
| 73 | 037-000-08 | Discharge Bend 80x80mm(JIS10K) SCS14 (DIN 1.4408 GX5CrNiMo19-11-2) Stainless Steel Casting | 1 | |
| 74 | 142-166-24 | Spring Washer M16 SUS316 (DIN 1.4401) Stainless Steel | 8 | |
| 75 | 141-008-24 | Hex.Nut M16 SUS316 (DIN 1.4401) Stainless Steel | 8 | |
| 76 | 140-124-24 | Hex.Bolt M16x40 SUS316 (DIN 1.4401) Stainless Steel | 4 | |
| 77 | 121-154-11 | Packing 145mm2(P.C.145) Cork | 1 | |
| 0 | 093-154-11 | Guide Hook TOS-80-14 SCS14 (DIN 1.4408 GX5CrNiMo19-11-2) Stainless Steel Casting | 1 | |
| 0 | 140-100-24 | Hex.Bolt M12x45 SUS316 (DIN 1.4401) Stainless Steel | 2 | |
| 0 | 142-165-23 | Spring Washer M12 SUS316 (DIN 1.4401) Stainless Steel | 4 | |
| 0 | 091-000-14 | Duck Foot Bend TOS-80H SCS14 (DIN 1.4408 GX5CrNiMo19-11-2) Stainless Steel Casting | 1 | |
| 0 | 096-122-19 | Guide Connector 34mm SUS316 (DIN 1.4401) Stainless Steel | 2 | |
| 0 | 140-101-25 | Hex.Bolt M12x50 SUS316 (DIN 1.4401) Stainless Steel | 2 | |
| 0 | 094-132-16 | Guide Support TOS-80-14 SCS14 (DIN 1.4408 GX5CrNiMo19-11-2) Stainless Steel Casting | 1 | |
| 0 | 140-079-23 | Hex.Bolt M10x40 SUS316 (DIN 1.4401) Stainless Steel | 2 | |
| 0 | 141-006-22 | Hex.Nut M10 SUS316 (DIN 1.4401) Stainless Steel | 2 | |
| 0 | 142-128-37 | Plain Washer M10 SUS316 (EN X5CrNiMo17-12-2) Stainless Steel | 2 | |
| 0 | 095-000-04 | Chain 9mm(7L) EN X5CrNiMo17-2-2 | 1 | Price on req. |
| 0 | 011-000-03 | Shackle 9mm EN X5CrNiMo17-2-2 | 3 | |
| 0 | 095-000-05 | Chain 9mmx5M EN X5CrNiMo17-2-2 | 1 | Price on req. |
| 0 | 173-000-52 | Packing & O-Ring Set | 1 | |
| 0 | ##oilVG32 | ml Turbine Oil ISO VG32 | 2250 | Price on req. |