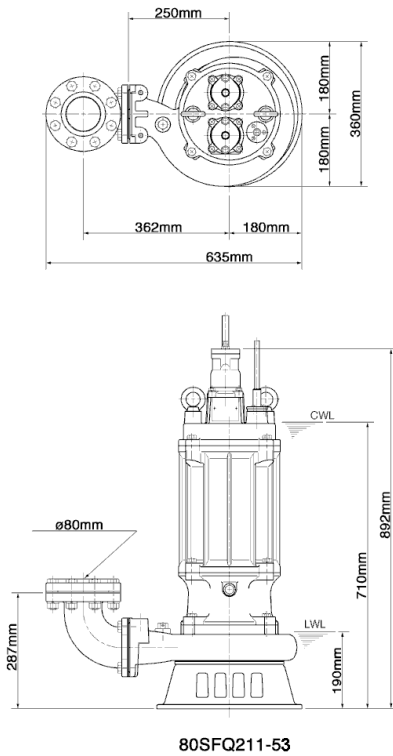
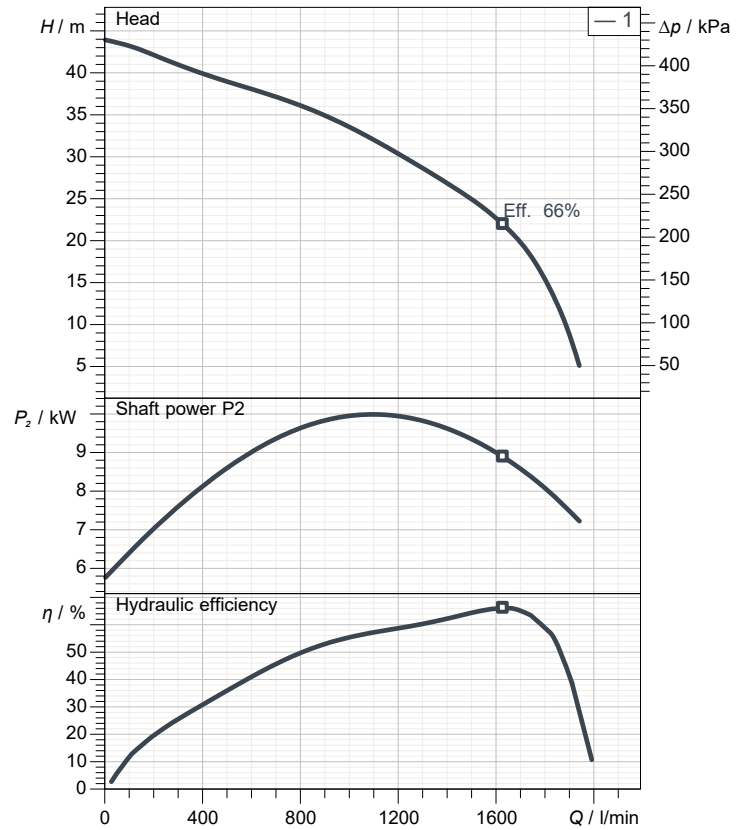


# Data sheet 80SFQ211-53



CWL: Continuous running water level  
LWL: Lowest running water level



## Specification

Electric submersible pump SFQ-series  
Degree of protection IP 68  
Pressure resistance max. 15 m  
Type of impeller Semi-open  
Max. solid handling 30 mm  
Suitable for:  
corrosive liquids

## Electric motor

Dry-type submersible induction motor  
Insulation class F 2 Poles 2935 1/min  
Starting mode Star-delta  
Rated voltage 400 V 50 Hz 3~  
Power uptake 12.60 kW  
Rated power 11.00 kW  
Rated current 21 A  
Start current 52.6 A

## Cable

10m NSSHÖU 4Cx2,5mm<sup>2</sup>/NSSHÖU 3Cx2,5mm<sup>2</sup>/2PNCT 2Cx1,25mm<sup>2</sup>

## Motor Protection

Miniature protector in windings  
(snap-action bi-metal device)

## Shaft seal

Double inside mechanical seal in oil bath  
additional lubrication by oil lifting device  
Primary seal  
Silicon carbide on silicon carbide  
Secondary seal  
Silicon carbide on silicon carbide

## Bearings

Shielded ball bearings, maintenance-free

## Materials

Impeller	SCS14 (SUS GX5CrNiMo19-11-2)
Pump casing	SCS14 (SUS GX5CrNiMo19-11-2)
Suction cover	SCS14 (SUS GX5CrNiMo19-11-2)
Motor Frame	SCS14 (SUS GX5CrNiMo19-11-2)
Shaft	SUS316 (EN-X5CrNiMo17-12-2)

## Discharge size

80mm JIS10K flange

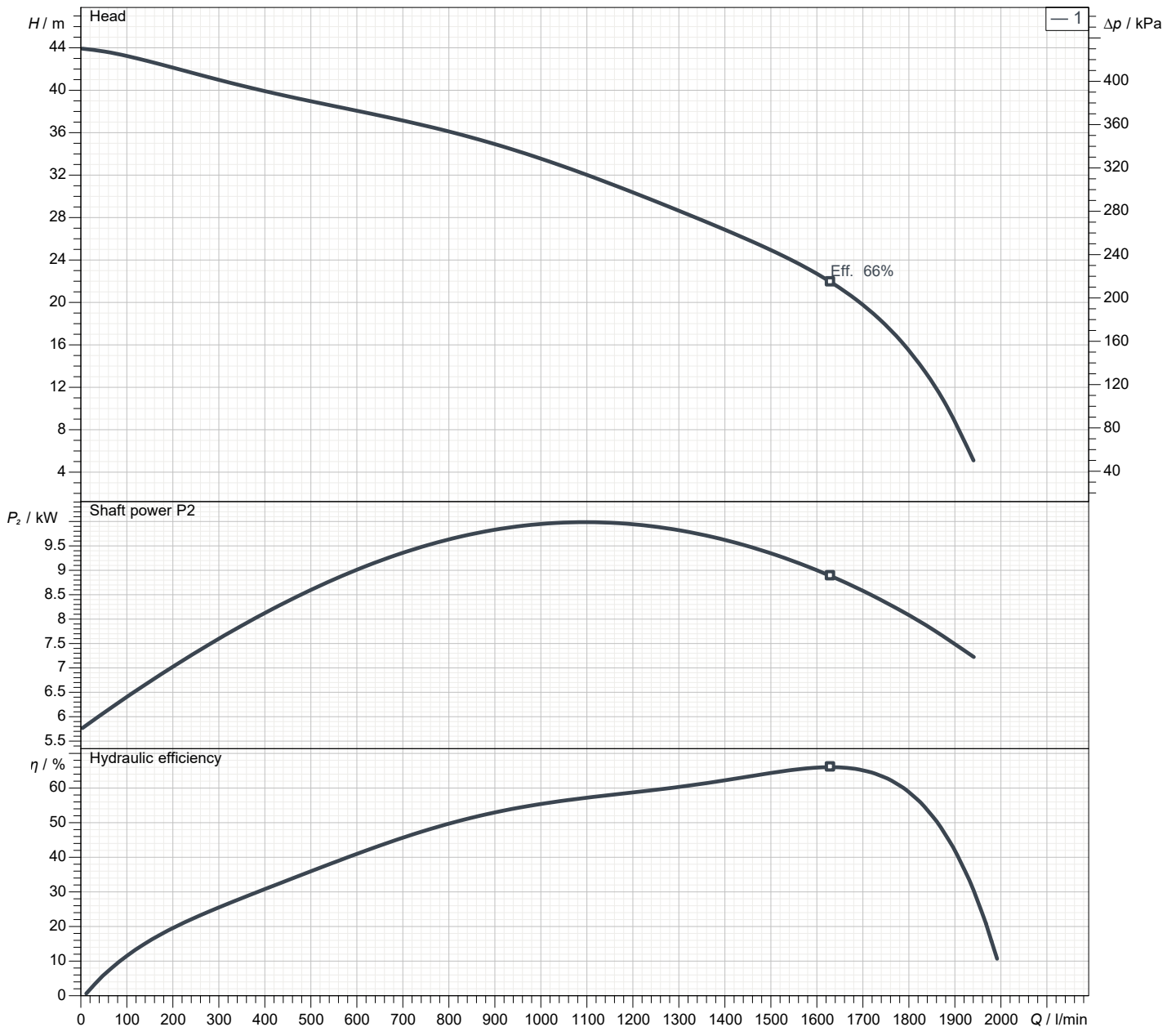
## Weight

143 kg (dry weight of the pump only without cable)

# Performance curve

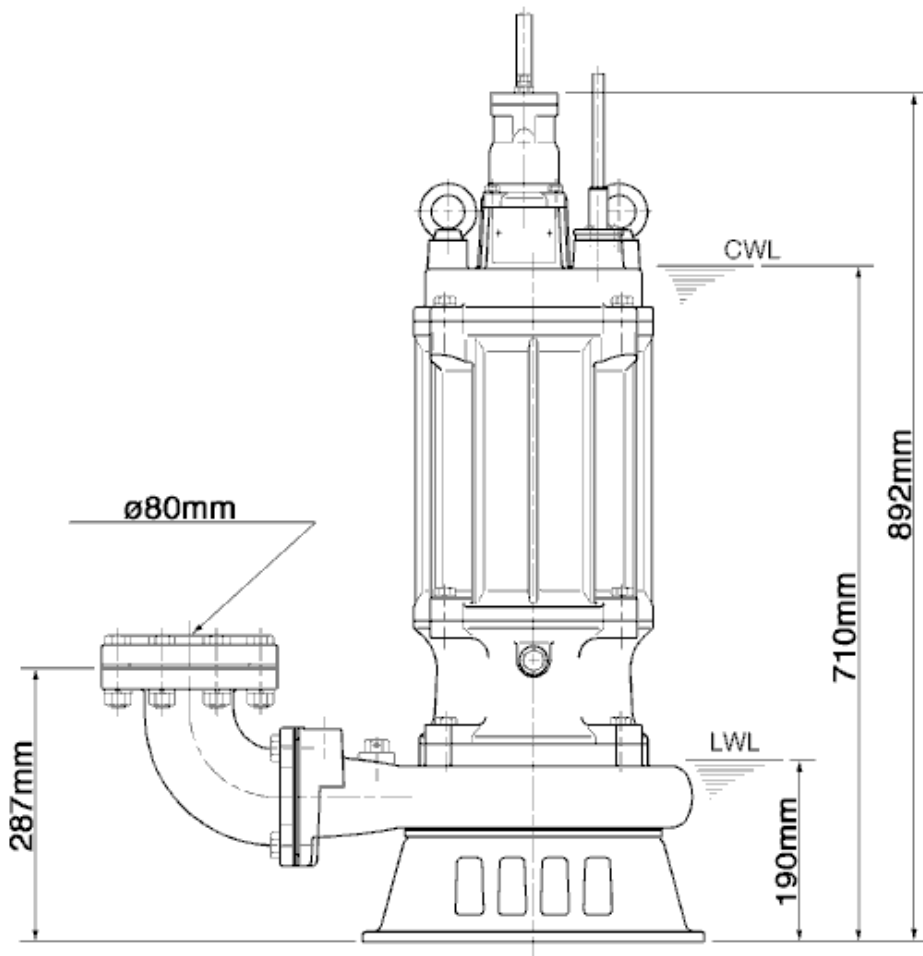
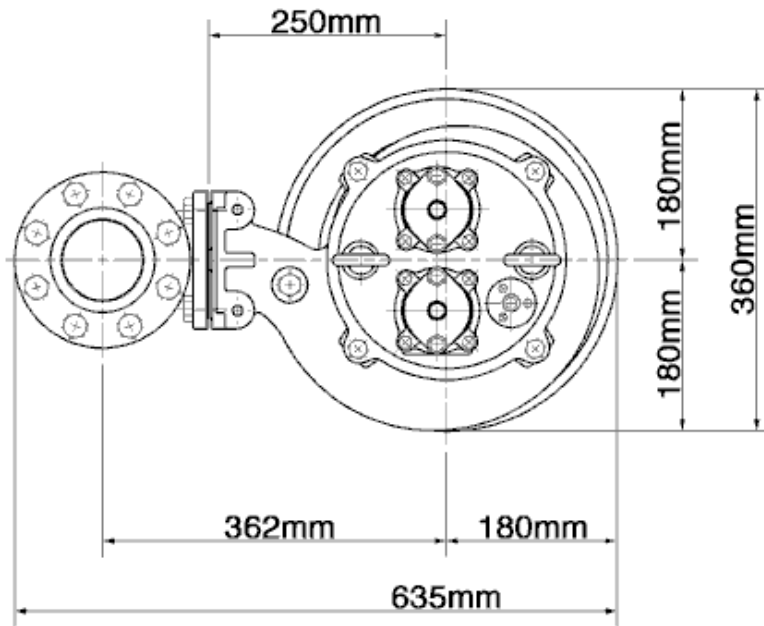
## 80SFQ211-53

Discharge port	3"
Head	43.9 m
Flow	1940.5 l/min
Rated power	11.00 kW
Power input	12.60 kW
Phases	3~
Voltages	400 V
Frequency	50 Hz
Rated current	21 A
Starting current	52.64 A
Number of poles	2
Speed	2935 1/min
Starting mode	Star-delta
Insulation class	F



# Dimensions

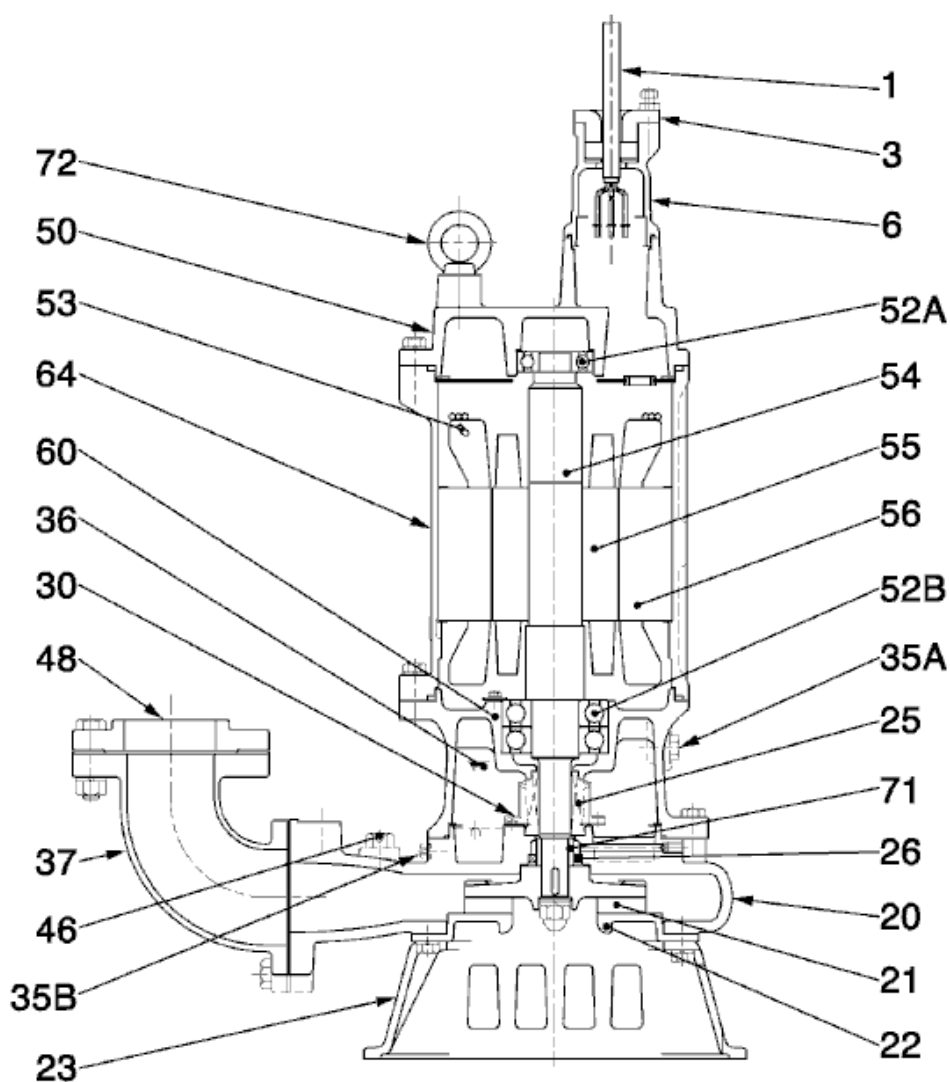
## 80SFQ211-53



**80SFQ211-53**

CWL: Continuous running water level  
LWL: Lowest running water level

# Sectional drawing 80SFQ211-53



**80SFQ211-53**

No.	Description	Remark	No.	Description	Remark
1	Cable (3x)	NSSHÖU-J	50	Motor cover	SCS14 (SUS GX5CrNiMo19-11-2)
3	Gland (2x)	SCS14 (SUS GX5CrNiMo19-11-2)	52A	Upper bearing	6306ZZC3
6	Stuffing box (2x)	SCS14 (SUS GX5CrNiMo19-11-2)	52B	Lower bearing	6309ZZD2C3
20	Pump casing	SCS14 (SUS GX5CrNiMo19-11-2)	53	Circle thermal protector (3x)	.
21	Impeller	SCS14 (SUS GX5CrNiMo19-11-2)	54	Shaft	SUS316 (EN-X5CrNiMo17-12-2)
22	Suction cover	SCS14 (SUS GX5CrNiMo19-11-2)	55	Rotor	.
23	Strainer	SCS14 (SUS GX5CrNiMo19-11-2)	56	Stator	.
25	Mechanical seal	X-30W	60	Bearing Housing	SCS14 (SUS GX5CrNiMo19-11-2)
26	Oil seal	TC35508	64	Motor Frame	SCS14 (SUS GX5CrNiMo19-11-2)
30	Oil distributor	Plastic	71	Shaft protection sleeve	SUS316 (EN-X5CrNiMo17-12-2)
35A	Oil screw	SUS316 (EN-X5CrNiMo17-12-2)	72	Eye screw (2x)	SUS316 (EN-X5CrNiMo17-12-2)
35B	Oil screw	SUS316 (EN-X5CrNiMo17-12-2)			
36	Lubricant	Turbine oil (ISO VG32)			
37	Discharge bend	SCS14 (SUS GX5CrNiMo19-11-2)			
46	Air vent valve	SUS316 (EN-X5CrNiMo17-12-2)			
48	Screwed Flange	SCS14 (SUS GX5CrNiMo19-11-2)			