

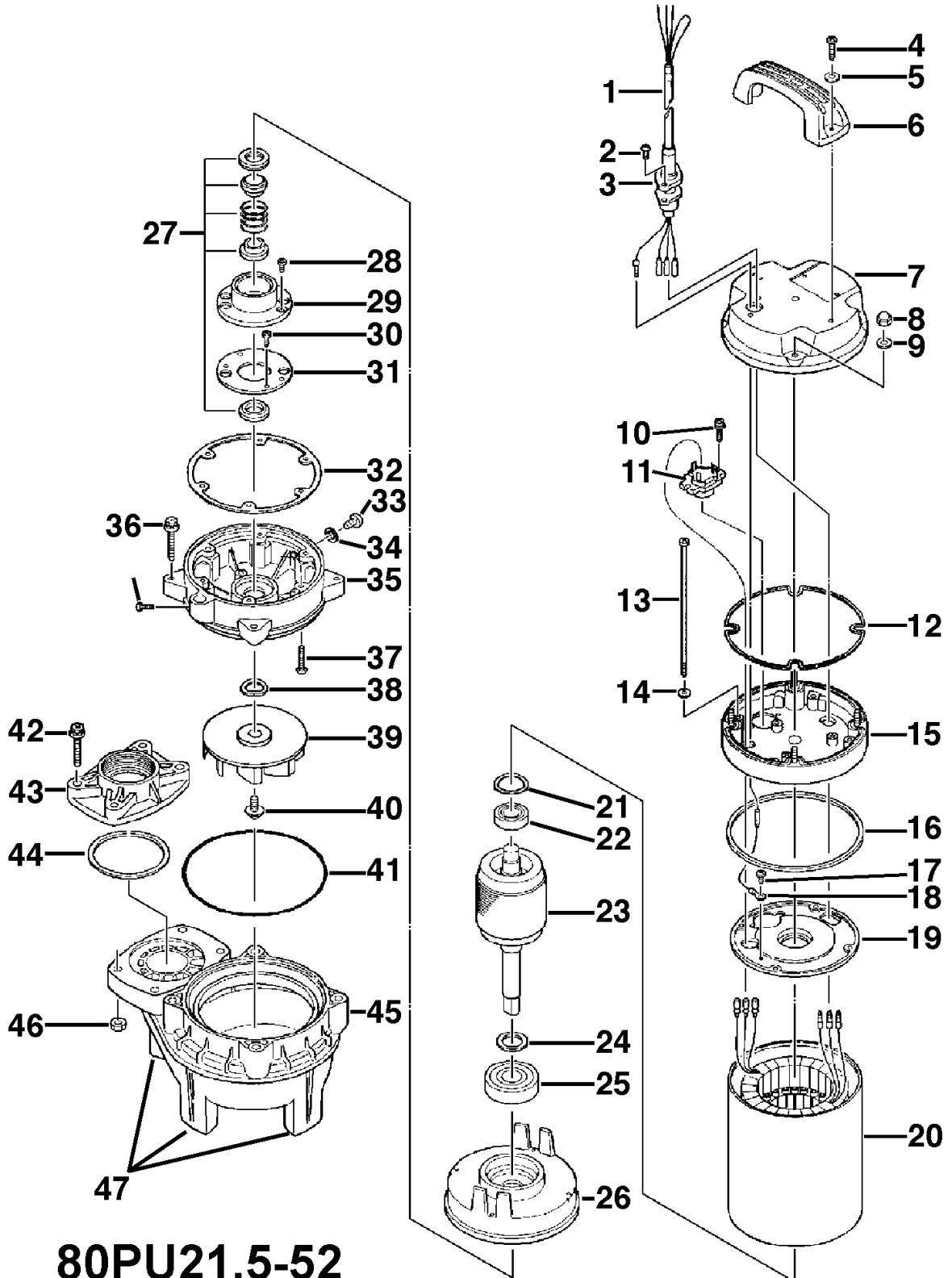
**80PU21.5-52**

Kontroll-Nr. --

2019-01-22 V.20 / 1.11.2017

Pos.no	Item no.	Description	Quant.	UP
		Packing O-Ring Set	1	Price on req.
1	001-TEG-31	Cabletyre Cable Set (20m) H07RN-F4Cx1,5mm <sup>2</sup> with gland	1	Price on req.
1	M01-TEG-31	Cabletyre Cable Set (20m) NSSHÖU 4Cx1,5mm <sup>2</sup>	1	Price on req.
2	143-146-18	Tapping Screw (w/Plain Washer) M5x20 SUS304 (EN X5CrNi18-10) Stainless Steel	2	Price on req.
3	003-190-10	Gland SUS316 (EN X5Cr-Ni-Mo17-12-2)	1	Price on req.
4	143-198-15	Pan Tapping Screw M6x30 SUS304 (EN X5CrNi18-10) Stainless Steel	2	Price on req.
5	142-126-19	Plain Washer M6 SUS304 (EN X5CrNi18-10) Stainless Steel	2	Price on req.
6	068-278-14	Handle 15-PUT Resin	1	Price on req.
7	051-262-13	Motor Head Cover Resin	1	Price on req.
8	141-029-18	Hex.Cap Nut M6 SUS304 (EN X5CrNi18-10) Stainless Steel	4	Price on req.
9	142-126-19	Plain Washer M6 SUS304 (EN X5CrNi18-10) Stainless Steel	4	Price on req.
10	143-138-17	Cross-Recessed Pan Tapping Screw M4x12 (SWCH)	2	Price on req.
11	053-	Motor Protector	1	Price on req.
12	121-569-13	Packing 15-PUT/PNT/PSHT NBR	1	Price on req.
13	143-199-16	Pan Screw M6x190 SWRM	4	Price on req.
14	142-113-26	Plain Washer M6(D=11.5) SPC	4	Price on req.
15	082-106-14	Head Cover Spacer Resin	1	Price on req.
16	121-570-17	Packing d152xd161x2.1t NBR	1	Price on req.
17	143-085-34	Pan Screw (w/Spring Washer) M4x6 C3604 (EN CuZn39Pb3)	1	Price on req.
18	009-187-12	Earth Terminal 1.25mm2x150L	1	Price on req.
19	050-464-14	Motor Bracket ADC	1	Price on req.
20	056-001-99	Stator	1	Price on req.
21	142-435-14	Wave Washer BBY060311A0 SUP	1	Price on req.
22	052-102-17	Bearing 6203ZZC3	1	Price on req.
23	055-830-10	Rotor w/Bearing	1	Price on req.
24	061-161-12	Bearing Collar d25.1xd36x1.6t SPC	1	Price on req.
25	052-108-13	Bearing 6305ZZC3	1	Price on req.
26	060-000-91	Bearing Housing (ADC)	1	Price on req.
27	025-001-04	Mechanical Seal H-20A SiC+CCBN	1	Price on req.
28	143-070-23	Pan Screw M5x6 SWRM	2	Price on req.
29	030-144-13	Oil Lifter H-20(A)(T) Resin	1	Price on req.
30	143-193-10	Pan Tapping Screw M5x12 SWRM	2	Price on req.
31	030-153-15	Seal Stopper For H-20(A) SPCC	1	Price on req.
32	121-567-11	Packing 15-PU/P(N)(A)(W)T/PSHT NBR	1	Price on req.
33	035-127-15	Oil Plug M10x15 SUS304 (EN X5CrNi18-10) Stainless Steel	1	Price on req.
34	121-246-11	Packing (Oil Plug) d10.3xd16x2t PE	1	Price on req.
35	029-380-19	Oil Casing 15-PUT Resin PPS2(GF+MD)50	1	Price on req.
36	140-000-09	Hex.Bolt (w/Spring Washer) M8x45 SUS304 (EN X5CrNi18-10) Stainless Steel	4	Price on req.
37	143-194-11	Truss Screw (w/Polyethylene Washer) M6x30 SUS304 (EN X5CrNi18-10) Stainless Steel	6	Price on req.
38	142-428-14	Conical Spring Washer d16.3xd31.5x1.2t SUS304 (EN X5CrNi18-10) Stainless Steel	1	Price on req.
39	021-008-10	Impeller (50Hz) 80PU21.5-52 Resin	1	Price on req.
40	143-195-12	Truss Screw (w/Plain Washer) M8x18 SUS304 (EN X5CrNi18-10) Stainless Steel	1	Price on req.
41	122-276-13	O-Ring 160xd3.1 NBR	1	Price on req.
42	140-000-09	Hex.Bolt (w/Spring Washer) M8x45 SUS304 (EN X5CrNi18-10) Stainless Steel	4	Price on req.
43	048-268-19	Screwed Flange 80mm(1.5KW) Resin	1	Price on req.
44	121-568-12	Packing 15-PU/P(N)(A)(W)T/PSHT NBR	1	Price on req.
45	020-002-21	Pump Casing 80PU21.5-52 Resin+GF	1	Price on req.
46	141-121-11	Hex.Nut M8(B=12) SUS304 (EN X5CrNi18-10) Stainless Steel	2	Price on req.
47	165-000-07	Rubber Feet (for Pump Casing) PU-series NBR	3	Price on req.
	173-563-18	Packing & O-Ring Set	1	Price on req.
	##oilVG32	ml Turbine Oil ISO VG32	500	Price on req.

# Exploded View 80PU21.5-52



**80PU21.5-52**