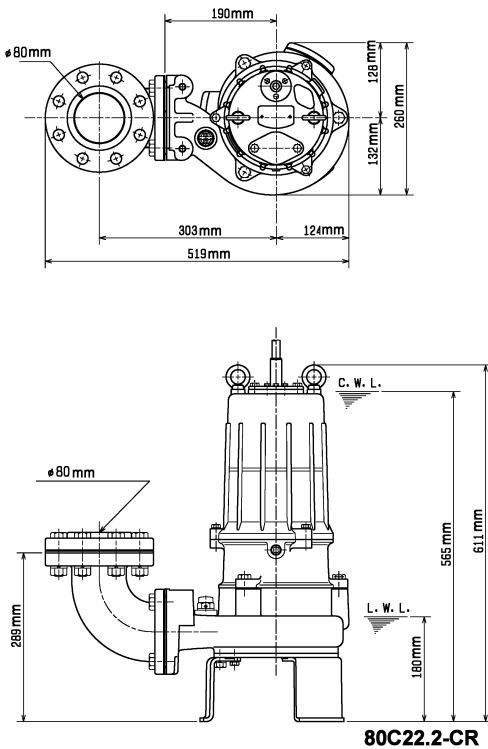
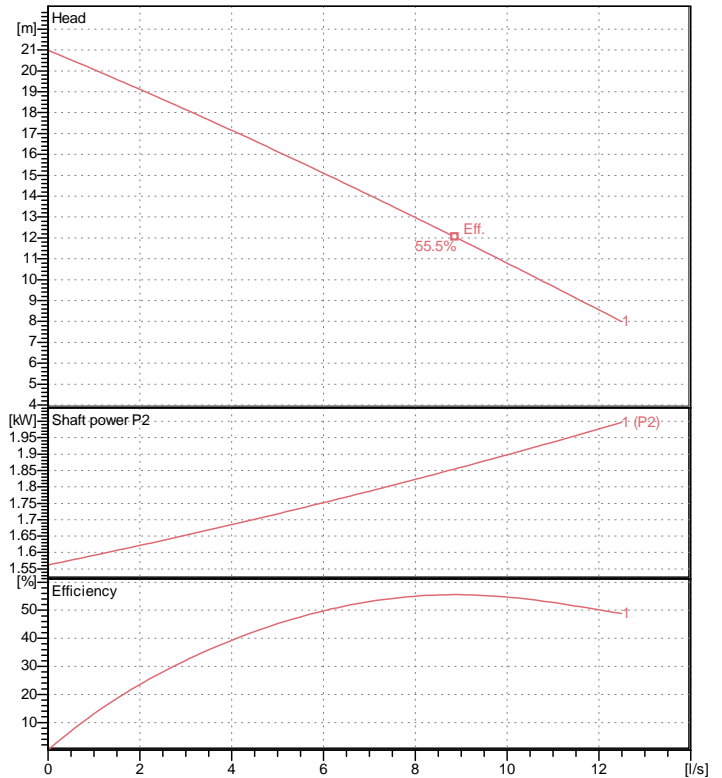


Data sheet 80C22.2-CR-51



80C22.2-CR

CWL: Continuous running water level
LWL: Lowest running water level



Specification

Electric submersible pump
Degree of protection IP 68
Depth of submersion max. 15 m
Type of impeller Dual channel impeller
Free passage 20 mm
Suitable for:
sewage water and liquids carrying solids

Electric motor

Dry-type submersible induction motor
Insulation class F 2Poles 2850 1/min
Starting mode Directly
Rated voltage 400 V 50 Hz 3~
Power uptake 3.10 kW
Rated power 2.20 kW
Rated current 5.2 A
Start current 58.2 A

Cable

10m H07RN-F 4Cx1,5mm²

Motor Protection

Circle thermal protector
(snap-action bi-metal device)

Shaft seal

Double inside mechanical seal in oil bath
additional lubrication by oil lifting device

Primary seal
Silicon carbide on silicon carbide
Secondary seal
Silicon carbide on silicon carbide

Bearings

Shielded ball bearings, maintenance-free

Materials

Impeller
Chromium Iron HiCrFC + Tungsten Carbide
Pump casing FC200 (EN-GJL-200)
Suction cover Chromium Iron HiCrFC
Motor Frame FC200 (EN-GJL-200)
Shaft SUS420J2 (EN-X30Cr13)

Discharge size

3" (80mm) special screwed-in mating flange
guide rail fitting optional

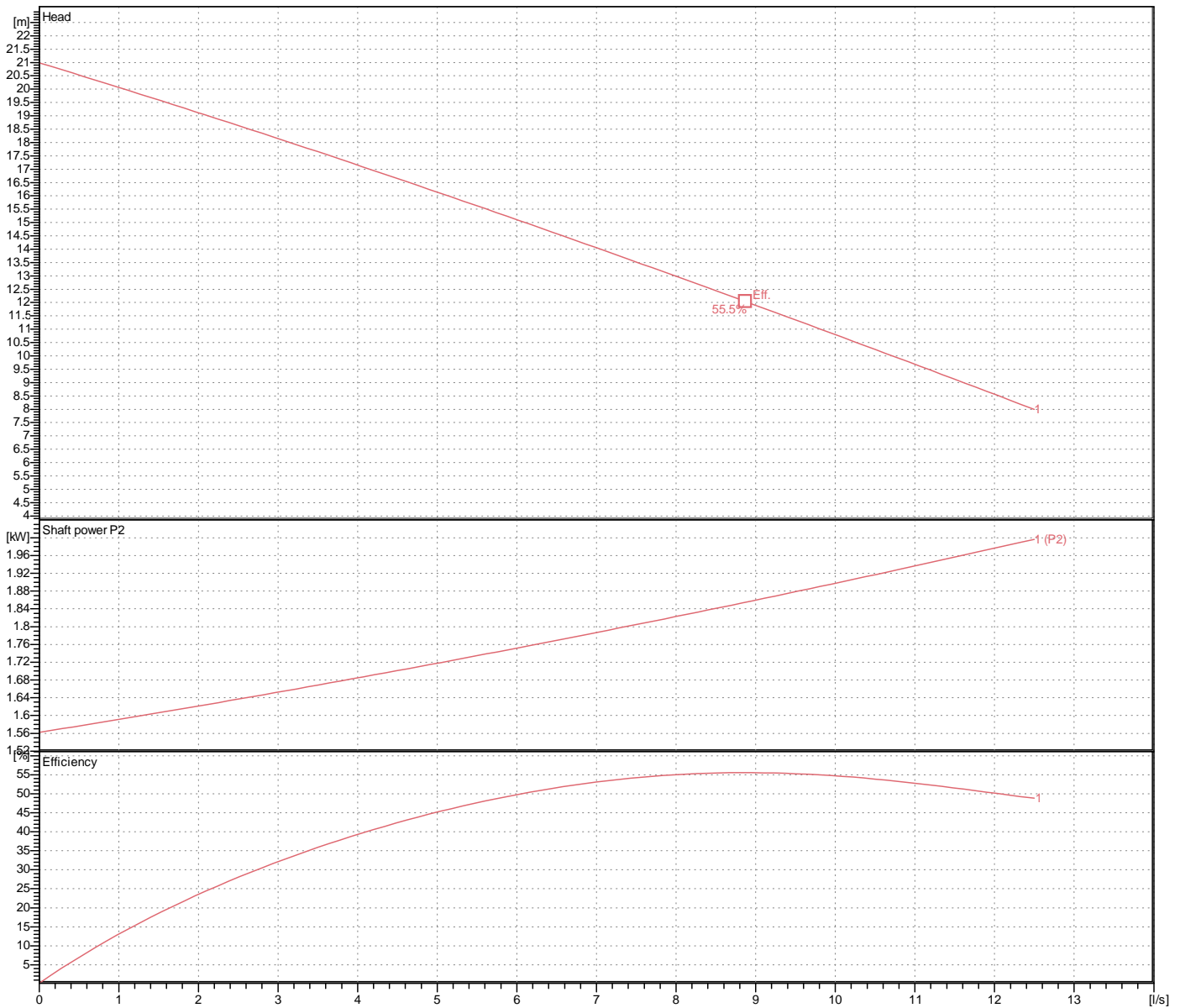
Weight

70 kg (dry weight of the pump only without cable)

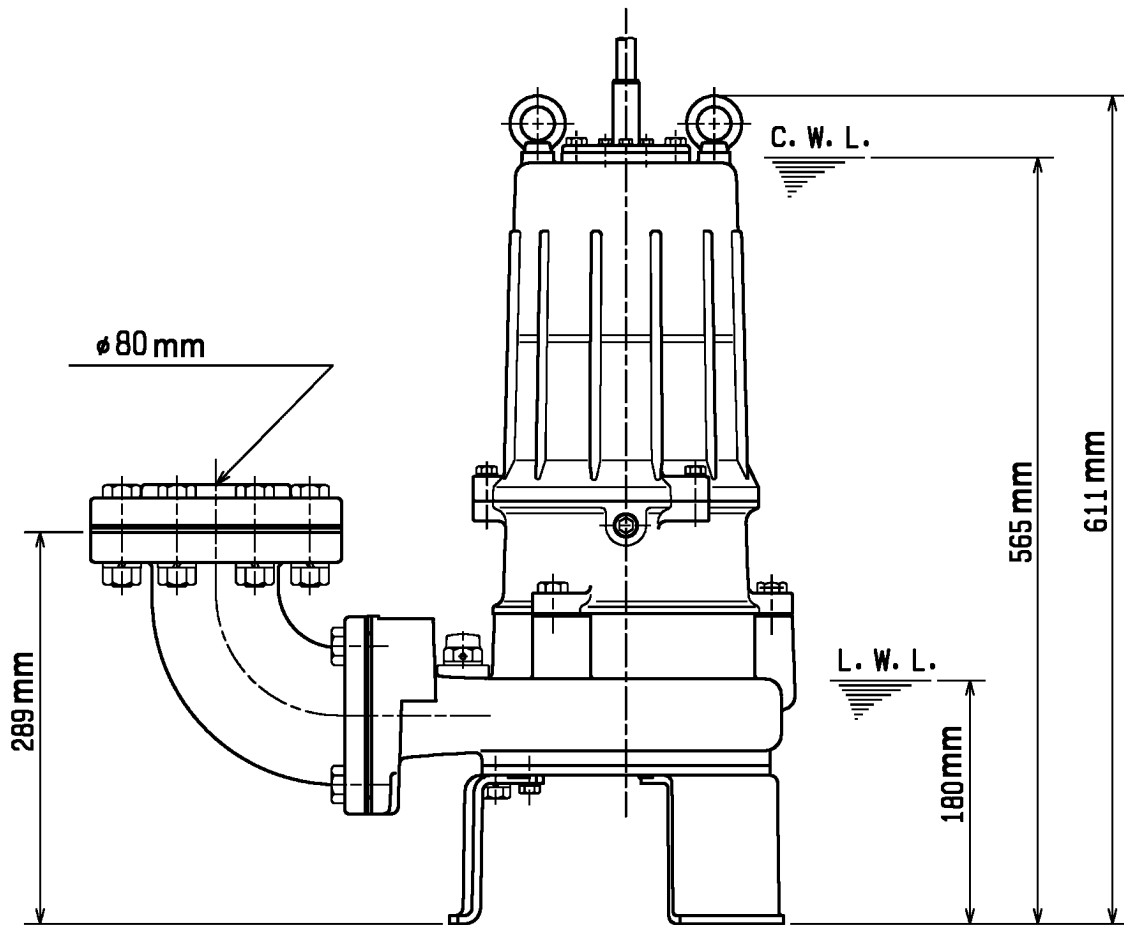
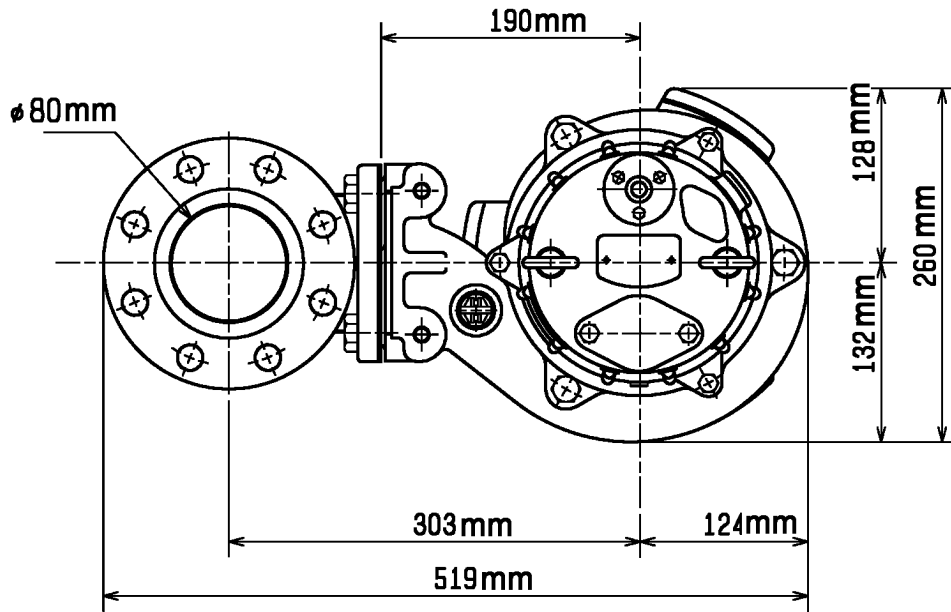
Performance curve

80C22.2-CR-51

| | |
|------------------|------------|
| Discharge port | 3" |
| Head | 21.0 m |
| Flow | 12.5 l/s |
| Rated power | 2.20 kW |
| Power input | 3.10 kW |
| Phases | 3~ |
| Voltages | 400 V |
| Frequency | 50 Hz |
| Rated current | 5.2 A |
| Starting current | 58.24 A |
| Number of poles | 2 |
| Speed | 2850 1/min |
| Starting mode | Directly |
| Insulation class | F |



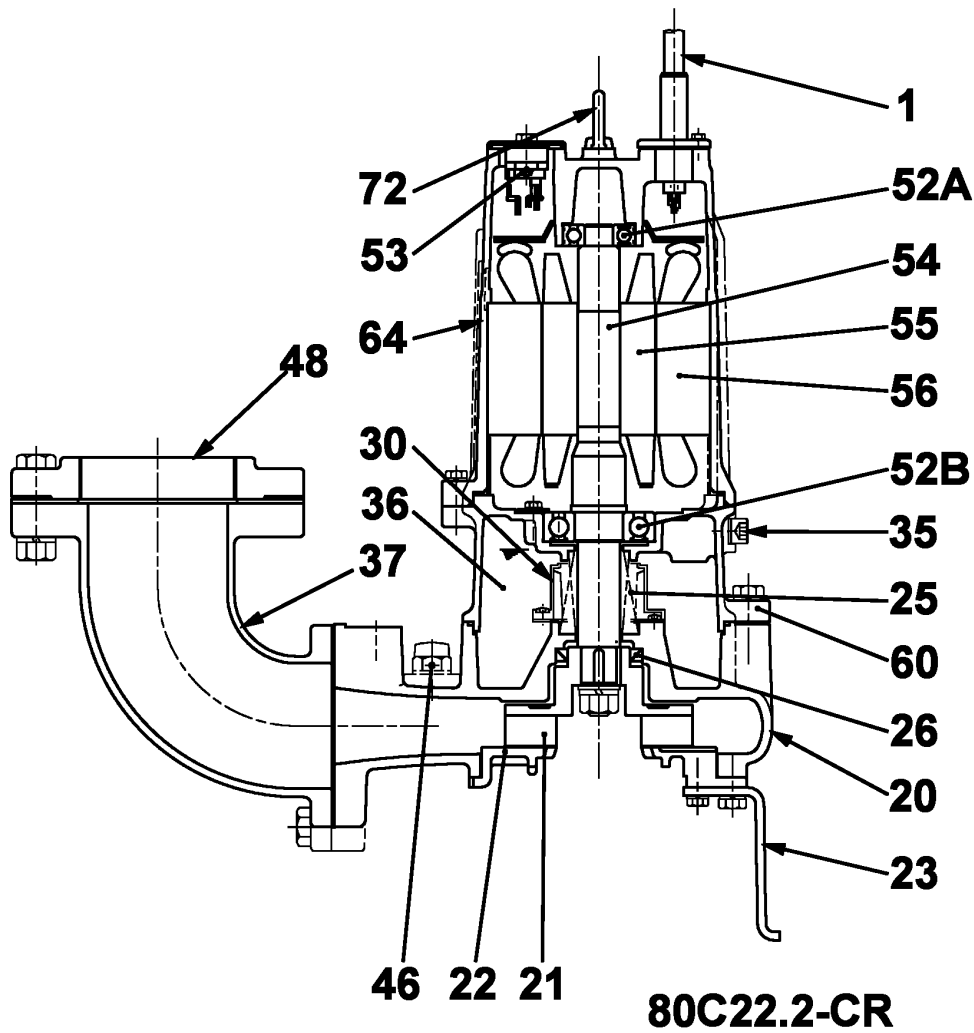
Dimensions 80C22.2-CR-51



80C22.2-CR

CWL: Continuous running water level
LWL: Lowest running water level

Sectional drawing 80C22.2-CR-51



| No. | Description | Remark | No. | Description | Remark |
|-----|--|---|-----|-----------------|-------------------------|
| 1 | Cable | H07RN-F | 54 | Shaft | SUS420J2 (EN-X30Cr13) |
| 20 | Pump casing | FC200 (EN-GJL-200) | 55 | Rotor | . |
| 21 | Impeller | Chromium Iron HiCrFC + Tungsten Carbide | 56 | Stator | . |
| 22 | Suction cover | Chromium Iron HiCrFC | 60 | Bearing Housing | FC200 (EN-GJL-200) |
| 23 | Stand support (3x) | Construction steel SS400 | 64 | Motor Frame | FC200 (EN-GJL-200) |
| 25 | Mechanical seal | H-30A | 72 | Eye screw | SUS304 (EN-X5CrNi18-10) |
| 26 | Oil seal | TC45629 | | | |
| 30 | Oil distributor | Plastic | | | |
| 35 | Oil screw | SUS304 (EN-X5CrNi18-10) | | | |
| 36 | Lubricant | Turbine oil (ISO VG32) | | | |
| 37 | Discharge bend | FC200 (EN-GJL-200) | | | |
| 46 | Air vent screw | Nylon | | | |
| 48 | Screwed Flange | FC200 (EN-GJL-200) | | | |
| 52A | Upper bearing | 6304ZZC3 | | | |
| 52B | Lower bearing | 6307ZZC3 | | | |
| 53 | Motor Protector 380/400/415V-50Hz KA314-HRXL00 (H.C) | | | | |